

PRIORITY TARGETS DEFINED AT LAMMERLAW GOLD PROJECT

Detailed desktop study validates Lammerlaw's prospectivity and outlines clear, low-cost pathways for staged exploration ahead of NZP&M permit transfer approval.

- Desktop study completed at the **Lammerlaw Gold Project – New Zealand**, ahead of anticipated permit transfer approval by New Zealand Petroleum and Minerals (NZP&M).
- Lammerlaw is situated within a regionally **developed structural corridor in Central Otago Goldfields, with documented historical gold production but limited modern exploration.**
- **Three priority targets have been defined** - Devils Creek (historic hard rock gold workings), Stony Creek (geophysics supported Au–W–Sb system), and the prospective TZ3–TZ4 Structural Boundary.
- **Extensive historical alluvial workings** reported gold grades of up to **2.72 g/t Au**, rock chip tungsten samples returning up to **710 ppm W**, and stream sediment anomalies up to **340 ppm W** collectively support the interpretation of an orogenic gold system developed within structurally controlled shear zones.
- Lammerlaw complements the NZ flagship Cap Burn Gold Project, adding portfolio depth and **exploration optionality through low- cost, staged ground-based evaluation of priority targets.**
- **Assay results from the recently completed Cap Burn RC drilling program are expected in early March**, subject to New Zealand laboratory turnaround time.

Critical Resources Limited ('Critical Resources' or the 'Company', **ASX:CRR**) is pleased to advise the completion of a detailed desktop study over the **Lammerlaw Gold Project** ('Lammerlaw') located in New Zealand's **Central Otago Goldfield**. The study was undertaken to refine geological understanding, assess regional prospectivity, and generate prioritised targets for future field programs, supporting the Company's staged work program **ahead of the anticipated approval for the transfer of the permit interest by NZP&M.**

The desktop review identifies three priority target areas at Lammerlaw, which is positioned within a regionally developed structural corridor with documented historical gold production but limited modern exploration. The Project lies on the southwestern flank of the Central Otago Antiform (**Figure 1**), which hosts **OceanaGold's >10 Moz Macraes gold camp**. Lammerlaw forms part of the Company's broader strategy to build a scalable gold portfolio in Otago—a region anchored by the Macraes operation and demonstrating **renewed exploration success, including Santana Minerals' Bendigo–Ophir** discovery.

LAMMERLAW PROJECT — DESKTOP STUDY

Lammerlaw covers approximately 410 km² and lies ~50 kilometres south-south-west from the Company's Cap Burn Gold Project, with both projects situated within the broader Central Otago gold province and along related regional structural corridors of the Otago Schist Belt. The regional setting of the Central Otago Schist Belt is highly supportive of orogenic gold systems; the northeastern flank of the broader antiform hosts

OceanaGold's >10 Moz Au Macraes Mine (**Figure 1**), a well-documented geological model for shear-controlled mineralisation in the Otago Schist Belt.

Host rocks within Lammerlaw comprise Textural Zone 3 and 4 schists (TZ3, TZ4), which are known to host low-angle, shear-zone-controlled deposits such as Macraes and Santana Minerals' (ASX:SML) Bendigo–Ophir project. Importantly, the geological review references published structural work identifying a potential 'mirror image' of the Hyde–Macraes Shear Zone in southern Otago coincident with the Lammerlaw permit area. The TZ3–TZ4 transition represents a rheological and metamorphic contrast within the Otago Schist Belt. Such contrasts are known to localise strain during regional deformation, promoting development of low angle shear zones and associated fluid pathways. This supports the potential for orogenic gold mineralisation within an analogous structural setting, noting that this interpretation remains conceptual pending field validation.

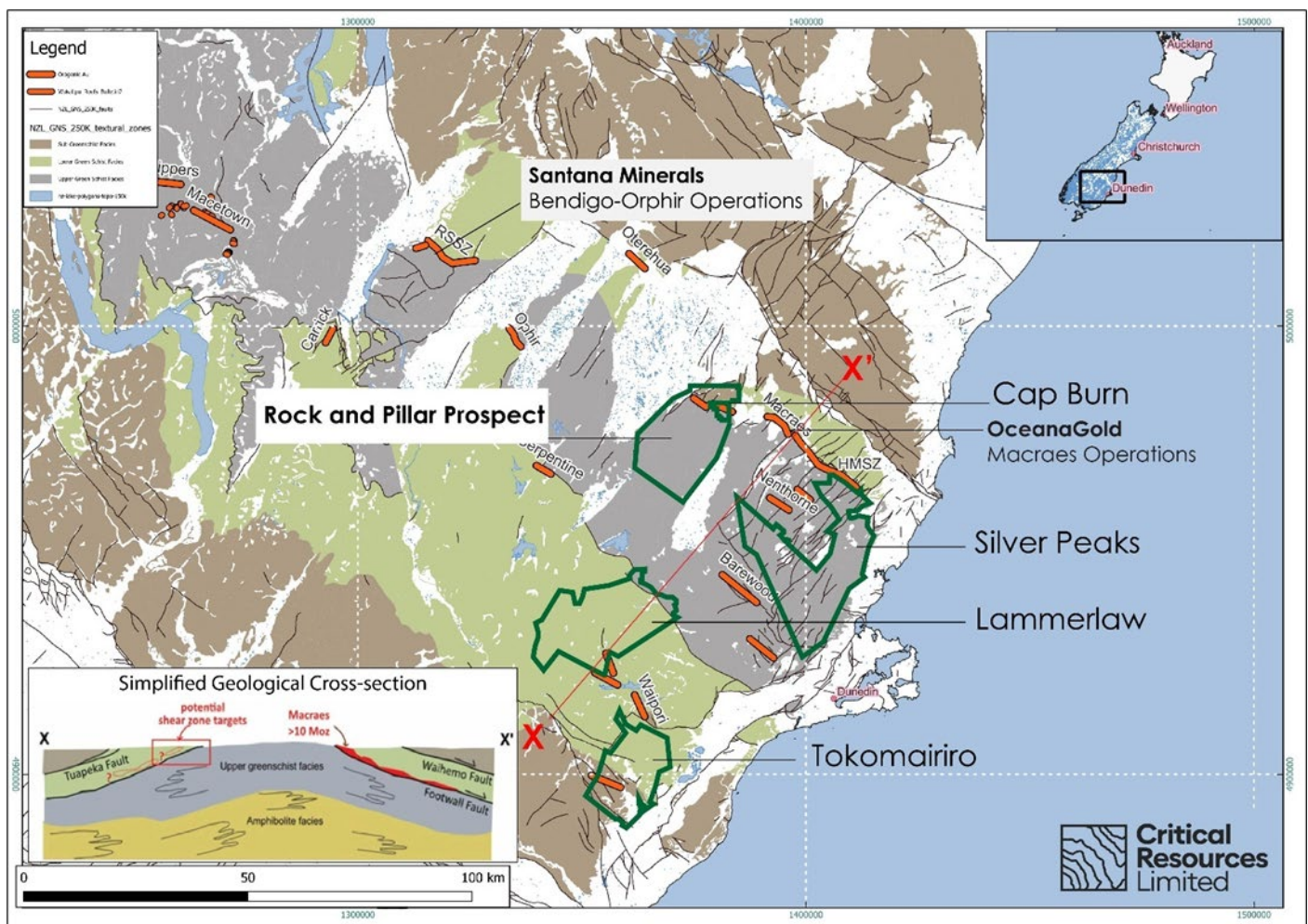


Figure 1 – Location of the Lammerlaw permit showing blocks of different metamorphic facies and the main historic orogenic gold deposits, including the currently active Macraes mine on the northeastern margin. The simplified schematic cross section (modified from Mackenzie et al., 2017) illustrates the structural symmetry of the Otago Schist Belt and the interpreted position of lower greenschist facies schists prospective for shear hosted orogenic gold mineralisation.

Extensive historic alluvial gold workings have been identified across the Lammerlaw permit area through the review of aerial imagery and LiDAR data. These workings highlight widespread gold dispersion across multiple drainage systems and are interpreted to indicate the presence of proximal bedrock gold sources within surrounding structural corridors. The distribution and density of these alluvial workings are consistent with a structurally controlled orogenic gold system developed within the permit area.

Historical records also identify several hard rock prospects and late 19th to early 20th century mine workings within the Lammerlaw permit area, each associated with lode or vein-style mineralisation. These include **Fiddlers Lode, Devils Creek, Bootlemans and Boatman's (Figure 2)**. The desktop review notes **Devils Creek as the most historically developed prospect**, with two small adits and numerous pits and trenches confirmed through aerial imagery and LiDAR interpretation.

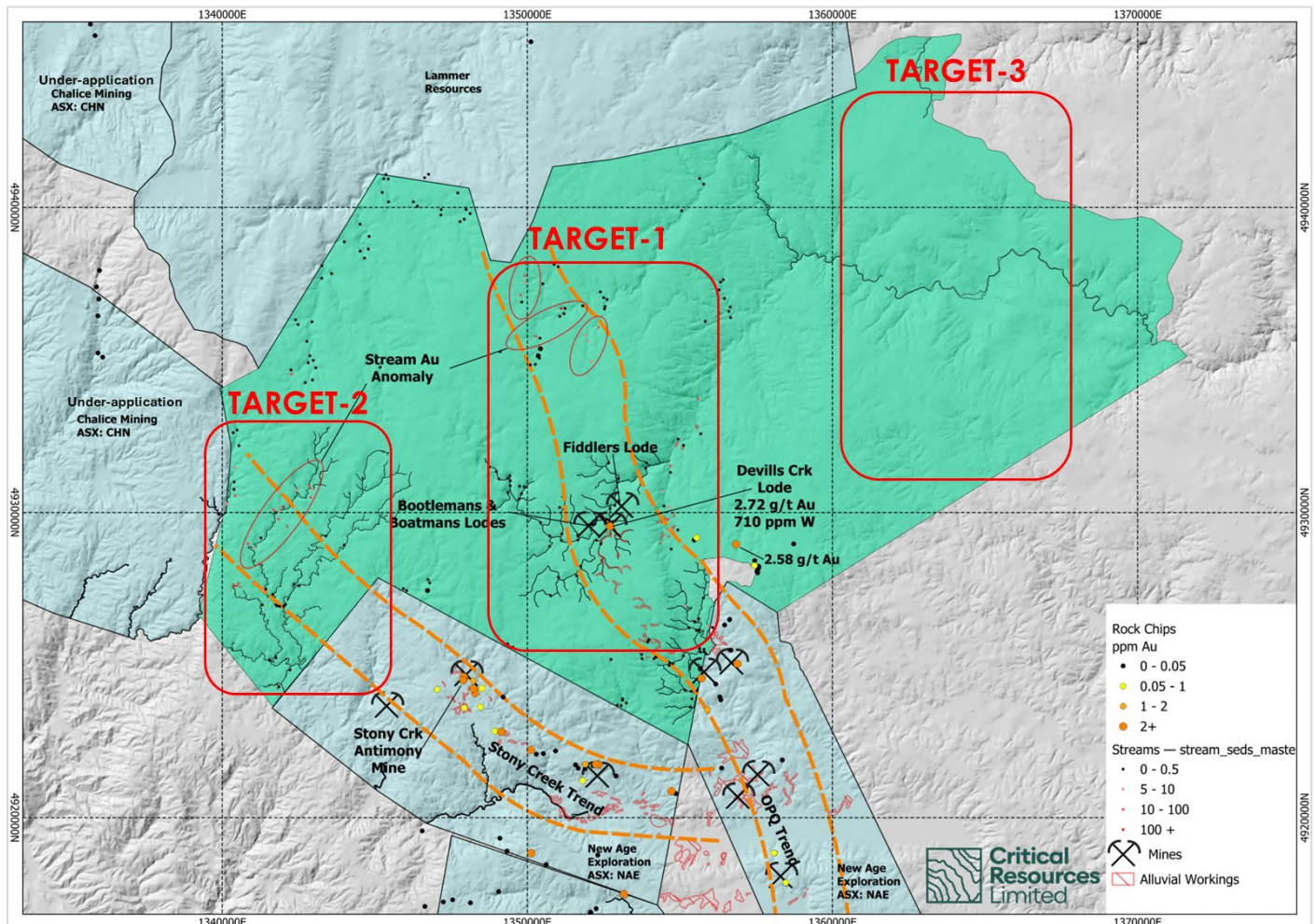


Figure 2 – Lammerlaw permit showing locations of prospect targets and historic mine workings.

Historic reports describe a stamping battery operating in the late 1890s at Bootlemans, with modern geochemical sampling highlighting **tungsten anomalies in stream catchments up to 340 ppm W**, suggesting multi commodity potential. Tungsten is commonly associated with orogenic gold systems and can highlight structurally fertile zones, supporting both gold potential and multi-commodity upside.

The desktop review also notes legacy rock chip samples grading **2.72 and 2.58 g/t Au** and stream sediment sampling with elevated **gold, arsenic and tungsten profiles**, supporting multiple target areas.

Outside the Lammerlaw permit, and highlighting the fertility of the region, sits the Otago Pioneer Quartz (**OPQ**) Mine, located along the OPQ structural trend and currently held by New Age Exploration Limited (ASX:NAE). OPQ is one of the earliest hard-rock gold operations established in the Otago region following its discovery in the 1860s. Historic records indicate the OPQ reef was mined over a strike length of more than 1,200 metres, with reported average historic grades of approximately 13–15 g/t Au, demonstrating the presence of historically high grade gold mineralisation along this structural corridor, which extends toward the Lammerlaw permit area.

Target Generation and Priority Areas

The desktop study has defined **three priority target areas** within the Lammerlaw permit that are considered highly prospective for structurally controlled gold (and associated tungsten) mineralisation. Target generation has been guided by the integration of **historic mining records, modern aerial imagery and LiDAR interpretation, regional geochemistry, and available airborne geophysical data**. The desktop study outlines three prospective structural themes relevant to the broader area:

- **OPQ Trend (Target 1):** Historic gold mining Fiddlers Lode, Devils Creek, Bootlemans and Boatman's with reported historic grades and high rock chip values in historic reports.
- **Stony Creek Trend (Target 2):** Associated with historic antimony workings, including reported test shipments grading **47% Sb** and references to very high grade ore potential in historic records.
- **TZ3–TZ4 Structural Boundary (Target 3):** Interpreted boundary between Textural Zone 3 and 4 schists traversing the permit area and representing a regionally significant structural corridor prospective for shear hosted orogenic gold mineralisation.

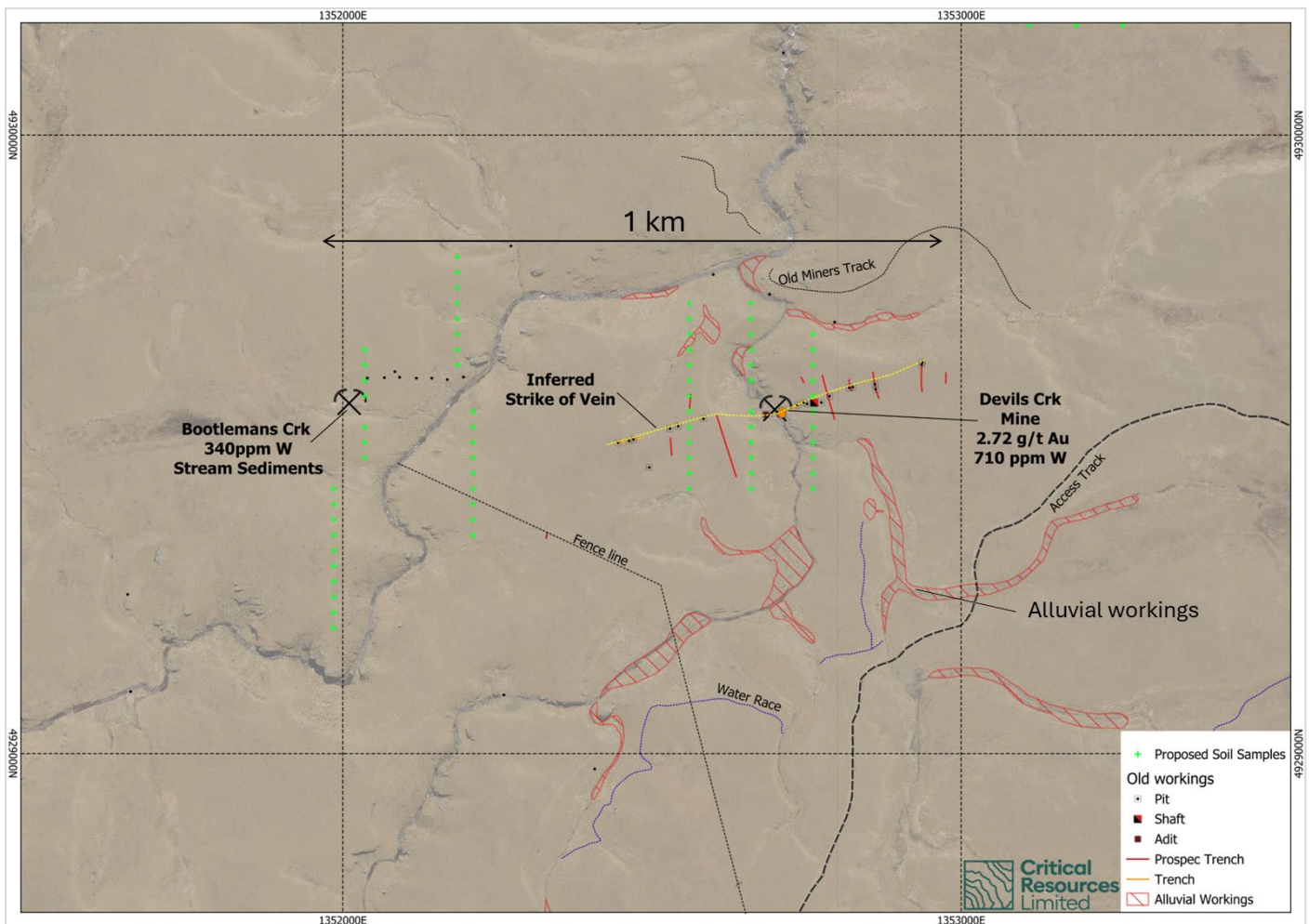


Figure 3 - Inferred strike of Devils Creek lode based on desktop review of historic workings identified in aerial imagery and LiDAR. As well as proposed soil geochemistry sample points (green crosses).

DEVILS CREEK TARGET – HISTORIC WORKING

The Devils Creek (**Figure 3**) area represents the most advanced historic hard rock gold prospect within the Lammerlaw permit and is a key focus of the desktop review. Historic records describe **two small adits developed along strike on either side of Devils Creek**, supported by numerous pits and prospect trenches. Interpretation of high resolution aerial imagery and LiDAR digital terrain data confirms the presence and continuity of these historic workings and allows the inferred strike of the mineralised lode to be mapped with greater confidence.

The **alignment of historic underground development, surface excavations, and mapped workings suggests mineralisation localised along a coherent shear or lode structure rather than isolated quartz vein occurrences**, consistent with lode style mineralisation developed within the Otago Schist Belt. The inferred strike extent derived from desktop interpretation provides a clear framework for follow up exploration, with proposed first pass surface sampling designed to test along strike continuity and assess potential extensions beyond the historically worked areas. Devils Creek is considered a priority target as it combines:

- Direct evidence of **historic hard rock gold exploitation**;
- A clearly identifiable **structural trend** mapped through modern datasets; and
- A location consistent with **shear controlled mineralisation** typical of Otago orogenic gold systems.

As such, Devils Creek represents a high priority exploration target with demonstrated structural continuity and direct evidence of historic hard rock gold mineralisation, providing a strong platform for systematic follow up work.

STONY CREEK – GEOPHYSICS TARGET

Target Two is defined along the **Stony Creek Trend**, which is characterised by a combination of **historic antimony workings, elevated tungsten geochemistry, and a distinct electromagnetic response** evident in regional airborne geophysical data (**Figure 4**).

Historic records from the Stony Creek area document **antimony production**, including reported test shipments of exceptionally high-grade material. While gold production from this trend was limited historically, the presence of antimony and tungsten is considered highly relevant, as both elements are **recognised pathfinders in orogenic gold systems**, commonly associated with deep-seated, structurally focused mineralising fluids.

The desktop review highlights a **coherent linear feature created by electromagnetic contrast** coincident with the Stony Creek Trend, interpreted to reflect lithological or structural variations potentially associated with mineralised shear zones. This geophysical signature, when considered alongside historic mining activity and anomalous tungsten values recorded in the broader catchment, elevates the Stony Creek Trend as a compelling exploration target with **multicommodity potential**. The Stony Creek target is prioritised due to:

- The coincidence of **historic antimony workings** with modern geophysical anomalies;
- The presence of tungsten anomalies consistent with structurally focused orogenic gold mineralisation; and
- Interpreted structural continuity over a kilometre-scale corridor.

Importantly, the Stony Creek Trend represents a target that was **not systematically evaluated using modern exploration techniques**, providing scope for new discoveries under shallow cover or along extensions of historically known mineralisation. Together, the Devils Creek and Stony Creek targets demonstrate two complementary expressions of mineralisation within the Lammerlaw permit. These targets form the foundation

for **staged follow-up programs**, beginning with surface validation and progressing toward more advanced work as warranted. The identification of multiple target styles within the permit reinforces Lammerlaw's role as a **portfolio-depth asset**, providing optionality and flexibility in the allocation of exploration capital alongside CRR's NZ flagship Cap Burn project.

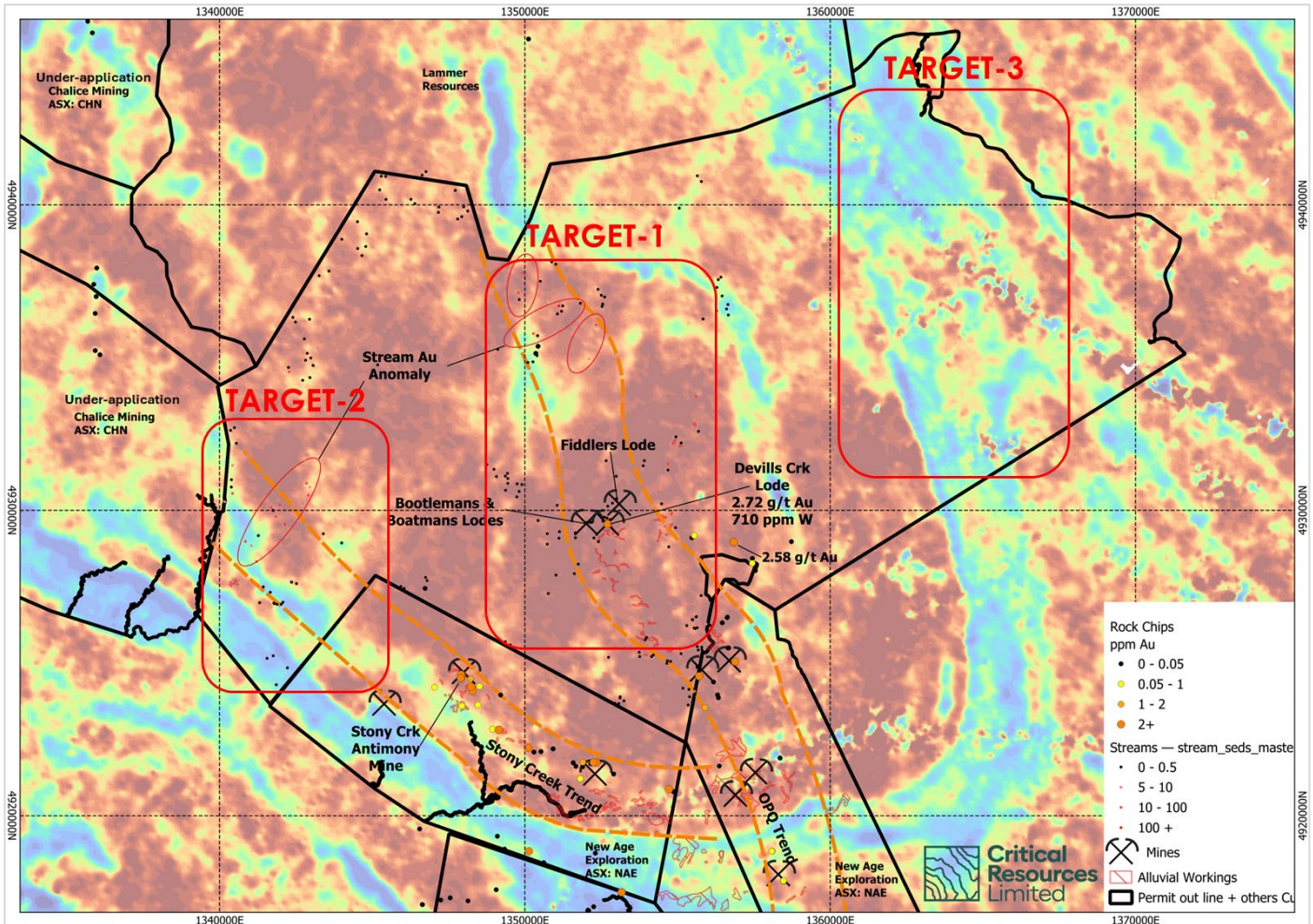


Figure 4 – Regional electromagnetic geophysics dataset covering the Lammerlaw permit with targets outlined.

Critical Resources Managing Director, Tim Wither, commented: ‘Lammerlaw was secured on the strength of its geological prospectivity, and the detailed desktop study has now validated that decision. The work confirms well-defined shear corridors and, importantly, multiple structurally coherent target areas consistent with orogenic gold systems in the Otago Schist Belt. These refined targets provide a clear foundation for systematic, low-cost field programs designed to test the structural interpretations and advance our understanding of the permit area. Lammerlaw complements Cap Burn and supports our strategy of building opportunities across a proven and highly prospective gold province in New Zealand.’

NEXT STEPS

Following completion of the desktop study, the Lammerlaw Gold Project has been progressed to a stage where **ground-based evaluation can be efficiently staged**, subject to the granting of the NZP&M permit transfer.

Near-term work will be focused on validating and refining the two priority target areas Devils Creek and Stony Creek, identified through the desktop review, with an emphasis on low-cost, high-information activities

designed to advance geological understanding prior to any more intensive exploration. Initial follow-up work is expected to include:

- **Ground reconnaissance and mapping** across the Devils Creek and Stony Creek areas to confirm interpreted structural trends, lithological boundaries, and the location and condition of historic workings identified through aerial imagery and LiDAR interpretation.
- **Targeted surface sampling** (including rock chip and soil / water sampling where appropriate) along the inferred strike of the Devils Creek lode and across structural corridors associated with the Stony Creek Trend, aimed at confirming gold and tungsten pathfinder geochemistry.
- **Ground-truthing of geophysical targets**, particularly the electromagnetic feature defined at Stony Creek, to assess its relationship to mapped structures, lithology and historic mineralisation.
- **Refinement of the geological model** through integration of new field data with the existing desktop interpretation to further prioritise target areas for subsequent exploration stages.

These activities are designed to follow a staged, capital-disciplined exploration approach, consistent with the strategy being applied across its Otago portfolio. Early-stage programs will be used to rapidly screen targets and focus expenditure on the most prospective structural zones, with progression to more advanced work contingent on results.

The Devils Creek and Stony Creek targets offer complementary exploration opportunities:

- **Devils Creek** provides a direct pathway to validating historic hard rock gold mineralisation along a mapped structural trend.
- **Stony Creek** offers potential for structurally controlled gold associated with tungsten and antimony pathfinder signatures, supported by geophysical data and limited modern exploration.

Lammerlaw's advancement through low-cost technical work and targeted field programs is intended to **complement the Company's NZ flagship Cap Burn Gold Project**, providing additional optionality and flexibility in exploration sequencing. Together, the prospecting permits support the Company's objective of building a scalable, multi-asset portfolio in New Zealand, with the ability to allocate capital effectively as geological understanding and results evolve.

To receive alerts for ASX announcements and updates sign up at www.criticalresources.com.au or for further information please contact us directly at:

E: info@criticalresources.com.au

P: +61 (8) 9465 1024

ABOUT CRITICAL RESOURCES LIMITED

Critical Resources Limited (ASX:CRR) is an Australian mining and technology company focused on the exploration and development of metals and advanced next-generation battery technologies essential for a sustainable future. The Company's portfolio includes the Mavis Lake Lithium Project in Ontario, Canada, the Halls Peak Base Metals Project in New South Wales, Australia, and a growing gold portfolio in New Zealand.



SCAN ME

Critical Resource Interactive Investor Hub

Engage with Critical Resources directly by asking questions, watching video summaries and seeing what other shareholders have to say about this, as well as past announcements.

For more information visit: www.criticalresources.com.au

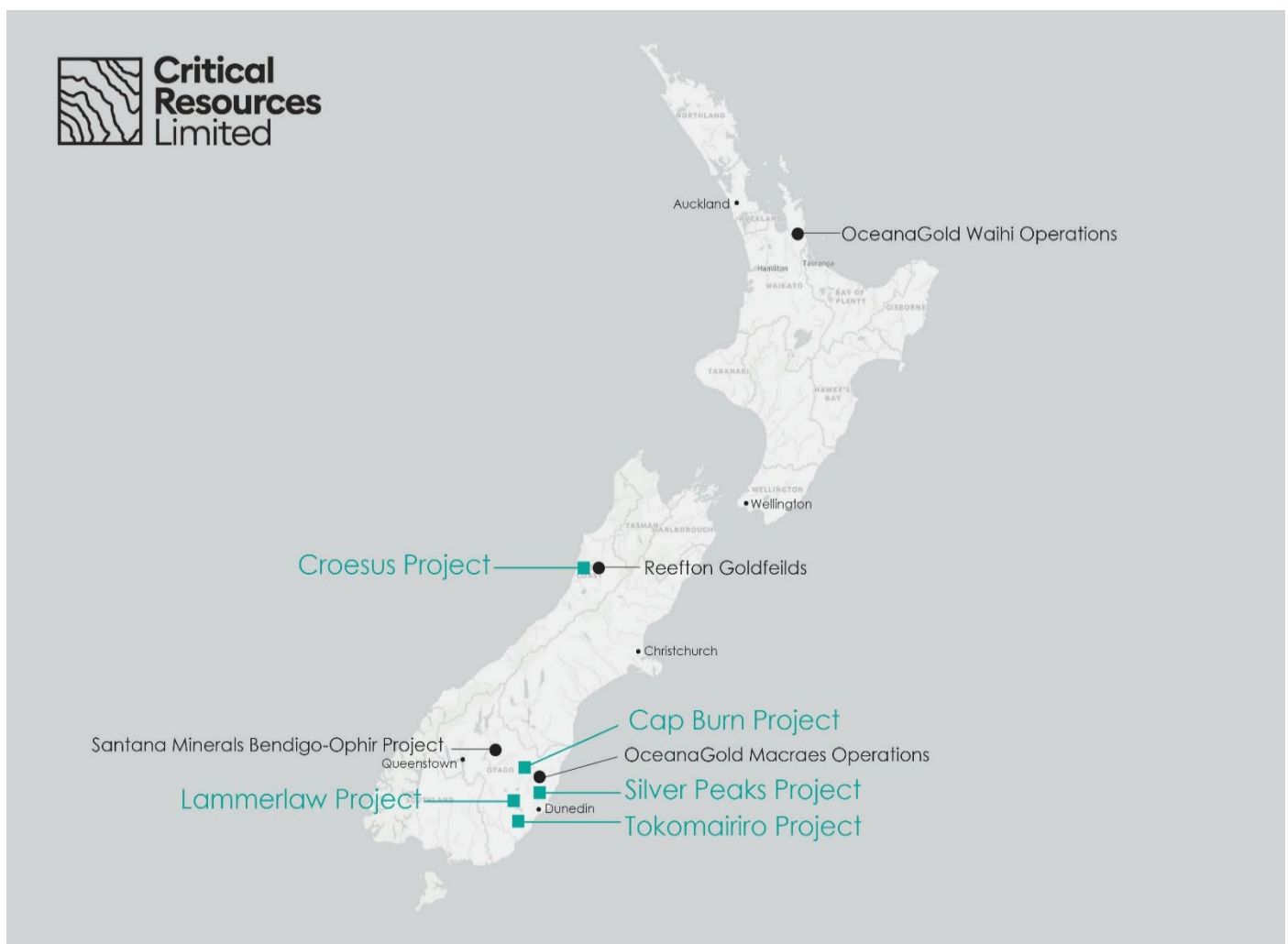


Figure 5 Location of Critical Resources' New Zealand gold projects with major gold mining projects.

COMPETENT PERSON STATEMENT

The information in this report that relates to Exploration Results is based on information compiled by Mr Hamish McLauchlan who is a member of The Australian Institute of Geoscientists (AIG). Mr McLauchlan is a consultant and has sufficient experience relevant to the style of mineralisation and type of deposit under consideration and to the activity which they are undertaking to qualify as Competent Person as defined in the 2012 Edition of the 'Australasian Code for Reporting of Exploration Results, Mineral Resources and Ore Reserves.' Mr McLauchlan consents to the inclusion in this report of the matters based on their information in the form and context in which it appears. The Company confirms that the form and context in which the Competent Person's findings are presented have not been materially modified.

This announcement contains information on the Lammerlaw Project extracted from ASX market announcement dated 6 August 2025 reported in accordance with the 2012 JORC Code and available for viewing at www.criticalresources.com.au. The Company confirms that it is not aware of any new information or data that materially affects the information included in any original ASX market announcement.

FORWARD LOOKING STATEMENTS

This announcement may contain certain forward-looking statements and projections. Statements regarding CRR's plans with respect to its mineral properties and programs are forward-looking statement. Such forward-looking statements/projections are estimates for discussion purposes only and should not be relied upon. Forward-looking statements/projections are inherently uncertain and may therefore differ materially from results ultimately achieved. There can be no assurance that CRR's plans for development of its mineral properties will proceed as currently expected. There can also be no assurance that CRR will be able to confirm the presence of additional mineral resources, that any mineralisation will prove to be economic or that a mine will successfully be developed on any of CRR's mineral properties. Critical Resources Limited does not make any representations and provides no warranties concerning the accuracy of the projections and disclaims any obligation to update or revise any forward-looking statements/projections based on new information, future events or otherwise, except to the extent required by applicable laws. While the information contained in this report has been prepared in good faith, neither Critical Resources Limited or any of its directors, officers, agents, employees or advisors give any representation or warranty, express or implied, as to the fairness, accuracy, completeness or correctness of the information, opinions and conclusions contained in this announcement.

Lammerlaw

JORC Code, 2012 Edition – Table 1

Section 1 Sampling Techniques and Data

(Criteria in this section apply to all succeeding sections.)

Criteria	JORC Code explanation	Commentary
Sampling techniques	<i>Nature and quality of sampling (e.g., cut channels, random chips, or specific specialised industry standard measurement tools appropriate to the minerals under investigation, such as down hole gamma sondes, or handheld XRF instruments, etc.). These examples should not be taken as limiting the broad meaning of sampling. Include reference to measures taken to ensure sample representivity and the appropriate calibration of any measurement tools or systems used. Aspects of the determination of mineralisation that are Material to the Public Report.</i>	<ul style="list-style-type: none"> No sampling has been conducted by the Company. Legacy sampling is covered in Section 2 (below). The Prospecting permit application is currently being processed by New Zealand Petroleum and Minerals and no prospecting activities have commenced. This report provides a summary of the work completed by other parties on the permit to date.
Drilling techniques	<i>Drill type (eg core, reverse circulation, open hole hammer, rotary air blast, auger, Bangka, sonic, etc.) and details (eg core diameter, triple or standard tube, depth of diamond tails, face sampling bit or other type, whether core is oriented and if so, by what method, etc.).</i>	<ul style="list-style-type: none"> No drilling has been conducted to date. The application phase does not permit ground disturbing activities.

Criteria	JORC Code explanation	Commentary
Drill sample recovery	<p>Method of recording and assessing core and chip sample recoveries and results is assessed.</p> <p>Measures taken to maximise sample recovery and ensure representative nature of the samples.</p> <p>Whether a relationship exists between sample recovery and grade and whether sample bias may have occurred due to preferential loss/gain of fine/coarse material.</p>	<ul style="list-style-type: none"> Not applicable no drilling completed.
Logging	<p>Whether core and chip samples have been geologically and geotechnically logged to a level of detail to support appropriate Mineral Resource estimation, mining studies and metallurgical studies.</p> <p>Whether logging is qualitative or quantitative in nature. Core (or costean, channel, etc.) photography.</p> <p>The total length and percentage of the relevant intersections logged.</p>	<ul style="list-style-type: none"> Not applicable no drilling completed.
Sub sampling techniques and sample preparation	<p>If core, whether cut or sawn and whether quarter, half or all core taken.</p> <p>If non core, whether riffled, tube sampled, rotary split, etc. and whether sampled wet or dry.</p> <p>For all sample types, the nature, quality and appropriateness of the sample preparation technique.</p> <p>Quality control procedures adopted for all sub sampling stages to maximise representivity of samples.</p> <p>Measures taken to ensure that the sampling is representative of the in situ material collected, including for instance results for field duplicate/second half sampling.</p> <p>Whether sample sizes are appropriate to the grain size of the material being sampled.</p>	<ul style="list-style-type: none"> Not applicable no drilling completed.
Quality of assay data and laboratory tests	<p>The nature, quality and appropriateness of the assaying and laboratory procedures used and whether the technique is considered partial or total.</p> <p>For geophysical tools, spectrometers, handheld XRF instruments, etc., the parameters used in determining the analysis include instrument make and model, reading times, calibration factors applied and their derivation, etc.</p> <p>Nature of quality control procedures adopted (eg standards, blanks, duplicates, external laboratory checks) and whether acceptable levels of accuracy (i.e. lack of bias) and precision have been established.</p>	<ul style="list-style-type: none"> Not applicable no sampling completed by the Company.

Criteria	JORC Code explanation	Commentary
Verification of sampling and assaying	The verification of significant intersections by either independent or alternative company personnel. The use of twinned holes. Documentation of primary data, data entry procedures, data verification, and data storage (physical and electronic) protocols. Discuss any adjustments to assay data.	<ul style="list-style-type: none"> Not applicable no sampling completed by the Company.
Location of data points	Accuracy and quality of surveys used to locate drill holes (collar and down hole surveys), trenches, mine workings and other locations used in Mineral Resource estimation. Specification of the grid system used. Quality and adequacy of topographic control.	<ul style="list-style-type: none"> Not applicable no sampling completed by the Company.
Data spacing and distribution	Data spacing for reporting of Exploration Results. Whether the data spacing and distribution is sufficient to establish the degree of geological and grade continuity appropriate for the Mineral Resource and Ore Reserve estimation procedure(s) and classifications applied. Whether sample compositing has been applied.	<ul style="list-style-type: none"> Not applicable no sampling or drilling completed by the Company.
Orientation of data in relation to geological structure	Whether the orientation of sampling achieves unbiased sampling of possible structures and the extent to which this is known, considering the deposit type. If the relationship between the drilling orientation and the orientation of key mineralised structures is considered to have introduced a sampling bias, this should be assessed and reported if material.	<ul style="list-style-type: none"> Not applicable no sampling or drilling completed by the Company.
Sample security	The measures taken to ensure sample security.	<ul style="list-style-type: none"> Not applicable no sampling completed by the Company.
Audits or reviews	The results of any audits or reviews of sampling techniques and data.	<ul style="list-style-type: none"> No audits or reviews have been conducted as no exploration activity has completed by the Company

Lammerlaw

Section 2 Reporting of Exploration Results

(Criteria listed in the preceding section also apply to this section.)

Criteria	JORC Code explanation	Commentary
Mineral tenement and land tenure status	Type, reference name/number, location and ownership, including agreements or material issues with third parties such as joint ventures, partnerships, overriding royalties, native title interests, historical sites, wilderness or national park and environmental settings. The security of the tenure held at the time of reporting, along with any known impediments to obtaining a licence to operate in the area.	<ul style="list-style-type: none"> PP61276 is a prospecting permit located within the Otago Schist Belt. The permit is currently held by Koura Resources Ltd. Critical Resources 100% owned subsidiary, Goldfire Resources have entered into a binding sale and purchase agreement for the 90% purchase of the permit, subject to approval of transfer by New Zealand Petroleum and Minerals (NZP&M). At the time of reporting, the Company's 90% interest in the permit transfer remains under assessment by NZP&M. There are no known legal impediments to the granting of the permit transfer, subject to standard regulatory approvals. The permit area includes both conservation and private land parcels. Land access approvals have been sought in accordance with NZPAM and DoC requirements.

Criteria	JORC Code explanation	Commentary
Exploration done by other parties	Acknowledgment and appraisal of exploration by other parties.	<ul style="list-style-type: none"> • Exploration within the Lammerlaw permit area has historically been limited and largely reconnaissance in nature. Most modern exploration programs were broad-spaced regional surveys rather than systematic, prospect-scale investigations. • Lime and Marble Ltd (1972; MR2102): Conducted early geochemical sampling, including a soil survey around Waipori, and reviewed historic data. • BHP (1988; EL33305/MR2126): Sampled 229 stream sediments and 29 rock chips near the eastern boundary of the permit. Results showed anomalous Au in stream sediments and elevated Au Sb W in mine dump rock chips. • Welcome Gold Mines (1995; PP39039/MR3392): Collected 345 BLEG, rock chip, and stream sediment samples within the PPA. Anomalous gold results were reported; however, no systematic follow up drilling or detailed geochemical infill programs were completed. • Various Operators (1988–2007; HPD NZ, Newmont): Collected <200 stream sediment and rock chip samples across and adjacent to the area. Some gold anomalies were identified but not pursued. No systematic soil sampling was undertaken. • Glass Earth Gold (2007–2010; PP39322/MR4666): Held tenements over the entire PPA. Activities included airborne geophysics, limited soil/stream/chip sampling, and mapping, though most of this was focused to the northeast (Rock and Pillar Range) and northwest (Serpentine Flat). No significant anomalies were returned within the current PPA. Legacy data compilation was completed. • Lammer Resources Ltd (2022–2024; MR7162): Carried out soil sampling over the northeastern part of the PPA. Identified mineralisation trends and terrane boundaries, but results were not sufficiently encouraging to justify further work and the area was relinquished. • These historical efforts highlight the presence of localised gold and pathfinder anomalies but confirm the lack of systematic modern exploration, particularly within the core of the permit area. • In 2007 (MR4325) Glass Earth (NZ) Ltd conducted a regional airmag / EM survey over central Otago which covered the present permit. • Collectively, historic exploration confirms the presence of localised gold and pathfinder element anomalies (Au–Sb–W), but highlights the absence of systematic soil geochemistry, structural mapping, or drill testing within the core structural corridors of the current permit area.
Geology	Deposit type, geological setting and style of mineralisation.	<ul style="list-style-type: none"> • The Lammerlaw Project lies across and south of the regional boundary between the Caples and Torlesse terranes within the Otago Schist Belt, a critical contact zone associated with regionally significant metamorphism and deformation. The permit is underlain predominantly by greenschist facies Caples Terrane metasediments (TZ3), and is structurally situated on the southern limb of a broad antiform. The Caples–Torlesse boundary is interpreted to play a key role in focusing deformation and fluid flow, with mapped shear zones and late quartz veining commonly associated with arsenopyrite, stibnite, scheelite, and minor gold. These features, combined with the analogous metamorphic setting to the Hyde–Macraes Shear Zone, are consistent with structural and metamorphic settings known to host Macraes-style orogenic gold mineralisation within the Otago Schist Belt.
Drill hole Information	<p>A summary of all information material to the understanding of the exploration results, including a tabulation of the following information for all Material drill holes:</p> <p>easting and northing of the drill hole collar elevation or RL (Reduced Level – elevation above sea level in metres) of the drill hole collar dip and azimuth of the hole downhole length and interception depth hole length.</p> <p>If the exclusion of this information is justified on the basis that the information is not Material and this</p>	<ul style="list-style-type: none"> • No drilling has been conducted within the current permit area by the Company, and no historic drilling records relevant to the current permit area have been identified

Criteria	JORC Code explanation	Commentary
	<i>exclusion does not detract from the understanding of the report, the Competent Person should clearly explain why this is the case.</i>	
Data aggregation methods	<i>In reporting Exploration Results, weighting averaging techniques, maximum and/or minimum grade truncations (eg cutting of high grades) and cut off grades are usually Material and should be stated. Where aggregate intercepts incorporate short lengths of high grade results and longer lengths of low grade results, the procedure used for such aggregation should be stated and some typical examples of such aggregations should be shown in detail. The assumptions used for any reporting of metal equivalent values should be clearly stated.</i>	<ul style="list-style-type: none"> Not applicable no drilling or sampling completed by the Company.
Relationship between mineralisation widths and intercept lengths	<i>These relationships are particularly important in the reporting of Exploration Results. If the geometry of the mineralisation with respect to the drill hole angle is known, its nature should be reported. If it is not known and only the down hole lengths are reported, there should be a clear statement to this effect (eg 'down hole length, true width not known').</i>	<ul style="list-style-type: none"> Not Applicable no drilling or sampling completed
Diagrams	<i>Appropriate maps and sections (with scales) and tabulations of intercepts should be included for any significant discovery being reported These should include, but not be limited to a plan view of drill hole collar locations and appropriate sectional views.</i>	<ul style="list-style-type: none"> Not Applicable no drilling or sampling completed
Balanced reporting	<i>Where comprehensive reporting of all Exploration Results is not practicable, representative reporting of both low and high grades and/or widths should be practiced to avoid misleading reporting of Exploration Results.</i>	<ul style="list-style-type: none"> Not Applicable no drilling or sampling completed
Other substantive exploration data	<i>Other exploration data, if meaningful and material, should be reported including (but not limited to): geological observations; geophysical survey results; geochemical survey results; bulk samples – size and method of treatment; metallurgical test results; bulk density, groundwater, geotechnical and rock characteristics; potential deleterious or contaminating substances.</i>	<ul style="list-style-type: none"> Publicly available historic reports (MR2102, MR2126, MR3392, MR4666, MR7162) academic publications (Mackenzie et al., 2016) document reconnaissance scale stream sediment, rock chip, and limited soil sampling programs. These datasets indicate localised gold and pathfinder anomalies but are insufficient to define mineralised continuity or grade distribution.
Further work	<i>The nature and scale of planned further work (eg tests for lateral extensions or depth extensions or large scale step out drilling). Diagrams clearly highlighting the areas of possible extensions,</i>	<ul style="list-style-type: none"> Reprocessing and reinterpretation of historic airborne magnetic and electromagnetic datasets using modern filtering and structural inversion techniques. Reconnaissance field mapping and geochemical sampling Structural analysis of mapped shear zones to define priority targets for

Criteria	JORC Code explanation	Commentary
	<i>including the main geological interpretations and future drilling areas, provided this information is not commercially sensitive.</i>	future drilling