

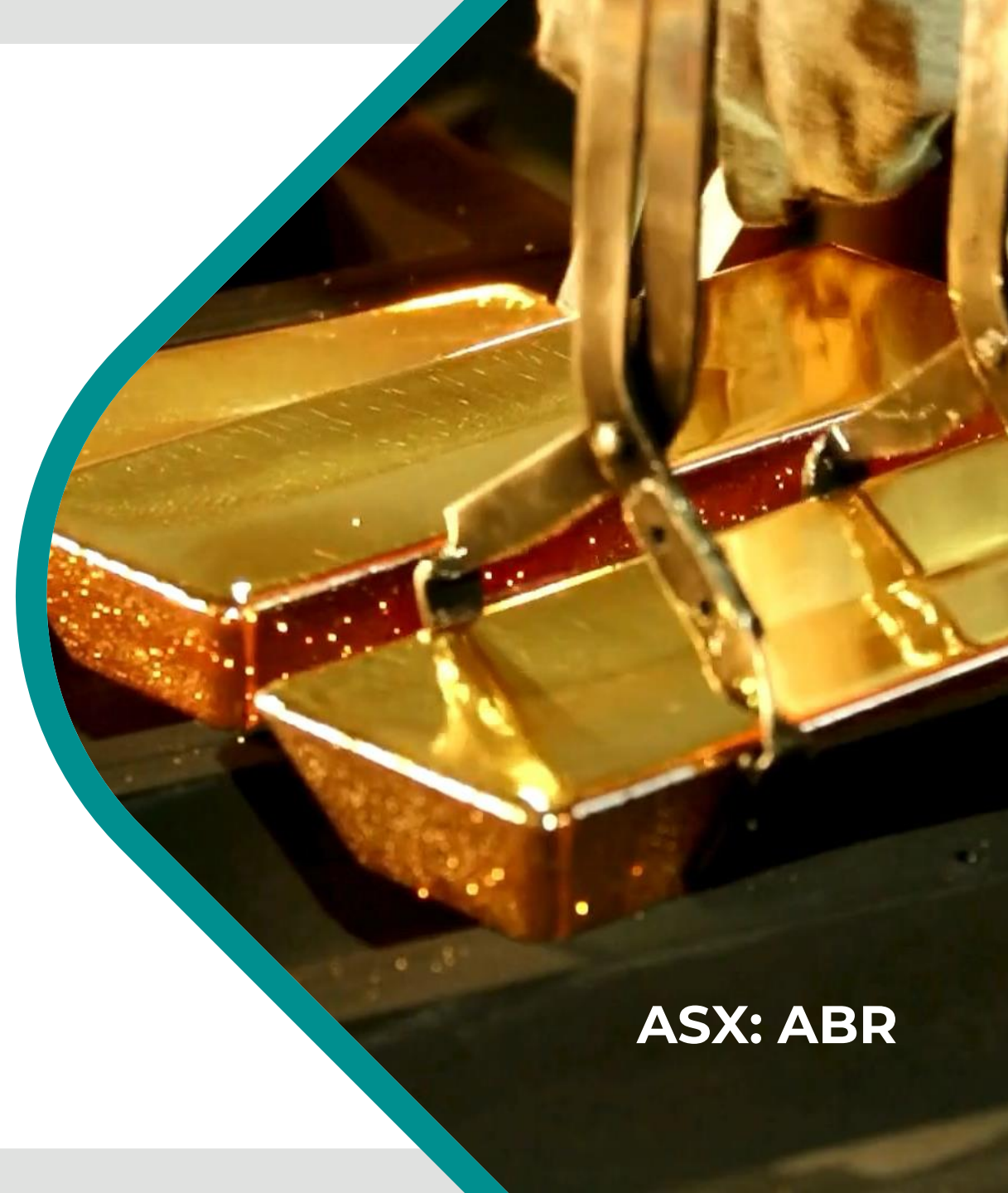


# Company Presentation

**Gold production focus**  
**Antimony exploration upside**

---

February 2026



**ASX: ABR**

# COMPETENT PERSON'S STATEMENT AND DISCLAIMER



## Foreign Estimate Statements

The Foreign Estimate of the deposit for the Golden Pike Gold Project referred to in this presentation was completed in 2011 for Portage Minerals Inc. The estimate was prepared in accordance with Canadian N43 - 101 but has been treated as a foreign estimate as a competent person has not undertaken sufficient work to classify the estimates in accordance with the JORC Code 2012 and the ASX listing rules and has not signed off on the estimate as a JORC Code mineral resource. It is uncertain whether following evaluation and further exploration work that the historical estimates will be able to be reported as mineral resources in accordance with the JORC Code.

The information in this announcement that relates to the Foreign Estimate in respect of the Mineral Claim is based on information compiled by Mr Ashley Jones, who is a member of the Australasian Institute of Mining and Metallurgy (AusIMM) and qualifies as a 'Competent Person'. Mr Jones is a director of Albright Metals Limited. Mr Jones confirms that the information contained in this announcement about the Foreign Estimate is an accurate representation of the available data and studies for the Mineral Claim.

## Forward Looking Statements

This presentation is for information purposes only. Neither this document nor the information contained in it constitutes an offer, invitation, solicitation or recommendation in relation to the purchase or sale of shares in any jurisdiction. This Presentation may not be distributed in any jurisdiction except in accordance with the legal requirements applicable in such jurisdiction. Recipients should inform themselves of the restrictions that apply in their own jurisdiction. A failure to do so may result in a violation of securities laws in such jurisdiction. This document does not constitute investment advice and has been prepared without taking into account the recipient's investment objectives, financial circumstances or particular needs and the opinions and recommendations in this representation are not intended to represent recommendations of particular investments to particular persons. Recipients should seek professional advice when deciding if an investment is appropriate. All securities transactions involve risks, which include (among others) the risk of adverse or unanticipated market, financial or political developments. No responsibility for any errors or omissions from this document arising out of negligence or otherwise is accepted.

The presentation contains "forward-looking information" within the meaning of applicable securities legislation. Forward-looking information may include, but is not limited to, information with respect to the future financial and operating performance of the Company, its affiliates and subsidiaries, potential investments, the estimation of mineral reserves and mineral resources, realisation of mineral reserves and resource estimates, costs and timing of development of the Company's projects, costs and timing of future exploration, timing and receipt of approvals, consents and permits under applicable legislation, results of future exploration and drilling and adequacy of financial resources.

Forward-looking information is based on the reasonable assumptions, estimates, analysis and opinions of management of the Company made in light of their experience and their perception of trends, current conditions and expected developments, as well as other factors that management believes to be relevant and reasonable in the circumstances at the date that such statements are made, but which may prove to be incorrect. The Company believes that the assumptions and expectations reflected in such forward-looking information are reasonable.

Although the Company has attempted to identify important factors that could cause actual results to differ materially from those contained in forward-looking information, there may be other factors that cause results not to be as anticipated, estimated or intended. There can be no assurance that such information will prove to be accurate, as actual results and future events could differ materially from those anticipated in such information. Accordingly, readers should not place undue reliance on forward-looking information. The Company does not undertake to update any forward-looking information, except in accordance with applicable securities laws.

# CORPORATE SNAPSHOT



**1.49B**

SHARES ON ISSUE

**A\$0.005**

SHARE PRICE

**A\$7.4M**

MARKET CAP

**A\$6.4M**

ENTERPRISE VALUE

(cash ~A\$1M as at 31/12/2025)



**GREG HILL**

Chief Executive Officer

A seasoned engineering and project delivery executive with over 30 years of experience in the resources sector, including mineral processing, feasibility studies and large-scale project execution across a diverse range of commodities and jurisdictions.

Mr Hill holds a BEng (Hons) in Mechanical Engineering and a Masters of Commerce in Finance Management and Marketing. He is a member of the Australasian Institute of Mining and Metallurgy (AusIMM) and a member of the Australian Institute of Company Directors (MAICD).



**IAN STUART**

Non-Executive Chair

Mr Stuart is a geologist with experience in the finance and mining industries. He holds an Honours degree in Geology, is a Fellow of the Financial Services Institute of Australasia and is a member of the Australian Institute of Company Directors. Ian has extensive experience in capital markets and is conversant with public company governance and management across international jurisdictions.

Mr Stuart is Non-Executive Chair of Star Minerals Ltd (ASX: SMS).



**LESLIE INGRAHAM**

Non-Executive Director

Mr Leslie Ingraham has over 40 years of experience in business. He has performed the roles of Executive and Non-executive Director roles for ASX listed companies during his career.

Mr Ingraham's successful work as a consultant for private companies, in addition to his works with publicly listed companies on the Australian Securities Exchange, has resulted in several listings on the ASX and AIM, including Albright Metals.



**ASHLEY JONES**

Non-Executive Director

Mr Jones is a geologist with over 20 years of diverse exploration, mine geology, and management experience in Australia and Africa. He has project development expertise in feasibility-level projects, with a particular focus on resources and mine development. He has a BSc (Hons) Geology, Master of Applied Finance and an MBA. He is a member of AusIMM and FINSIA.

Mr Jones is Managing Director of Star Minerals Ltd (ASX: SMS).



**GEMMA LEE**

Principal Geologist

Ms Gemma Lee is a geologist with 20 years of experience in the mining industry in Western Australia, with extensive experience in resource development exploration at advanced exploration sites and working in open pit and underground mines. Gemma graduated from Curtin University of Technology with a BSc. Applied Geology (Hons), is a member of the Australian Institute of Geoscientists (AIG) and a Graduate of the Australian Institute of Company Directors (GAICD).

Ms Lee is Non-Executive Director of Star Minerals Ltd (ASX: SMS).

**ASX: ABR**

# ALBRIGHT METALS LIMITED (ASX: ABR)



- Albright Metals Limited (ASX: ABR) is focused on exploration for gold and antimony in New Brunswick, Canada and copper-gold and manganese resources in Western Australia.
- Our mission is to grow investor value by supplying critical metals to meet the growing demands of innovation and global transformation.
- Established in the Tier-1 mining jurisdiction of Western Australia, Albright Metals operates a strategic portfolio of projects across Canada and Australia - spanning exploration through to development and production.

**ASX: ABR**

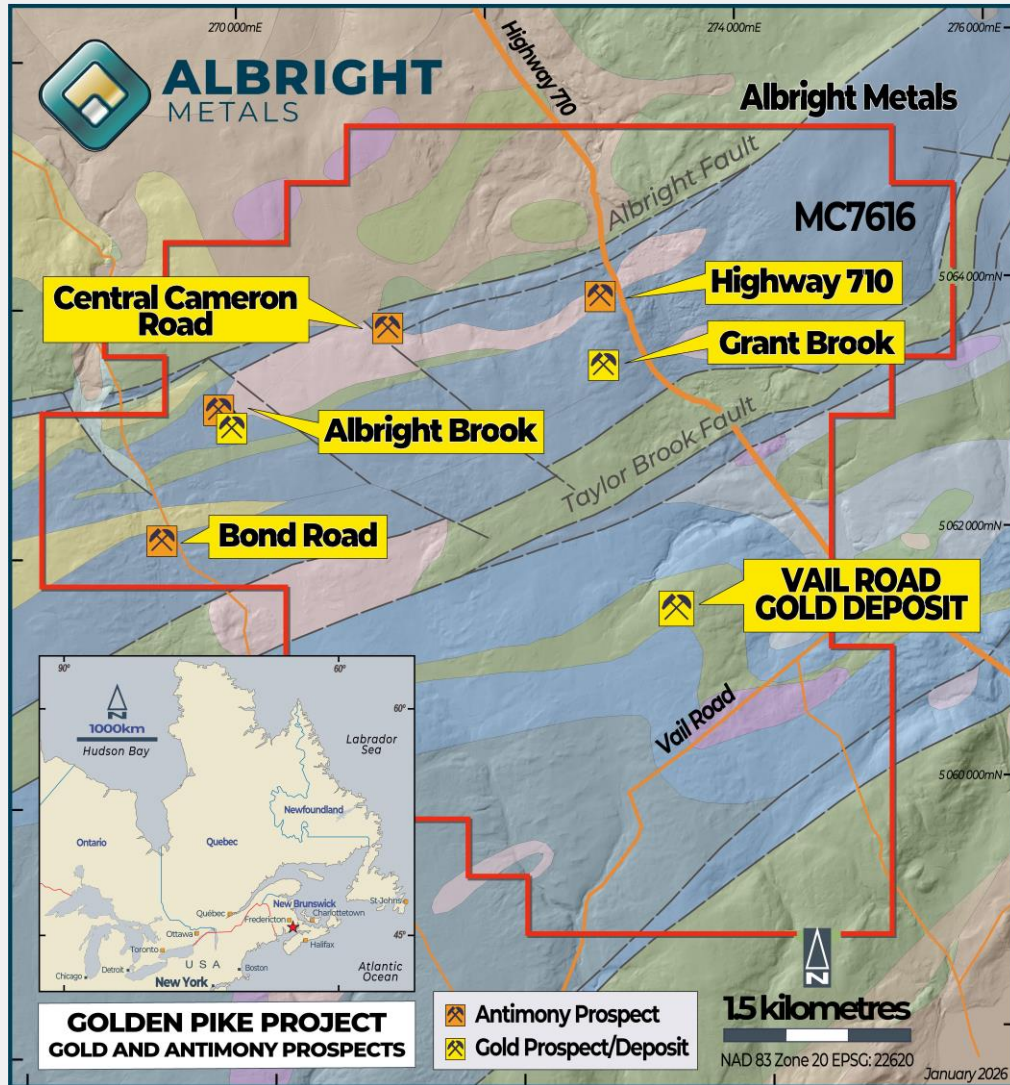
# GOLDEN PIKE PROJECT – Au Sb

## Prime Project Location



- The Golden Pike Project is located in New Brunswick, Canada which has a mild, maritime climate.
- New Brunswick has a long history of antimony mining at Lake George; ore grade was around 4% Sb.
- Meetings with the Government of New Brunswick have reinforced their commitment to developing a strong mining industry in the province.
- Close to major national infrastructure and close to the USA border. USA has been investing directly in antimony projects due to its criticality for defense industries.
- Multiple local contractor options provide cost competitive exploration services.

# GOLDEN PIKE PROJECT – Au Sb



- Albright Metals has optioned Mineral Claim 7616 which covers 3,292ha across the Annidale geological belt
- Prior exploration has focused on gold and includes approximately 20,000m of diamond drilling on the **Vail Road high-grade gold deposit**.
- The property includes the **Bond Road Antimony Prospect** which has yielded boulders grading up to **57% Sb**.
- Soil geochemistry and prior drilling has discovered gold and antimony mineralisation at multiple locations.
- Geophysics identifies NW fault structures in the same orientation as Bald Hill antimony between major regional thrust faults (Albright Brook and Taylor Brook).
- Significant unexplored areas on and adjacent to the mapped fault structures.
- Areas to the south of Vail Road highly prospective for gold mineralization, featuring high grade boulder float **up to 244g/t Au**.

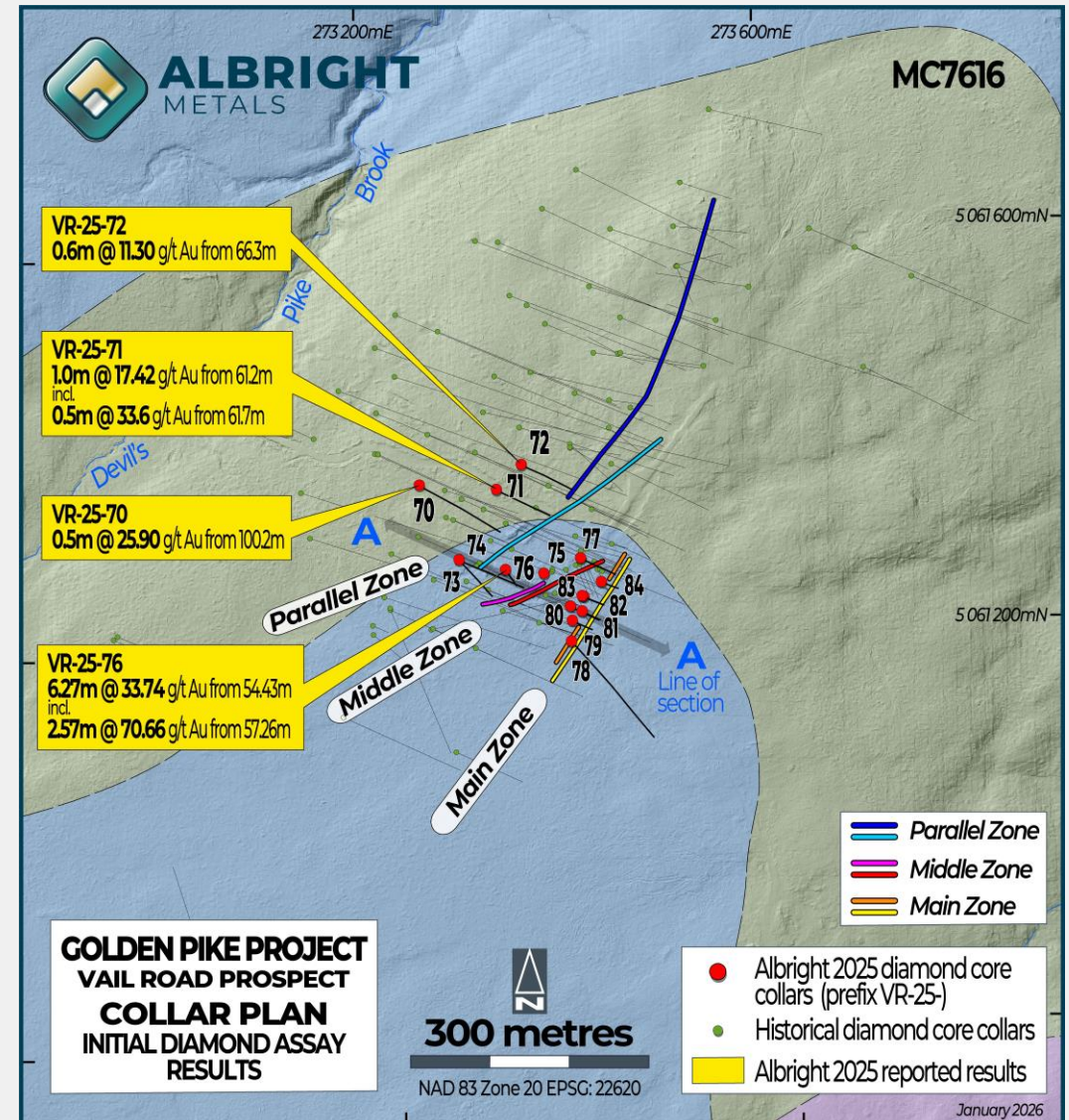
# HIGH-GRADE GOLD

- Drill program at the **Vail Road Gold Deposit** was completed in December 2025.
- Key objectives of the program included:
  - Infill drilling to test continuity.
  - Replicate some historical holes as QA for a pending JORC-compliant mineral resource estimation.
  - Collect structural data on the vein contacts.
  - Acquire samples for metallurgical recovery test work.

- First assay results from drilling include down hole intercepts:<sup>1</sup>

Hole ID	Intercept
VR-25-70	0.6 m @ 1.35 g/t Au from 19.4 m
VR-25-70	0.5 m @ 25.9 g/t Au from 100.2 m
VR-25-70	0.77 m @ 4.23 g/t Au from 116.33 m
VR-25-71	0.6 m @ 1.5 g/t Au from 27.25 m
VR-25-71	1 m @ 17.42 g/t Au from 61.2 m
including	0.5 m @ 33.6 g/t Au from 61.7 m
VR-25-72	0.6 m @ 11.3 g/t Au from 66.3 m
VR-25-76	<b>6.27 m @ 33.74 g/t Au</b> from 54.43 m
including	<b>2.57 m @ 70.66 g/t Au</b> from 57.26 m

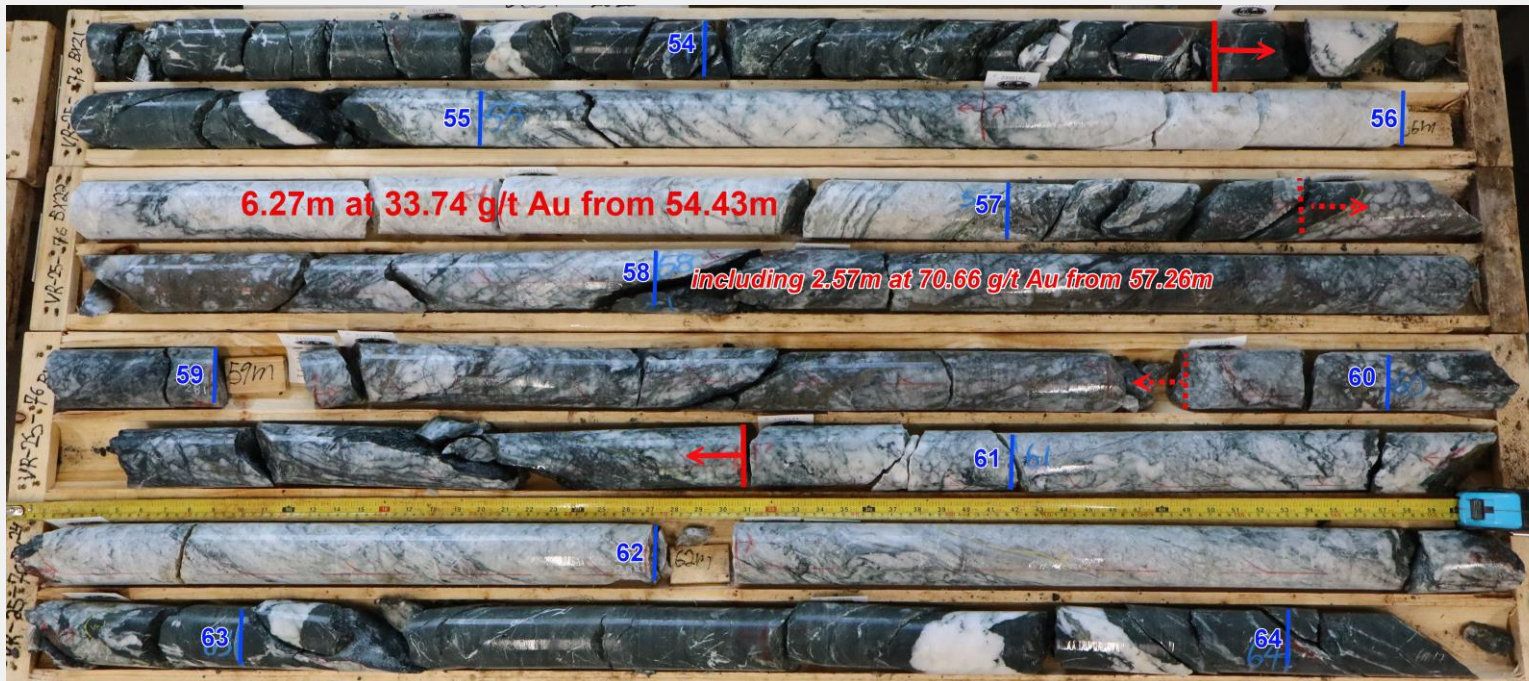
- Assay results are pending for remaining drill holes.



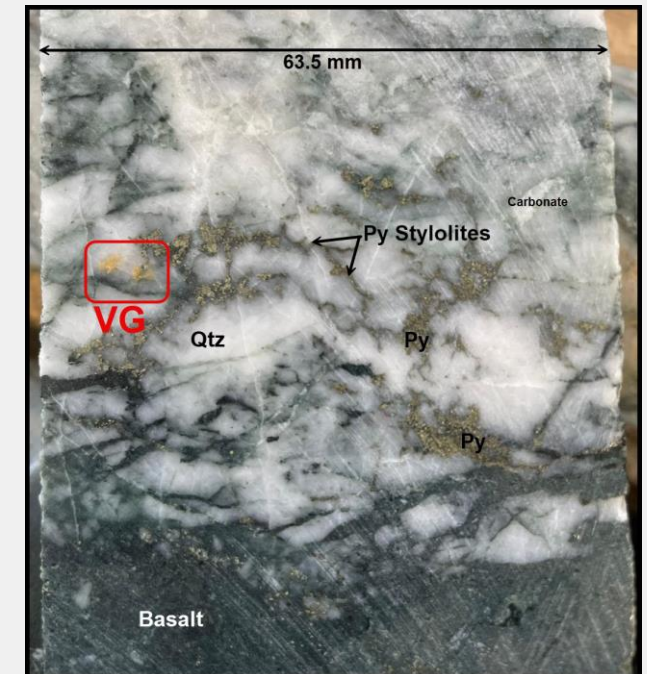
<sup>1</sup>ASX announcement 28/1/2026 'High-Grade Gold Results for Golden Pike Project'

# HIGH-GRADE GOLD

- Results from the 2025 diamond drill program **validate historical work** and interpretation.
- The Vail Road deposit remains open at depth.
- Similar targets on untested areas of the claim occur east and south of the Vail Road gold deposit, indicated by soil and boulder anomalism.
- Next step is to develop a JORC-compliant mineral resource estimate for the Vail Road gold deposit.



**Mineralised Quartz Vein in DDH VR-25-76<sup>1</sup>**



**Visible Gold (VG) at 62.15m depth VR-25-71**

<sup>1</sup>ASX announcement 28/1/2026 'High-Grade Gold Results for Golden Pike Project'

# HIGH-GRADE GOLD



- The Vail Road Gold deposit has a Foreign Estimate of **214.8kt @ 9.6g/t Au for 66,300 oz.**<sup>1</sup>
- Foreign estimate was completed in 2015 when the gold price was circa USD1,500/oz and used a high cut-off grade of 5g/t Au.

2011 Foreign Estimate for the Vail Road Gold Deposit by Roscoe Postle Associates Inc.

Classification	Zone	Tonnes ('000)	Au (g/t)	Oz ('000)
Inferred	Main Zone	78.2	11.47	28.8
Inferred	Parallel Zone	136.6	8.54	37.5
<b>Inferred</b>	<b>Total</b>	<b>214.8</b>	<b>9.6</b>	<b>66.3</b>

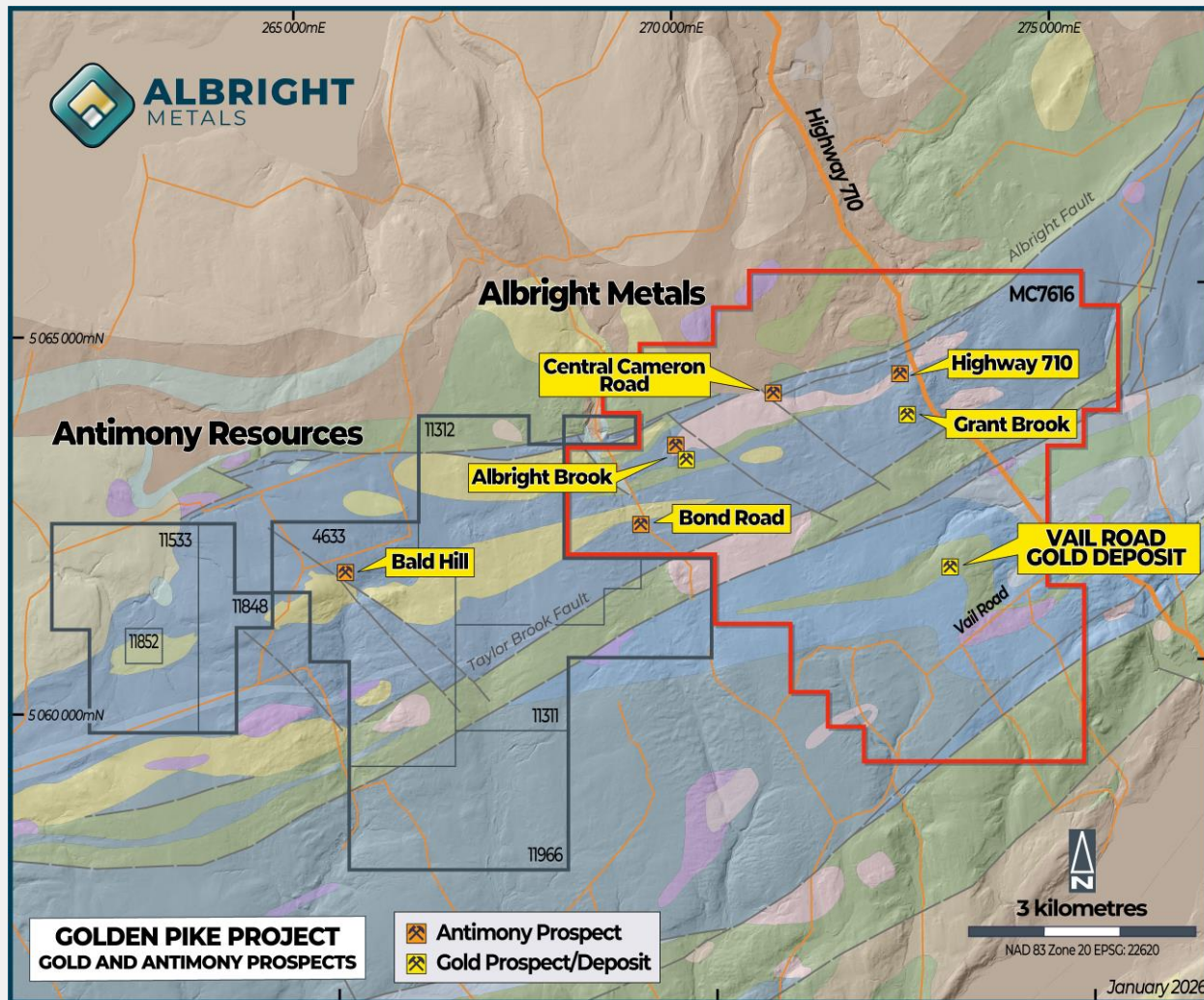
- Results from the 2025 diamond drill program **validate historical work** and there is no material impact on the reliability of the foreign estimate or Albright Metals' ability to verify the foreign estimate as mineral resources in accordance with Appendix 5A of the ASX listing rules

**Cautionary Statement:** the Foreign Estimate of the deposit for the Golden Pike Gold Project (Vail Road Deposit) referred to in this presentation was completed in 2011 for Portage Minerals Inc. The estimate was prepared in accordance with Canadian N43 - 101 but has been treated as a foreign estimate as a competent person has not undertaken sufficient work to classify the estimates in accordance with the JORC Code 2012 and the ASX listing rules and has not signed off on the estimate as a JORC Code mineral resource. It is uncertain whether following evaluation and further exploration work that the historical estimates will be able to be reported as mineral resources in accordance with the JORC Code. The information in this presentation that relates to the Foreign Estimate in respect of the Mineral Claim is based on information compiled by Mr Ashley Jones, who is a member of the Australasian Institute of Mining and Metallurgy (AusIMM) and qualifies as a 'Competent Person'. Mr Jones is a director of Albright Metals Limited. Mr Jones confirms that the information contained in this presentation about the Foreign Estimate is an accurate representation of the available data and studies for the Mineral Claim.

Albright Metals confirm in this subsequent public report that the supporting information provided in the initial market announcement of the foreign estimate continues to apply and has not materially changed.

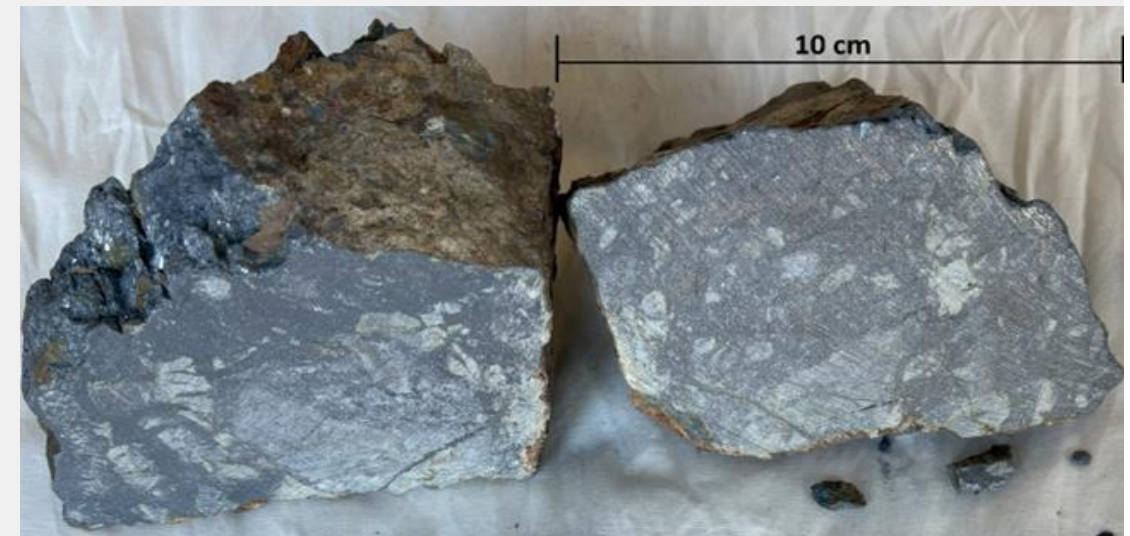
<sup>1</sup>ASX announcement 21/05/2025 'Acquisition of Advanced High-Grade Gold Project'

# HIGH-GRADE ANTIMONY



The **Bond Road prospect** is similar to the Antimony Resources Bald Hill prospect located approximately 4km to the west, which has yielded multiple antimony drill intercepts **>15% Sb** along a NW trending vein (CSE: ATMY).

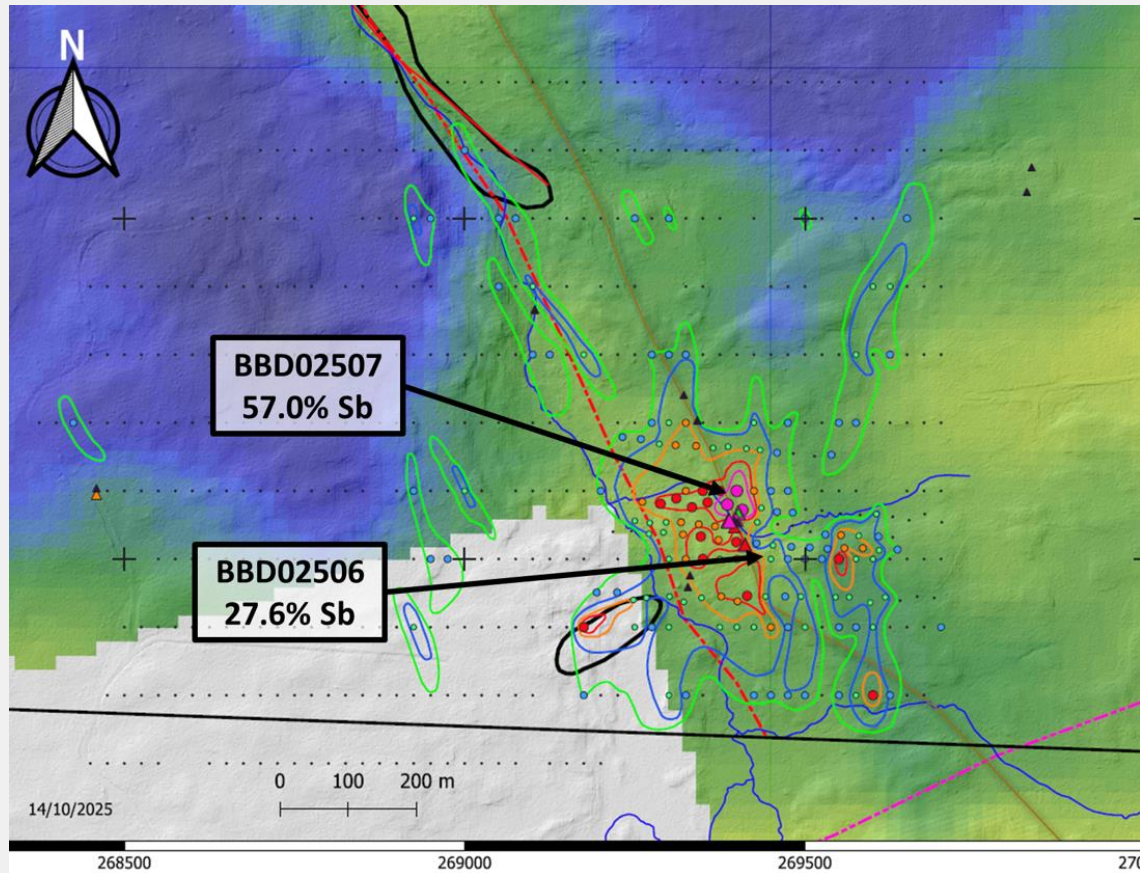
Similarities include the NW oriented fault, Bald Hill Formation Rhyolites and strong soil Sb anomalism.



BBD02506 – **27.6% Sb** and **1.61g/t Au**

**ASX: ABR**

# HIGH-GRADE ANTIMONY



Sb in soil contours with aerial resistivity map and high resolution LiDAR background

- Bond Road is a **high-grade antimony** occurrence which has yielded numerous boulder samples grading **>15% Sb**.
- Soil sampling program has shown high Sb values along a NW trending structure.
- Recent boulder samples collected by Albright Metals yielded antimony values of **27.6% Sb** and **57.0% Sb**.<sup>1</sup>
- Exploration drilling commenced in January 2026 targeting high-grade antimony veins.<sup>2</sup>
- Drilling program partially completed and suspended due to a weather event.
- Planning for rig re-mobilization within the next few weeks, subject to availability.

<sup>1</sup>ASX announcement 7/10/2025 'Highest Grade Antimony Rock Chip Samples Retrieved to Date'

<sup>2</sup>ASX announcement 8/1/2026 'Antimony Drilling Program Commenced'

# WHY ANTIMONY?

- Antimony is a **strategic** and **critical metal**.
- Chinese and Russian spheres dominate ~83% of global antimony mining.
- **Antimony price** outside China is around **US\$40,000/T**.
- Global shortage due to export controls by China and lack of supply of ores and concentrates.
- Canadian project location allows for secure transport to USA and European buyers.
- The US-DoW is **actively buying into and funding** critical mineral suppliers in North America, including Canadian projects

## Antimony Uses in the Technology Age



# ANTICIPATED NEWSFLOW FROM GOLDEN PIKE



**JAN  
2026**

First gold drilling results



**FEB  
2026**

Remaining gold drilling results



**MAR  
2026**

Antimony exploration results



**APR  
2026**

JORC-compliant gold resource incorporating recent drill results



**MAY  
2026**

Preliminary gold project development plans



ASX: ABR



**ALBRIGHT**  
METALS

**Greg Hill**  
**Chief Executive Officer**

191B Carr Place Leederville  
Western Australia 6007

Telephone: +61 8 9321 0001  
Email: [info@albrightmetals.com](mailto:info@albrightmetals.com)

Follow us: **in X**  
[albrightmetals.com](https://albrightmetals.com)

### **Join our community**

Receive alerts for announcements, news and updates direct to your inbox and engage with the **Albright Metals** team using the Q&A tool on our website.

**ASX: ABR**