



# Advancing High Value Critical Mineral Projects in Utah

*A Tier-one Jurisdiction and strategic part of  
America's future supply*

INVESTOR PRESENTATION | February 2026

ASX:DBO OTCQB: DBORF

## DISCLAIMER AND FORWARD LOOKING STATEMENTS

This presentation has been authorised for release by the Board of Diablo Resources Limited. It is not a prospectus nor an offer of securities for subscription or sale in any jurisdiction nor a securities recommendation. The information in this presentation is an overview and does not contain all information necessary for investment decisions. In making investment decisions, investors should rely on their own examination of Diablo Resources Limited (Company) and consult with their own legal, tax, business and/or financial advisers in connection with any acquisition of securities or interest in the Companies Projects. The information contained in this presentation has been prepared in good faith by the Company. However, no representation or warranty, express or implied, is made as to the completeness or adequacy of any statements, estimates, opinions or other information contained in this presentation. To the maximum extent permitted by law, the Company, its directors, officers, employees and agents disclaim liability for any loss or damage which may be suffered by any person through the use of, or reliance on, anything contained in or omitted from this presentation. Certain information in this presentation refers to the intentions of the Company, but these are not intended to be forecasts, forward looking statements, or statements about future matters for the purposes of the Corporations Act 2001 (Cth) or any other applicable law. The occurrence of events in the future are subject to risks, uncertainties and other factors that may cause the Company's actual results, performance or achievements to differ from those referred to in this presentation to occur as contemplated. The presentation contains only a synopsis of more detailed information available in relation to the matters described in this document and accordingly no reliance may be placed for any purpose whatsoever on the sufficiency or completeness of such information and to do so could potentially expose you to a significant risk of losing any of the property invested by you or incurring by you of additional liability. Recipients of this presentation should conduct their own investigation, evaluation and analysis of the business, data and property described in this presentation. In particular, any estimates or projections or opinions contained herein necessarily involve significant elements of subjective judgment, analysis and assumptions and you should satisfy yourself in relation to such matters.

## COMPETENT PERSONS STATEMENT

The information in this report regarding exploration results, exploration targets and the mineral resources is based on and fairly represents information compiled by Mr Lyle Thorne, a Competent Person who is a Member of the Australasian Institute of Mining and Metallurgy. Mr Thorne is an employee and shareholder of the Company and has sufficient experience that is relevant to the style of mineralisation and type of deposit under consideration and to the activity being undertaken to qualify as a Competent Person as defined in the 2012 Edition of the 'Australasian Code for Reporting of Exploration Results, Mineral Resources and Ore Reserves'. The Company confirms that it is not aware of any new information or data that materially affects the information included in prior market announcements and, in the case of exploration results, that all material assumptions and technical parameters underpinning the results in the relevant market announcement continue to apply and have not materially changed. The Company confirms that the form and context in which the Competent Person's findings are presented have not been materially modified from the original market announcement. All parties have consented to the inclusion of their work for the purposes of this presentation. The interpretations and conclusions reached in this presentation are based on current geological theory and the best evidence available to the author at the time of writing. It is the nature of all scientific conclusions that they are founded on an assessment of probabilities and, however high these probabilities might be, they make no claim for absolute certainty. Any economic decisions which might be taken on the basis of interpretations or conclusions contained in this presentation will therefore carry an element of risk.

This Presentation has been approved by the Board of Diablo Resources Ltd



# Experienced exploration team



**Paul Lloyd**  
Non-Executive Chairman

Chartered Accountant with over 30 years' commercial experience. He is the Managing Director of Prairie Lithium Limited (ASX: PL9,) and is Chairman of Lord Resources Limited (ASX:LRD) and BPM Minerals Limited (ASX:BPM).



**Mathew Blumberg**  
Non-Executive Director

Matthew holds an MBA from Yale University and a double Honours degree in Engineering and Commerce from The University of Western Australia. Mr Blumberg has extensive investment experience in both the USA and Australia and is currently a Director of Prairie Lithium Ltd (ASX: PL9).



**Greg Smith**  
Non-Executive Director

Geologist with over 45 years of experience, currently on the board of BPM Minerals Limited (ASX:BPM).



**Lyle Thorne**  
Chief Executive Officer

Geologist with over 30 years experience across multi-commodity exploration to feasibility studies worldwide. He is a Member of the Australasian Institute of Mining and Metallurgy.

## US critical minerals focus

Extensive US critical minerals experience

Utah-based exploration team with deep local knowledge

Ability to fast-track high-priority critical mineral targets (Cu, Ag, Sb)

Committed to efficient, discovery-focused exploration to drive shareholder value.

**Capital Structure**

Market Cap  
**\$5.9M**

Shares On Issue  
**235.8 M**

Top 20 Shareholders  
**33.7%**  
ownership

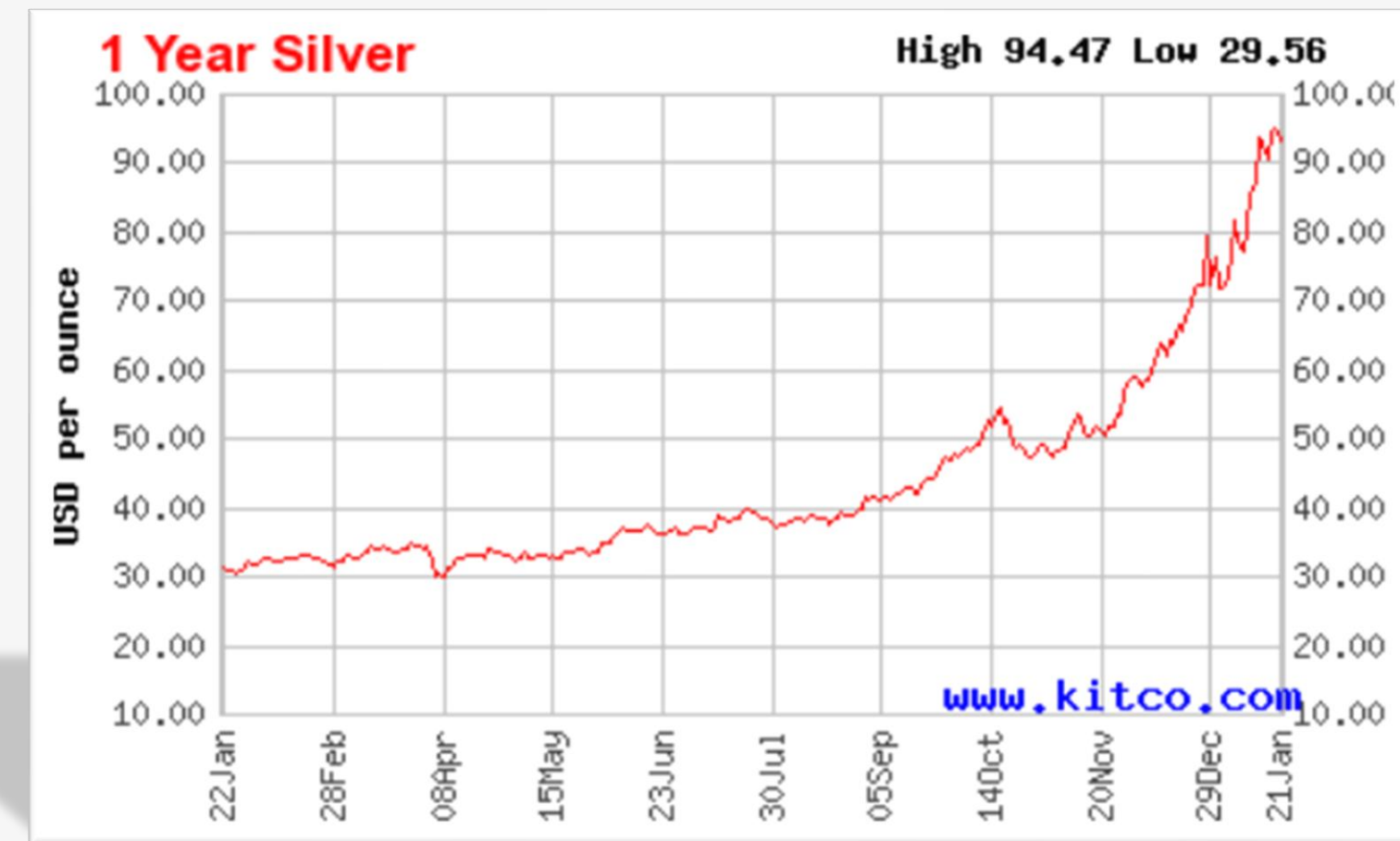
Share Price  
**\$.025**  
(30/1/2026)

## Silver, Copper, Antimony- Critical for the USA

With silver prices soaring close to 150% last year and another 38% already in January and demand continuing to accelerate, policy momentum further highlights the essential role of silver and copper in the clean-energy transition.

Federal policy aimed at strengthening the domestic supply of critical minerals—including silver, copper and antimony—has contributed to more efficient BLM permitting and faster exploration timelines in Utah.

The U.S. Government has identified critical minerals as a national priority, and the recent addition of copper and silver to the 2025 Critical Minerals List<sup>(1-2)</sup> underscores their strategic importance to economic resilience and national security.



# SILVER / COPPER / ANTIMONY FORECAST



- Silver demand is forecast to accelerate due to record industrial and photovoltaic consumption, reinforcing strong pricing conditions<sup>14</sup>. Silver prices remain near multi-decade highs, driven by structural deficits and surging industrial demand.
- The price of copper is expected to make substantial gains in 2026<sup>13</sup>, as demand for the industrial metal continues to outstrip supply, driven by growing demand for electric vehicles and clean energy infrastructure clashing with persistent supply disruptions<sup>12</sup>.
- Antimony has experienced one of the most dramatic price increases in the commodities sector<sup>15</sup>, driven by increased demand from traditional uses (like flame retardants) and new technologies like liquid metal batteries, alongside severe global supply constraints caused by China's export restrictions and mine closures.



# What is high-grade silver?

## What is considered a high-grade silver drill result?<sup>17</sup>

Generally, grades above **150 g/t** are considered high-grade, though economics depend on various other factors including commodity price, geology, mining costs, location etc.

- **Low grade: <50 g/t**
- **Medium grade: 50–150 g/t**
- **High grade: 150–1,000+ g/t<sup>17</sup>**

## Comparison of selected ASX-listed Silver Companies

Company	Code	Country	Deposit	Status	Ag g/t	Measured (Mt)	Indicated (Mt)	Inferred (Mt)	Total (Mt)	Resource Category	Standard	Other Metals
Sun Silver <sup>18</sup>	SS1	USA	Maverik Springs	PD	<b>68</b>	0	0	218	218	Mineral Resource	JORC	Au
Silver Mines <sup>19</sup>	SVL	AUS	Bowdens	F	<b>31</b>	100	43	36	179	Mineral Resource	JORC	Pb,Zn
Investigator Resources Ltd <sup>20</sup>	IVR	AUS	Paris	PD	<b>73</b>	0	17	7.2	24.2	Mineral Resource	JORC	Pb,Zn
Minthril Resources <sup>21</sup>	MTH	MEX	Copalquin	PD	<b>141</b>	0	0.7	1.7	2.4	Mineral Resource	JORC	Au
Boab Metals <sup>22</sup>	BML	AUS	Sorby Hills	F	<b>35</b>	12.6	11	23.7	47.3	Mineral Resource	JORC	Pb,Zn
Andean Silver <sup>23</sup>	ASL	Chile	Cerro Bayo	PD	<b>146</b>	0	0.4	7.8	8.2	Mineral Resource	JORC	Au

**Status**  
 PD= Pre-Development  
 F- Feasibility

# Two High-Value Critical Projects in Utah

*Tier-one jurisdiction and a key part of America's future supply*



## Two high value critical minerals project in the USA

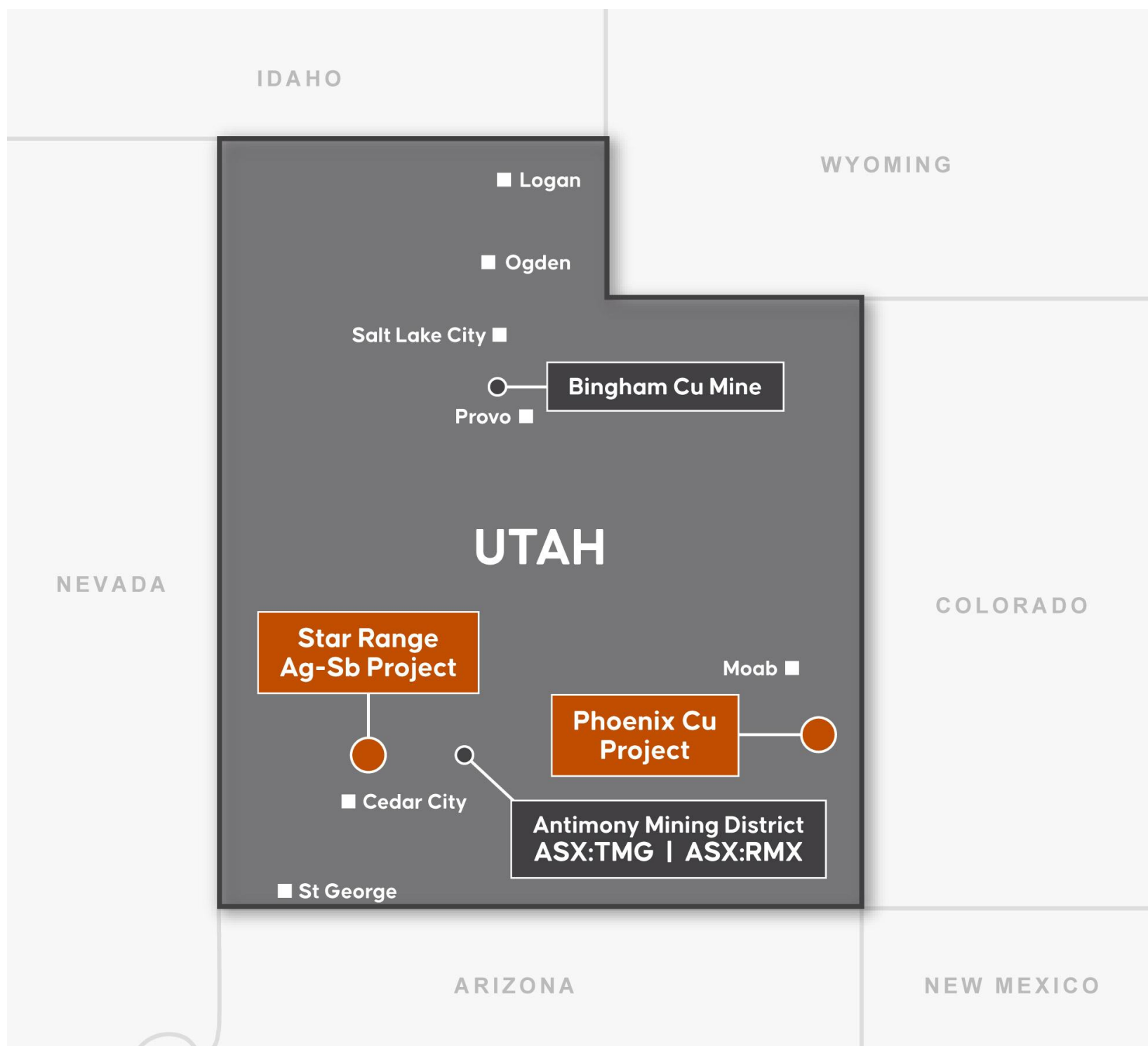
### Star Range Silver-Antimony Project

Recent sampling confirmed historical high-grade results to 8,760 g/t Ag and +1% Sb<sup>4</sup>, significant 2025-26 results included<sup>24,25</sup>;

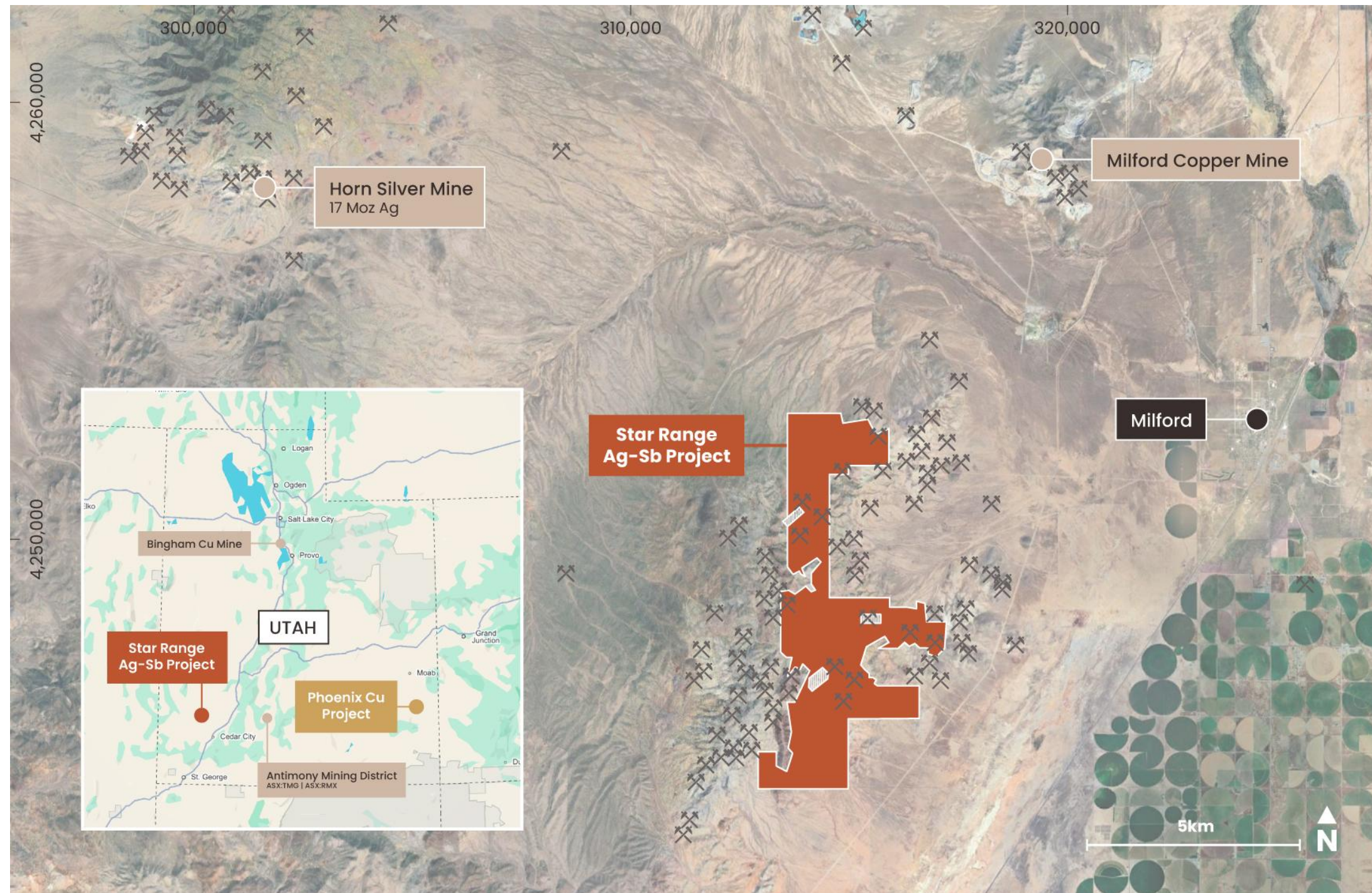
- 3,043 g/t Ag and 1.4 g/t Au
- 1,592 g/t Ag and 0.7% Sb
- 2,311 g/t Ag and 0.4% Sb
- 1,243 g/t Ag and 0.2% Sb
- 399 g/t Ag and 9.3 g/t Au

### Phoenix Copper Project

Drilling completed at high priority Fair Dinkum and Philadelphia Prospects with assay results pending<sup>26</sup>



# STAR RANGE SILVER ANTIMONY PROJECT



Located in Beaver County, southwestern Utah, USA. The project consists of 186 unpatented lode claims for ~3582 acres (14.5km<sup>2</sup>),

The Project is proximal to two significant mineral occurrences, the historical Horn Silver mine and the Milford Copper Mine.

The Horn Silver mine, one of the largest producers of silver in the United States until 1930<sup>3</sup>:

- **17 Moz of silver,**
- **25 Koz of gold** and
- 9 Mlb of copper, all from a single 20 acre (8ha) mining claim<sup>3</sup>

# STAR RANGE SILVER-ANTIMONY PROJECT- PROSPECT AREAS EXTENDED

Significant results returned from recent rock sampling <sup>24,25</sup>

## North Star Prospect

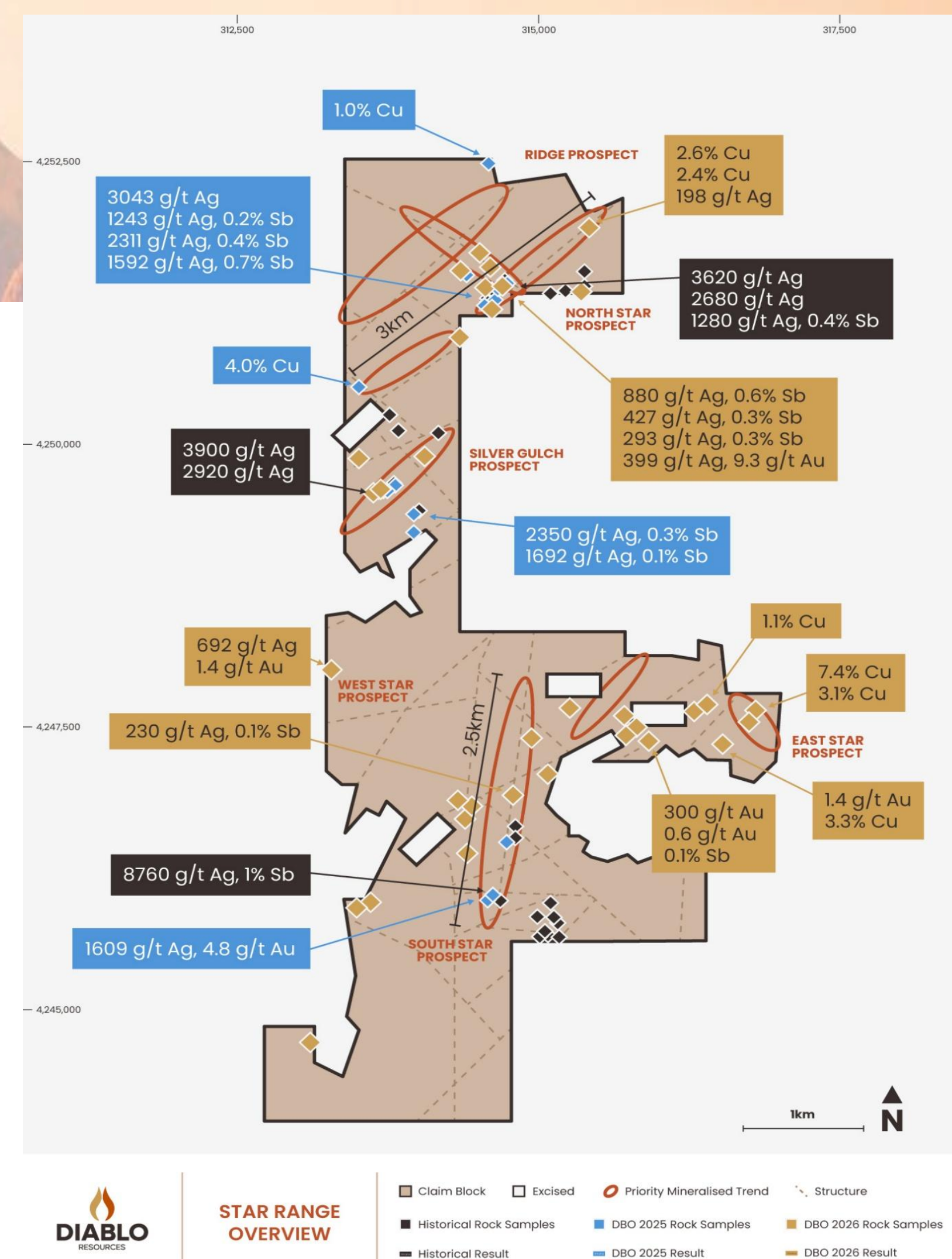
**3,043 g/t Ag and 1.4 g/t Au**  
**1,592 g/t Ag and 0.7% Sb**  
**2,311 g/t Ag and 0.4% Sb**  
**399 g/t Ag and 9.3 g/t Au**

## East Star Prospect

**7.4% Cu, 1 g/t Au and 263 g/t Ag**  
**3.1% Cu and 0.8 g/t Au**  
**3.3% Cu and 1.4 g/t Au**  
**1.6% Cu, 1 g/t Au and 137 g/t Ag**

## Silver Gulch Prospect

**2,350 g/t Ag and 0.3% Sb**  
**1,692 g/t Ag and 0.1% Sb**



# STAR RANGE Ag-Sb PROJECT HIGH GRADE ROCK SAMPLES TWO STYLES OF MINERALISATION

## NORTH STAR PROSPECT Breccia/Vein (CRD) Style (Ag-Sb-Cu-Au +/-Pb-Zn)<sup>24,25</sup>

## EAST STAR PROSPECT Skarn Style (Cu-Ag-Au)<sup>24,25</sup>



3043 g/t Ag, 1.37 g/t Au



1592 g/t Ag, 0.7% Sb



7.4% Cu, 263 g/t Ag, 1 g/t Au



3.3% Cu, 1.4 g/t Au

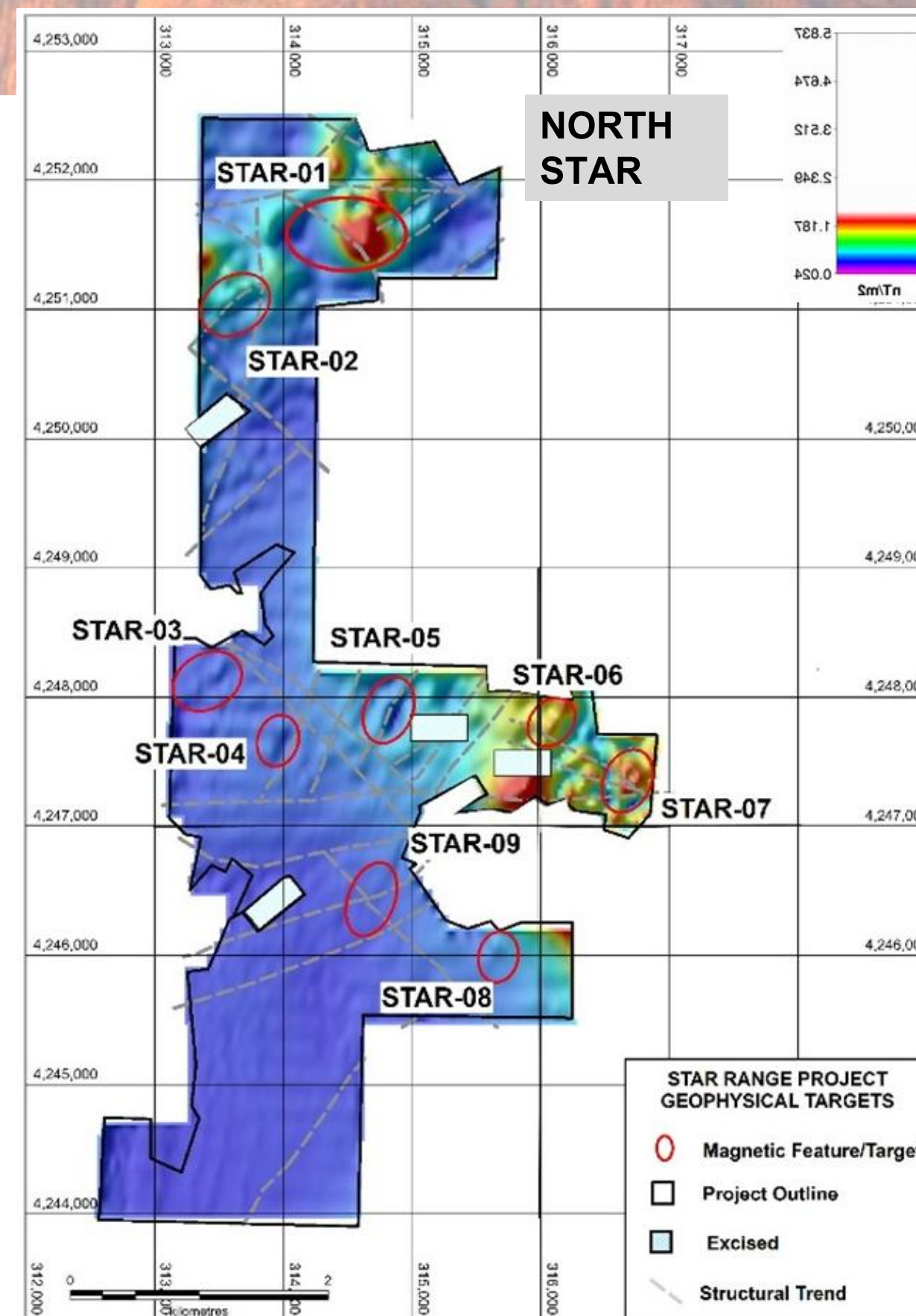
# STAR RANGE SILVER-ANTIMONY PROJECT

## – Drone Magnetic Survey

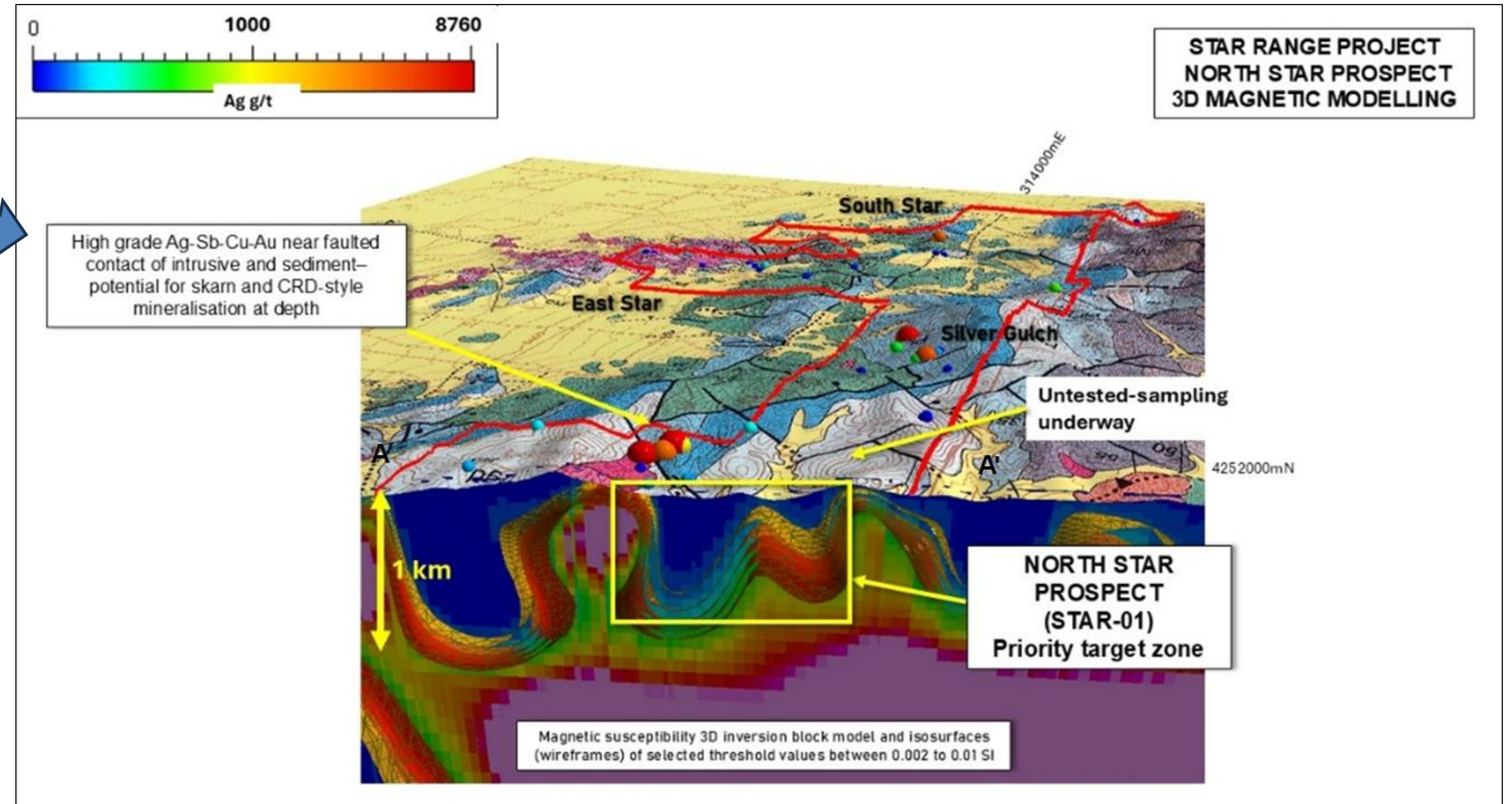
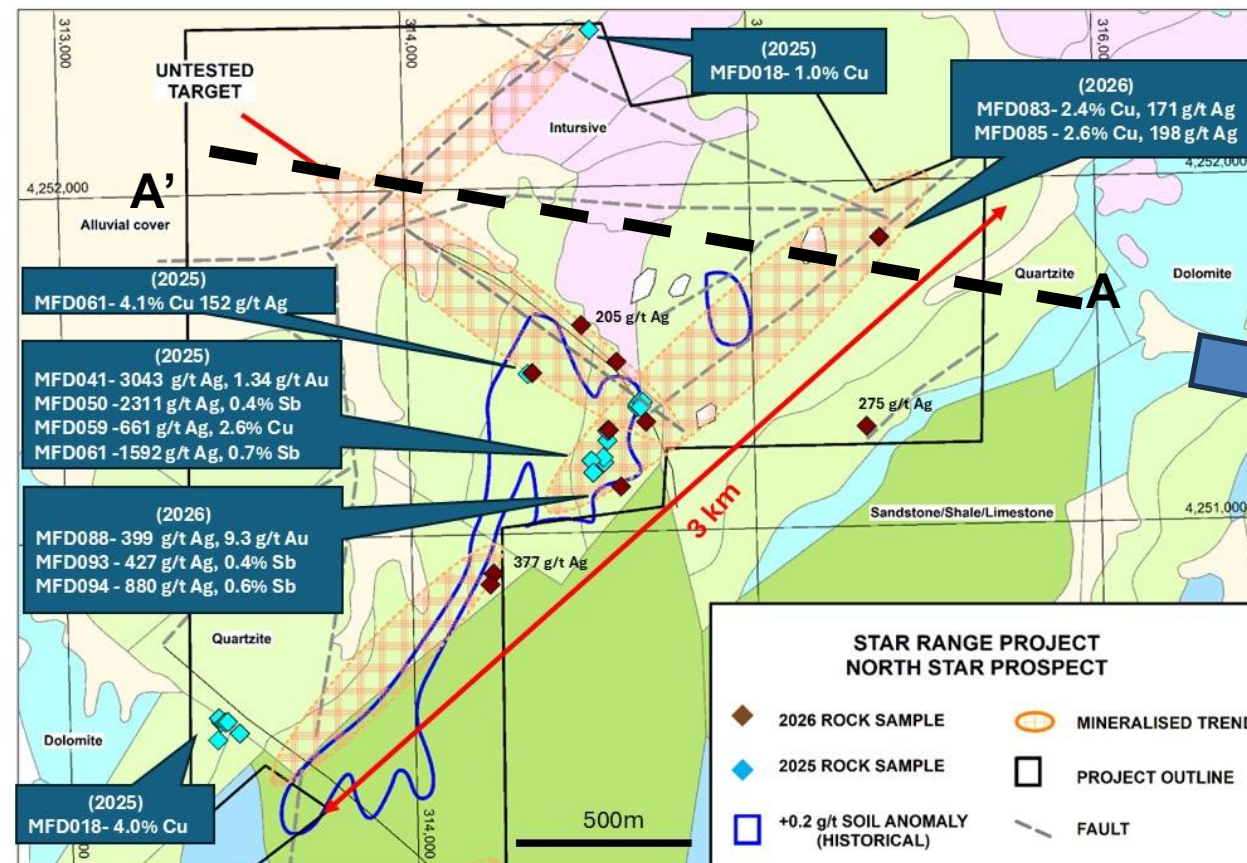
A total of nine priority targets have been identified<sup>27</sup>. High grade results from existing targets (e.g: East Star) overlie prospective mineralised structure/trends identified in magnetics that are open along strike.

### North Star Prospect- Highest Priority target <sup>27</sup>

- Interpretation and modelling of the drone magnetics identified the North Star Prospect (STAR01) area as **No.1 priority** due to its geological setting and structural architecture - complimented by high grade surface geochemical results.
- At North Star, further ground-based geophysical surveying (Induced Polarisation) to fine tune drill hole locations is in final planning.



# STAR RANGE SILVER-ANTIMONY PROJECT – 3D modelling of magnetics



- Favourable structural architecture identified in magnetics with high grade rocks samples (Ag-Cu-Sb-Au) overlying target zone<sup>27</sup>
- **Compelling Drill target**

3D view to the SSW of magnetic 3D inversion model, looking south with Ag (g/t) rock sample results and 1:50,000 scale geological mapping overlain on surface elevation - North Star Prospect (Section A-A')

# PHOENIX COPPER PROJECT

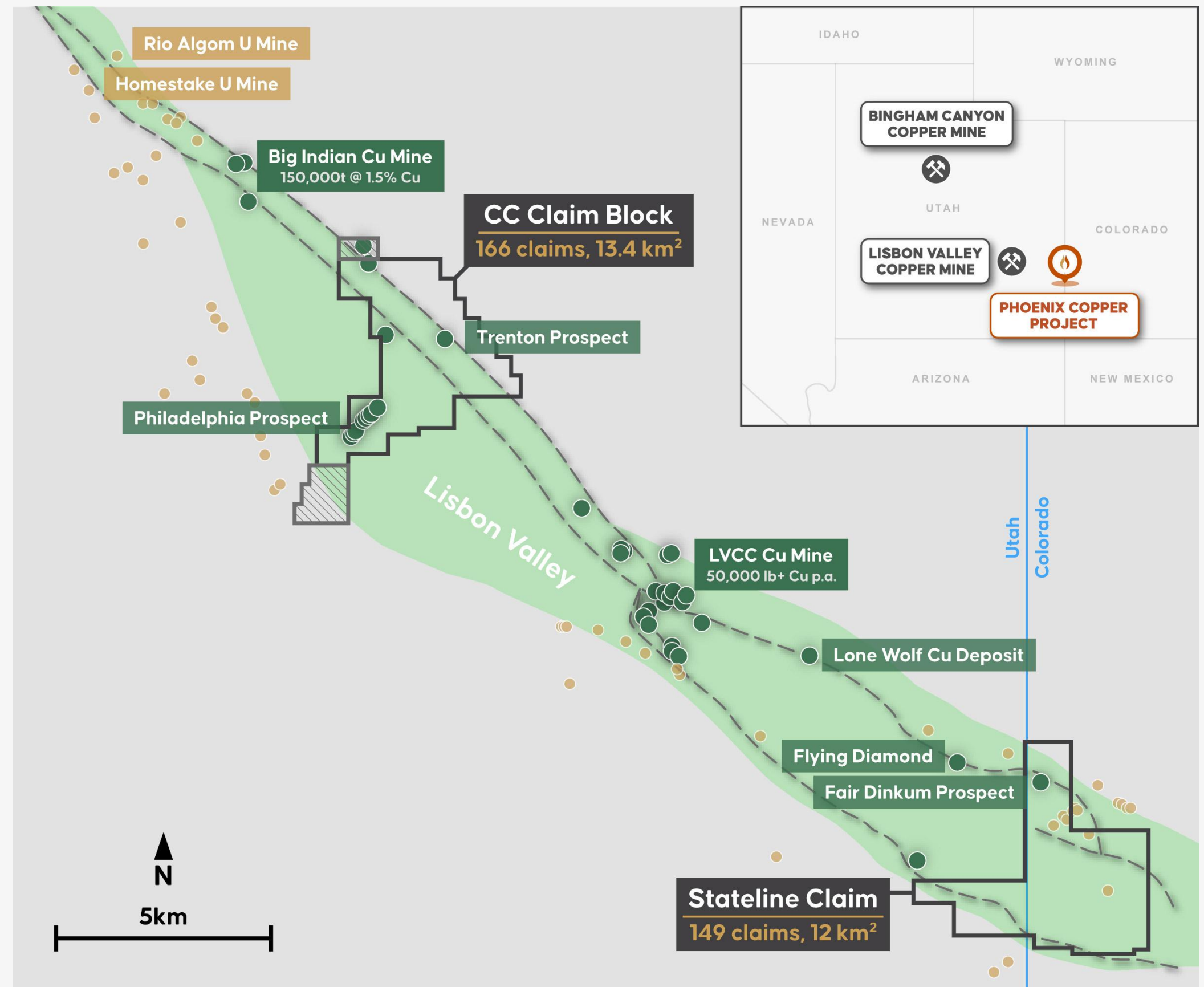
Located along strike from Lisbon Valley Mine (LVCC), the second largest copper mine in Utah<sup>(5)</sup>

315 lode claims for 25.5km<sup>2</sup> in two claim blocks, **CC** and **Stateline**

Covers extensions of known structures and sediments hosting Cu-Ag mineralisation

Close to existing infrastructure with year round access

LVCC sources copper ore from multiple pits for heap leaching/SXEW. It has a capacity to produce 54M lbs (24 Kt) of copper cathode per annum, with 743Mlb (370 Kt) Reserves/Resources <sup>(6)</sup>.



**PHOENIX COPPER PROJECT**  
**CC & Stateline Claim Blocks**

- Copper Mine/Occurrence
- Uranium Mine/Occurrence
- Existing Claim
- ▨ New Claim
- - - Major Fault
- State Line

# STATELINE CLAIM BLOCK

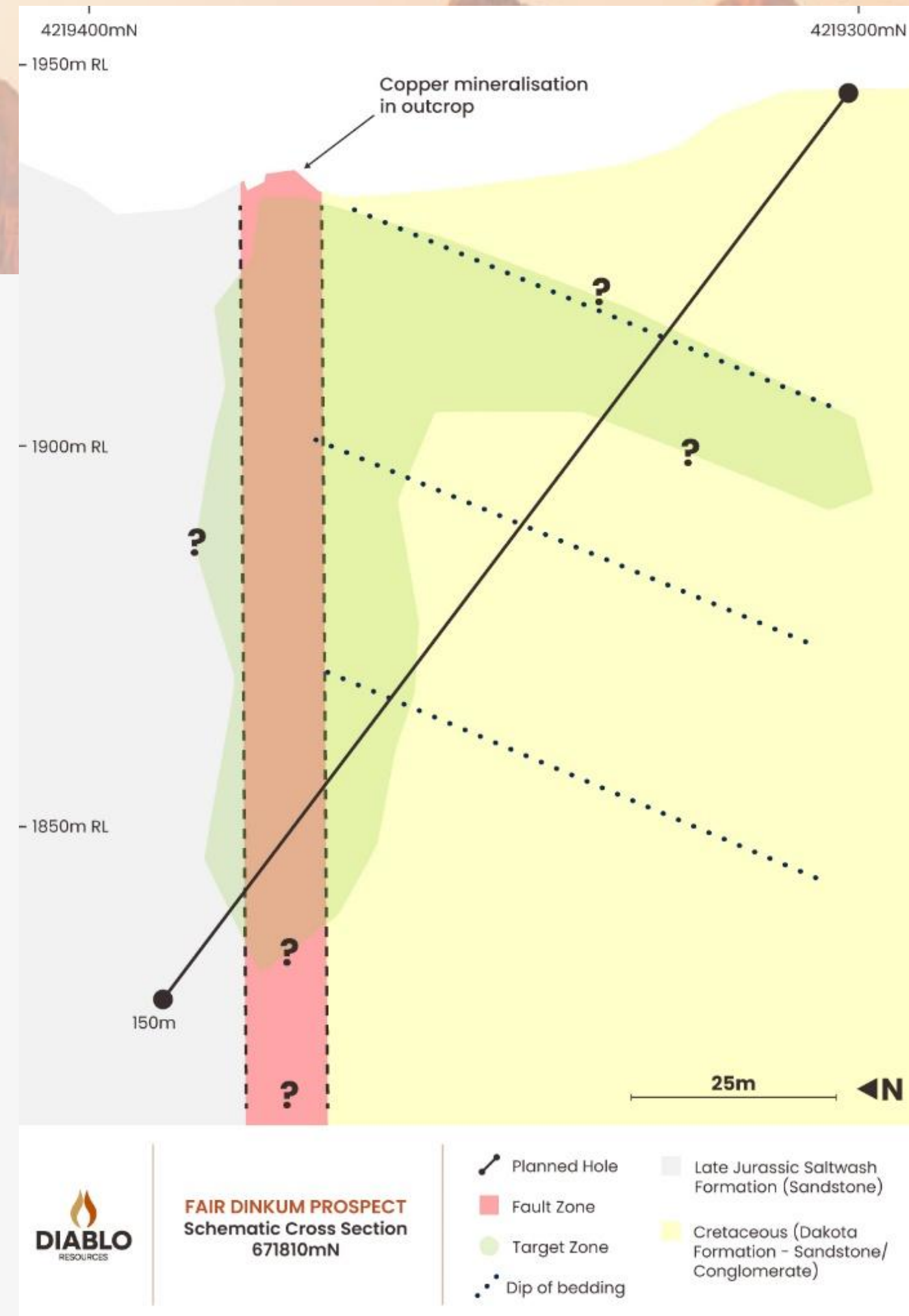
Priority Target along strike from known deposits

**Fair Dinkum Prospect** consists of sediment hosted copper mineralisation lying east of the Flying Diamond Copper deposit along the same fault system.

13 rock grab samples taken along the 100m of outcrop averaged **0.98% Cu up to a maximum of 2.76% Cu and 92g/t Ag (~3oz Ag)<sup>11</sup>**.

Malachite observed in old drill spoil 120m west of the outcrop<sup>11</sup>.

**DBO's maiden drilling completed with results awaited (7 holes).**



# NEXT STEPS

*Planned exploration structured to deliver a steady cadence of exploration results.*

*DBO team have track record of expediting exploration in priority target areas.*

*Continued review for further opportunities in the US Critical Minerals Sector.*



## STAR RANGE PROJECT

- Complete Induced Polarisation Survey (IP) over North Star Prospect
- Process and interpret IP data - fine tune drilling locations
- Plan and permit maiden drill program
- Continue exploration of priority target areas (geochemistry, mapping).

## PHOENIX COPPER PROJECT

- Assay results awaited (Fair Dinkum & Philadelphia)
- Update geological models to refine understanding of mineralisation controls, continuity, and scale in context with known copper deposits in the Lower Lisbon Valley.



# DIABLO

RESOURCES

**For further information:**

Paul Lloyd - Chairman

[pl@diabloresources.com.au](mailto:pl@diabloresources.com.au)

Lyle Thorne. CEO

[lt@diabloresources.com.au](mailto:lt@diabloresources.com.au)

**ASX:DBO OTCQB: DBORF**

**Office:**

Level 2, Suite 9

389 Oxford Street, Mount

Hawthorn WA 6005

+618 6383 7837



**DIABLORESOURCES.COM.AU**

## References

1. <https://www.usgs.gov/news/science-snippet/department-interior-releases-draft-2025-list-critical-3-minerals>
2. <https://discoveryalert.com.au/news/us-critical-minerals-fund-initiative-2025/>
3. <https://www.hornsilvermines.com/>
4. Oct 1, 2025- DIABLO COMPLETES \$2M CAPITAL RAISE TO FAST-TRACK U.S. CRITICAL MINERALS GROWTH WITH STAR RANGE HIGH-GRADE SILVER-ANTIMONY PROJECT, UTAH . ASX Announcement, Diablo Resources Ltd
5. <https://www.lme.com/en/Metals/Non-ferrous/LME-Copper#Overview>
6. <https://lisbonmine.com/>
7. Feb 19, 2025 - NEW HIGH-GRADE NEAR-MINE COPPER PROJECT, ASX Announcement, Diablo Resources Ltd
8. Mar 17, 2025 - MULTIPLE PRIORITY TARGETS IDENTIFIED AT PHOENIX COPPER PROJECT, ASX Announcement , Diablo Resources Ltd
9. Mar 25 – EXCELLENT COPPER RESULTS, ASX Announcement, Diablo Resources Ltd
10. May 19, 2025 – HIGH PRIORITY TARGETS IDENTIFIED, ASX Announcement, Diablo Resources Ltd
11. June 3, 2025 - HIGH PRIORITY ROCK SAMPLES DEFINE DRILL TARGETS, ASX Announcement (Updated), Diablo Resources Ltd
12. <https://www.bhp.com/news/bhp-insights/2024/09/how-copper-will-shape-our-future>
13. <https://www.devere-group.com/copper-price-forecast-2026-analysts-issue-bullish-outlook-amid-supply-shortage>
14. <https://goldsilver.com/industry-news/article/silver-price-forecast-predictions/>
15. <https://discoveryalert.com.au/news/antimony-market-surge-2025-obscurity-critical-metal/>
16. Oct 27, 2025 - FIRST PASS SCOUT DRILLING RETURNS 10.5m @ 1.02% COPPER AT PHOENIX. ASX Announcement, Diablo Resources Ltd
17. <https://advancemetals.com.au/high-grade-silver-drill-results-asx-advance-metals-updates/>
18. <https://api.investi.com.au/api/announcements/ss1/a2282d3f-efc.pdf>
19. <https://www.silvermines.com.au/projects/bowdens-silver-project/>
20. <https://investres.com.au/paris-silver-project>
21. <https://mithrilsilvergold.com/project/copalquin-district/resource-exploration>
22. <https://boabmetals.com/sorby-hills/>
23. <https://www.andeansilver.com/cerro-bayo-project/>
24. Dec 9, 2025 - HIGH GRADE SILVER & ANTIMONY RESULTS CONFIRMED AT STAR RANGE CRITICAL MINERALS PROJECT – STRONG MOMENTUM TOWARD FIRST DRILLING. ASX Announcement, Diablo Resources Ltd
25. Jan 14, 2026- HIGH GRADE RESULTS CONFIRM MULTIPLE SILVER-ANTIMONY-COPPER SYSTEMS AT STAR RANGE AX Announcement, Diablo Resources
26. Dec 17, 2025- COPPER DRILLING COMPLETED, HIGH-GRADE SILVER-ANTIMONY TARGETS (UTAH, USA). ASX Announcement, Diablo Resources Ltd
27. Jan 28. 2026. DRILLING TARGETS IDENTIFIED AT STAR RANGE SILVER-ANTIMONY PROJECT . ASX Announcement, Diablo Resources Ltd

# APPENDICES

## Previous ASX Announcements



### Phoenix Copper Project

Feb 19, 2025 - NEW HIGH-GRADE NEAR-MINE COPPER PROJECT, ASX Announcement, Diablo Resources Ltd  
Mar 17, 2025 - MULTIPLE PRIORITY TARGETS IDENTIFIED AT PHOENIX COPPER PROJECT, ASX Announcement, Diablo Resources Ltd  
Mar 25 – EXCELLENT COPPER RESULTS, ASX Announcement, Diablo Resources Ltd  
May 19, 2025 – HIGH PRIORITY TARGETS IDENTIFIED, ASX Announcement, Diablo Resources Ltd  
June 3, 2025 - HIGH PRIORITY ROCK SAMPLES DEFINE DRILL TARGETS, ASX Announcement (Updated), Diablo Resources Ltd  
June 10, 2025- Drill Permits Approved- Philadelphia & Trenton Prospects, ASX Announcement, Diablo Resources Ltd  
June 23, 2025 - DRILLING FOR COPPER UTAH, USA, ASX Announcement, Diablo Resources Ltd  
Aug 15, 2025 - DRILLING TO COMMENCE PHOENIX COPPER PROJECT, ASX Announcement, Diablo Resources Ltd  
Aug 21, 2025- EXPLORATION PROGRESS AT PHOENIX COPPER PROJECT, UTAH ASX Announcement, Diablo Resources Ltd  
Sep 1, 2025- ADDITIONAL GROUND TARGETING USA CRITICAL MINERALS. ASX Announcement, Diablo Resources Ltd  
Sep 9, 2025- FOCUS ON USA CRITICAL MINERALS INCREASED WITH COPPER DRILLING APPROVAL. ASX Announcement, Diablo Resources Ltd  
Sep 23, 2025- DIABLO COMPLETES DRILLING AT PHOENIX COPPER PROJECT, UTAH AND ADVANCES EXPANSION. ASX Announcement, Diablo Resources Ltd  
Oct 27, 2025 - FIRST PASS SCOUT DRILLING RETURNS 10.5m @ 1.02% COPPER AT PHOENIX. ASX Announcement, Diablo Resources Ltd  
Nov 21, 2025 - DRILLING COMMENCES AT HIGH-PRIORITY FAIR DINKUM COPPER PROSPECT AS U.S ELEVATES COPPER TO CRITICAL MINERALS STATUS. ASX Announcement, Diablo Resources Ltd  
Dec 17, 2025- COPPER DRILLING COMPLETED, HIGH-GRADE SILVER-ANTIMONY TARGETS (UTAH, USA). ASX Announcement, Diablo Resources Ltd

### Star Range Project

Oct 1, 2025- DIABLO COMPLETES \$2M CAPITAL RAISE TO FAST-TRACK U.S. CRITICAL MINERALS GROWTH WITH STAR RANGE HIGH-GRADE SILVER-ANTIMONY PROJECT, UTAH . ASX Announcement, Diablo Resources Ltd  
Nov 5, 2025- EXPLORATION COMMENCES AT STAR RANGE TARGETING HIGH-GRADE SILVER-ANTIMONY ZONES. ASX Announcement, Diablo Resources Ltd  
Nov 26, 2025- ADDITIONAL GROUND SECURED AT STAR RANGE SILVER ANTIMONY PROJECT ASX Announcement, Diablo Resources Ltd  
Dec 1, 2025. DRONE SURVEY COMPLETED AT STAR RANGE SILVER ANTIMONY PROJECT. ASX Announcement, Diablo Resources Ltd  
Dec 9, 2025 - HIGH GRADE SILVER & ANTIMONY RESULTS CONFIRMED AT STAR RANGE CRITICAL MINERALS PROJECT – STRONG MOMENTUM TOWARD FIRST DRILLING. ASX Announcement, Diablo Resources Ltd  
Jan 14, 2026- HIGH GRADE RESULTS CONFIRM MULTIPLE SILVER-ANTIMONY-COPPER SYSTEMS AT STAR RANGE AX Announcement, Diablo Resources  
Jan 28. 2026. DRILLING TARGETS IDENTIFIED AT STAR RANGE SILVER-ANTIMONY PROJECT . ASX Announcement, Diablo Resources Ltd