

Telfer South Drilling Approvals Awarded

- Drilling Approvals received for the 100% Rincon owned Hasties Main and Hasties SE gold/copper deposits located 10km south of the Telfer gold/copper mine.
- Rincon now plans to mobilise a drill rig back to site later in the quarter to further expand on the gold mineralisation at the Hasties Main and Hasties SE deposits and increase the MRE.
- Several anomalies identified by Newmont and Newcrest during the 1980' and 1990's have now been identified and will be verified on ground when site activity resumes in the coming weeks.
- Having finalised the Farm-In and Joint Venture¹ agreement (December 2025) with Greatland Resources (ASX:GGP, AIM:GGP) ("Greatland") on 200.8km² of exploration tenements, Rincon can now concentrate its efforts on the Hasties project that hosts the Hasties Main and Hasties SE gold/copper deposits.
- Revised Mineral Resources Estimate still on target for end of Q1.

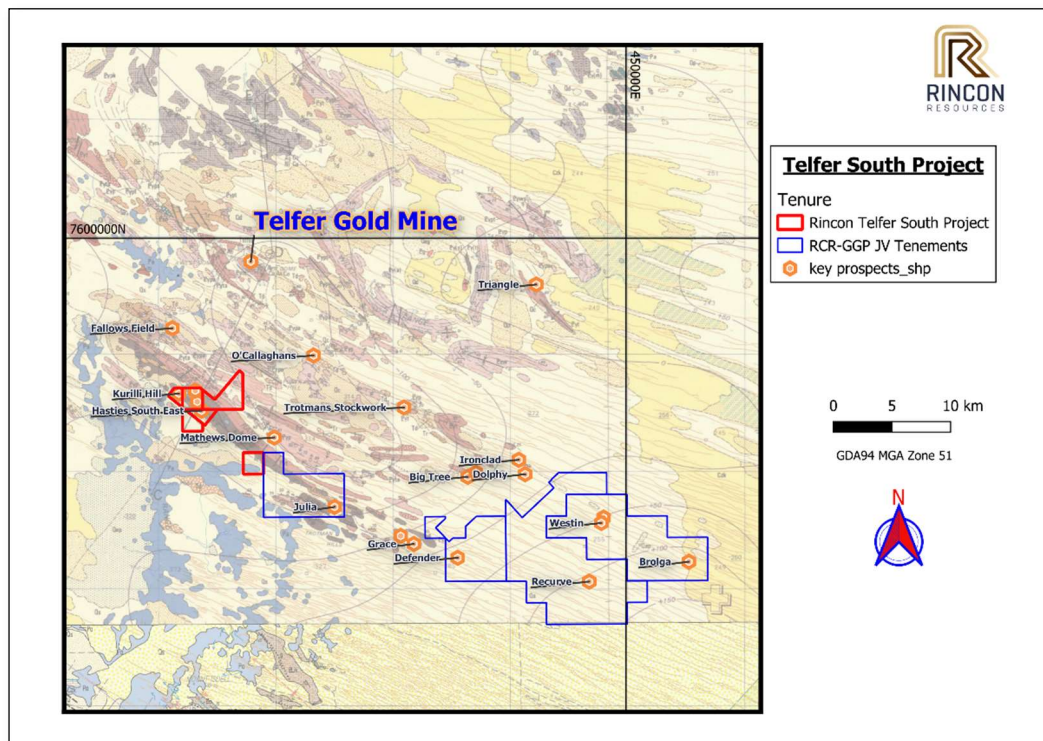


Figure 1 – Telfer South Project Hasties Prospect Location

¹ Refer to Rincon Resources Limited's . Farm-In & Joint Venture with Greatland Resources on Telfer South Tenements dated 18th December 2025

Rincon Resources Limited (ASX: RCR) (“**Rincon**” or “**Company**”) is pleased to advise that all permits have been approved for the next drill program at its wholly owned Telfer South - Hasties Project that hosts the Hasties Main and Hasties South-East gold-copper deposits situated 10km south of the Telfer Gold-Copper Mine in Western Australia’s Eastern Pilbara region. (Figure 1)

Following the finalising of farm-in and joint-venture with Greatland Resources (ASX:GGP), Rincon’s Telfer South Project – Hasties prospects now comprises two exploration licences and two prospecting licences. Together these licences cover approximately 15 km² with several parallel structures across geology known to host significant gold and copper mineralisation.

The programme’s goal is to further increase the resources at Hasties Main and Hasties South-East while also investigating historic target areas identified by Newmont and Newcrest during the 1980’ and 1990’s that have yet to receive modern exploration focus.

Rincon plans to upgrade its February 2025 Mineral Resource Estimate (MRE), which currently stands at 870,000 t grading 0.96 g/t Au and 0.26 % Cu (roughly 26,800 oz Au and 2,286 t Cu)², using drilling completed in Q4 2025 (Annexure A). This work extended near-surface mineralisation by about 150 m along strike and down-dip into the transition zone, confirming that the deposit remains open at depth.

Rincon has once again engaged Widenbar and Associates to revise the MRE, targeting publication of the updated estimate by the end of this quarter.

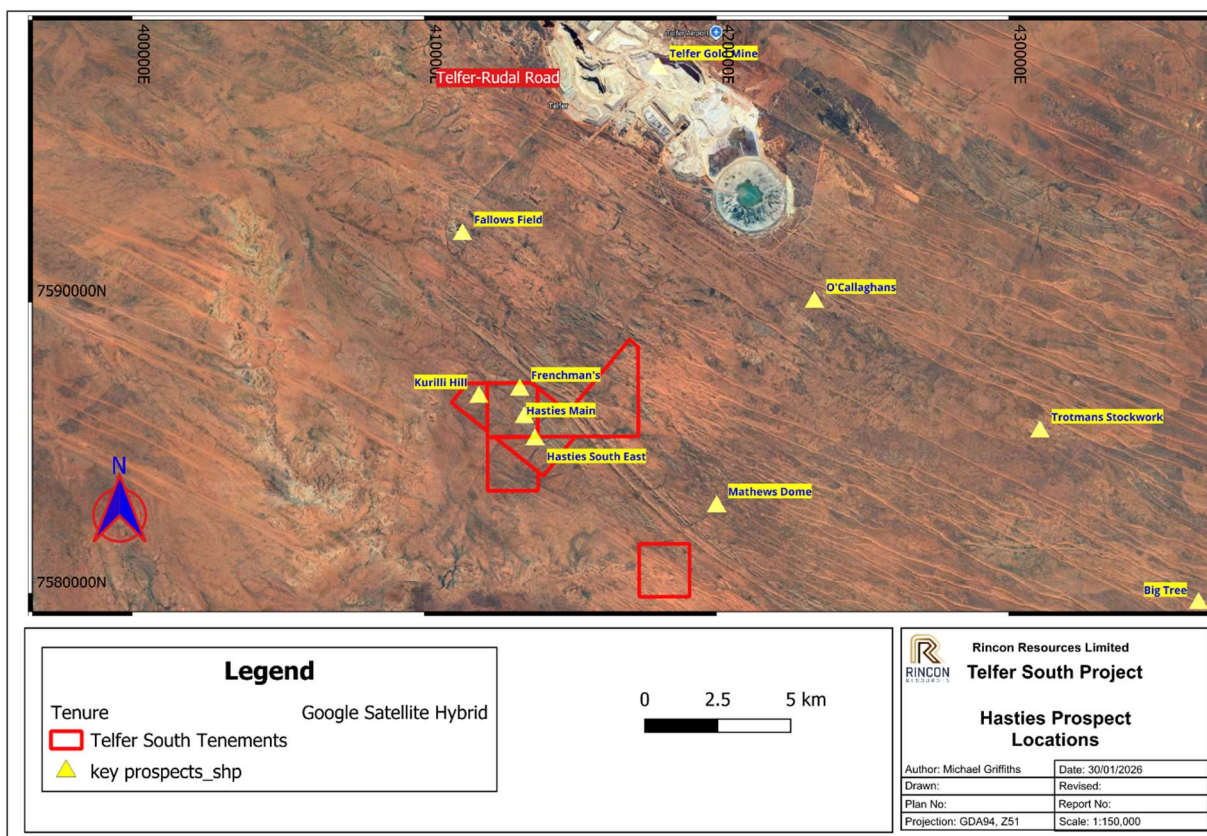


Figure 2 –Telfer South Project Hasties prospect Locations

² Refer to Rincon Resources Limited’s announcement Maiden Gold Resource Update – Telfer South dated 10 February 2025

Authorised by the Board of Rincon Resources Limited.

For more information visit www.rinconresources.com.au or contact:

Company:

Office: Tel: +61 (8) 6555 2950

Michael Griffiths - Director

Email: mike.griffiths@rinconresources.com.au

David Lenigas - Chairman

Email: davidlenigas@gmail.com

About Rincon:

Rincon has 100% interest in four exploration assets in Western Australia that are highly prospective for copper and gold. These are the South Telfer Project, Crackerbox Gold Project (Murchison Gold Field), West Arunta Project and the Laverton Project.

Each asset has previously been subject to historical exploration which has identified prospective mineral systems that warrant further exploration. The Company's aim is to create value for its shareholders by advancing its assets through the application of technically sound, methodical, and systematic exploration programs to test, discover, and delineate economic resources for mining.



Competent Person Statements

Mr Michael Griffiths

The information in this report that relates to Exploration Results is based on information compiled by Mr Michael Griffiths a Competent Person who is a Fellow of the Australasian Institute of Mining and Metallurgy. Mr. Griffiths is a Director of the Company. Mr. Griffiths has sufficient experience that is relevant to the style of mineralisation and type of deposit under consideration and to the activity being undertaken to qualify as a Competent Person as defined in the 2012 Edition of the "Australasian Code for Reporting of Exploration Results, Mineral Resources and Ore Reserves". Mr. Griffiths consents to the inclusion in this report of the matters based on his information in the form and context in which it appears.

The Company confirms that it is not aware of any new information or data that materially affects the information included in the original market announcements in relation to the Exploration Results. The Company confirms that the form and context in which the competent persons findings are presented have not been materially modified from the original announcements.

With respect to estimates of Mineral Resources, announced on 25 February 2025 (MRE Announcement), the Company confirms that the Exploration Results in this announcement is expected to form part of a revision to the current MRE, however all relevant information and data required to revise the MRE is not yet available. Other than the potential impact of the above, the Company confirms that it is not aware of any new information or data in a form able assess that materially effects the information in the MRE Announcement and that all material assumptions and technical parameters underpinning the estimates continue to apply and have not materially changed.

Forward-Looking Statements

This announcement may contain certain forward-looking statements and opinions. Forward-looking statements, including projections, forecasts and estimates, are provided as a general guide only and should not be relied on as an indication or guarantee of future performance and involve known and unknown risks, uncertainties, assumptions, contingencies and other important factors, many of which are outside the control of the Company and which are subject to change without notice and could cause the actual results, performance or achievements of the Company to be materially different from the future results, performance or achievements expressed or implied by such statements. Past performance is not necessarily a guide to future performance, and no representation or warranty is made as to the likelihood of achievement or reasonableness of any forward-looking statements or other forecast. Nothing contained in this announcement, nor any information made available to you is, or and shall be relied upon as, a promise, representation, warranty or guarantee as to the past, present or the future performance of Rincon.

Annexure A – Mineral Resource Estimate

Table 1: Hasties Gold-Copper Mineral Resource 0.3 g/t Au Cutoff

Hasties Main Zone and Hasties Southeast					
AuCut >=0.3					
Class	Tonnes	Au (g/t)	Cu (%)	Au (oz)	Cu (t)
Indicated	633,000	1.03	0.28	21,100	1,733
Inferred	237,000	0.75	0.23	5,700	553
Total	870,000	0.96	0.26	26,800	2,286

Table 2 Hasties Gold-Copper Resource 0.5 g/t Au Cutoff

Hasties Main Zone and Hasties Southeast					
AuCut >=0.5					
Class	Tonnes	Au (g/t)	Cu (%)	Au (oz)	Cu (t)
Indicated	567,000	1.11	0.28	20,100	1,557
Inferred	187,000	0.84	0.24	5,000	459
Total	754,000	1.04	0.27	25,200	2,016

Table 3 Hasties Gold-Copper Resource 1.0 g/t Au Cutoff

Hasties Main Zone and Hasties Southeast					
AuCut >=1.0					
Class	Tonnes	Au (g/t)	Cu (%)	Au (oz)	Cu (t)
Indicated	195,000	1.92	0.27	12,000	515
Inferred	40,000	1.59	0.35	2,000	139
Total	235,000	1.86	0.28	14,100	654