
Quarterly Activities Report – December 31st, 2025

Leonora Gold Projects (Christmas Well & Panhandle)

- **A number of the Christmas Well tenements granted**, delivering full control over multiple high-priority target areas.
- **Executed a Land Access Agreement with the Darlot Traditional Owner group**, enabling exploration activities across the Christmas Well and Panhandle project areas.
- **Compiled historical datasets** and completed detailed technical planning for district-scale exploration programs across the Leonora project portfolio.
- **Completed detailed aeromagnetic survey at Christmas Well**, providing a modern geophysical framework for drill targeting.
- **Finalised near-term Leonora exploration programs**, including planning of first-pass drilling of priority targets across both projects.
- **Initiated heritage survey planning** to support upcoming drilling at Christmas Well and Panhandle.

Webb Project

- **Continued systematic evaluation of drill core**, including technical reassessment, geochemical sampling and geochronological analysis, with results pending.

Broadhurst Project

- **Progressed statutory and compliance approvals** to support the grant of new tenure
- **Commenced historical data compilation**

Corporate & Financial

- **Maintained a strong cash position of approximately A\$2.9 million**, providing funding certainty for planned exploration programs and near-term drilling.

During the December Quarter, CGN Resources Ltd (ASX: CGR) (“CGN Resources” or “the Company”) continued to focus on project development across its high-quality asset portfolio in Western Australia. Work programs were completed across all project areas advancing each project toward the next phase of evaluation and drilling.

ASX ANNOUNCEMENT

30th January 2026

CGN Resources progressed its **core gold projects** at **Christmas Well and Panhandle** in the Leonora district. Statutory and compliance activities continued during the Quarter, paving the way for the granting of new tenure, with the Company receiving notification of the first granted tenement at Christmas Well. In addition, key achievements during the Quarter included:

- Execution of an Aboriginal Land Access Agreement covering the majority of the tenement package, enabling commencement of on-ground exploration activities.
- Acquisition of additional highly prospective tenements, further strengthening the Company's strategic land position.
- Consolidation and digitisation of historical exploration datasets to support systematic target generation and geological interpretation.
- Completion of a detailed airborne aeromagnetic survey at Christmas Well, providing high-resolution geophysical data to support drill targeting.

At the **Webb Project**, activities focused on finalising the 2025 diamond drilling program, including technical reassessment of drill core, sampling and data collation to support geochemical and geochronological analysis.

At the recently pegged **Broadhurst Project**, the Company undertook historical data acquisition, geophysical modelling, preliminary geological targeting studies and initial stakeholder engagement to support future exploration activities.

A major development during the Quarter was the acquisition and grant of new tenure at Leonora, which significantly expands CGN Resources' landholding in this highly endowed gold province. These new tenements are strategically located between two major multi-million-ounce gold deposits and cover the same highly prospective stratigraphy and structural corridors known to host significant gold mineralisation.

Webb Project

Processing of drill core from the 2025 drilling program (Figure 1), which was completed in the previous Quarter, continued during the period. This work included technical assessment, geochronological analysis and geochemical sampling, with analytical results still pending. Collectively, this work is providing a more accurate understanding of the project's geology and is expected to materially improve drill targeting for future exploration programs.

Prior to drilling, geological interpretations were based largely on geophysical data; however, the addition of hard geological information from drilling has significantly improved understanding of the project's structural framework and geological architecture. Several highly prospective targets remain, particularly at the Elmar prospect (E1–E3, Figure 1), which coincide with regionally significant gravity anomalies and favourable structural settings for the emplacement of large mineral systems.

Once all new data is fully validated, it will be integrated into the geological and geophysical models to refine targeting and prioritise drill holes for the 2026 program. This positions Webb to be systematically tested for its copper, gold, and critical metal potential in the coming year.

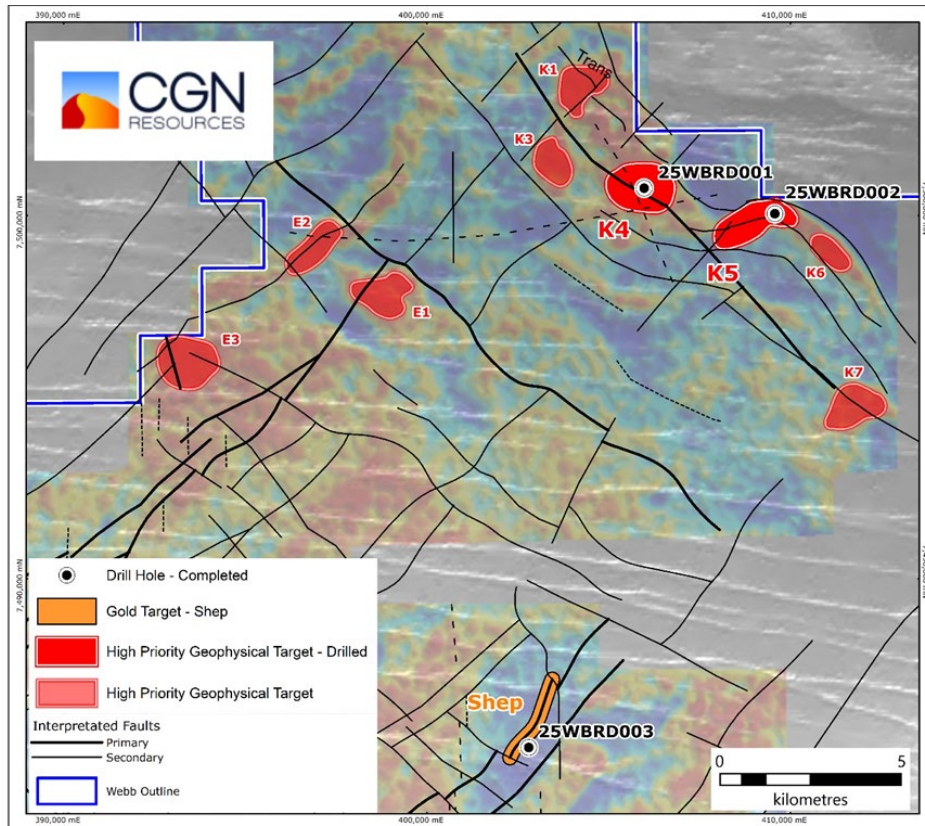


Figure 1. Drill hole location plan showing main structural trends over Falcon gravity data

Leonora Gold Projects – Christmas Well and Panhandle

CGN Resources holds a growing, district-scale land position in the highly endowed Leonora gold district of Western Australia. The Company’s Christmas Well and Panhandle projects are strategically located along the same regional structural corridors that host several Tier-1 gold systems, including Gwalia (>8 Moz), King of the Hills (>4 Moz), Ulysses (~2 Moz), Admiral and Orient Well. Together, these projects provide CGN with extensive strike coverage across the Gwalia–Ulysses mineralised corridor, one of the most productive gold trends in the Eastern Goldfields.

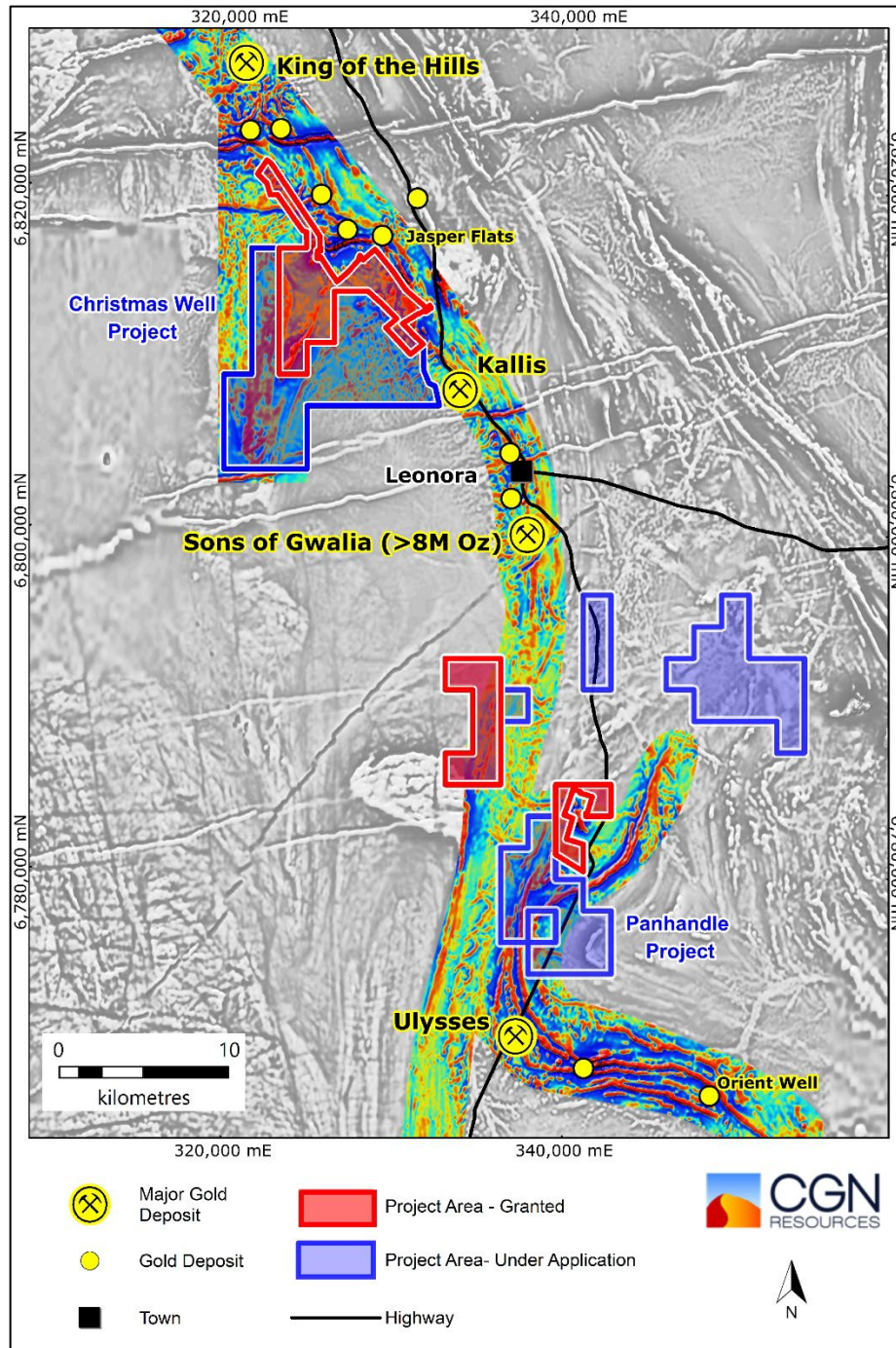


Figure 2 . Location of Leonora gold projects over GSWA 1VD greyscale magnetic image. Red areas are granted tenure and blue areas are applications.

Christmas Well Project

The Christmas Well Project, located approximately **12 km north of Leonora** in Western Australia, lies within the highly mineralised **Gwalia Shear Zone**, a major gold-bearing structural corridor that hosts several Tier-1 deposits, including the **>8 Moz Sons of Gwalia Mine** (14 km to the south) and the **>4 Moz Tarmoola deposit** (8 km to the north) (Figure 2).

Following recent tenure additions, the Project now comprises **two Exploration Licences and seventeen Prospecting Licences**, with almost half of these granted during the Quarter (Appendix 1).

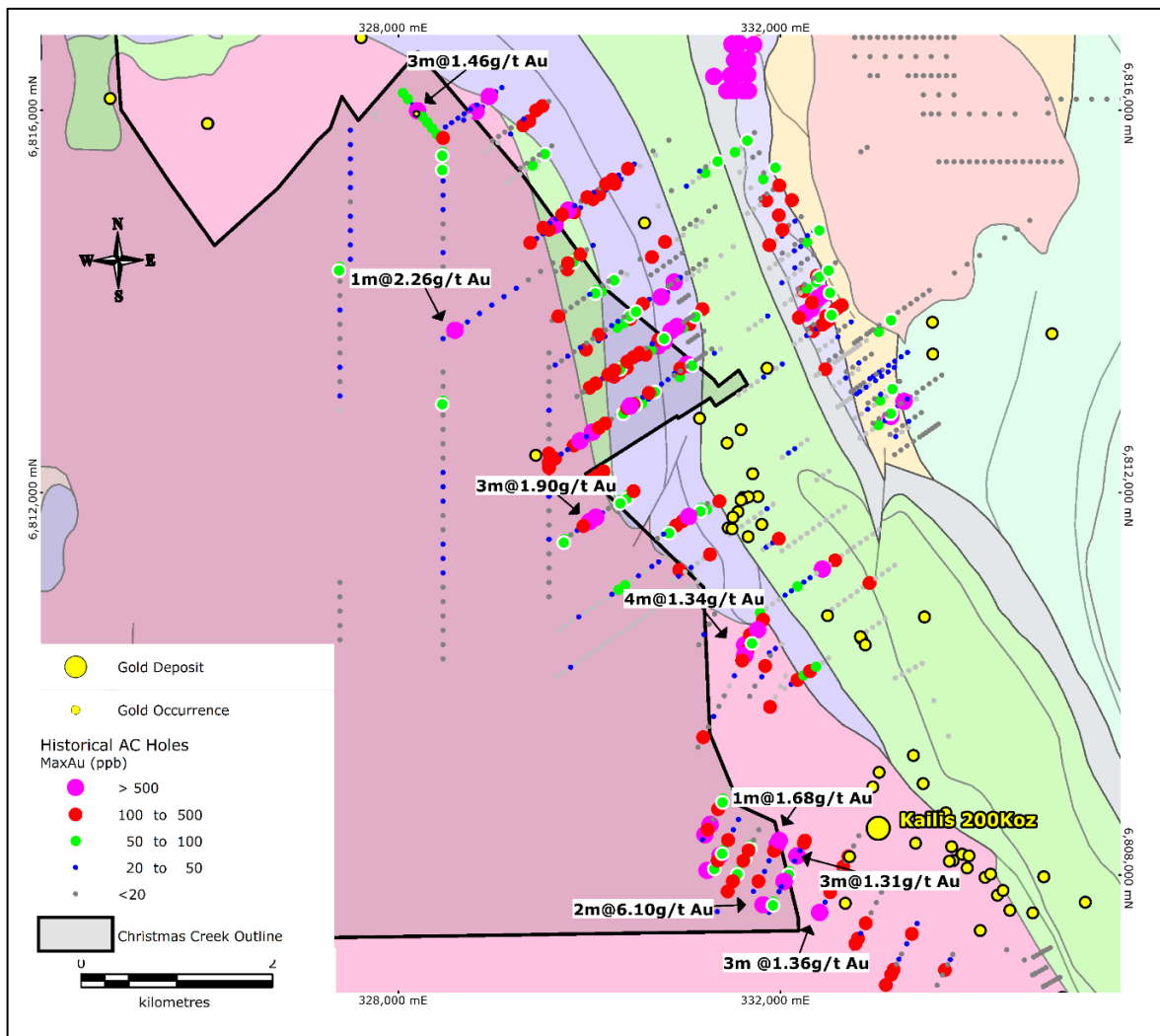


Figure 3. Compilation of maximum gold value in WAMEX drill database over key areas of Christmas Well project over the 1:100,000 interpreted bedrock geology.

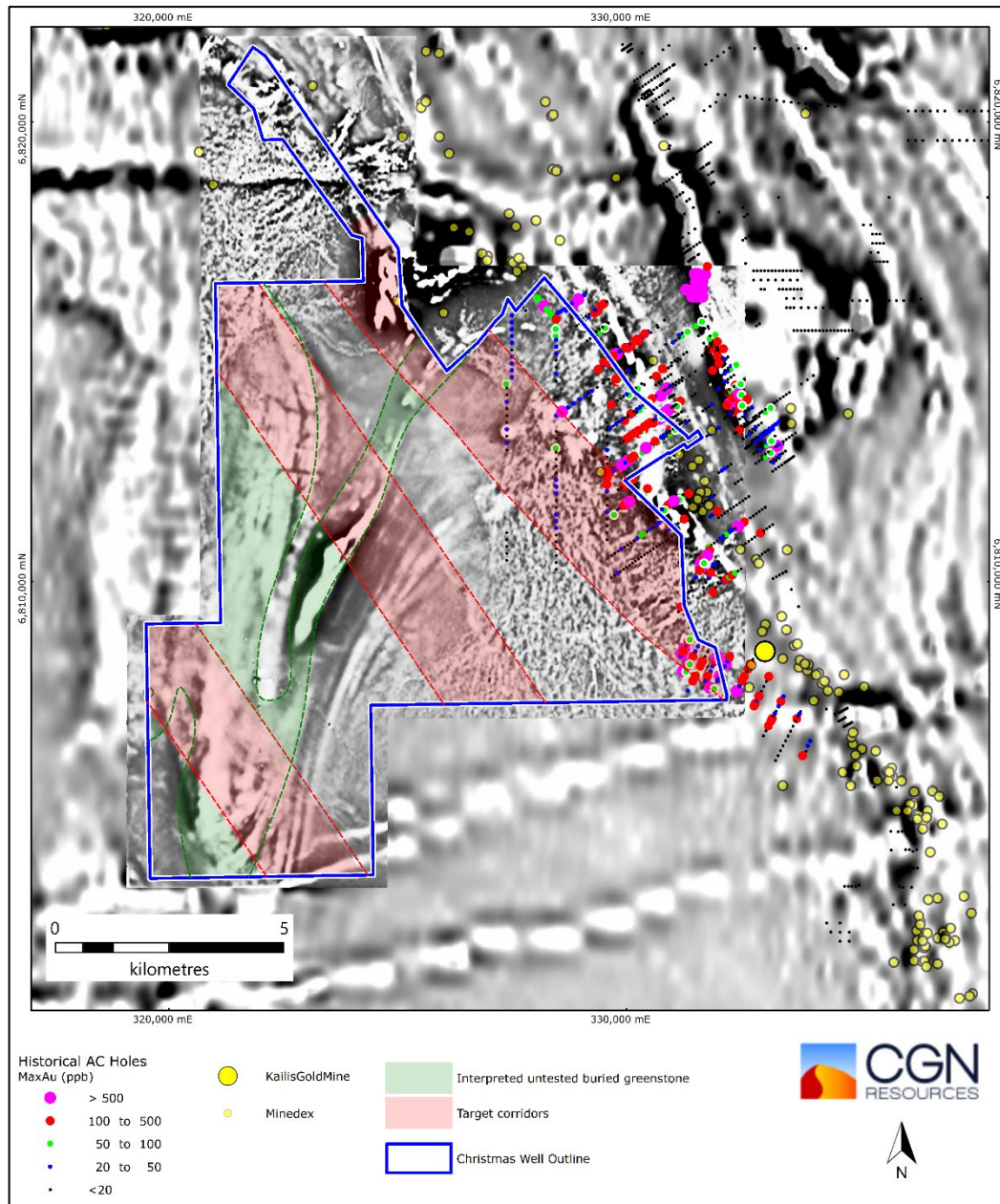


Figure 4. Christmas Well key target areas over regional magnetics

A key gold-bearing feature within the Project is the **contact between the Raeside Batholith and the Norseman–Wiluna Greenstone Belt**, which transects the Company’s tenure. This major litho-structural corridor hosts several significant gold systems, including **Gwalia, King of the Hills, Harbour Lights and Tower Hill**. The contact is both mapped and drill-confirmed within CGN

ASX ANNOUNCEMENT

30th January 2026

Resources' tenure, **with multiple intercepts exceeding 1 g/t Au** recorded from historical drilling (Figure 3; refer ASX Announcement 18 March 2025), many of which remain poorly tested by follow-up programs. Recently granted tenure at Christmas Well covers this highly prospective corridor as well as several newly defined, high-priority exploration targets.

Key achievements achieved during the Quarter:

- Grant of Exploration Licence E37/1579 and Prospecting Licences P37/9857–9867
- Execution of a Land Access Agreement with the Darlot Traditional Owner group
- Execution of a Land Access Agreement with Genesis Minerals
- Completed detailed aeromagnetic survey, final data processing to be completed as at end of quarter

The Company has also identified a series of high-priority target trends (Figure 4) that include:

- Conceptual litho-structural targets along the sheared batholith–greenstone contact
- Untested greenstone stratigraphy within the western tenements
- Anomalous zones defined by multi-metre, multi-gram gold intercepts with limited historical follow-up
- Shear-related mineralisation within granitic units.

Panhandle Project

The Panhandle Project is located approximately **25 km south of Leonora** along the Goldfields Highway and occupies a highly strategic position directly between two major gold operations — **Genesis Minerals' Gwalia Mine (~8 Moz)** to the north and the **Ulysses mining hub (~2 Moz)** to the south.

During the Quarter, CGN Resources applied for additional tenure at the Panhandle Project following the identification of further highly prospective areas, materially increasing the scale of the Project. The Project now comprises **two granted Exploration Licences** (E37/1567 and E40/454) and **four Exploration Licence applications** (E37/1587, E37/1611, E37/1612 and E40/472), covering a combined area of approximately **145 km²**.

The Panhandle tenure overlies multiple mineralised trends known to host significant gold deposits. **Gwalia Mine stratigraphy** can be traced southwards into the eastern portion of the Project, while **Ulysses stratigraphy** folds into the western areas. In addition, the newly acquired eastern tenure extends the **Raeside structural corridor and stratigraphy** into CGN Resources' ground. These geological and structural linkages demonstrate strong continuity with several Tier-1 gold systems in the Leonora district.

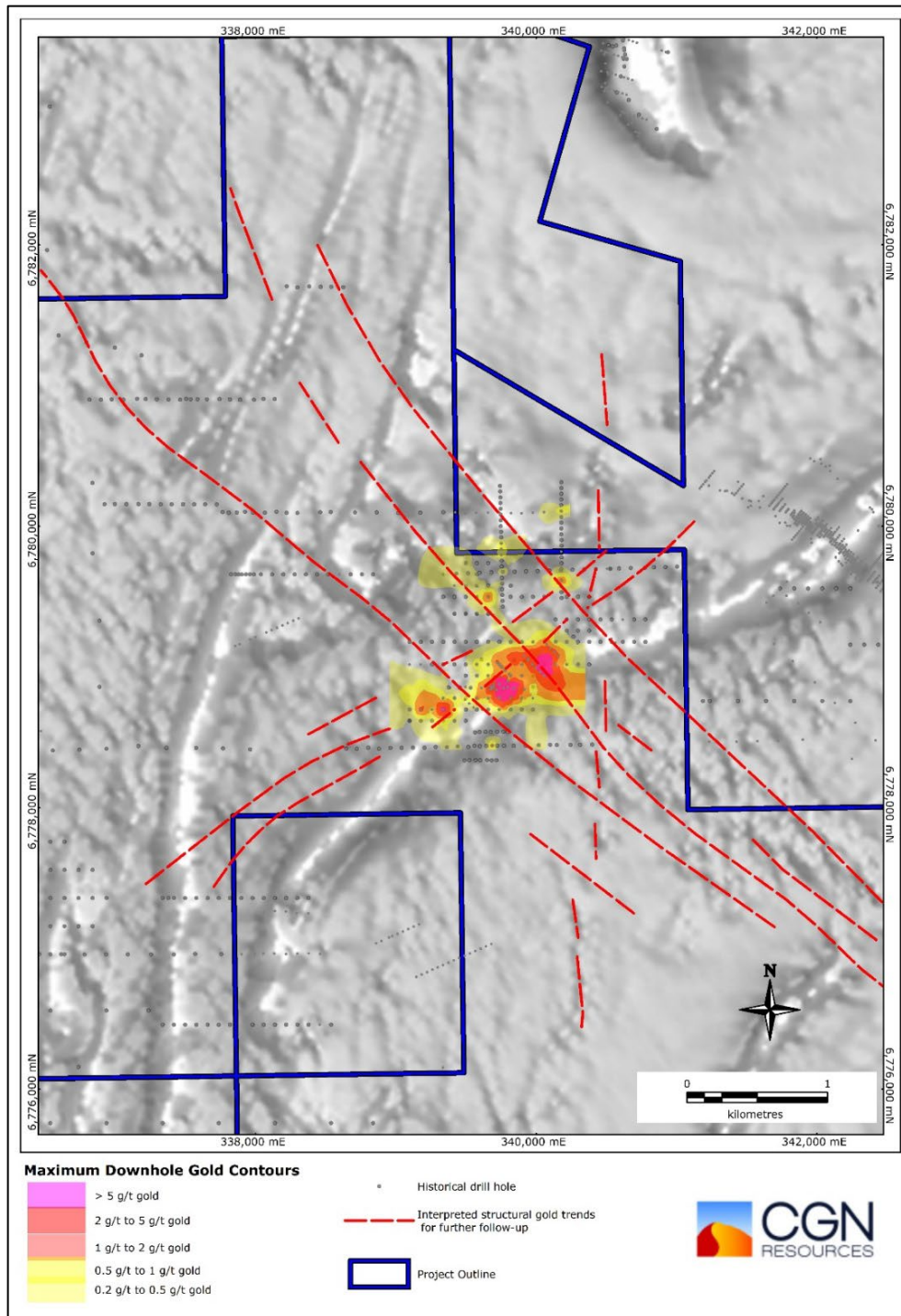


Figure 5. Pelican Prospect over regional 1VD magnetic image with key structural and geology trends (source. CGN Announcement 30/10/25).

ASX ANNOUNCEMENT

30th January 2026

Historical exploration has already intersected numerous gold-mineralised zones, particularly at the **Pelican Prospect** (Figure 5). Compiled historical drilling results from GSWA WAMEX reports include:

HWA37:	9 m @ 20.20 g/t Au from 61 m
HWA37:	4 m @ 1.17 g/t Au from 72 m
HWA38:	4 m @ 1.74 g/t Au from 51 m
HWA38:	5 m @ 2.20 g/t Au from 56 m
HWRC009:	5 m @ 1.58 g/t Au from 50 m
HWA124:	4 m @ 6.18 g/t Au from 45 m

(All intercepts >0.5 g/t Au, no internal dilution; refer ASX Announcement dated 10 October 2025).

While historical exploration has largely focused on areas of exposed or shallow target stratigraphy, **significant portions of the Project remain underexplored**, particularly where favourable geology is concealed beneath transported cover. These areas represent **highly prospective, drill-ready targets** with potential to deliver new high-grade discoveries.

With a **district-scale landholding, proximity to Tier-1 gold systems, strong historical intercepts**, and extensive underexplored strike length, the Panhandle Project provides a compelling platform for systematic exploration and follow-up drilling within one of Western Australia's most productive gold provinces.

Broadhurst Project

The Broadhurst Project represents a highly prospective **new copper exploration opportunity** in the northern Pilbara, within the **world-class Paterson Province**. The Company has applied for **two exploration licences**, E45/7128 and E45/7129, covering a combined area 543 km² of strategically located ground (Figure 6). The tenure overlies significant portions of the **Broadhurst Formation**, a highly mineralised sedimentary unit that hosts several major copper deposits including **Nifty, Maroochydore, and Yeneena B1**, as well as numerous advanced exploration prospects.

During the December Quarter, CGN Resources compiled multiple generations of geophysical datasets and **commenced detailed modelling**, integrating aeromagnetic, gravity and electromagnetic data. The Company is also **compiling historical exploration** data from the DEMIRS WAMEX database, which will be combined with the geophysical datasets to **complete a regional-scale geological interpretation**.

Work completed to date has been encouraging, with several compelling structural and geophysical features considered prospective for base-metal mineralisation already identified. Previous exploration by Encounter Resources and IGO has also reported base-metal intersections within the Project area, further supporting its prospectivity.

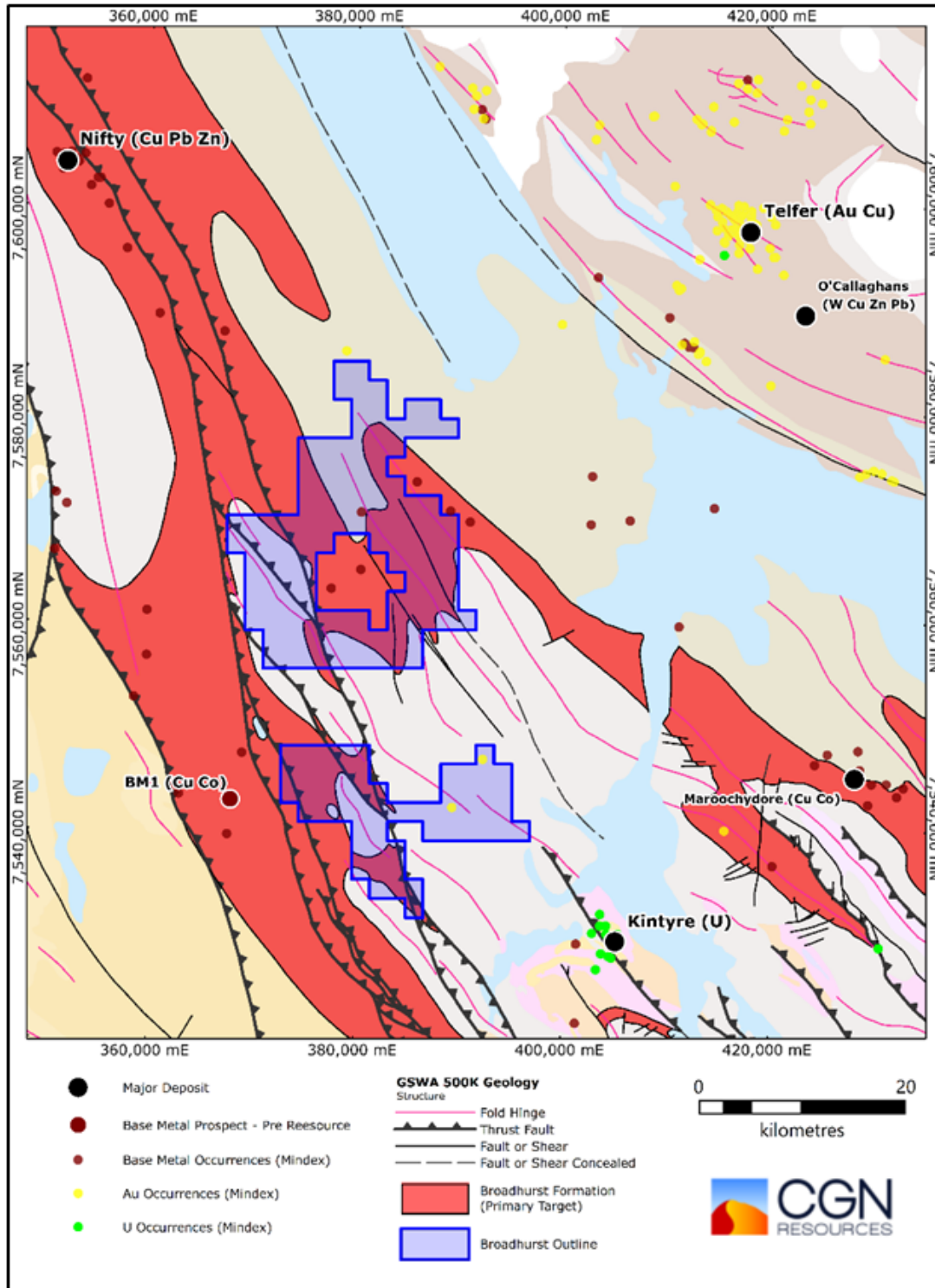


Figure 6 Broadhurst Project tenure Location plan

ASX ANNOUNCEMENT

30th January 2026

With tenure applications covering a large, underexplored but highly prospective land package, the Broadhurst Project provides a strong platform for systematic copper exploration. The Company is progressing statutory and compliance requirements to support the granting of the licences, positioning the Project for targeted exploration programs aimed at unlocking its copper potential.

Corporate Activities for the Period

- Added new tenure at Christmas Well and Panhandle Projects
- Stakeholder negotiations for Broadhurst Projects,
- Executed access agreements with Genesis and Murrin Murrin related to miscellaneous licences at Leonora
- Executed a Land access agreement with Darlot group covering all current tenure

Activities for the Current Period

For the 3 months ending 31st March 2026, the Company will undertake the following activities:

- Collate final geochemistry and dating data for the Webb Project
- Commence exploration planning for the Webb Project
- Heritage Survey for 2026 exploration programs
- Detailed design of exploration and evaluation programs for Leonora
- Complete geophysical modelling of Leonora project
- Finalise drill contracts for Leonora drilling programs
- Continued project review and targeting for the Broadhurst project
- Continue compliance requirements to get tenement applications granted
- Commence Heritage negotiations with Martu at the Broadhurst Project

December Quarter Cashflow (including note to Section 6 of Appendix 5B)

Attached below is the Appendix 5B company cash flow statement. During the quarter, the Company operating expenses amounted to approximately \$467k. Significant expenses for the quarter included data compilation, geological review, tenement costs, geophysical modelling, contractors for fieldwork, project planning, stakeholder engagement and marketing. Payments to related parties of the entity and their associates totalled \$113k which included Chairman fees, Managing Director salary, Non-executive director fees, rent and company secretarial costs.

ASX ANNOUNCEMENT

30th January 2026

ENDS

This announcement has been authorised by the Board of Directors of the Company.

For Further Information, Please Contact:

<p>Mr Stan Wholley Managing Director Tel: +61 (0) 421 109 664 info@cgnresources.com.au</p>	<p>Mr Grant Mooney Non-Executive Director / Company Secretary Tel: +61 8 9226 0085 info@cgnresources.com.au</p>
--	---

About the Webb Project

The Webb Project is in the Eastern Pilbara region of Western Australia approximately 20km east of the Kiwirrkurra aboriginal community. The Project comprises nine granted exploration licences (Appendix 1) in JV with Meteoric Resources. The tenements cover 961 sq km of the highly prospective West Arunta Orogen, a package of Proterozoic to Archean aged rocks considered highly prospective for large magmatic base metal, precious metal, and kimberlitic diamond deposits. The project has been the subject of exploration for diamonds resulting in the discovery of Australia's largest kimberlite field comprising at least 280 kimberlite pipes. During exploration for diamonds multiple holes returned highly anomalous base metal intersections for copper, nickel, and rare earth elements. Based on these results CGNR changed focus from diamonds exploration to base metal and critical metal exploration which will be the focus of work over the coming years.

About the Leonora Projects

The Company's exploration efforts are focused on two key areas surrounding the township of Leonora in Western Australia: The Panhandle Project and the Christmas Well Project. Both areas lie along strike from some of the region's most prominent gold deposits, including the Gwalia Mine, containing more than 8 million ounces of gold.

The Panhandle Project is located approximately seven kilometres south of the Gwalia Mine, the Panhandle Project covers two exploration licences in an area where the stratigraphy is interpreted to be similar to that of Gwalia but buried under cover.

The Christmas Well Project is situated 10 kilometres north of Leonora. The project is strategically located along strike from several significant gold mines. The tenements target the contact zone

ASX ANNOUNCEMENT

30th January 2026

between the Raeside Batholith and the Eastern Goldfields Superterrane, a geological feature that hosts multiple +1-million-ounce gold mines, including Gwalia, Tower Hill, and King of the Hills.

Both projects have experienced limited systematic exploration due to the depth of alluvial cover sediments that obscure the underlying bedrock. However, the area remains highly prospective, with the bedrock geology hidden beneath the cover offering substantial exploration potential. The Company aims to unlock this potential by continuing exploration efforts in these underexplored regions.

About the Broadhurst Project

Located in the Paterson Province of Western Australia the Broadhurst Project comprises two exploration licences covering 542 sq km. The tenure overlies large sections of the highly prospective Broadhurst Formation host to several high-grade sediment hosted copper deposits including Nifty, Maroochydore and Yeneena BM1. The tenure has seen limited systematic exploration but the work that has been done indicates several areas of the project are fertile, with copper, zinc and lead mineralisation intersected in drilling.

Forward-Looking Statements

This document may include forward-looking statements. Forward-looking statements include, but are not limited to, statements concerning CGN Resources Limited's planned exploration programme and other statements that are not historical facts. When used in this document, the words such as "could," "plan," "estimate," "expect," "intend," "may," "potential," "should," and similar expressions are forward-looking statements. Although CGN Resources Limited believes that its expectations reflected in these forward-looking statements are reasonable, such statements involve risks and uncertainties, and no assurance can be given that actual results will be consistent with these forward-looking statements.

Competent Person's Statement

The information in this announcement that relates to Exploration Results for the Webb Project is based on, and fairly represents, information compiled by Mr Daniel Wholley, a Competent Person who is a Member of the Australian Institute Geoscientists (AIG). Mr Wholley is a Director of CGN Resources Limited and holds securities in the Company. Mr Wholley has sufficient experience that is relevant to the style of mineralisation and type of deposit under consideration, and to the activity being undertaken to qualify as a Competent Person as defined in the 2012 Edition of the JORC Code. Mr Wholley consents to the inclusion in the report of the matters based on his information in the form and context in which it appears.

Appendix 5B

Mining exploration entity or oil and gas exploration entity quarterly cash flow report

Name of entity

CGN Resources Limited

ABN

51 122 958 810

Quarter ended ("current quarter")

31 December 2025

Consolidated statement of cash flows		Current quarter \$A'000	Year to date (6 months) \$A'000
1.	Cash flows from operating activities		
1.1	Receipts from customers		
1.2	Payments for		
	(a) exploration & evaluation (if expensed)	(305)	(939)
	(b) development		
	(c) production		
	(d) staff costs	(104)	(243)
	(e) administration and corporate costs	(73)	(78)
1.3	Dividends received (see note 3)		
1.4	Interest received	15	36
1.5	Interest and other costs of finance paid		
1.6	Income taxes paid		
1.7	Government grants and tax incentives	-	23
1.8	Other (provide details if material)		
1.9	Net cash from / (used in) operating activities	(467)	(1,201)

30th January 2026

Consolidated statement of cash flows	Current quarter \$A'000	Year to date (6 months) \$A'000
2. Cash flows from investing activities		
2.1 Payments to acquire:		
(a) entities		
(b) tenements		
(c) property, plant and equipment		
(d) exploration & evaluation (if capitalised)		
(e) investments		
(f) other non-current assets		
2.2 Proceeds from the disposal of:		
(a) entities		
(b) tenements		
(c) property, plant and equipment		
(d) investments		
(e) other non-current assets		
2.3 Cash flows from loans to other entities		
2.4 Dividends received (see note 3)		
2.5 Other (provide details if material)		
2.6 Net cash from / (used in) investing activities	-	-

3. Cash flows from financing activities		
3.1 Proceeds from issues of equity securities (excluding convertible debt securities)		
3.2 Proceeds from issue of convertible debt securities		
3.3 Proceeds from exercise of options		
3.4 Transaction costs related to issues of equity securities or convertible debt securities		
3.5 Proceeds from borrowings		
3.6 Repayment of borrowings		
3.7 Transaction costs related to loans and borrowings		

ASX ANNOUNCEMENT

30th January 2026



Consolidated statement of cash flows		Current quarter \$A'000	Year to date (6 months) \$A'000
3.8	Dividends paid		
3.9	Other (leases paid)	(8)	(16)
3.10	Net cash from / (used in) financing activities	(8)	(16)

30th January 2026

4.	Net increase / (decrease) in cash and cash equivalents for the period		
4.1	Cash and cash equivalents at beginning of period	3,382	4,125
4.2	Net cash from / (used in) operating activities (item 1.9 above)	(467)	(1,201)
4.3	Net cash from / (used in) investing activities (item 2.6 above)		
4.4	Net cash from / (used in) financing activities (item 3.10 above)	(8)	(16)
4.5	Effect of movement in exchange rates on cash held		
4.6	Cash and cash equivalents at end of period (See note 1 below)	2,907	2,907

5.	Reconciliation of cash and cash equivalents at the end of the quarter (as shown in the consolidated statement of cash flows) to the related items in the accounts	Current quarter \$A'000	Previous quarter \$A'000
5.1	Bank balances	195	53
5.2	Call deposits	2,712	3,329
5.3	Bank overdrafts		
5.4	Other (provide details)		
5.5	Cash and cash equivalents at end of quarter (should equal item 4.6 above)	2,907	3,382

6. Payments to related parties of the entity and their associates

- 6.1 Aggregate amount of payments to related parties and their associates included in item 1
- 6.2 Aggregate amount of payments to related parties and their associates included in item 2

**Current quarter
\$A'000**

113

Note: if any amounts are shown in items 6.1 or 6.2, your quarterly activity report must include a description of, and an explanation for, such payments

30th January 2026

7. Financing facilities	Total facility amount at quarter end \$A'000	Amount drawn at quarter end \$A'000
<i>Note: the term 'facility' includes all forms of financing arrangements available to the entity. Add notes as necessary for an understanding of the sources of finance available to the entity.</i>		
7.1 Loan facilities		
7.2 Credit standby arrangements		
7.3 Other (please specify)		
7.4 Total financing facilities		
7.5 Unused financing facilities available at quarter end		
7.6 Include in the box below a description of each facility above, including the lender, interest rate, maturity date and whether it is secured or unsecured. If any additional financing facilities have been entered into or are proposed to be entered into after quarter end, include a note providing details of those facilities as well.		

8. Estimated cash available for future operating activities	\$A'000
8.1 Net cash from / (used in) operating activities (Item 1.9)	(465)
8.2 Capitalised exploration & evaluation (Item 2.1(d))	
8.3 Total relevant outgoings (Item 8.1 + Item 8.2)	(465)
8.4 Cash and cash equivalents at quarter end (Item 4.6)	2,907
8.5 Unused finance facilities available at quarter end (Item 7.5)	
8.6 Total available funding (Item 8.4 + Item 8.5)	2,907
8.7 Estimated quarters of funding available (Item 8.6 divided by Item 8.3)	6.2 quarters

8.8 If Item 8.7 is less than 2 quarters, please provide answers to the following questions:

1. Does the entity expect that it will continue to have the current level of net operating cash flows for the time being and, if not, why not?

Answer:

2. Has the entity taken any steps, or does it propose to take any steps, to raise further cash to fund its operations and, if so, what are those steps and how likely does it believe that they will be successful?

Answer:

3. Does the entity expect to be able to continue its operations and to meet its business objectives and, if so, on what basis?

ASX ANNOUNCEMENT

30th January 2026



Answer:

Compliance statement

- 1 This statement has been prepared in accordance with accounting standards and policies which comply with Listing Rule 19.11A.
- 2 This statement gives a true and fair view of the matters disclosed.

Date: 30th January 2026

Authorised by: 

By the Board
(Name of body or officer authorising release – see note 4)

Notes

1. This quarterly cash flow report and the accompanying activity report provide a basis for informing the market about the entity's activities for the past quarter, how they have been financed and the effect this has had on its cash position. An entity that wishes to disclose additional information over and above the minimum required under the Listing Rules is encouraged to do so.
2. If this quarterly cash flow report has been prepared in accordance with Australian Accounting Standards, the definitions in, and provisions of, *AASB 6: Exploration for and Evaluation of Mineral Resources* and *AASB 107: Statement of Cash Flows* apply to this report. If this quarterly cash flow report has been prepared in accordance with other accounting standards agreed by ASX pursuant to Listing Rule 19.11A, the corresponding equivalent standards apply to this report.
3. Dividends received may be classified either as cash flows from operating activities or cash flows from investing activities, depending on the accounting policy of the entity.
4. If this report has been authorised for release to the market by your board of directors, you can insert here: "By the board". If it has been authorised for release to the market by a committee of your board of directors, you can insert here: "By the [name of board committee – eg Audit and Risk Committee]". If it has been authorised for release to the market by a disclosure committee, you can insert here: "By the Disclosure Committee".
5. If this report has been authorised for release to the market by your board of directors and you wish to hold yourself out as complying with recommendation 4.2 of the ASX Corporate Governance Council's Corporate Governance Principles and Recommendations, the board should have received a declaration from its CEO and CFO that, in their opinion, the financial records of the entity have been properly maintained, that this report complies with the appropriate accounting standards and gives a true and fair view of the cash flows of the entity, and that their opinion has been formed on the basis of a sound system of risk management and internal control which is operating effectively.

ASX Listing Rules Appendix 5B (01/12/19) See chapter 19 of the ASX Listing Rules for defined terms

ASX ANNOUNCEMENT

30th January 2026



Appendix 1 – Interests in Tenements

Tenement Id	Status	Project	Jurisdiction	Interest (Start of Qtr)	Interest (End of Qtr)	Area (km ²)
E80/4815	LIVE	WEBB	LAKE MACKAY	93%	93%	82
E80/5471	LIVE	WEBB	WANMAN	93%	93%	82
E80/5496	LIVE	WEBB	ELIZABETH HILLS	93%	93%	66
E80/5499	LIVE	WEBB	ELIZABETH HILLS	93%	93%	209
E80/5573	LIVE	WEBB	WANMAN	93%	93%	130
E80/5633	LIVE	WEBB	WEBB	93%	93%	221
E80/5864	LIVE	WEBB	WANMAN	93%	93%	114
E80/5956	LIVE	WEBB	WANMAN	93%	93%	44
E80/5986	LIVE	WEBB	WANMAN	93%	93%	13
P37/9857	LIVE	Christmas Well	LEONORA NORTH	100%	100%	2
P37/9858	LIVE	Christmas Well	LEONORA NORTH	100%	100%	2
P37/9859	LIVE	Christmas Well	LEONORA NORTH	100%	100%	1
P37/9860	LIVE	Christmas Well	LEONORA NORTH	100%	100%	1
P37/9861	LIVE	Christmas Well	LEONORA NORTH	100%	100%	2
P37/9862	LIVE	Christmas Well	LEONORA NORTH	100%	100%	1
P37/9863	LIVE	Christmas Well	LEONORA NORTH	100%	100%	2
P37/9864	LIVE	Christmas Well	LEONORA NORTH	100%	100%	2
P37/9865	LIVE	Christmas Well	LEONORA NORTH	100%	100%	2
P37/9866	LIVE	Christmas Well	LEONORA NORTH	100%	100%	1
P37/9867	LIVE	Christmas Well	LEONORA NORTH	100%	100%	2
P37/9924	PENDING	Christmas Well	MALCOLM	100%	100%	2
P37/9925	PENDING	Christmas Well	MALCOLM	100%	100%	2
P37/9926	PENDING	Christmas Well	MALCOLM	100%	100%	2
P37/9927	PENDING	Christmas Well	MALCOLM	100%	100%	2
P37/9928	PENDING	Christmas Well	MALCOLM	100%	100%	2
P37/9929	PENDING	Christmas Well	MALCOLM	100%	100%	2
E37/1598	PENDING	Christmas Well	MALCOLM	100%	100%	66
E37/1567	LIVE	Panhandle	MALCOLM	100%	100%	19
E40/0454	LIVE	Panhandle	MARMION	100%	100%	13
E37/1587	PENDING	Panhandle	MALCOLM	100%	100%	3
E37/1610	PENDING	Panhandle	MALCOLM	100%	100%	41
E37/1611	PENDING	Panhandle	MALCOLM	100%	100%	9
E40/0472	PENDING	Panhandle	MARMION	100%	100%	38
E40/0473	PENDING	Panhandle	MARMION	100%	100%	22
E45/7128	PENDING	Broadhurst	WANMAN	100%	100%	370
E45/7129	PENDING	Broadhurst	WANMAN	100%	100%	174