

29 January 2026

## Drilling to Commence Testing New Gold Targets at Beatty Park Sth

### HIGHLIGHTS

- ~3,000m aircore drilling program targeting the newly identified T1 gold target<sup>1</sup> scheduled to commence early February.
- T1 is a discrete gold target located 200m west of Tambourah's previous first-pass aircore.
- T1 is defined by a prominent north-south structural break and deflection evident in SAM imagery, coincident with contiguous gold-in soil anomaly expressed in both Ultrafine and historic auger sampling<sup>2</sup>.

Tambourah Metals Limited (**ASX:TMB**) advises that drilling is due to commence on a ~3,000m aircore program targeting the recently defined Ultrafine gold-in-soil anomaly positioned over a key structural break interpreted from SAM geophysical imagery (see Figure 1).

The T1 (+10ppb Au) soil anomaly extends for roughly 400m, peaks at 90ppb Au and overlies a favourable structural feature marked by a flexure from northwest to north-south. The planned drillhole locations are shown in relation to the Ultrafine soil results in Figure 1. The program is expected to take approximately one week to complete.

RC and aircore drilling is planned to test additional gold targets at Beatty Park Sth once heritage clearance has been granted.

---

<sup>1</sup> See Tambourah's ASX announcement dated 22<sup>nd</sup> January 2026.

<sup>2</sup> See Tambourah's ASX announcement dated 15<sup>th</sup> April 2025.

#### Registered Address

Tambourah Metals Ltd  
ABN: 196 46651 612  
U2, LVL 2, 10 Ord St,  
West Perth WA 6005

#### Board Members

Rita Brooks	Executive Chairperson
Bill Marmion	Non-Executive Director
Bill Clayton	Non-Executive Director

#### Contact

T: +61 8 9481 8669  
E: [admin@tambourahmetals.com.au](mailto:admin@tambourahmetals.com.au)  
W: [tambourahmetals.com.au](http://tambourahmetals.com.au)

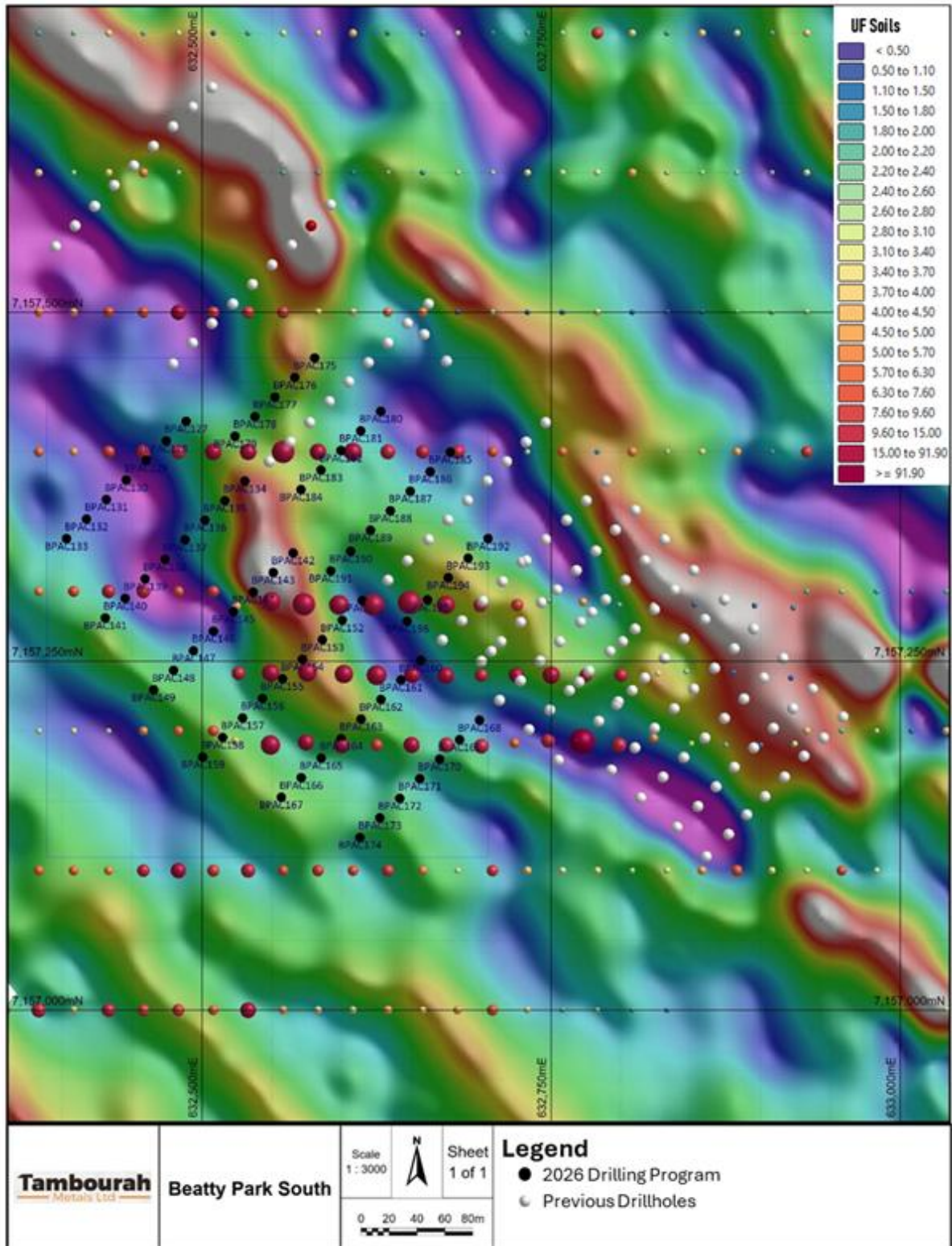


Figure 1 T1 Ultrafine gold-in-soil anomaly and planned drilling. Background SAM 1VD magnetometric conductivity image east sun angle, GDA94 zone 50.

This announcement has been authorised for release by the Board of Directors of the Company.

For further information, please contact:

Rita Brooks

**Executive Chairperson**

T: 08 9481 8669

E: [rita.brooks@tambourahmetals.com.au](mailto:rita.brooks@tambourahmetals.com.au)

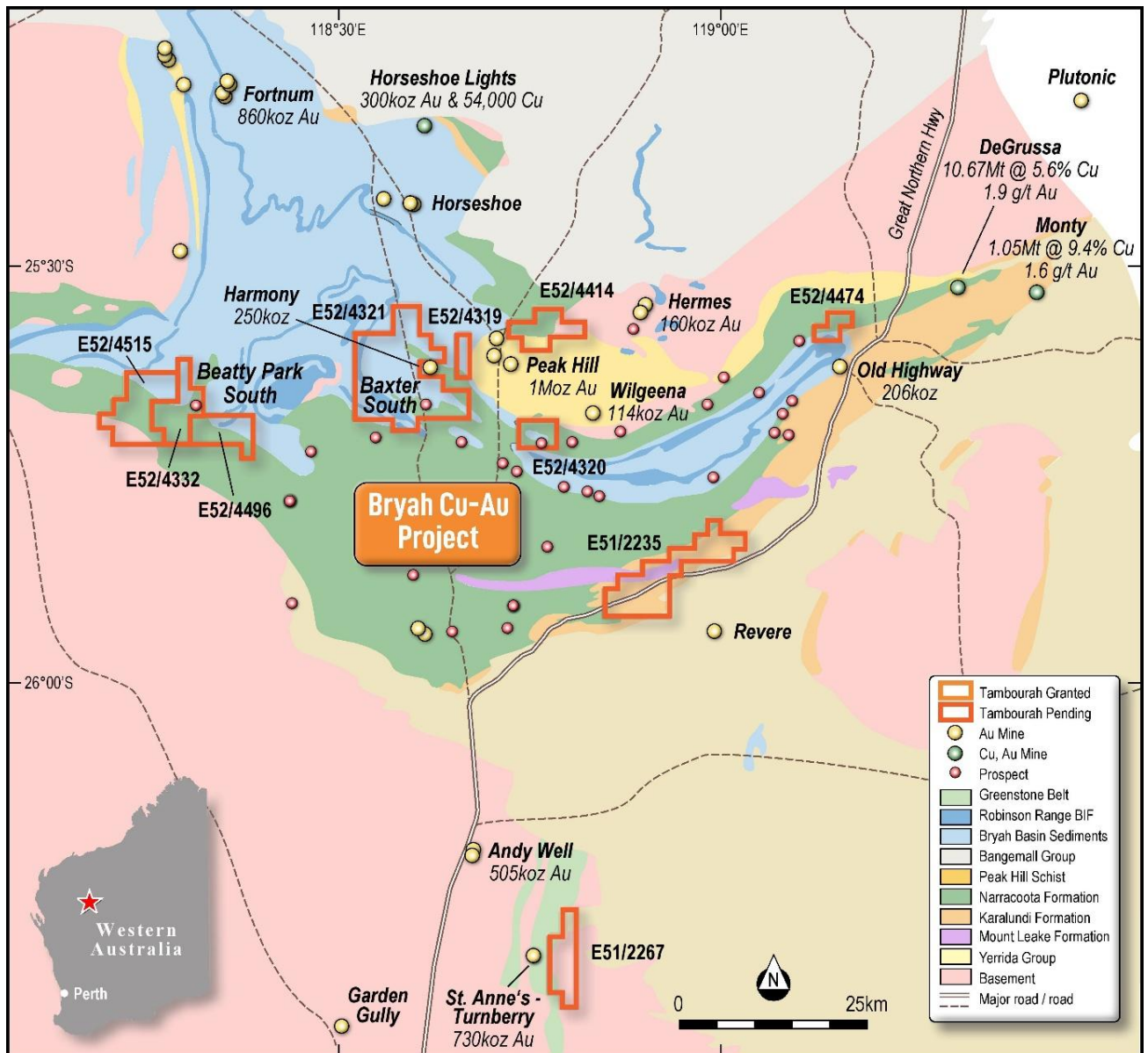


Figure 2: Tambourah Metal's Bryah Gold Project Location Plan.

## About Tambourah Metals

Tambourah Metals is a West Australian exploration company established in 2020 to develop gold and critical mineral projects. Tambourah is exploring for Gold and Critical Minerals at the Tambourah, Shaw River and Speewah Nth projects and Gold at the Bryah project in the Murchison region. Since listing the Company has extended the portfolio to include additional critical mineral projects in the Pilbara and gold projects in the Bryah, acquiring strategic positions in districts with known endowment and production.

## Forward Looking Statements

Certain statements in this document are or may be “forward-looking statements” and represent Tambourah’s intentions, projections, expectations, or beliefs concerning among other things, future exploration activities. The projections, estimates and beliefs contained in such forward-looking statements don’t necessarily involve known and unknown risks, uncertainties, and other factors, many of which are beyond the control of Tambourah Metals, and which may cause Tambourah Metals actual performance in future periods to differ materially from any express or implied estimates or projections. Nothing in this document is a promise or representation as to the future. Statements or assumptions in this document as to future matters may prove to be incorrect and differences may be material. Tambourah Metals does not make any representation or warranty as to the accuracy of such statements or assumptions.

The references in this announcement to Exploration Results were reported in accordance with Listing Rule 5.7 in the following announcements:

- *“Drilling Planned for Bryah Gold Project” 15<sup>th</sup> April 2025.*
- *“Expanded Gold Targets at Beatty Park Sth” 22<sup>nd</sup> January 2026.*

The Company confirms it is not aware of any new information or data that materially affects the information in the original reports and that the form and context in which the Competent Person’s findings are presented have not been materially modified from the original reports.

## Competent Person’s Statement

The information in this report that relates to Exploration Results is based on information compiled by Mr. Bill Clayton, Geology Manager and a shareholder and Director of the Company, who is a Member of the Australian Institute of Geoscientists. Mr. Bill Clayton has sufficient experience which is relevant to the style of mineralisation and type of deposits under consideration and to the activity which he is undertaking to qualify as a Competent Person as defined in the 2012 Edition of the Australasian Code for Reporting of Exploration Results, Mineral Resources and Ore Reserves. Mr. Clayton consents to the inclusion in the report of the matters based on his information in the form and context in which it appears.