

27 January 2026

DRILLING UNDERWAY AT ROUYN GOLD PROJECT, QUÉBEC

15,000m Program Targets Resource Growth at Astoria

Highlights

- Phase 1 diamond drilling now underway at the Rouyn Gold Project in Québec, Canada
- 15,000 metres planned, representing an important milestone in advancing the Project
- Drilling targets extensions and priority zones in the eastern portion of the Rouyn mineralised corridor
- Program designed to systematically test priority targets and enhance geological confidence

Ardiden Ltd (ASX: ADV) (“Ardiden” or “the Company”) is pleased to announce that diamond drilling has commenced at its Rouyn Gold Project in Québec, Canada. The 15,000-metre Phase 1 diamond drill program represents the Company’s first drilling campaign at Rouyn and represents a key milestone in unlocking the project’s growth potential.

Drilling has commenced at the Astoria Project Area, a high-priority target located in the eastern portion of the known mineralised corridor, which hosts areas of historic mining activity. Astoria is considered prospective for extensions to known mineralisation along strike and at depth, as well as the identification of additional mineralised zones.

Commenting on the commencement, Managing Director Andrew Stocks stated:

“Commencing drilling at Rouyn marks an important milestone for the Company. This 15,000 metre Phase 1 program has been carefully designed to systematically test priority targets, beginning with Astoria, which we see as a key growth area within the broader Rouyn mineralised corridor. We are pleased with the strong on-ground execution to date, supported by our experienced Québec-based team and contractors. With the rig now turning, we look forward to delivering a steady flow of results to the market as the program progresses.”



Figure 1 – Drill rig mobilisation & set-up at the Rouyn Gold Project – Astoria Project Area, Québec.

Phase 1 Drill Program – Astoria Project Area

The Phase 1 drilling program is designed to systematically evaluate priority target zones within and adjacent to the existing mineralised footprint at Rouyn. Initial drilling at Astoria reflects its strategic position within the eastern sector of the mineralised corridor and its potential to support future resource growth.

The objectives of the Phase 1 program include:

- testing extensions to known mineralisation along strike and at depth;
- improving geological confidence across priority target zones; and
- supporting future exploration and resource growth initiatives at Rouyn.

Drilling will be undertaken by **Forge Val d'Or** with logistical support provided by **Explo-Logik**, both of which were subject to competitive tender and engaged on the basis of pricing, capacity and regional experience. Drilling will continue throughout the Phase 1 program, with results to be reported as they are received, verified and interpreted.

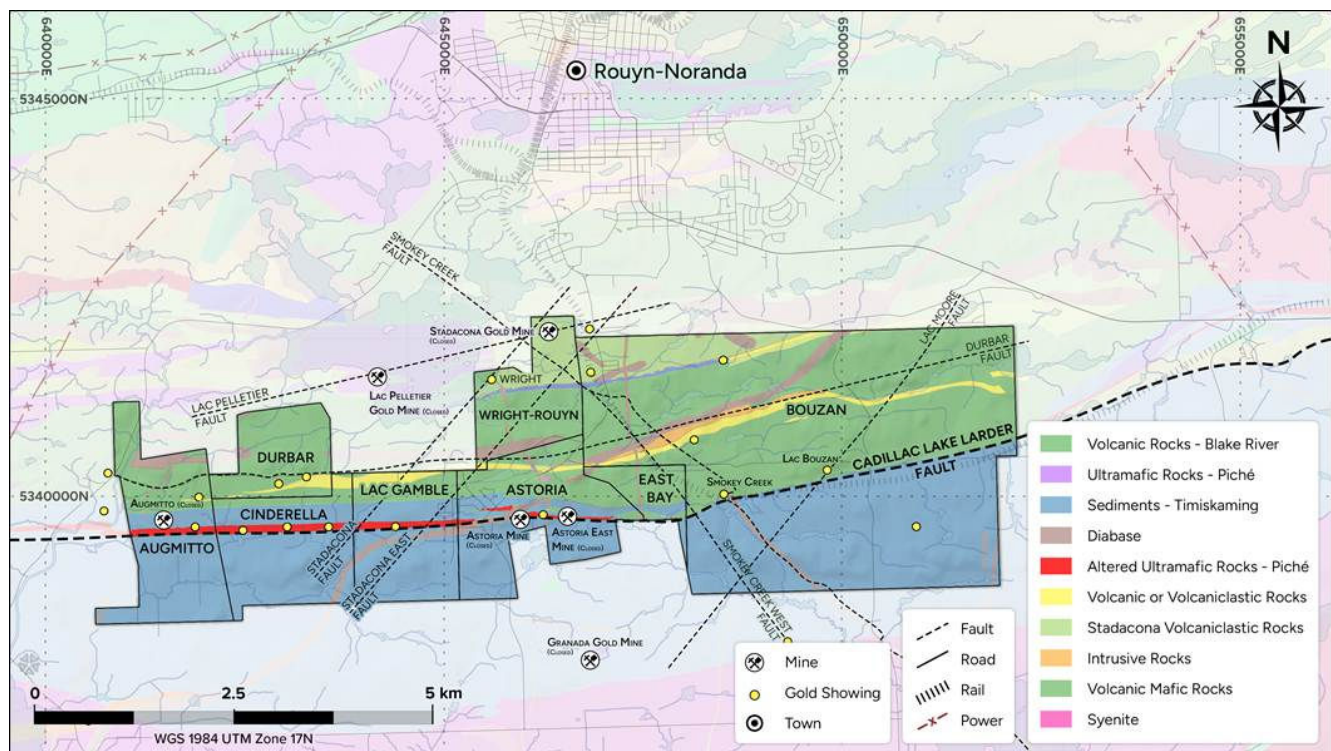


Figure 2 – Rouyn Gold Project

The Rouyn Gold Project is located in the Rouyn-Noranda district of the Abitibi greenstone belt, Québec – one of the world's most prolific gold-producing regions. The Project benefits from:

- excellent regional access and established infrastructure;
- proximity to skilled mining services; and
- location within trucking distance of multiple gold processing facilities.

Prior to commencement of drilling, Ardiden successfully completed its first community information session.



Drilling will continue throughout the Phase 1 program, with market updates expected as results become available. Ardiden remains focused on advancing Rouyn through disciplined exploration and value-driven decision-making.

This information is authorised for ASX release by the Board.

Engage with this announcement at the [Ardiden Investor Hub](#).

For further information:

Andrew Stocks
Managing Director

Tara Robson
Director and Company Secretary

Tel: +61 8 6184 5938
investors@ardiden.com.au

More information is available from the Company's website: www.ardiden.com.au

About Ardiden

Ardiden is a Canadian focused gold company exploring two high-quality gold projects in Canada's premier mining jurisdictions. The Rouyn Project is located on the Cadillac Break of western Québec, one of the world's most productive gold belts, producing approximately 200M ounces over the past century. The Pickle Lake Project, located in the well-endowed Uchi Geological Subprovince of north-west Ontario, home to many past producing mines, provides exploration upside at a district scale.

Forward Looking Statement

This announcement may contain some references to forecasts, estimates, assumptions and other forward-looking statements. Although the Company believes that its expectations, estimates and forecast outcomes are based on reasonable assumptions, it can give no assurance that they will be achieved. They may be affected by a variety of variables and changes in underlying assumptions that are subject to risk factors associated with the nature of the business, which could cause actual results to differ materially from those expressed herein. All references to dollars (\$) and cents in this presentation are to Australian currency, unless otherwise stated. Investors should make and rely upon their own enquires and assessments before deciding to acquire or deal in the Company's securities.