

27 January 2026

Expansive Copper Zone at the Haddon Prospect

Encounter Resources Limited (ASX: ENR) ('Encounter' or 'the Company') is pleased to announce the reconnaissance reverse circulation (RC) drilling at the Haddon prospect returned extensive copper and silver anomalism across the majority of holes in the nine-hole program.

The Haddon prospect forms part of Encounter's 100% owned Yeneena Copper Project in the Paterson Province (WA).

A follow-up EIS co-funded diamond drill hole intersected the upper portion of the prospective black shale horizon, with assays pending, and further diamond drilling planned.

Key Highlights:

- **Encounter completed a 9-hole reverse circulation (RC)** program in November 2025 to test copper and associated metal anomalies identified in earlier aircore drilling
- RC drilling identified a **laterally extensive copper anomaly (+1000 Cu ppm)** over an area of approximately 700m x 700m, **centred on a major regional fault**
- The core of the copper anomaly contained **strong silver anomalism (+6g/t Ag)** broadly coincident with the interpreted structure
- A diamond drill rig was mobilised in December 2025 which intersected the upper portion of the prospective black shale target horizon however field conditions necessitated demobilisation before target depth could be reached
- Follow up deeper drilling is planned for April 2026 as part of a broader copper exploration program across the Paterson Province

Executive Chairman, Will Robinson, Comments:

"RC drilling completed at Haddon late in 2025 delineated a laterally extensive zone of copper anomalism with a core of strong silver results. A diamond rig was promptly mobilised which successfully intersected the upper contact of the prospective black shale horizon that hosts the Nifty and Maroochydore copper deposits in the region. Field conditions meant we could not complete the diamond hole in 2025 to our target at the base of this unit.

We will complete this diamond drill hole in April 2026 to test the basal contact of the prospective horizon as part of a broader copper exploration across the Yeneena and Lamil Projects in the Paterson Province.

In parallel, our Aileron exploration team is preparing for an expanded program in 2026, and multiple rounds of drilling results from the 2025 season are expected over the coming months."

Haddon Copper Prospect

The Haddon prospect is located within the Broadhurst Formation adjacent to a major regional fault, a geological setting considered analogous to the Nifty copper deposit, located approximately 50km to the north-west.

Aircore drilling at Haddon in 2023 targeted a hydrogeochemical anomaly (from sampling of groundwater from drillholes) and intersected anomalous copper, silver, and base metal values in 400m-spaced holes adjacent to a major regional fault structure. Follow-up aircore drilling in 2024 extended the copper anomaly a further 600 metres to the north.

The anomalous intervals are hosted within an iron-manganese-rich horizon located at the base of the weathering zone. 23PTAC109 from the aircore program showed the most significant multi-element anomalism including:

- 15m @ 21.8 g/t Ag, 1729ppm Cu, 1342ppm Pb, 452ppm Zn, 350ppm Co from 69m to end of hole (23PTAC0109)¹

Petrographic analysis of the drill chips identified interpreted fault and gossanous textures and support a model where primary mineralisation may occur at depth adjacent to a mineralising fault which has remobilised primary copper sulphide mineralisation at depth into the near-surface horizon.

Interpretation of airborne EM data identified localised fold axes and a high priority target area associated with the apex of folds adjacent to the fault corridor. Importantly, a zone of low conductivity coincides with the near-surface copper anomalism intersected in multiple aircore holes and may potentially reflect alteration related to a mineralising event.

The RC drill program completed in November 2025 targeted the faulted corridor and the interpreted fold axes (see Figure 1). RC drilling outlined laterally extensive +1000ppm copper-silver anomalism (Figure 1) encompassing a 700m x 700m area centred around the major regional fault.

Significant intersections from the RC program include:

- 22m @ 920ppm Cu, 4.61g/t Ag, 739ppm Co from 86m to 108m (EPT2321)
- 8m @ 1060ppm Cu, 7.24g/t Ag from 74m to 82m (EPT2317)
- 10m @ 1580ppm Cu, 2.03g/t Ag, 165ppm Co from 74m to 84m (EPT2319)
- 8m @ 1142ppm Cu, 1.78g/t Ag, 235ppm Co from 100m to 108m (EPT2323)

The Company mobilised a diamond drill rig in December 2025 to test the copper sulphide target at depth. Drilling intersected the top of the target prospective black shale horizon at 573m before field conditions necessitated demobilisation and the hole left to be completed in early 2026.

Drill core from the black shale unit intersected in the initial diamond hole at Haddon has been transported to Perth for further geological review and sampling for assay.

Follow up diamond drilling will commence in April 2026 to test the basal contact of this black shale horizon, which is the most prospective position for primary copper sulphide mineralisation.

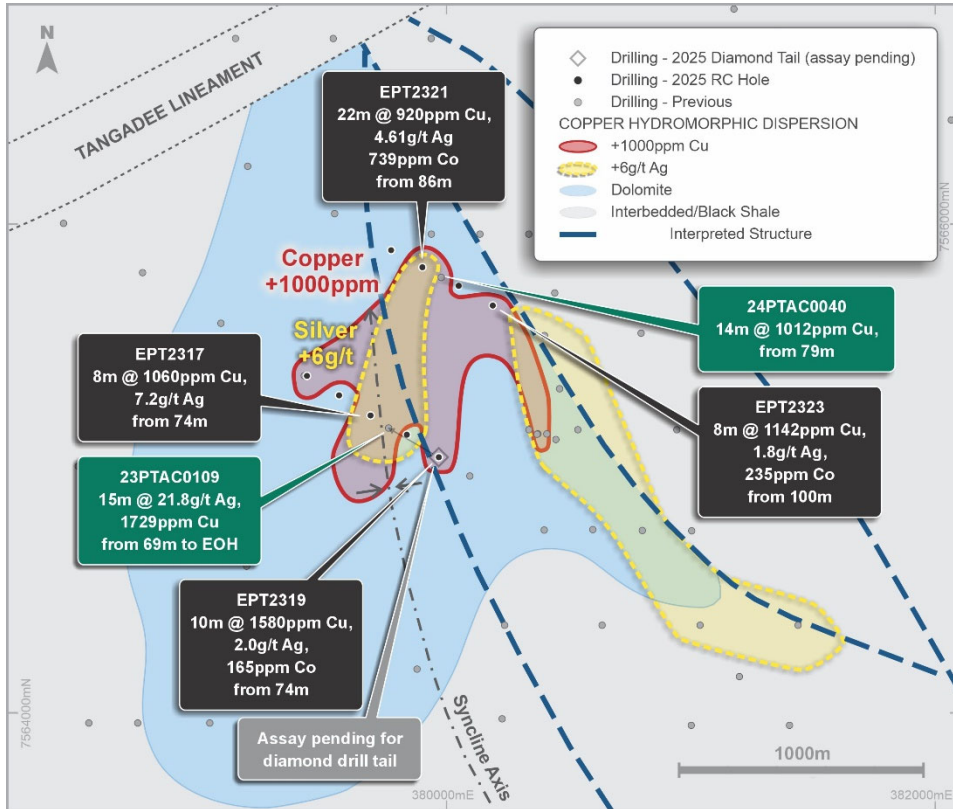


Figure 1: Haddon Prospect exploration summary plan¹

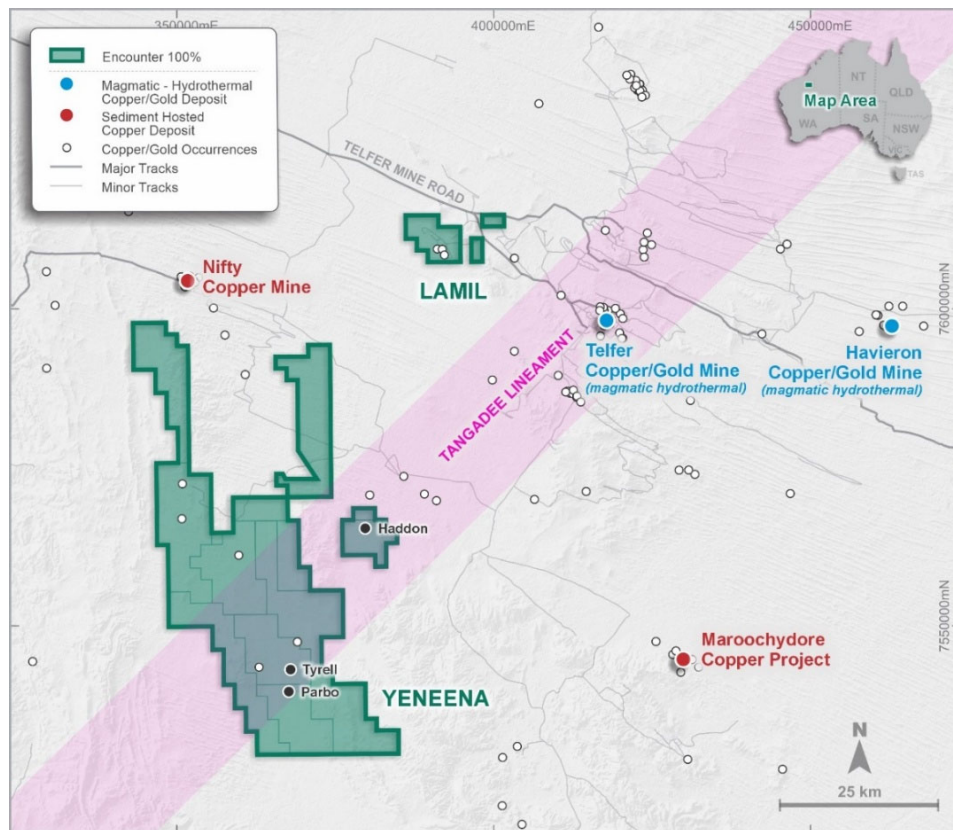


Figure 2 - Yeneena Project Location Plan

-ENDS-

This announcement has been approved for release by the Board of Encounter Resources Limited.

For further information, please contact:

Will Robinson
Executive Chairman
 +61 8 9486 9455
contact@enrl.com.au

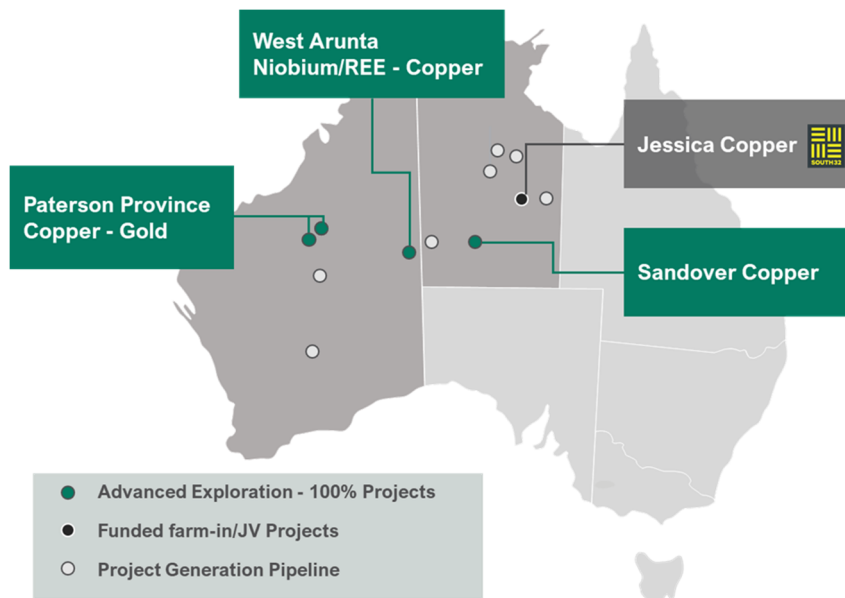
Stephen Moloney
Investor Relations - Corporate Storytime
 +61 403 222 052
stephen@corporatestorytime.com

About Encounter

Encounter Resources Limited (ASX:ENR) is a leading Australian mineral exploration company focused on the discovery of major copper and niobium/rare earth element (REE) deposits.

The Company holds a commanding portfolio of 100%-owned projects located in some of Australia’s most prospective mineral belts, targeting copper and critical minerals. Key among these is the Aileron Project in the highly endowed West Arunta region of Western Australia, emerging as a significant frontier for critical mineral exploration.

Encounter’s strategy is centred on high-impact discovery in Tier 1 jurisdictions, leveraging strong technical capability and a proven track record of attracting leading industry partners.



Deposit	1.0% Nb ₂ O ₅ cut-off (subset of 0.25% Nb ₂ O ₅ cut-off)		0.25% Nb ₂ O ₅ cut-off	
	Tonnage (Mt)	Grade (% Nb ₂ O ₅)	Tonnage (Mt)	Grade (% Nb ₂ O ₅)
Green	12.1	1.63	48.0	0.81
Emily	3.7	1.94	13.9	0.93
Crean	3.5	1.92	5.7	1.38
Total	19.2	1.74	67.6	0.88

Table 1 – Aileron Project Inferred Mineral Resource Estimate²

Inferred Mineral Resource Estimate (JORC 2012)			
Domain	Tonnes (Mt)	Copper Grade (%)	Contained Copper Metal (kt)
HG	1.1	1.27%	8.2
LG	1.7	0.48%	14.0
Total	2.9	0.79%	22.6

Table 2 – Tyrell Copper Oxide Mineral Resource Estimate³

Notes

Table 1:

- The resource is constrained within optimised pit shells based on a price of US\$45 per kilogram Nb (US\$30/kg FeNb) and is reported above a 0.25% Nb₂O₅ cut-off grade.
- The resource reported above a 1% Nb₂O₅ cut-off grade is a subset of the 0.25% Nb₂O₅ cut-off grade.
- All figures are rounded to reflect appropriate levels of confidence. Apparent differences may occur due to rounding.

Table 2

- The resource is constrained within an optimised pit shell based on a Cu price of A\$17,000 per tonne and is reported above a 0.25% Cu cut-off grade.
- All tonnages reported are dry metric tonnes.
- All figures are rounded to reflect appropriate levels of confidence. Apparent differences may occur due to rounding.

The information in this report that relates to Exploration Results is based on information compiled by Sarah James who is a Member of the Australasian Institute of Mining and Metallurgy. Sarah James is a full-time employee of Encounter Resources Limited and has sufficient experience, which is relevant to the style of mineralisation under consideration, to qualify as a Competent Person as defined in the 2012 Edition of the 'Australian Code for Reporting of Exploration Results, Mineral Resources and Ore Reserves'. Mrs James consents to the inclusion in the report of the matters based on the information compiled by her, in the form and context in which it appears.

The Company confirms that it is not aware of any new information or data that materially affects the information in the relevant ASX releases and confirms that it is not aware of any new data or information that materially affects the information disclosed in this announcement and previously released by the Company in relation to mineral resource estimates. All material assumptions and technical parameters underpinning the mineral resource estimates in the relevant market announcements continue to apply and have not materially changed.

The Company confirms that the form and context in which the Competent Person's findings are presented have not been materially modified from the original market announcements.

The information in this report that relates to Exploration Results in the ASX announcements dated 28 January 2010, 16 September 2010 and 27 June 2011 is based on information compiled by Mr. Peter Bewick who is a Member of the Australasian Institute of Mining and Metallurgy. Mr. Bewick is a holder of shares and options in, and is a director of Encounter Resources Ltd, and has sufficient experience which is relevant to the style of mineralisation under consideration to qualify as a Competent Person as defined in the 2004 Edition of the 'Australian Code for Reporting of Exploration Results, Mineral Resources and Ore Reserves'. Mr Bewick consents to the inclusion in the report of the matters based on the information compiled by him, in the form and context in which it appears.

Hole ID	from (m)	to (m)	interval (m)	Ag (ppm)	Co (ppm)	Cu (ppm)
EPT2315	72	84	12	2.69	205	982
including	74	78	4	2.53	257	1382
EPT2317	74	82	8	7.24	186	1060
including	76	80	4	8.96	193	1396
EPT2318 [^]	78	80	2	6.60	120	235
EPT2319	74	84	10	2.03	165	1580
including	76	84	8	1.81	187	1786
EPT2320	78	88	10	1.61	194	559
EPT2320	98	100	2	3.81	78	590
EPT2321	86	108	22	4.61	739	920
including	88	96	8	4.32	434	1160
EPT2321 [^]	102	116	14	4.39	1144	586
EPT2322	80	82	2	2.09	215	512
EPT2322 [^]	248	250	2	4.41	137	49
EPT2323	100	108	8	1.78	235	1142
including	102	108	6	1.93	286	1299

Table 3. Drillhole assay intersections above 500ppm Cu cutoff. Intervals greater than 0.1% Cu have been reported as including intervals. [^] Selected intervals greater than 1000ppm Co or 4g/t Ag have been itemised.

Hole_ID	Hole_Type	Grid_ID	MGA_East	MGA_North	MGA_RL	Azimuth	Dip	EOH Depth
EPT2315	RC	MGA94_51	379424	7565379	326	122.02	-69.7	156
EPT2316	RC	MGA94_51	379561	7565293	327	120.14	-69.8	150
EPT2317	RC	MGA94_51	379693	7565214	327	119.01	-69.4	312
EPT2318	RC	MGA94_51	379834	7565134	326	302.89	-70.0	216
EPT2319	RC	MGA94_51	379969	7565046	329	302.82	-70.0	144
EPT2320	RC	MGA94_51	379774	7565894	323	118.92	-70.2	126
EPT2321	RC	MGA94_51	379907	7565823	324	121.42	-69.9	126
EPT2322	RC	MGA94_51	380048	7565745	325	302.22	-69.9	252
EPT2323	RC	MGA94_51	380189	7565661	327	301.64	-69.5	138

Table 4. Drillhole collar table.

¹ ASX announcement 5 March 2024

² ASX announcement 14 May 2025

³ ASX announcement 26 September 2025

SECTION 1 SAMPLING TECHNIQUES AND DATA

Criteria	JORC Code explanation	Commentary
Sampling techniques	<i>Nature and quality of sampling (e.g. cut channels, random chips, or specific specialised industry standard measurement tools appropriate to the minerals under investigation, such as down hole gamma sounds, or handheld XRF instruments, etc). These examples should not be taken as limiting the broad meaning of sampling.</i>	<p>RC holes have been drilled at the Haddon Prospect to obtain samples for geological logging and assaying.</p> <p>RC drilling at Haddon obtained 2m composite samples each approximately 1-3kg. Samples were collected on the rig using a cone splitter. This composite sample was sent for lab analysis.</p> <p>All samples underwent routine pXRF analysis using a VANTA-VRM to aid in logging and identifying zones of interest.</p>
	<i>Include reference to measures taken to ensure sample representivity and the appropriate calibration of any measurement tools or systems used</i>	Drill hole collar locations were recorded by handheld GPS, which has an estimated accuracy of $\pm 5m$.
	<i>Aspects of the determination of mineralisation that are Material to the Public Report. In cases where 'industry standard' work has been done this would be relatively simple (e.g. 'reverse circulation drilling was used to obtain 1 m samples from which 3 kg was pulverised to produce a 30 g charge for fire assay'). In other cases more explanation may be required, such as where there is coarse gold that has inherent sampling problems. Unusual commodities or mineralisation types (e.g. submarine nodules) may warrant disclosure of detailed information</i>	<p>RC drilling at Haddon was used to obtain samples at 2 metre composite intervals. Samples were collected on the rig using a cone splitter. This composite sample was sent for lab analysis.</p> <p>All samples were submitted to Intertek Laboratories in Perth where they were crushed and pulverised for analyses.</p> <p>Samples were analysed in Perth using for Intertek method 4A/MS48 with overlimit determination via 4AH/OM. (4A/MS48 reports elements by four acid digestion and ICP-MS analysis. This method produces quantitative results of all elements, including those encapsulated in resistive minerals.)</p>
Drilling techniques	<i>Drill type (e.g. core, reverse circulation, open-hole hammer, rotary air blast, auger, Bangka, sonic, etc) and details (e.g. core diameter, triple or standard tube, depth of diamond tails, face-sampling bit or other type, whether core is oriented and if so, by what method, etc).</i>	Results reported in this announcement refer to samples from RC drilling at Haddon.
Drill sample recovery	<i>Method of recording and assessing core and chip sample recoveries and results assessed</i>	Sample recoveries were estimated as a percentage and recorded by Encounter field staff.
	<i>Measures taken to maximise sample recovery and ensure representative nature of the samples</i>	Driller's used appropriate measures to minimise down-hole and/or cross-hole contamination in RC drilling. Where contamination of the sample was suspected this was noted by Encounter field staff as a percentage.
	<i>Whether a relationship exists between sample recovery and grade and whether sample bias may have occurred due to preferential loss/gain of fine/coarse material.</i>	To date, no detailed analysis to determine the relationship between sample recovery and/or and grade has been undertaken for this drill program.

Criteria	JORC Code explanation	Commentary
Logging	<i>Whether core and chip samples have been geologically and geotechnically logged to a level of detail to support appropriate Mineral Resource estimation, mining studies and metallurgical studies.</i>	Encounter geologists have completed geological logs on all holes where assays are reported. All reported holes have been logged in full with lithology, alteration and mineralisation recorded.
	<i>Whether logging is qualitative or quantitative in nature. Core (or costean, channel, etc) photography.</i>	Geological logging is qualitative in nature and records interpreted lithology, alteration, mineralisation and other geological features of the samples.
	<i>The total length and percentage of the relevant intersections logged</i>	Encounter geologists have completed geological logs on all holes reported in this announcement
Sub-sampling techniques and sample preparation	<i>If core, whether cut or sawn and whether quarter, half or all core taken.</i>	No assays from core drilled is reported in this announcement.
	<i>If non-core, whether riffled, tube sampled, rotary split, etc and whether sampled wet or dry.</i>	RC drilling was used to obtain samples at 2 metre composite intervals. Samples were collected on the rig using a cone splitter. This composite sample was sent for lab analysis. Samples were recorded as being dry, moist or wet by Encounter field staff.
	<i>For all sample types, the nature, quality and appropriateness of the sample preparation technique.</i>	Sample preparation was completed at Intertek Laboratories in Perth and analysed in the Perth laboratory. Samples were crushed and pulverised to enable a subsample for analyses. This is considered appropriate for the analysis undertaken.
	<i>Quality control procedures adopted for all sub-sampling stages to maximise representivity of samples.</i>	Field QC procedures involve the use of commercial certified reference materials (CRMs) and blanks. The insertion rate of the CRM and is 1:50 and blanks are inserted at a rate of 1:100. The results from QC procedures are assessed on a periodical basis.
	<i>Measures taken to ensure that the sampling is representative of the in situ material collected, including for instance results for field duplicate/second-half sampling.</i>	Field duplicates were taken during RC drilling and were collected on the rig via splitter at a rate of 1:50. The results from these duplicates are assessed on a periodical basis.
	<i>Whether sample sizes are appropriate to the grain size of the material being sampled.</i>	The sample sizes are considered appropriate to give an accurate indication of the mineralisation.
Quality of assay data and laboratory tests	<i>The nature, quality and appropriateness of the assaying and laboratory procedures used and whether the technique is considered partial or total.</i>	All samples were submitted to Intertek Laboratories in Perth for analysis. Assays have been reported from Intertek 4A/MS48 with overlimit determination via 4AH/OM. Intertek method 4A/MS48 reports elements by four acid digestion and ICP-MS analysis. It provides a quantitative analytical approach for a broad suite of trace elements. This method is considered a complete digestion allowing resistive mineral phases to be liberated. Elements reported: Ag, Al, As, Ba, Be, Bi, Ca, Cd, Ce, Co, Cr, Cs, Cu, Fe, Ga, Ge, Hf, In, K, La, Li, Mg, Mn, Mo, Na, Nb, Ni, P, Pb, Rb, Re, S, Sb, Sc, Se, Sn, Sr, Ta, Te, Th, Ti, Tl, U, V, W, Y, Zn, Zr. Standard laboratory QAQC was undertaken and monitored.
	<i>For geophysical tools, spectrometers, handheld XRF instruments, etc, the parameters used in determining the analysis</i>	Samples at Haddon underwent routine pXRF analysis at 2 metre intervals using a VANTA-VRM to aid in logging and identifying zones of interest.

including instrument make and model, reading times, calibrations factors applied and their derivation, etc.

All pXRF readings were taken in Geochem mode with a 30 second 3 beam reading.

OREAS supplied standard reference materials were used to calibrate the pXRF instrument.

No pXRF results are being reported.

Criteria	JORC Code explanation	Commentary
	<i>Nature of quality control procedures adopted (e.g. standards, blanks, duplicates, external laboratory checks) and whether acceptable levels of accuracy (i.e. lack of bias) and precision have been established.</i>	Laboratory QAQC involves the use of internal lab standards using certified reference material and blanks as part of in-house procedures. Encounter also submits an independent suite of CRMs and blanks (see above). A formal review of this data is completed on a periodic basis.
Verification of sampling and assaying	<i>The verification of significant intersections by either independent or alternative company personnel.</i>	Geological observations included in this report have been verified by Vincent Crombez (Senior Geologist).
	<i>The use of twinned holes.</i>	No twinned holes are being reported at the Haddon prospect.
	<i>Documentation of primary data, data entry procedures, data verification, data storage (physical and electronic) protocols.</i>	Primary logging and sampling data is being collected for drillholes on toughbook computers using Excel templates and Maxwell Geoservice's LogChief software. Data collected is sent offsite to Encounter's Database (Datashed software), which is backed up daily.
	<i>Discuss any adjustment to assay data.</i>	No adjustment has been made to assay data.
Location of data points	<i>Accuracy and quality of surveys used to locate drill holes (collar and down-hole surveys), trenches, mine workings and other locations used in Mineral Resource estimation.</i>	Drill hole collar locations are determined using a handheld GPS. Down hole surveys were collected during drilling at approximately 30m intervals downhole.
	<i>Specification of the grid system used.</i>	Horizontal Datum: Geocentric Datum of Australia 1994 (GDA94) Map Grid of Australia 1994 (MGA94) Zone 51
	<i>Quality and adequacy of topographic control.</i>	RLs were assigned using SRTM data (3 arc-seconds resolution).
Data spacing and distribution	<i>Data spacing for reporting of Exploration Results.</i>	The drill hole spacing at Haddon is nominally 80-160m spaced with drill traverses 700m apart.
Criteria	JORC Code explanation	Commentary
	<i>Whether the data spacing and distribution is sufficient to establish the degree of geological and grade continuity appropriate for the Mineral Resource and Ore Reserve estimation procedure(s) and classifications applied.</i>	Mineralisation has not yet demonstrated to be sufficient in both geological and grade continuity appropriate for the Mineral Resource and Ore Reserve estimation procedure(s) and classifications to be applied.

Whether sample compositing has been applied. Intervals have been composited using a length weighted methodology.

Orientation of data in relation to geological structure

Whether the orientation of sampling achieves unbiased sampling of possible structures and the extent to which this is known, considering the deposit type.

This is early-stage exploration drilling and the orientation of the hole with respect to key structures is not fully understood. Additional infill drilling is planned to test the orientation and continuity of mineralisation.

If the relationship between the drilling orientation and the orientation of key mineralised structures is considered to have introduced a sampling bias, this should be assessed and reported if material.

This is early-stage drilling and the orientation of the hole with respect to key structures is not fully understood. Additional infill drilling is planned to test the orientation and continuity of mineralisation.

Sample security

The measures taken to ensure sample security.

The chain of custody is managed by Encounter. Samples were transported by Encounter personnel and reputable freight contractors to the assay laboratory.

Audits or reviews

The results of any audits or reviews of sampling techniques and data.

Sampling techniques and procedures are regularly reviewed internally, as is data. To date, no external audits have been completed on Haddon data.

SECTION 2 REPORTING OF EXPLORATION RESULTS

Criteria	JORC Code explanation	Commentary
Mineral tenement and land tenure status	<i>Type, reference name/number, location and ownership including agreements or material issues with third parties including joint ventures, partnerships, overriding royalties, native title interests, historical sites, wilderness or national park and environmental settings.</i>	The Yeneena project is located within the tenements E45/2500, E45/2502, E45/2657, E45/2658, E45/2805, E45/2806, E45/3768, E45/4861, E45/5333, E45/5334 which are held 100% by Encounter Resources. The tenements are within Martu Native title.
Exploration done by other parties	<i>Acknowledgment and appraisal of exploration by other parties.</i>	The first wide spaced drilling in the Haddon target area was completed by WMC in the early 1990s. This RC drilling intersected zones of iron-manganese rich material with associated copper, silver, lead and zinc anomalism below Permian and Recent cover. IGO completed AC drilling (BM5 target) under and earn in and joint venture agreement during 2023 and 2024.
Geology	<i>Deposit type, geological setting and style of mineralisation</i>	The Yeneena project targets are hosted within sediments of the Broadhurst Formation in a similar geological setting to the Nifty copper deposit
Drill hole information	<i>A summary of all information material to the understanding of the exploration results including tabulation of the following information for all Material drill holes:</i> <ul style="list-style-type: none"> • <i>Easting and northing of the drill hole collar</i> • <i>Elevation or RL (Reduced Level – elevation above sea level in meters) of the drill hole collar</i> • <i>Dip and azimuth of the hole</i> • <i>Down hole length and interception depth</i> • <i>Hole length</i> 	Refer to tabulation in the body of this announcement
Data aggregation methods	<i>In reporting Exploration Results, weighting averaging techniques, maximum and/or minimum grade truncations (e.g. cutting of high grades) and cut-off grades are usually Material and should be stated.</i>	All reported assays have been length weighted, with a nominal 500ppm Cu lower limit and a maximum of 2m of internal dilution. Intervals greater than 1000ppm Cu have been reported separately. Selected intervals greater than 1000ppm Co or 4g/t Ag have been reported. No upper cutoffs have been applied.
	<i>Where aggregated intercepts incorporate short lengths of high grade results and longer lengths of low grade results, the procedure used for such aggregation should be stated and some typical examples of such aggregations should be shown in detail.</i>	All reported assays have been length weighted, with a nominal 500ppm Cu lower limit and a maximum of 2m of internal dilution. Intervals greater than 1000ppm Cu have been reported separately. Selected intervals greater than 1000ppm Co or 4g/t Ag have been reported. No upper cutoffs have been applied.
	<i>The assumptions used for any reporting of metal equivalent values should be clearly stated.</i>	No metal equivalents have been reported in this announcement.
Relationship between mineralization widths and intercept lengths	<i>These relationships are particularly important in the reporting of exploration results. If the geometry of the mineralization with respect to the drill hole angle is known, its nature should be reported. If it is not known and only the down hole lengths are reported, there should be a clear statement to this effect (e.g. ‘down hole length, true width not known’).</i>	Reported results are downhole length. True width geometry of the mineralisation is not yet known due to insufficient drilling in the targeted areas.

Criteria	JORC Code explanation	Commentary
Diagrams	<i>Appropriate maps and sections (with scales) and tabulations of intercepts should be included for any significant discovery being reported. These should include, but not be limited to a plane view of drill hole collar locations and appropriate sectional views.</i>	Refer to body of this announcement
Balanced Reporting	<i>Where comprehensive reporting of all Exploration Results is not practical, representative reporting of both low and high grades and/or widths should be practiced to avoid misleading reporting of Exploration Results.</i>	All reported assays have been length weighted, with a nominal 500ppm Cu lower limit and a maximum of 2m of internal dilution. Intervals greater than 1000ppm Cu have been reported separately. Selected intervals greater than 1000ppm Co or 4g/t Ag have been reported. No upper cutoffs have been applied.
Other substantive exploration data	<i>Other exploration data, if meaningful and material, should be reported including (but not limited to): geological observation; geophysical survey results; geochemical survey results; bulk samples – size and method of treatment; metallurgical test results; bulk density, groundwater, geotechnical and rock characteristics; potential deleterious or contaminating substances.</i>	All meaningful and material information has been included in the body of the text. No metallurgical assessments have been completed.
Further Work	<i>The nature and scale of planned further work (e.g. tests for lateral extensions or depth extensions or large – scale step – out drilling). Diagrams clearly highlighting the areas of possible extensions, including the main geological interpretations and future drilling areas, provided this information is not commercially sensitive.</i>	Further diamond drilling is planned at Haddon in 2026.