

Preliminary Environmental License Approved Without Restriction

Meteoric Resources NL (**ASX: MEI**) (**Meteoric** or the **Company**) is pleased to advise that it has obtained the Preliminary Environmental Licence (**LP**) for its Caldeira Rare Earth Ionic Clay Project (**Caldeira Project** or **Project**) in the state of Minas Gerais, Brazil.

The LP application was voted on by the State Council for Environmental Policy (**COPAM**) at a meeting on Friday 19 December 2025 in Belo Horizonte. The application received unanimous support from COPAM council members who accepted the favourable recommendation by technicians from the Environmental Foundation of the State of Minas Gerais (**FEAM**).

Highlights

- Caldeira Project LP Approved without restriction.
- Allows Meteoric to progress and submit the Project Installation License (**LI**) application, the final approval required for construction to commence.
- Continues the expedited development and approval process for the Caldeira Project.
- Maintains Project delivery timeline.

Managing Director, Stuart Gale, said: *"We are very pleased to have obtained the LP without restriction. This is strong validation for the Caldeira Project and allows us to quickly move to the next stage of the licensing process to obtain the LI for construction of the Project."*

We appreciate the strong, ongoing support received from the Municipality of Caldas, the State of Minas Gerais and FEAM, together with our advisors and our exceptionally hard-working team.

Together with the recent opening of the Pilot Plant, obtaining the LP caps off an extremely productive year for Meteoric. We delivered a Pre-Feasibility Study, announced our maiden reserve, progressed key engineering and metallurgical programs to support the feasibility study, continued to build our ionic clay intellectual property and maintained key Project delivery timelines. This ensures Meteoric is well positioned to secure final approvals, negotiate binding offtake agreements, complete the feasibility study and progress to Final Investment Decision, by the middle of 2026."

Background

In Brazil, the LP is the first stage of the licensing process required for projects that have an environmental or social impact. The LP is the critical approval as it confirms the Project's environmental viability, approves the location, as well as establishing basic requirements and conditions that must be met in the next phases.

Meteoric's LP application was supported by a 3,000-page Environmental Impact Assessment (**EIA**) which was submitted to FEAM in May 2024, following almost 12 months of environmental baseline and impact studies conducted by independent consultants. Following completion and lodgment of the EIA the subsequent process involved:

- Caldas Municipality public hearing to present the Project to the Community and respond to questions;
- Certificate of Regularity for Land Use and Occupation from Municipal Environmental Council (**CODEMA**) of Caldas;
- approval of the Council of Management of the Pedra Branca Conservation Area (**CONGEAPA**) to mine

inside the 3 kilometre 'Buffer Zone' surrounding the APA;

- site inspection by FEAM technicians of the Caldeira Project area;
- submission of Complimentary Information (ICs) requested by FEAM to clarify, support and strengthen the LP application; and
- preparation by FEAM of Technical Report with a final recommendation to approve the LP for the Caldeira Project.

LP Approval Areas

The LP area covers the first phase of the Project and includes resources and reserves located within the Southern licences of: Capão do Mel, Soberbo, and Figueira (Figure 1).

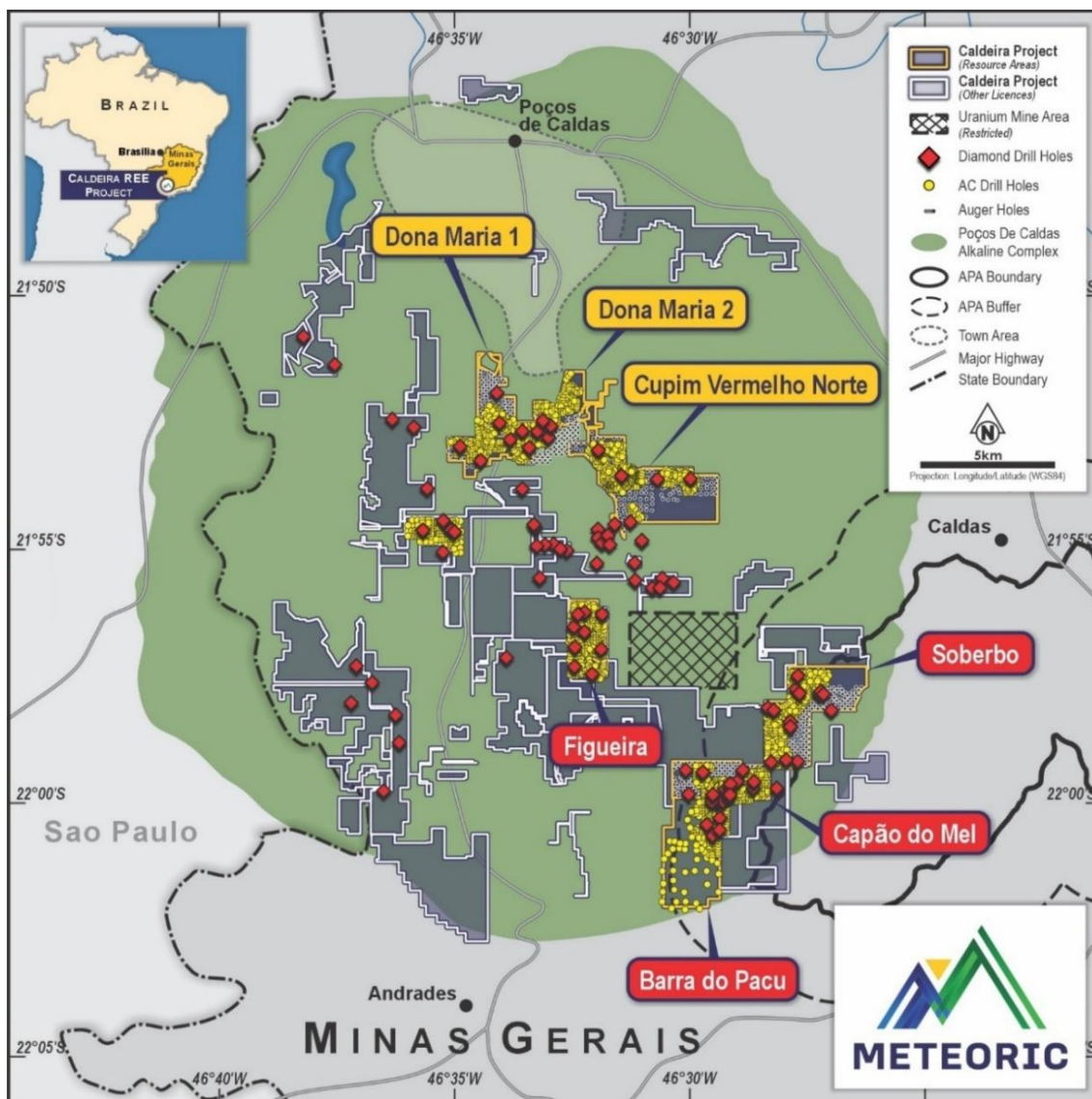


Figure 1: MEI Licences and drill hole location map of Caldeira REE Project.

Next Steps

Receipt of the LP allows Meteoric to progress with all other stages of its permitting and licencing process to deliver the Caldeira Project. Key next steps are the development of the Environmental Control Plan (PCA) which is the

main document necessary to support the application for the LI. The LI is expected to be lodged early 2026 with approval estimated in June 2026 in line with the original preferred project status granted by the State of Minas Gerais.

This release has been approved by the Board of Meteoric Resources NL.

For further information, please contact:

Stuart Gale

Managing Director

Meteoric Resources NL

E sgale@meteoric.com.au

T +61 8 6166 9112

Michael Vaughan

Investor and Media Relations

Fivemark

E michael.vaughan@fivemark.com.au

T +61 422 602 720

Some statements in this document may be forward-looking statements. Such statements include, but are not limited to, statements with regard to capacity, future production and grades, projections for sales growth, estimated revenues and reserves, targets for cost savings, the construction cost of new projects, projected capital expenditures, the timing of new projects, future cash flow and debt levels, the outlook for minerals prices, the outlook for economic recovery and trends in the trading environment and may be (but are not necessarily) identified by the use of phrases such as “will”, “expect”, “anticipate”, “believe” and “envisage”.

By their nature, forward-looking statements involve risk and uncertainty because they relate to events and depend on circumstances that will occur in the future and may be outside Meteoric’s control. Actual results and developments may differ materially from those expressed or implied in such statements because of a number of factors, including levels of demand and market prices, the ability to produce and transport products profitably, the impact of foreign currency exchange rates on market prices and operating costs, operational problems, political uncertainty and economic conditions in relevant areas of the world, the actions of competitors, activities by governmental authorities such as changes in taxation or regulation.