

17 December 2025

## Bobija Drill Assays Confirm Widespread Gold-Silver-Copper-Lead-Zinc Mineralisation

### HIGHLIGHTS:

- Assay results received for maiden reverse circulation (RC) drilling program at the Bobija Project confirm wide intervals of gold-silver-lead-zinc mineralisation, including:
  - **BMLRC001 - 52m @ 1.17g/t Au, 26.0g/t Ag, 0.12% Cu, 0.39% Pb & 1.01% Zn (from 9m)**
    - incl. 10m @ 2.18g/t Au, 47.2g/t Ag, 0.14% Cu, 0.76% Pb & 0.73% Zn (from 9m)
  - **BMLRC002 - 17m @ 1.44g/t Au, 34.6g/t Ag, 0.18% Cu, 0.49% Pb & 1.97% Zn (from 40m)**
  - **BMLRC002 - 11m @ 1.14g/t Au, 52.1g/t Ag, 0.24% Cu, 1.19% Pb & 1.56% Zn (from 71m)**
    - incl. 4m @ 1.83g/t Au, 118.8g/t Ag, 0.55% Cu, 2.66% Pb & 2.86% Zn (from 78m)
  - **BMLRC003 - 11m @ 3.15g/t Au, 22.6g/t Ag, 0.10% Cu, 0.57% Pb & 1.09% Zn (from 28m)**
  - **BMLRC005 - 23m @ 1.12g/t Au, 50.6g/t Ag, 0.20% Cu, 1.17% Pb & 1.94% Zn (from 9m)**
    - incl. 10m @ 1.57g/t Au, 98.3g/t Ag, 0.42% Cu, 2.55% Pb & 4.01% Zn (from 11m)
  - **BMLRC008 - 23m @ 1.15g/t Au, 20.6g/t Ag, 0.14% Cu, 0.67% Pb & 0.40% Zn (from 4m)**
  - **BMLRC009 - 16m @ 0.94g/t Au, 12g/t Ag, 0.28% Pb & 0.43% Zn**
- These results point to the area hosting a single contiguous zone of mineralisation across the entire mine area, an approximate 300m x 300m footprint with significant gold and silver associated with base metal mineralisation.
- Drill hole BMLRC001 targeted a previously undrilled area that had been interpreted by previous explorers as a barren zone and intersected a 50m thick (estimated true width) zone of mineralisation.
- Mineralisation is open ended at the limit of the Phase #1 drilling and planning is underway for a follow-up Phase #2 drilling program.

---

**Middle Island Resources Limited** (ASX:MDI, “Middle Island” or “the Company”) has received assay results for its maiden drilling program at the Bobija Mine area, Serbia, and recorded significant assay results across all areas drilled, extending mineralisation well beyond the limit of the previously defined mineralised zones.

**MDI Non-Executive Chairman, Daniel Raihani commented:**

*“The results of our maiden drilling program at Bobija, Serbia, further highlight the exceptional potential of the area and are exciting for several reasons. Firstly, we have successfully extended the known footprint of the Bobija deposit, and mineralisation remains open in all directions. In addition, we have intersected thick zones of substantial mineralisation in areas previously considered barren, further adding to the overall footprint of the deposit.*

*Historically, many drill holes were not assayed for gold, as exploration focused primarily on lead, zinc and barite. Importantly however, the results continue to demonstrate a strong association of gold and silver with the previously recognised base metal mineralisation at Bobija, including 52m @ 1.17g/t gold and 26.0g/t silver, alongside copper, lead and zinc. With both gold and silver trading near all-time highs, these assays point to a highly valuable target.*

*The Bobija deposit remains poorly covered by historical drilling and has not been systematically tested. These results demonstrate exceptional continuity of mineralisation and strongly support further exploration. This follows the assays from the recent channel sampling, which included encouraging results such as 46m @ 1.07g/t Gold and 92g/t Silver, 0.57% Copper, 2.08% Lead & 2.03% Zinc<sup>1</sup>. The Company is highly encouraged by these inaugural results and is already planning a Phase 2 drilling program to follow up on this success.”*

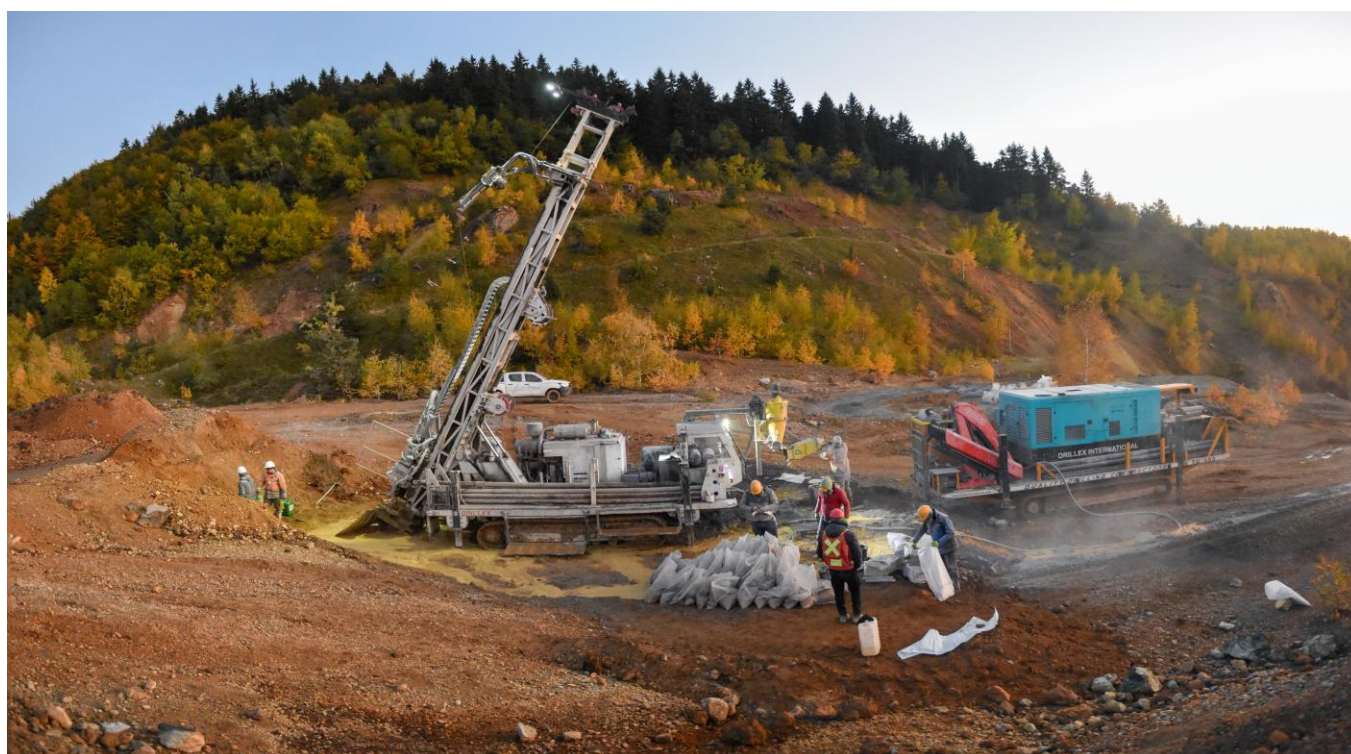


Figure 1: Drilling in the Bobija open pit mine area (Oct. 2025).

---

<sup>1</sup> Refer to ASX announcement - 12 November 2025 “Channel Sampling Confirms Bobija High Grade Gold-Silver-Copper-Lead-Zinc Mineralisation”



## Maiden Reverse Circulation Drilling Program

The Company has received assay results for its first round of drilling completed within the Bobija Mine area. The Phase 1 drill program comprised 11 drill holes for a total of 816 drilled metres, with an average hole depth of 78 metres per hole<sup>(2)</sup>.

The drilling was planned to both test zones of known sulphide/barite mineralisation defined in historical underground development from the 1960's and 70's, and, as step-out drilling designed to test for extension to mineralisation beyond the previously interpreted Central, West and North Zone mineralised zone boundaries (Figure 2).

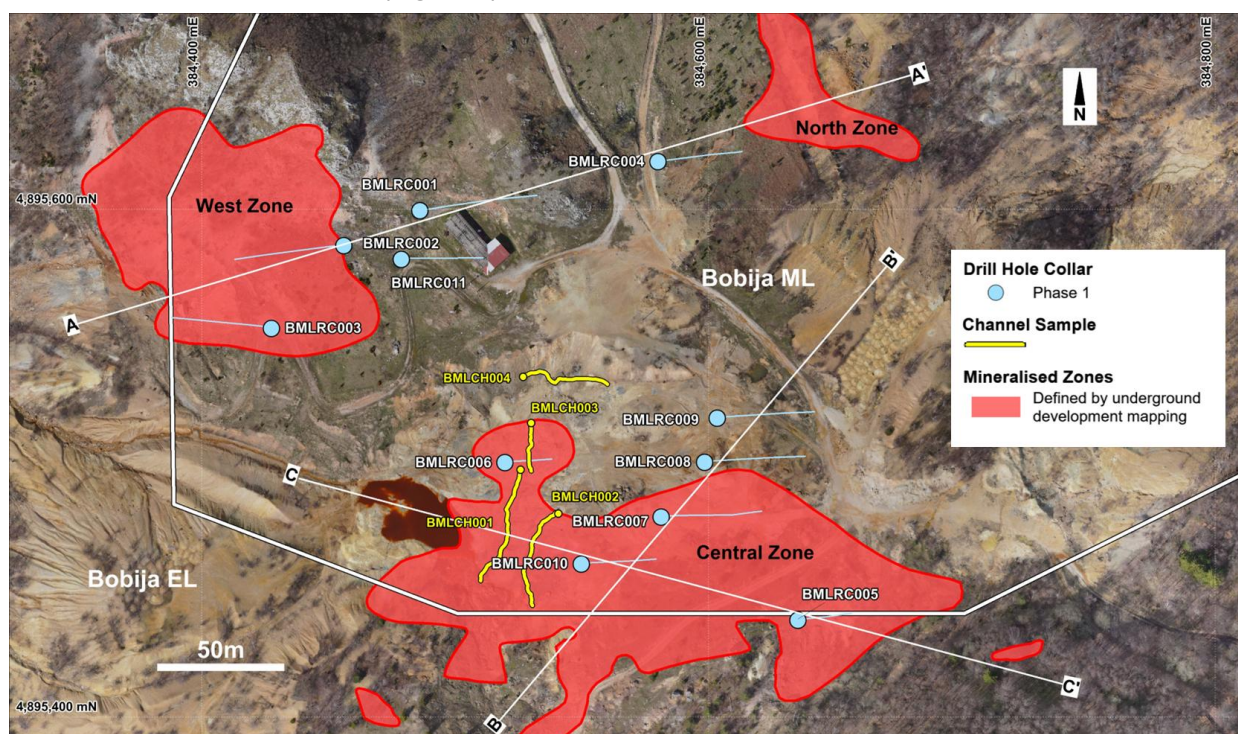


Figure 2: Plan view of Bobija Mine area showing location of phase 1 drill holes, channel samples, mineralised zones defined in historic underground mapping and schematic cross sections (refer figure 3)

Significant gold, silver +/- base metal mineralisation was recorded across all areas drilled:

- Drilling **between the West and North Zones**, an area that was previously interpreted as barren, recorded a substantial, thick zone of mineralisation indicating likely continuity of the mineralisation horizon across the entire area between West Zone and North Zone. In this area drill hole BMLRC001 recorded **52m @ 1.17g/t Au, 26g/t Ag and 1.01% Zn** from 9m downhole depth (Figure 2).
- Drilling **in the Central Zone** (drill holes BMLRC008 and 009) extended known mineralisation to the north of the current Central Zone boundary. In this area drill hole BMLRC008 recorded **23m @ 1.15g/t Au, 21g/t Ag, 0.67% Pb & 0.40% Zn** from 4m depth (Figure 2).
- Drilling at the southern boundary of the Bobija Mining Licence (within the southern section of the **Central Zone**) also recorded significant open-ended mineralisation including **23m @ 1.12g/t Au, 51g/t Ag, 0.20% Cu, 1.17%Pb & 1.94% Zn** (from 9m depth) in drill hole BMLRC005, the most southern hole drilled in the Phase 1 program (Figure 2).

<sup>2</sup> Excludes drill hole BMLRC006 suspended at 36m depth due to water.

The drilling results strongly support the Company's interpretation that the mineralised horizon at Bobija extends across the entire footprint of the current mine area, measuring ~300m x ~300m. Results also support the results of the channel sampling program which showed a strong association of gold and silver with the previously recognised base metal mineralisation at Bobija.

### Thick Gold Intersections Recorded Between the West and North Mineralised Zones

Historical interpretation of underground development in the Bobija Mine defined mineralisation in three discrete mineralised zones referred to as the Central, West and North Zones (Figure 2).

Bobija drill holes BMLRC001, 004 and 011 targeted the previously interpreted barren area between the West Zone and North Zone of mineralisation (Figure 2) and recorded significant intervals of gold mineralisation in particular drill hole BMLRC001 that intersected **52m @ 1.17g/t Au, 26g/t Ag and 1.01% Zn** from 9m downhole depth (Figure 3).

These new drilling results suggest continuity of mineralisation between the West and North Zones, and further support the Company's proposition that gold-silver+/-base metal mineralisation at Bobija is developed in a large sub-horizontal layer that is broadly continuous across the entire mine area.

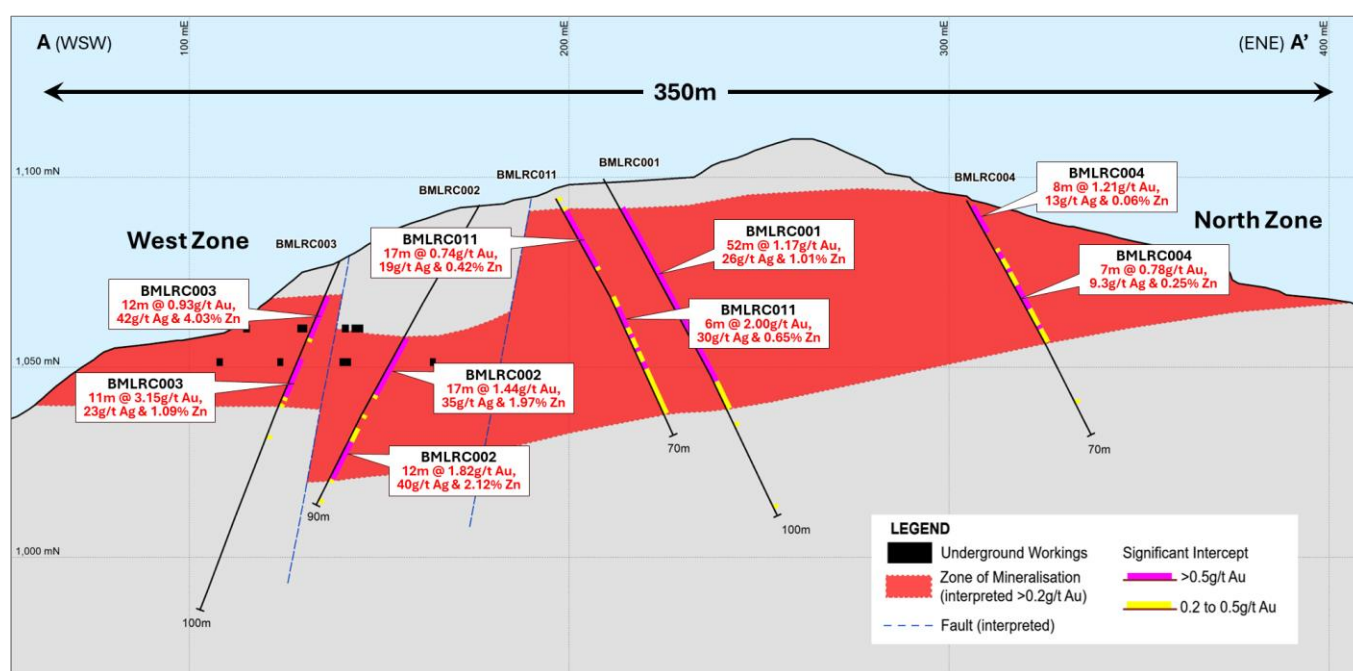


Figure 3: Bobija mine area - Schematic cross section AA' (viewed to NNW) – showing location of phase 1 drill holes and significant intercepts.

## Mineralisation Extended to the North of the Historic “Central Zone” Mineralisation

Drilling in the central pit area (drill holes BMLRC008 and 009) was designed to test for potential northern extensions to mineralisation for the Central Zone area (Figure 2).

Both holes recorded wide mineralised intercepts, confirming an open-ended extension of mineralisation beyond the limit of the currently interpreted Central Zone boundary (Figure 4), assay results in this area included:

- **BMLRC008 - 23m @ 1.15g/t Au, 21g/t Ag, 0.67% Pb & 0.40% Zn (from 4m)**
  - incl. 8m @ 2.12g/t Au, 35g/t Ag, 1.27% Pb (from 8m)
- **BMLRC008 - 6m @ 1.89g/t Au, 9g/t Ag, 0.36% Pb & 1.06% Zn (from 40m)**
- **BMLRC009 - 16m @ 0.94g/t Au, 12g/t Ag, 0.28 Pb & 0.43% Zn (5m)**

Together with drill holes BMLRC007 and BMLRC010, the above drill holes define a contiguous block of mineralisation up to 40m thick and extending for an interpreted 150m in the plane of the cross section (Figure 4).

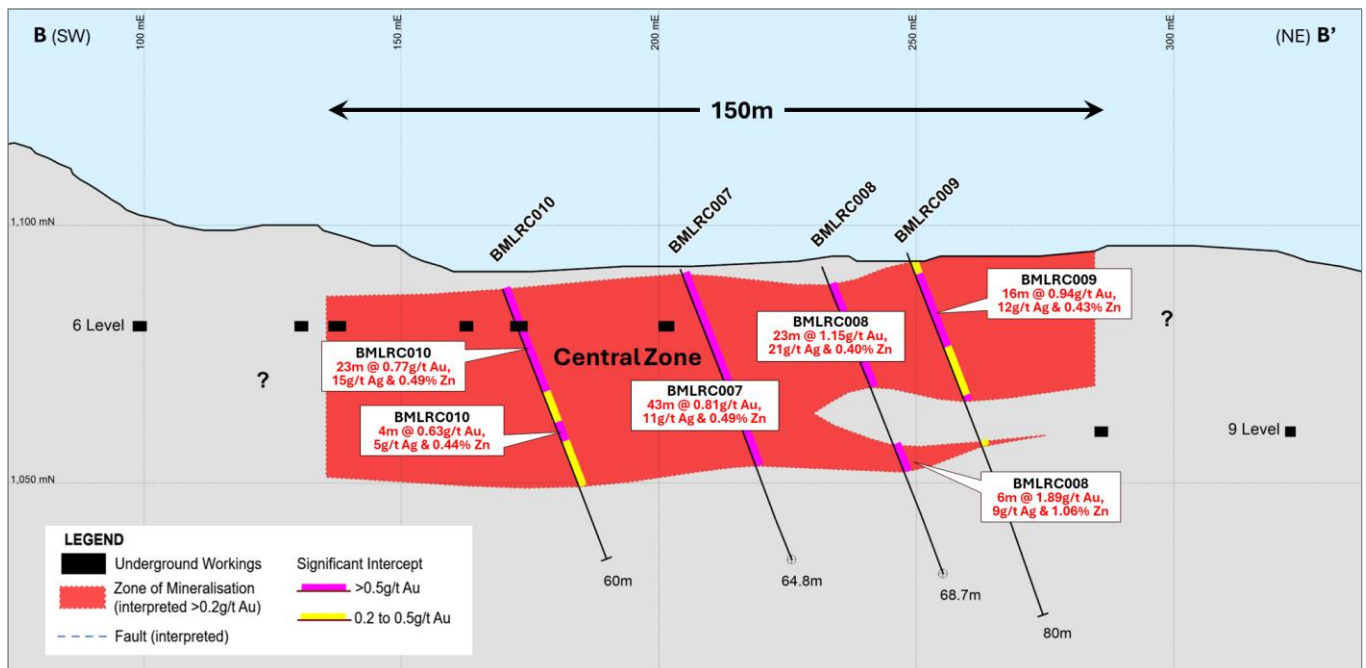


Figure 4: Bobija Mine area - Schematic cross section B-B' (viewed to NW) – showing location of phase 1 drill holes and significant drill intercepts.

## Gold-Silver-Base Metal Mineralisation Recorded at the Southern Limit of MDI Drilling

Drill holes BMLRC005, BMLRC006, BMLRC007 and BMLRC010 were collared close to the southern boundary of the Bobija Mining Licence (ML) to test the continuity of mineralisation within the historically defined Central Zone of mineralisation (Figure 2).

Drill hole BMLRC005, the southernmost hole drilled by MDI, recorded significant near-surface mineralisation with individual 1m assay results up to 3.47g/t Au, 171g/t Ag, 0.67% Cu, 4.14% Pb and 7.80% Zn and an aggregate intersection that included:

- **BMLRC005 - 23m @ 1.12g/t Au, 51g/t Ag, 0.20% Cu, 1.17%Pb & 1.94% Zn (from 9m)**
  - **including 10m @ 1.57g/t Au, 98g/t Ag, 0.42% Cu, 2.55%Pb & 4.01% Zn (from 11m)**

The mineralisation recorded in BMLRC005 is interpreted to be contiguous with mineralisation recorded in channel sampling recently announced from the Bobija Open mine. The drill assay results in BMLRC005 suggest that mineralisation within the cross section may extend for more than 280m (Figure 5). The previously reported **channel sample** assay results in this area<sup>(3)</sup> included:

- **BMLCH001 - 46m @ 1.07g/t Au, 92g/t Ag, 0.57% Cu, 2.08% Pb & 2.03% Zn**
- **BMLCH002 - 47m @ 1.90g/t Au, 229g/t Ag, 0.56% Cu, 2.18% Pb & 2.99% Zn**
- **BMLCH003 - 21.0m @ 0.63g/t Au, 36.5g/t Ag, 0.08% Cu, 1.43% Pb & 0.49% Zn**
- **BMLCH004 - 38.0m @ 1.78g/t Au, 119.1g/t Ag, 0.23% Cu, 2.73% Pb & 2.73% Zn**

Assay results for all Phase 1 drill holes completed in this area include:

- **BMLRC005 - 23m @ 1.12g/t Au, 51g/t Ag, 0.20% Cu, 1.17% Pb & 1.94% Zn (from 9m)**
  - **incl. 10m @ 1.57g/t Au, 98g/t Ag, 0.42% Cu, 2.55% Pb & 4.01% Zn (from 11m)**
- **BMLRC006 - 3m @ 0.99g/t Au, 18g/t Ag, 0.22% Pb & 0.48% Zn (from 27m) <sup>(4)</sup>**
- **BMLRC007 - 43m @ 0.81g/t Au, 11g/t Ag & 0.49% Zn (1m)**
- **BMLRC0010 - 23m @ 0.77g/t Au, 15g/t Ag & 0.49% Zn (from surface), and  
- 4m @ 0.63g/t Au, 5g/t Ag & 0.44% Zn (from 30m)**

Drill hole BMLRC006 was terminated at 36m due to excessive groundwater and sample collection was suspended in this hole at 33m depth.

<sup>3</sup> Refer MDI ASX announcement “Channel Sampling Confirms Bobija High Grade Gold-Silver-Copper-Lead-Zinc Mineralisation” dated 12 November 2025.

<sup>4</sup> Drill hole BMLRC006 was terminated at 36m due to excessive groundwater. Sample collection was suspended in this hole at 33m depth.



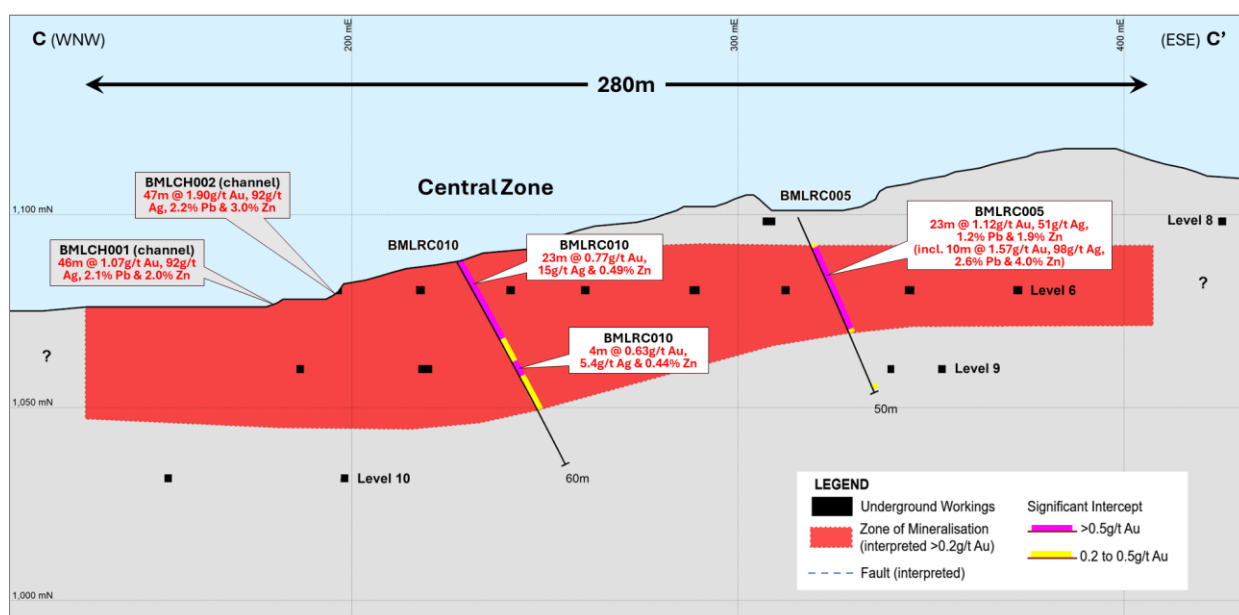


Figure 5: Bobija Mine area - Schematic cross section C-C' (viewed to NNE) – showing location of phase 1 drill holes, oblique channel samples and significant drill intercepts.<sup>(5)</sup>

## Next Steps

The Company is greatly encouraged by the drill assay results received to date, particularly in reference to the potential to define a mineralised horizon that extends across the entire footprint of the current mine area (approximately 300m x 300m in area).

Planning is actively underway to define collar locations for phase 2 drilling. This drilling may include diamond core drilling to support enhanced interpretation of lithologies and controls on the distribution of mineralisation.

The Company also awaits final barium assay results for the Phase 1 drilling program. Approximately 10% of the Phase 1 drill samples recorded barium assay results above the upper detection limit of 1.0% Ba. These samples have been sent to the SGS laboratory in Turkey for XRF analysis using a higher detection limit.

## Results Pending

The Company awaits assay results for a significant amount of exploration activity completed in prior months. These exploration programs include:

- |                         |   |  |
|-------------------------|---|--|
| • <b>Bobija Project</b> | Bobija ML/ EL<br>Bobija East EL<br>Kamenita Kosa EL | Barium assay results from Phase1 RC drilling<br>Soil sampling (polymetallic targets)<br>Soil sampling (copper targets) |
| • <b>Priboj Project</b> | Priboj EL<br>Ober EL                                | Soil and rock chip sampling (copper targets)<br>Soil sampling (gold targets)   |
| • <b>Timok Project</b>  | Brodica EL  | Soil sampling (gold targets)   |

<sup>5</sup> Refer MDI ASX announcement “Channel Sampling Confirms Bobija High Grade Gold-Silver-Copper-Lead-Zinc Mineralisation” dated 12 November 2025.

Cut-off	Hole ID	From	To	Length	Au g/t	Ag g/t	Cu %	Pb %	Zn %	BaSO <sub>4</sub> %
0.5g/t Au	<b>BMLRC001</b>	9.0	61.0	<b>52.0</b>	<b>1.17</b>	26.0	0.12	0.39	1.01	pending
1.0g/t Au	including	9.0	19.0	<b>10.0</b>	<b>2.18</b>	47.2	0.14	0.76	0.73	pending
0.5g/t Au	<b>BMLRC002</b>	40.0	57.0	<b>17.0</b>	<b>1.44</b>	34.6	0.18	0.49	1.97	pending
1.0g/t Au	including	41.0	53.0	<b>12.0</b>	<b>1.82</b>	40.3	0.19	0.54	2.12	pending
0.5g/t Au	<b>BMLRC002</b>	71.0	82.0	<b>11.0</b>	<b>1.14</b>	52.1	0.24	1.19	1.56	pending
1.0g/t Au	including	78.0	82.0	<b>4.0</b>	<b>1.83</b>	118.8	0.55	2.66	2.86	pending
0.5g/t Au	<b>BMLRC003</b>	10.0	22.0	<b>12.0</b>	<b>0.93</b>	42.2	0.31	0.66	4.03	pending
0.5g/t Au	"	28.0	39.0	<b>11.0</b>	<b>3.15</b>	22.6	0.10	0.57	1.09	pending
1.0g/t Au	including	28.0	36.0	<b>8.0</b>	<b>4.03</b>	24.8	0.12	0.68	1.41	pending
0.5g/t Au	<b>BMLRC004</b>	2.0	10.0	<b>8.0</b>	<b>1.21</b>	12.5	0.01	0.44	0.06	pending
0.5g/t Au	"	26.0	33.0	<b>7.0</b>	<b>0.78</b>	9.3	0.08	0.08	0.25	pending
0.5g/t Au	<b>BMLRC005</b>	9.0	32.0	<b>23.0</b>	<b>1.12</b>	50.6	0.20	1.17	1.94	pending
1.0g/t Au	including	11.0	21.0	<b>10.0</b>	<b>1.57</b>	98.3	0.42	2.55	4.01	pending
0.5g/t Au	<b>BMLRC006</b>	27.0	30.0	<b>3.0</b>	<b>0.99</b>	17.6	0.08	0.22	0.48	pending
0.5g/t Au	<b>BMLRC007</b>	1.0	44.0	<b>43.0</b>	<b>0.81</b>	10.9	0.06	0.09	0.49	pending
0.5g/t Au	<b>BMLRC008</b>	4.0	27.0	<b>23.0</b>	<b>1.15</b>	20.6	0.14	0.67	0.40	pending
1.0g/t Au	including	8.0	16.0	<b>8.0</b>	<b>2.12</b>	35.3	0.18	1.27	0.08	pending
0.5g/t Au	<b>BMLRC008</b>	40.0	46.0	<b>6.0</b>	<b>1.89</b>	9.4	0.13	0.36	1.06	pending
0.5g/t Au	<b>BMLRC009</b>	5.0	21.0	<b>16.0</b>	<b>0.94</b>	11.6	0.08	0.28	0.43	pending
0.5g/t Au	<b>BMLRC010</b>	0.0	23.0	<b>23.0</b>	<b>0.77</b>	15.4	0.09	0.12	0.49	pending
0.5g/t Au	"	30.0	34.0	<b>4.0</b>	<b>0.63</b>	5.4	0.01	0.07	0.44	pending
0.5g/t Au	<b>BMLRC011</b>	4.0	21.0	<b>17.0</b>	<b>0.74</b>	18.8	0.22	0.35	0.42	pending
0.5g/t Au	"	33.0	39.0	<b>6.00</b>	<b>2.00</b>	30.0	0.15	0.67	0.65	pending

Table 1: Summary of significant Bobija Project drill intersections (3m maximum dilution applied).



## RELEASE AUTHORISED BY THE MDI BOARD:

**Daniel Raihani**

Non-Executive Chairman

[info@middleisland.com.au](mailto:info@middleisland.com.au)

**Alex Cowie**

Investor & Media Relations

[alexc@nwrcommunications.com.au](mailto:alexc@nwrcommunications.com.au)

### Forward Looking Statements

Statements contained in this release, particularly those regarding possible or assumed future performance, costs, dividends, production levels or rates, prices, resources, reserves or potential growth of Middle Island, industry growth or other trend projections are, or may be, forward looking statements. Such statements relate to future events and expectations and, as such, involve known and unknown risks and uncertainties. Actual results and developments may differ materially from those expressed or implied by these forward-looking statements depending on a variety of factors.

### Competent Persons Statement

The information in this announcement that relates to Exploration Results is based on, and fairly represents, information compiled by Mr Peter Spiers, a Competent Person who is a Member of the Australian Institute of Geoscientists and a full-time employee of the Company. Mr Spiers has sufficient experience that is relevant to the style of mineralisation and type of deposit under consideration and to the activity being undertaken to qualify as a Competent Person as defined in the 2012 Edition of the 'Australasian Code for Reporting of Exploration Results, Mineral Resources and Ore Reserves'. Mr Spiers consents to the inclusion in the announcement of the matters based on his information in the form and context in which it appears. The Exploration Targets described in the announcement are conceptual in nature and there is insufficient information to establish whether further exploration will result in the determination of Mineral Resources.

## About Middle Island Resources (ASX:MDI)

Middle Island Resources recently acquired a portfolio of exploration projects located in the Western Tethyan Mineral Province, Serbia, that are highly prospective for the discovery of gold and base metal deposits.

The Western Tethyan Mineral Province is a world class geological setting containing giant copper, gold and silver deposits, including, Zijin Mining's Cukaru Peki project (22.6Mt Cu and 17.1 Moz Au) and recent Malka Golaja discovery (~150Mt @ 1.9% Cu and 0.6g/t Au), DPM Metals' Vares project (20.9Mt @ 1.1g/t Au, 153g/t Ag, 0.4% Cu, 2.8% Pb & 4.3% Zn), DPM Metals' Coka Rakita project (7.3Mt @ 6.44g/t for 1.5Moz Au) and Rio Tinto's Jadar project (139Mt @ 14.7% B<sub>2</sub>O<sub>3</sub> & 1.8% Li<sub>2</sub>O). BHP is also active in the country under an earn-in agreement with Mundoro Capital Inc.<sup>(6)</sup>

The Company's Serbian exploration portfolio comprises 14 licences either 100%-owned or held under agreements with a path to 100% ownership, covers approximately 620km<sup>2</sup>, and encompasses the Bobija, Timok and Priboj project areas (refer Figure 6).



Figure 6: Location of Konstantin projects within world class mineral province.

<sup>6</sup> Source documents:

- Adriatic Metals plc corporate presentation (19 May 2025) – Rupice Indicated plus Inferred Mineral Resources.
- RioTinto announcement - "Rio declares maiden Ore Reserve at Jadar" (10 Dec. 2020) - Jadar total Indicated and Inferred Mineral Resource.
- Strickland Metals announcements – "1.2Moz @ 3.0g/t Gold in Maiden Gradina Mineral Resource Estimate" (26 Aug 2025) – Total Inferred Mineral Resource, and "Completion of Zijin Mining Strategic Placement" (23 April 2025).
- DPM Precious Metals company announcement (26 Nov. 2025) – "DPM Metals Announces Robust Feasibility Study Results for the Coka Rakita Project with \$782M of NPV<sub>5</sub> and 36% IRR" - Total Mineral Reserve.
- Zijin Mining 2024 Annual Report (23 Mar 2025) – Cukaru Peki total Measured, Indicated and Inferred Mineral Resource. Zijin Mining presentation (21 Aug. 2023), Zijin Mining press release (13 Sept. 2023) – "US\$3.8B expansion of Cukaru Peki mine".
- Zijin Mining 2024 Annual Report (23 Mar 2025) - Malka Golaja – reported JORC compliant resource, no category specified.

## About the Bobija Project

The Bobija Project is located in central-western Serbia about 100 km southwest of Belgrade. The project comprises six mineral licences with a total area of 208km<sup>2</sup>. Three exploration licences are already granted (Bobija, Bobija East and Kamenita Kosa), and an application has been submitted for a fourth licence (Orovica). Konstantin also holds a 10-year option to acquire two granted mining licences (Bobija and Tisovik ML's) from a local company, Bobija doo Ljubovija (refer Figure 7).

MDI's initial focus in the project area is the Bobija mine area (Bobija ML), where barite-sulphide mineralisation is exposed in the floor of the historic open pit mine. Historic exploration in the Bobija Mine area has included exploratory underground development by the former Government of Yugoslavia, as well as several phases of exploration drilling completed between the 1960's and 1980's which targeted barium, lead, zinc +/- silver.

In 2014 – 2017 Reservoir Minerals and Nevsun Resources completed minor drilling in the Bobija Mine area and were the first groups to assay for gold. Drilling recorded significant flat-lying near-surface polymetallic (barite-sulphide) mineralisation hosted in Triassic sediments and demonstrated the potential for significant gold and silver associated with the base metal mineralisation.

The Bobija deposit and surrounding region remains inadequately explored and offers potential for the delineation of significant polymetallic (gold-silver-copper-lead-zinc) mineralisation through the application of a comprehensive and systematic exploration program. Furthermore, the full extent of the gold mineralisation within the deposit is yet to be fully quantified with gold potentially representing a very significant component of this polymetallic deposit.

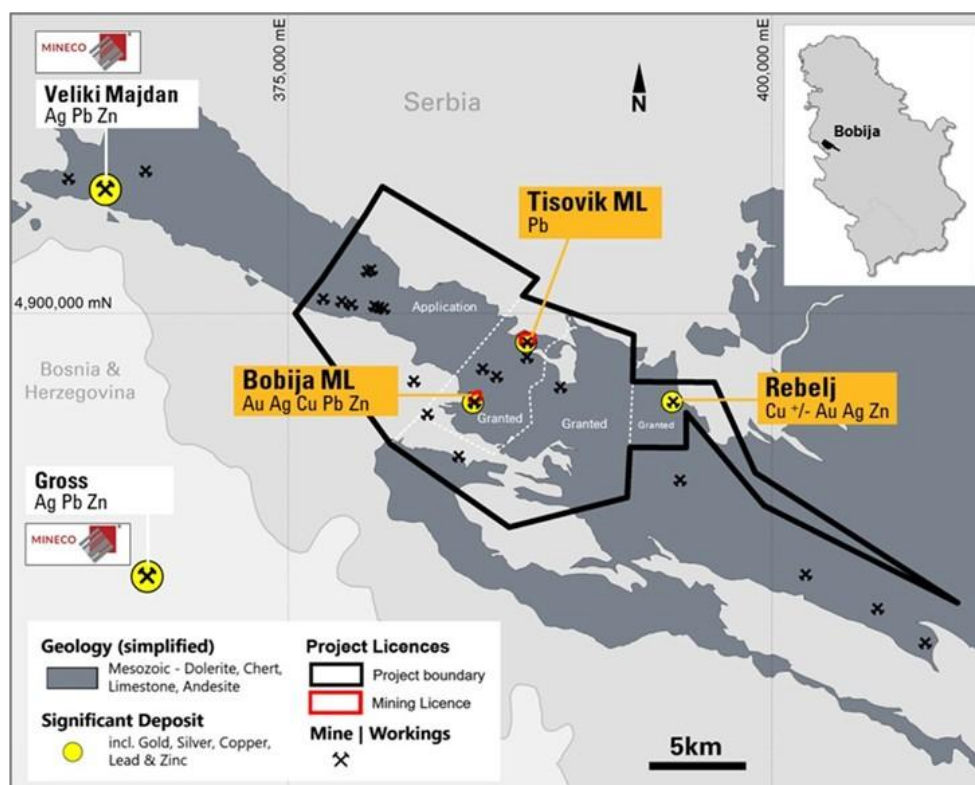


Figure 7: Location of Bobija Project licences.

## Appendix 1 – JORC Code, 2012 Edition Table 1 – BOBIJA PROJECT

### Section 1 Sampling Techniques and Data (Criteria in this section apply to all succeeding sections)

Criteria	JORC Code explanation	Commentary
<b>Sampling techniques</b>	<ul style="list-style-type: none"> <li>Nature and quality of sampling (e.g. cut channels, random chips, or specific specialised industry standard measurement tools appropriate to the minerals under investigation, such as down hole gamma sondes, or handheld XRF instruments, etc.). These examples should not be taken as limiting the broad meaning of sampling.</li> <li>Include reference to measures taken to ensure sample representivity and the appropriate calibration of any measurement tools or systems used.</li> <li>Aspects of the determination of mineralisation that are Material to the Public Report.</li> <li>In cases where ‘industry standard’ work has been done this would be relatively simple (eg ‘reverse circulation drilling was used to obtain 1 m samples from which 3 kg was pulverised to produce a 30 g charge for fire assay’). In other cases more explanation may be required, such as where there is coarse gold that has inherent sampling problems. Unusual commodities or mineralisation types (eg submarine nodules) may warrant disclosure of detailed information.</li> </ul>	<p>This table relates to all reported exploration work completed to date within the Bobija Project area including historical third-party exploration and exploration completed by Middle Island Resources Ltd (the “Company” or “Middle Island”). Exploration results attributed to the Company include exploration completed by its Serbian subsidiary Konstantin Resources doo.</p> <p><i>Historical:</i></p> <ul style="list-style-type: none"> <li>Historical exploration work reported from the Bobija Project has included mapping, soil sampling, rock chip sampling, geophysical surveys (gravity), underground development, underground face sampling and diamond drilling.</li> <li>Historical exploration has been completed by former Government-owned entities including RMHK Trepca and Geozavod (Government), Mineco Limited (Mineco), and by Balkan Exploration and Mining doo, a Serbian-registered company that was held under the successive ownership of Reservoir Minerals (Reservoir), Nevsun Resources (Nevsun) and Zijin Mining Group (Zijin).</li> <li>The sampling methodology applied to historic samples is generally unknown other than as described in subsequent sections of this table.</li> <li><i>Soil sampling:</i> Historic soil sampling was reported by Nevsun in 2017, however no results are available.</li> <li><i>Rock chip (channel) sampling:</i> a single historical rock chip sample is reported from the Bobija Project area:</li> <li>Reservoir: 1x 6m channel sample (2012)</li> <li><i>Geophysics:</i> historical geophysical surveys recorded from the Bobija Project area include:</li> <li>Gravity: 0.45km<sup>2</sup> area (Reservoir, 2014)</li> <li><i>Underground development:</i> More than 9km of historical underground development is recorded from the Bobija Project area from the Bobija, Tisovik and Rebelj mines.</li> <li><i>Underground channel sampling:</i> 546 historical underground channel/face samples are recorded from historic mines and workings in the Bobija Project area including the Bobija, Tisovik and Rebelj mines.</li> <li><i>Drilling:</i> 77 historical diamond drill holes are recorded from the Bobija Project area including:</li> <li>Government: 54 holes for 4,036.50m (1964-88)</li> <li>Reservoir: 8 holes for 622.90m (2014)</li> <li>Nevsun: 15 holes for 1,632.00m (2016/17)</li> </ul> <p><i>Middle Island:</i></p> <ul style="list-style-type: none"> <li><i>Stream sediment sampling:</i> 198 samples were collected in 2024 on a typical 1km<sup>2</sup> drainage area basis. A nominal 3kg sample was collected from active drainage system and sieved on site to -1mm prior to submission to the laboratory. The entire laboratory sample is sieved to -80# mesh to produce a 250g subsample and 30g charge for fire assay and ICP-MS finish (FAM303) and multi-element analysis by 4-acid digestion with ICP-MS finish (IMS40B).</li> <li><i>Soil sampling:</i> Soil sampling programs are planned for completion in late 2025 totalling approximately 420 samples from the Bobija, Bobija East and Kamenita Kosa exploration licences. Typically, the top 10 cm of cover material will be removed and a 2-3kg sample collected from the B/C horizon for submission to the laboratory. The entire sample will be pulverized to produce a 250g subsample and a 50g charge for fire assay and ICP-MS finish (FAM505) and multi-element analysis by 4-acid digestion with ICP-MS finish (IMS40B).</li> </ul>



Criteria	JORC Code explanation	Commentary
		<ul style="list-style-type: none"> <li>• <i>Rock chip sampling</i>: 68 samples were collected between 2023-25 from outcrop, sub-crop, float material and stockpiles. Sample weight was typically 2-3kg and samples were submitted to the laboratory in whole. Laboratory samples were crushed and pulverised to produce 250g pulps and a 50g charge for fire assay with atomic absorption finish (FAA505) and multi-element analysis by four-acid digestion with ICP-MS finish (IMS40B).</li> <li>• <i>Rock chip (channel) samples</i>: 163 samples were collected in 2025 (including 6 field duplicates) from outcrop in the Bobija Open Pit. Samples were cut using a diamond saw blade with an approximate 10cm x 10cm continuous sample taken from the rock face. Samples were submitted to the laboratory in whole. Laboratory samples were crushed and pulverised to produce 250g pulps and a 50g charge for fire assay with atomic absorption finish (FAA505) and multi-element analysis by four-acid digestion with ICP-MS finish (IMS40B). Over range Cu, Pb and Zn (&gt;10,000ppm) and Ag (&gt;10ppm) are re-analysed using a standard ore grade method utilising a four-acid digest with ICP-AES finish (AAS42S). The exploration results reported in this announcement relate to the rock chip channel samples.</li> <li>• <i>Drilling</i>: an 816m reverse circulation (RC) drilling program was completed in the Bobija Mine area in late 2025. RC drill samples (drill chips) were collected from the drill rig at 1m intervals and riffle split to provide a 4-6kg sub-sample for submission to the laboratory. Laboratory samples were crushed and pulverised to produce 250g pulps and a 50g charge for fire assay with atomic absorption finish (FAA505) and multi-element analysis by four-acid digestion with ICP-MS finish (IMS40B). Over range Cu, Pb and Zn (&gt;10,000ppm) and Ag (&gt;10ppm) are re-analysed using a standard ore grade method utilising a four-acid digest with ICP-AES finish (AAS42S).</li> </ul>
<b>Drilling techniques</b>	<ul style="list-style-type: none"> <li>• Drill type (e.g. core, reverse circulation, open-hole hammer, rotary air blast, auger, Bangka, sonic, etc.) and details (e.g. core diameter, triple or standard tube, depth of diamond tails, face-sampling bit or other type, whether core is oriented and if so, by what method, etc.).</li> </ul>	<p><i>Historical:</i></p> <ul style="list-style-type: none"> <li>• Diamond drilling completed in the Bobija Project area between 1964 and 2017 comprised 69 surface diamond drill holes and 8 underground diamond drill holes for more than 6,200m of drilling. Details of the drilling techniques are unknown other than as described below.             <ul style="list-style-type: none"> <li>- <i>Government</i>: completed 46 surface and 8 underground diamond drill holes between 1964 and 1988 focussed on the Bobija and Rebelj deposits for more than 4,000m of drilling. Core size ranged from 116mm (at the collar) reducing to 101mm, 86mm, 76mm, 66mm and 56mm diameters.</li> <li>- <i>Reservoir</i>: completed 8 surface diamond drill holes in 2014 focussed on the Bobija deposit for 622.90m.</li> <li>- <i>Nevsun</i>: completed 15 surface diamond drill holes between 2016 and 2017, focussed on the Bobija deposit, for 1,632.00m.</li> </ul> </li> </ul> <p><i>Middle Island:</i></p> <ul style="list-style-type: none"> <li>• Reverse circulation drilling was carried out by a Serbian contractor using a Gemsa multipurpose (MP85H) drill rig with a downhole hammer and 129mm face sampling drill bit.</li> <li>• All collars are lined with a 6m casing of PVC pipe.</li> </ul>
<b>Drill sample recovery</b>	<ul style="list-style-type: none"> <li>• Method of recording and assessing core and chip sample recoveries and results assessed.</li> </ul>	<p><i>Historical:</i></p> <ul style="list-style-type: none"> <li>• No methods are recorded for historical drilling other than as described below.             <ul style="list-style-type: none"> <li>- <i>Government</i>: drill core recoveries were recorded for each drill hole. Recoveries were poor and averaged 78% for available drill holes.</li> </ul> </li> </ul>

Criteria	JORC Code explanation	Commentary
		<p>- <i>Reservoir Minerals</i>: Core recovery through the reported mineralised intervals was generally 100%.</p> <p><i>Middle Island</i>:</p> <ul style="list-style-type: none"> <li>Each bag of RC drill chips is weighed at the drill site using electronic scales. Sample weights are monitored during drilling for consistency using expected weights based on drilling equipment and rock types.</li> <li>Sample weights are statistically evaluated for each drillhole.</li> </ul>
	<ul style="list-style-type: none"> <li>Measures taken to maximise sample recovery and ensure representative nature of the samples.</li> </ul>	<p><i>Historical</i>:</p> <ul style="list-style-type: none"> <li>No measures are recorded for historical drilling.</li> </ul> <p><i>Middle Island</i>:</p> <ul style="list-style-type: none"> <li>To enhance RC sample recovery, and where possible, to ensure sampling under dry conditions, a 1250 cfm compressor and additional 870 psi booster are used for RC drilling.</li> <li>At every rod change compressed air blow-downs are used for cleaning and conditioning the hole before drilling resumes.</li> <li>The sample collection cyclone is cleaned at each rod change and after a wet sample. A compressed air line from the drill rig is available for cleaning the cyclone and sample splitter.</li> </ul>
	<ul style="list-style-type: none"> <li>Whether a relationship exists between sample recovery and grade and whether sample bias may have occurred due to preferential loss/gain of fine/coarse material.</li> </ul>	<p><i>Historical</i>:</p> <ul style="list-style-type: none"> <li>No assessment of a relationship has been recorded for historical drill samples.</li> </ul> <p><i>Middle Island</i>:</p> <ul style="list-style-type: none"> <li>No relationship has been identified between sample recovery and grade.</li> </ul>
<b>Logging</b>	<ul style="list-style-type: none"> <li>Whether core and chip samples have been geologically and geotechnically logged to a level of detail to support appropriate Mineral Resource estimation, mining studies and metallurgical studies.</li> </ul>	<p><i>Historical</i>:</p> <ul style="list-style-type: none"> <li>Logging of drilling completed before 2014 is not considered suitable for Mineral Resource estimation.</li> <li>Geological logging of diamond drill core completed after 2014 (Reservoir and Nevsun) is considered suitable for Mineral Resource estimation.</li> <li>No geotechnical or metallurgical logging of historic diamond drill core is recorded.</li> </ul> <p><i>Middle Island</i>:</p> <ul style="list-style-type: none"> <li>RC chip samples are geologically logged by an experienced geologist. The level of detail captured in logging is considered sufficient to support an appropriate Mineral Resource estimate.</li> <li>Geological details including lithology, oxidation state, alteration minerals and, where relevant, structure are recorded for rock chip (including channel) samples.</li> <li>Geotechnical logging is not undertaken for RC drill samples or rock chip / channel samples.</li> </ul>
	<ul style="list-style-type: none"> <li>Whether logging is qualitative or quantitative in nature. Core (or costean, channel, etc.) photography.</li> </ul>	<p><i>Historical</i>:</p> <ul style="list-style-type: none"> <li>No description of logging methodology is recorded for historical drilling other than as described below.</li> <li>Logging by the Government and Reservoir was based on qualitative identification of geological characteristics including lithology, alteration, weathering, and structural features.</li> </ul> <p><i>Middle Island</i>:</p> <ul style="list-style-type: none"> <li>Logging is based on qualitative identification of geological characteristics including lithology, alteration, degree of oxidation, and intensity of foliation. Semi-quantitative estimates are made of mineral abundance including sulphide abundance and quartz veining.</li> <li>A sample of RC chips is washed and retained in chip trays marked with hole number and down hole interval.</li> </ul>

Criteria	JORC Code explanation	Commentary
		<ul style="list-style-type: none"> <li>A digital photographic record of chip trays is maintained for all RC drill samples.</li> </ul>
	<ul style="list-style-type: none"> <li>The total length and percentage of the relevant intersections logged.</li> </ul>	<p><i>Historical:</i></p> <ul style="list-style-type: none"> <li>Historic drill logs reported by the Government and Reservoir, indicate that drill holes were logged along the entire length of the hole.</li> </ul> <p><i>Middle Island:</i></p> <ul style="list-style-type: none"> <li>All drill metres are logged.</li> <li>Geological details for all rock chip and channel samples are recorded.</li> </ul>
<b>Sub-sampling techniques and sample preparation</b>	<ul style="list-style-type: none"> <li>If core, whether cut or sawn and whether quarter, half or all core taken.</li> </ul>	<p><i>Historical:</i></p> <ul style="list-style-type: none"> <li>No information has been located regarding sampling methodology used for historical diamond drill core.</li> </ul> <p><i>Middle Island:</i></p> <ul style="list-style-type: none"> <li>The Company has not completed any diamond core drilling within the Bobija Project area.</li> </ul>
	<ul style="list-style-type: none"> <li>If non-core, whether riffled, tube sampled, rotary split, etc. and whether sampled wet or dry.</li> </ul>	<p><i>Historical:</i></p> <ul style="list-style-type: none"> <li>No historical non-core drill holes are recorded.</li> </ul> <p><i>Middle Island:</i></p> <ul style="list-style-type: none"> <li>Reverse circulation drill samples are riffle split to produce nominal 4-6kg sub-samples for submission to the laboratory. Splitting is applied to individual 1m samples utilising a rig-mounted triple-tier riffle splitter.</li> <li>The splitting method and sub-sample weight is recorded for each sample.</li> <li>No sub-sampling is undertaken for rock chip / channel sampling.</li> </ul>
	<ul style="list-style-type: none"> <li>For all sample types, the nature, quality and appropriateness of the sample preparation technique.</li> </ul>	<p><i>Historical:</i></p> <ul style="list-style-type: none"> <li>No historical sample preparation techniques are recorded for historical diamond drill core samples.</li> </ul> <p><i>Middle Island:</i></p> <ul style="list-style-type: none"> <li>Riffle splitting of RC drill chip samples, to produce a nominal 4-6kg sub-sample, is considered an appropriate sample preparation technique given the expected heterogeneity of the primary sample and the style of mineralisation being sampled.</li> <li>Other than RC drill samples, as described above, no other sample types are subject to sub-sampling or sample preparation by the Company.</li> <li>All primary stream sediment, soil and rock chip and channel samples collected by the Company are submitted in whole to the analytical laboratory for analysis.</li> <li>The laboratory uses industry standard techniques, as described below, to prepare samples for analysis.</li> </ul>
	<ul style="list-style-type: none"> <li>Quality control procedures adopted for all sub-sampling stages to maximise representivity of samples.</li> </ul>	<p><i>Historical:</i></p> <ul style="list-style-type: none"> <li>No procedures are recorded for historical core sampling.</li> </ul> <p><i>Middle Island:</i></p> <ul style="list-style-type: none"> <li>All RC drill chip samples are riffle spit to produce sub-samples for submission to the laboratory.</li> <li>The riffle splitter is cleaned with compressed air and/or bottle brushes after each rod change to reduce cross sample contamination.</li> <li>No other sample types collected by the Company are subject to sub-sampling or sample preparation prior to submission to the laboratory including stream, soil, rock chip, grab and channel samples.</li> </ul>
	<ul style="list-style-type: none"> <li>Measures taken to ensure that the sampling is representative of the in situ material</li> </ul>	<p><i>Historical:</i></p> <ul style="list-style-type: none"> <li>No measures are recorded for historical samples.</li> </ul>

Criteria	JORC Code explanation	Commentary
	collected, including for instance results for field duplicate/second-half sampling.	<p><i>Middle Island:</i></p> <ul style="list-style-type: none"> <li>Reverse circulation drill sample duplicates (duplicate riffle split samples) are submitted to the laboratory at a frequency of approximately 1 in 20 samples.</li> <li>Soil sample field duplicates are submitted to the laboratory at a frequency of approximately 1 in 20 samples.</li> <li>The Company has not used duplicates in the analysis of rock chip or channel samples.</li> </ul>
	<ul style="list-style-type: none"> <li>Whether sample sizes are appropriate to the grain size of the material being sampled.</li> </ul>	<p><i>Historical:</i></p> <ul style="list-style-type: none"> <li>No assessment is recorded for historical sample data.</li> </ul> <p><i>Middle Island:</i></p> <ul style="list-style-type: none"> <li>The Company has not completed a formal assessment to define the optimal sample size required to determine representative assay results for rock chip or drill hole samples.</li> <li>The sample methods used by the Company are considered industry standard techniques for the type of sampling being undertaken.</li> </ul>
<b>Quality of assay data and laboratory tests</b>	<ul style="list-style-type: none"> <li>The nature, quality and appropriateness of the assaying and laboratory procedures used and whether the technique is considered partial or total.</li> </ul>	<p><i>Historical:</i></p> <ul style="list-style-type: none"> <li>No information has been recorded on historical assay or laboratory procedures other than as described below.</li> <li><i>Rock chip (channel) samples:</i> channel sample assay results reported by Reservoir included assays for Au, Ag, Cu, Pb and Zn. Laboratory protocols are unknown.</li> <li><i>Underground channel samples:</i> assay results from underground face sampling are recorded as follows:</li> <li>No methods are recorded for historical drilling other than as described below.             <ul style="list-style-type: none"> <li>Bobija Mine: 448 samples (46 Ag, 109 Cu, 427 Pb, 428 Zn and 262 BaSO<sub>4</sub> assay results)</li> <li>Tisovik Mine: 61 Pb assay results.</li> <li>Rebelj Mine: 37 Cu assay results.</li> </ul> </li> <li>Drill core samples:</li> <li><i>Reservoir:</i> Drill core samples were crushed to less than 2mm at the Company's sample preparation facility in Belgrade. The crushed samples were submitted to ALS Minerals facilities in Bor, Serbia, for pulverising and analysis for gold by fire assay at the ALS Minerals laboratory in Rosia Montana, Romania, and by multi-element ICP at the ALS Minerals laboratory in Loughrea, Ireland.</li> </ul> <p><i>Middle Island:</i></p> <ul style="list-style-type: none"> <li><i>Stream sediment samples:</i> The entire sample was sieved to -80# mesh to produce a 250g subsample and 30g charge for gold analysis by fire assay with ICP-MS finish (FAM303). An additional 0.25g charge was analysed for 49 elements (Ag, Al, As, Ba, Be, Bi, Ca, Cd, Ce, Co, Cr, Cs, Cu, Fe, Ga, Hf, In, K, La, Li, Lu, Mg, Mn, Mo, Na, Nb, Ni, P, Pb, Rb, S, Sb, Sc, Se, Sn, Sr, Ta, Tb, Te, Th, Ti, Tl, U, V, W, Y, Yb, Zn, Zr) by four-acid digestion with ICP-MS finish (IMS40B).</li> <li><i>Soil samples:</i> Assay results are awaited for 2025 soil sampling in the Bobija Project area. The entire sample will be pulverized to produce a 250g sub-sample and a 50g charge for Au analysis by fire assay with ICP-MS finish (FAM505). An additional 0.25g charge was analysed for 51 elements (Ag, Al, As, Ba, Be, Bi, Ca, Cd, Ce, Co, Cr, Cs, Cu, Fe, Ga, Hf, In, K, La, Li, Lu, Mg, Mn, Mo, Na, Nb, Ni, P, Pb, Pd, Pt, Rb, S, Sb, Sc, Se, Sn, Sr, Ta, Tb, Te, Th, Ti, Tl, U, V, W, Y, Yb, Zn, Zr) by four-acid digestion with ICP-MS finish (IMS40B).</li> <li><i>Drill / Rock Chip and Channel samples:</i> The entire sample is dried at 105°C for a minimum of 12 hours, jaw crushed (P80% 4mm), riffle split as required, then pulverized</li> </ul>



Criteria	JORC Code explanation	Commentary
		<p>(P90% 75µm) to produce 250g pulps and a 50g charge for gold analysis by fire assay with an AAS finish (FAA505). Over range Au samples (&gt;10ppm) are re-analysed from pulps by fire assay and gravimetric finish. An additional 0.25g charge is analysed for 49 elements (Ag, Al, As, Ba, Be, Bi, Ca, Cd, Ce, Co, Cr, Cs, Cu, Fe, Ga, Hf, In, K, La, Li, Lu, Mg, Mn, Mo, Na, Nb, Ni, P, Pb, Rb, S, Sb, Sc, Se, Sn, Sr, Ta, Tb, Te, Th, Ti, Tl, U, V, W, Y, Yb, Zn, Zr) by 4-acid digestion with ICP-MS finish (IMS40B). Sulphur is analysed using an Eltra Analyzer with induction furnace. Over range Cu, Pb and Zn (&gt;10,000ppm) and Ag (&gt;10ppm) is re-analysed using a standard ore grade method utilising a four-acid digest with ICP-AES finish (AAS42S).</p>
	<ul style="list-style-type: none"> <li>For geophysical tools, spectrometers, handheld XRF instruments, etc., the parameters used in determining the analysis including instrument make and model, reading times, calibrations factors applied and their derivation, etc.</li> </ul>	<p><i>Historical:</i></p> <ul style="list-style-type: none"> <li>No use of handheld geophysical tools, spectrometers, XRF instruments or similar devices is recorded for historical exploration.</li> </ul> <p><i>Middle Island:</i></p> <ul style="list-style-type: none"> <li>The Company has not used any handheld geophysical tools, spectrometers, XRF instruments or similar devices to determine chemical composition at a semi-quantitative level of accuracy.</li> </ul>
	<ul style="list-style-type: none"> <li>Nature of quality control procedures adopted (e.g. standards, blanks, duplicates, external laboratory checks) and whether acceptable levels of accuracy (i.e. lack of bias) and precision have been established.</li> </ul>	<p><i>Historical:</i></p> <ul style="list-style-type: none"> <li>No quality control procedures have been recorded for historical exploration other as described below.</li> <li><i>Reservoir (diamond drilling):</i> In addition to the laboratory's internal QAQC procedures, Reservoir conducted its own QAQC with the systematic inclusion of certified reference materials, blanks, and field duplicate samples. Reservoir reported that analytical results from the quality control samples were evaluated and conformed to best practice standards.</li> </ul> <p><i>Middle Island:</i></p> <ul style="list-style-type: none"> <li>All field samples are submitted for assay to an independent and accredited analytical laboratory (SGS Bor, Serbia).</li> <li>Sample blanks are inserted at the start of each drill hole.</li> <li>Certified reference standards are inserted for drill samples at a frequency of 1 in 20 samples.</li> <li>Duplicate samples are submitted for soil sampling at a frequency of 1 in 20 samples.</li> <li>The Company does not use duplicate samples for rock chip sampling.</li> <li>Internal review is undertaken for all assay results. Sample batches are submitted for re-analysis when statistical or spatial inconsistencies are identified.</li> <li>The laboratory applies internal quality control measures including the use of certified reference materials and blanks, and it inserts pulp duplicates on a 1-in-20 basis.</li> <li>Given the early-stage nature of exploration activity, and the nature of the material being sampled, the Company does not currently use sample blanks or standards.</li> <li>No umpire samples are submitted to third party laboratories.</li> </ul>
<b>Verification of sampling and assaying</b>	<ul style="list-style-type: none"> <li>The verification of significant intersections by either independent or alternative company personnel.</li> </ul>	<p><i>Historical:</i></p> <ul style="list-style-type: none"> <li>No information is recorded on the verification of significant historical intersections.</li> </ul> <p><i>Middle Island:</i></p> <ul style="list-style-type: none"> <li>Australian-based Company personnel review qualitative and quantitative drill hole data including drill core/drill chip photographs, drill logs and laboratory assay results and conduct periodic field visits.</li> </ul>
	<ul style="list-style-type: none"> <li>The use of twinned holes.</li> </ul>	<ul style="list-style-type: none"> <li>There has been no known use of twinned holes.</li> </ul>

Criteria	JORC Code explanation	Commentary
	<ul style="list-style-type: none"> <li>Documentation of primary data, data entry procedures, data verification, data storage (physical and electronic) protocols.</li> </ul>	<p><i>Historical:</i></p> <ul style="list-style-type: none"> <li>Data handling and storage procedures are not reported for historical data other than as described below.</li> <li>Drill hole data recorded from diamond drilling by the Government and Reservoir is reported as graphic drill logs.</li> </ul> <p><i>Middle Island:</i></p> <ul style="list-style-type: none"> <li>Primary field data is collected on field sampling sheets and then compiled on standard Excel templates for validation and data transfer.</li> <li>Primary analytical data is received electronically from the laboratory and imported into an electronic assay register spread sheet for validation and data transfer. Data validation is conducted by comparing the spreadsheet data against the Certificate of Analysis supplied as a secured pdf file by the laboratory.</li> <li>Primary data is stored and further validated in an ODCB database maintained by an external database provider.</li> </ul>
	<ul style="list-style-type: none"> <li>Discuss any adjustment to assay data.</li> </ul>	<p><i>Historical:</i></p> <ul style="list-style-type: none"> <li>No adjustments are reported for historical assay data.</li> </ul> <p><i>Middle Island:</i></p> <ul style="list-style-type: none"> <li>No adjustments to assay data have been made.</li> </ul>
<b>Location of data points</b>	<ul style="list-style-type: none"> <li>Accuracy and quality of surveys used to locate drill holes (collar and down-hole surveys), trenches, mine workings and other locations used in Mineral Resource estimation.</li> </ul>	<p><i>Historical:</i></p> <ul style="list-style-type: none"> <li>No information is available on the methodology used to locate historical data other than as described below.</li> <li><i>Reservoir:</i> Down hole survey measurements were collected at approximately 50m intervals.</li> <li>The location of historical underground mine workings was obtained by digitising registered historical mine plans with level (RL) values assigned from available data points. No re-survey of historical underground workings has been undertaken.</li> </ul> <p><i>Middle Island:</i></p> <ul style="list-style-type: none"> <li>Rock chip, stream sediment and soil samples collected were located by handheld GPS in UTM WGS84 34 North co-ordinates.</li> <li>Drill hole collars and channel samples are set out using a handheld GPS (with +/-5m accuracy) and subsequently surveyed by a contract surveyor to sub-metre accuracy.</li> <li>The azimuth and dip at the hole collar are recorded by the site geologist using a compass and clinometer.</li> <li>Down hole survey measurements are collected with a REFLEX single/multi-shot camera at 30m down hole depth and then at 30m intervals thereafter. A survey is also acquired at the bottom of each hole.</li> <li>Appendix 2 sets out the easting, northing, RL, drill hole length, dip and azimuth in respect of drilling sampling results reported in this announcement.</li> </ul>
	<ul style="list-style-type: none"> <li>Specification of the grid system used.</li> </ul>	<ul style="list-style-type: none"> <li>Exploration results reported by the Government, Reservoir and Nevsun used the Yugoslavian Gauss-Kruger MGI Balkans Zone 7 grid system with Hermannskogel datum.</li> <li>The Company uses the UTM Zone 34 North co-ordinate system with WGS 84 datum.</li> </ul>
	<ul style="list-style-type: none"> <li>Quality and adequacy of topographic control.</li> </ul>	<p><i>Historical:</i></p> <ul style="list-style-type: none"> <li>No information is available on historical topographic control.</li> </ul> <p><i>Middle Island:</i></p> <ul style="list-style-type: none"> <li>A high-resolution drone survey was flown across the entire Bobija mining licence and parts of the surrounding Bobija exploration licence producing 1m topographic contours and a photographic mosaic image with 6cm pixel resolution.</li> </ul>

Criteria	JORC Code explanation	Commentary
		<ul style="list-style-type: none"> <li>The quality of the surface topographic control across the balance of the Bobija Project area is poor, and is reliant on public domain 1:25,000 scale topographic maps.</li> </ul>
<b>Data spacing and distribution</b>	<ul style="list-style-type: none"> <li>Data spacing for reporting of Exploration Results.</li> </ul>	<p><i>Historical:</i></p> <ul style="list-style-type: none"> <li><i>Soil sampling:</i> historical soil sampling was reported by Nevsun in 2017, however no results are available for this sampling.</li> <li><i>Rock chip (channel) sampling:</i> selected rock chip sample results are reported by Reservoir and Nevsun from the Bobija Mine area, however, precise sample locations are not known.</li> <li><i>Underground channel sampling:</i> Underground face samples recorded on historic mine plans indicate sampling was completed either:               <ul style="list-style-type: none"> <li>from successive development faces in conjunction with underground development, or</li> <li>as contiguous wall samples after development was completed.</li> </ul> </li> <li><i>Drilling:</i> Historical surface diamond drill holes in the Bobija Mine area have been completed on multiple cross section orientations. As such, there is no consistent grid spacing.</li> </ul> <p><i>Middle Island:</i></p> <ul style="list-style-type: none"> <li><i>Stream sediment sampling:</i> point samples are collected from secondary streams on a notional 1km<sup>2</sup> drainage basin area per sample.</li> <li><i>Soil sampling:</i> samples are collected on a rectangular grid with a 100m - 400m line spacing and 50m - 100m sample spacing.</li> <li><i>Rock chip (including channel) sampling:</i> samples are collected, as required, when mineralised or altered material is identified. Rock chip sampling is completed either as point samples or a contiguous series of "channel" samples.</li> <li><i>Drilling:</i> RC drilling in the Bobija Mine area is conducted on approximate 20m-spaced north-south oriented cross sections.</li> </ul>
	<ul style="list-style-type: none"> <li>Whether the data spacing and distribution is sufficient to establish the degree of geological and grade continuity appropriate for the Mineral Resource and Ore Reserve estimation procedure(s) and classifications applied.</li> </ul>	<p><i>Historical:</i></p> <ul style="list-style-type: none"> <li>Historical data are not utilised for Mineral Resource or Ore Reserve estimation purposes.</li> <li><i>Bobija deposit:</i> The spacing of current drill holes within the Bobija deposit is not considered adequate to establish a Mineral Resource or Ore Reserve estimate.</li> </ul> <p><i>Middle Island:</i></p> <ul style="list-style-type: none"> <li>Geochemical sampling data (stream, soil and rock chip and channel sampling) is not utilised for Mineral Resource or Ore Reserve estimation purposes.</li> <li>It has not yet been determined whether RC drill hole data spacing is sufficient for Mineral Resource or Ore Reserve estimation.</li> </ul>
	<ul style="list-style-type: none"> <li>Whether sample compositing has been applied.</li> </ul>	<p><i>Historical:</i></p> <ul style="list-style-type: none"> <li>No compositing of historical samples has been reported.</li> </ul> <p><i>Middle Island:</i></p> <ul style="list-style-type: none"> <li>The Company has not applied sample compositing.</li> </ul>
<b>Orientation of data in relation to geological structure</b>	<ul style="list-style-type: none"> <li>Whether the orientation of sampling achieves unbiased sampling of possible structures and the extent to which this is known, considering the deposit type.</li> </ul>	<p><i>Historical:</i></p> <ul style="list-style-type: none"> <li>The orientation of historical sampling is unknown other than as described below.</li> <li><i>Underground face sampling:</i> historic plans indicate that rock chip face samples collected during mine development were predominantly horizontal samples oriented perpendicular to the strike of mineralised structures. This orientation is considered unbiased.</li> </ul> <p><i>Middle Island:</i></p>

Criteria	JORC Code explanation	Commentary
		<ul style="list-style-type: none"> <li>Stream sediment samples are point samples and are considered unbiased.</li> <li>Soil samples were collected on notional rectangular grids with soil lines oriented at a high angle to the interpreted strike of mineralised structures. This sample orientation is considered unbiased.</li> <li>Rock chip channel samples were collected orthogonally to the orientation of observed geological structures to minimise potential for sample orientation bias.</li> <li>Channel samples collected in the Bobija Open Pit in late 2025 where taken from exposed bench faces (with an approximate horizontal orientation), as such these samples are not orthogonal to the interpreted general flat-lying orientation of the deposit.</li> <li>Drill holes were oriented to intersect target geologic structures at the most oblique (perpendicular) angle possible, having regard for the interpreted orientation of the structure, the depth of the drill target/s, and the set-up and depth capabilities of the drill rig. To the extent known, the drilling is assumed to be unbiased.</li> </ul>
	<ul style="list-style-type: none"> <li>If the relationship between the drilling orientation and the orientation of key mineralised structures is considered to have introduced a sampling bias, this should be assessed and reported if material.</li> </ul>	<p><i>Historical:</i></p> <ul style="list-style-type: none"> <li><i>Tisovik Mine:</i> None of the 4 historical surface diamond drill holes reported from Tisovik Mine area intersected mineralisation.</li> <li><i>Bobija Mine:</i> The Bobija deposit is interpreted as a generally flat-lying stratigraphically controlled VMS deposit. Of the 44 historical surface diamond drill holes reported within the immediate mine area (for which co-ordinate data is available) 84% are drilled with a dip equal to or greater than 60°, and 80% are drilled with a dip equal to or greater than 75°. The orientation of historical drilling is therefore considered unbiased.</li> </ul> <p><i>Middle Island:</i></p> <ul style="list-style-type: none"> <li>No orientation-induced sampling bias is considered to have been introduced to drilling completed to date in the project area.</li> </ul>
<b>Sample security</b>	<ul style="list-style-type: none"> <li>The measures taken to ensure sample security.</li> </ul>	<p><i>Historical:</i></p> <ul style="list-style-type: none"> <li>The chain of custody for historical exploration samples is not recorded or known.</li> </ul> <p><i>Middle Island:</i></p> <ul style="list-style-type: none"> <li>The Company maintains a secure direct chain of custody from site to the laboratory for all samples.</li> <li>All samples are double bagged and transported to the laboratory by Company personnel or a dedicated transport contractor.</li> </ul>
<b>Audits or reviews</b>	<ul style="list-style-type: none"> <li>The results of any audits or reviews of sampling techniques and data.</li> </ul>	<p><i>Historical:</i></p> <ul style="list-style-type: none"> <li>The use of historical audits and reviews is not recorded or known.</li> </ul> <p><i>Middle Island:</i></p> <ul style="list-style-type: none"> <li>Internal review of sampling techniques and standard operating procedures are periodically undertaken by the Company resulting, where relevant, in enhanced operating procedures.</li> <li>The Company routinely completes internal peer review of all exploration results.</li> </ul>

**Section 2 Reporting of Exploration Results** (Criteria listed in the preceding section also apply to this section.)

Criteria	JORC Code explanation	Commentary
	<ul style="list-style-type: none"> <li>Type, reference name/number, location and ownership including agreements or material issues with third parties such as joint</li> </ul>	<ul style="list-style-type: none"> <li>The Bobija Project comprises three granted exploration licences (Bobija, Bobija East and Kamenita Kosa) and one</li> </ul>



Criteria	JORC Code explanation	Commentary
<b>Mineral tenement and land tenure status</b>	ventures, partnerships, overriding royalties, native title interests, historical sites, wilderness or national park and environmental settings.	<p>exploration licence application (Orovica) all held 100% by the Company.</p> <ul style="list-style-type: none"> <li>In addition, the Bobija Project includes two granted mining licences (Bobija ML and Tisovik ML) accessed under a 10-year agreement with a Serbian-registered company Bobija doo Ljubovija. Subject to mine development by the Company, the vendor is entitled to an 0.5% NSR royalty capped at a cumulative total of €0.5m.</li> <li>The Bobija Project licences include 52 sites of cultural significance that restrict or prohibit exploration activities in the immediate vicinity of such sites.</li> <li>The Bobija Project licences do not include any areas where environmental protection zones have been formally designated or where designation has been initiated. However, the Nature Protection Institute of Serbia, under the Ministry of Environmental Protection, has applied environmental protection conditions to three areas within the Project area (totalling 48km<sup>2</sup>) that either prohibit certain exploration activities without additional specific approval (including invasive activities such as trenching and drilling) or apply seasonal restrictions to activities during the period 15 May to 31 July.</li> <li>Approximately 44% of the Project area (92.3km<sup>2</sup>) is included within the boundaries of the Ecological Network of Serbia (Valjevo Mountains area) which includes:               <ul style="list-style-type: none"> <li>an Important Bird Area (RS025IBA) (92.3km<sup>2</sup>), and</li> <li>a Prime Butterfly Area (Povlen 15) (7.8km<sup>2</sup>).</li> </ul> </li> <li>In the future, the Government may impose additional licence conditions, or designate new areas of cultural or environmental significance, that may impact on the Company's exploration and development activities.</li> </ul>
	<ul style="list-style-type: none"> <li>The security of the tenure held at the time of reporting along with any known impediments to obtaining a licence to operate in the area.</li> </ul>	<ul style="list-style-type: none"> <li>The Company's 100%-held exploration licences and exploration licence application are in good standing.</li> <li>The Company holds all necessary licences to undertake exploration activities.</li> <li>The third-party mining licences, accessed via a 10-year agreement, are valid but are not in good standing due to the failure of the licence holder to meet various licence holder obligations associated with historic mining activities. The Company, in collaboration with the licence owner (Bobija doo Ljubovija) and in consultation with the Ministry of Mines, has commenced a series of actions that seek to re-establish the standing of the licences over an approximate 2-year timeframe.</li> <li>Landowner permission is required to undertake invasive exploration activities (including trenching and drilling). The Company anticipates that it will require additional access agreements dependent on the location and type of future exploration activities.</li> <li>A landowner may, by verbal or written notification, deny the right of access for exploration activities. However, companies retain the right to expropriate land for exploration or mining purposes subject to statutory approval.</li> </ul>
<b>Exploration done by other parties</b>	<ul style="list-style-type: none"> <li>Acknowledgment and appraisal of exploration by other parties.</li> </ul>	<ul style="list-style-type: none"> <li>Western Serbia has a long history of mining. Numerous copper deposits hosted within the regional diabase-chert formations were exploited by Roman and Sasa miners. There has also been mining in and around the Veliki Majdan site since the 14th Century.</li> <li>Exploration of largest known deposit in the district, Veliki Majdan, started in the 1930's. Development of other deposits in the region followed including Tisovik (1935) and Bobija (1948).</li> <li>Exploration in the second half of the 20<sup>th</sup> century was mainly advanced by the Government and related entities including Geozavod and RMHK Trepca with the most</li> </ul>

Criteria	JORC Code explanation	Commentary
		<p>intensive activity occurring during 1964-65, 1974-75 and 1986-88.</p> <ul style="list-style-type: none"> <li>Modern-era exploration within the Bobija Project area has been undertaken by two companies including Mineco (~2015) and Balkan Exploration and Mining doo (BEM). BEM was held under the successive ownership of three different companies including Reservoir (2007-14), NevSun (2016-17) and Zijin (from 2018).</li> <li>Historical exploration drilling has substantially focussed on known deposits.</li> </ul>
<b>Geology</b>	<ul style="list-style-type: none"> <li>Deposit type, geological setting and style of mineralisation.</li> </ul>	<ul style="list-style-type: none"> <li>The Bobija Project licences and occur within the Ljubovija and Valjevo 1: 100,000 map sheets.</li> <li>The Bobija Project area is centred on the western edge of the Vardar geo-tectonic zone. The project licences are comprised of three geo-tectonic units:               <ul style="list-style-type: none"> <li><i>Drina-Ivanjica Terrain</i>: forms the southern part of the project licences and consists of Palaeozoic schists and sandstones, Lower Triassic conglomerates, sandstones and marls (host of Pb-Zn-Au-Ag-barite mineralisation), Middle Triassic limestones and volcano-sedimentary formation, Jurassic volcano-sedimentary formation and Cretaceous limestones.</li> <li><i>Western Vardar Ophiolite</i>: forms the central part of the project licences consists of Jurassic ophiolite melange including diabase, chert, sandstone-conglomerate and claystone.</li> <li><i>Jadar-Kopaonik Terrain</i>: forms the northern part of the project licences and is characterised by presence of Devonian limestone, Carboniferous sandstone and limestone, Permian sandstone-claystone and limestone, and Triassic limestone.</li> </ul> </li> <li>Several styles of mineralisation have been recognised in the region, including:               <ul style="list-style-type: none"> <li>volcanogenic massive sulphide (VMS) Zn-Pb-Cu-Ag-Au mineralisation</li> <li>skarn and stratiform manto Pb, Zn, Ag, (Au) mineralisation, and</li> <li>carbonate-hosted, replacement style Cu-Au mineralisation.</li> </ul> </li> </ul>
<b>Drill hole Information</b>	<ul style="list-style-type: none"> <li>A summary of all information material to the understanding of the exploration results including a tabulation of the following information for all Material drill holes:               <ul style="list-style-type: none"> <li>easting and northing of the drill hole collar</li> <li>elevation or RL (Reduced Level – elevation above sea level in metres) of the drill hole collar</li> <li>dip and azimuth of the hole</li> <li>down hole length and interception depth</li> <li>hole length.</li> </ul> </li> </ul>	<p><i>Historical:</i></p> <ul style="list-style-type: none"> <li>Multiple phases of historical exploration drilling have been completed in the Bobija Project area, including by:               <ul style="list-style-type: none"> <li>Government: 54 holes for 4,036.50m (1964-88)</li> <li>Reservoir: 8 holes for 622.90m (2014)</li> <li>NevSun: 15 holes for 1,632.00m (2016/17)</li> </ul> </li> </ul> <p><i>Middle Island:</i></p> <ul style="list-style-type: none"> <li>The Company commenced RC drilling in the Bobija Project area in late 2025 and to date has completed 11 holes for 816.0m of drilling. Tabulation of drill hole data including co-ordinates, dip, azimuth, down hole length, intercept depth and hole length are included in detailed tabulations when results are reported.</li> </ul>
	<ul style="list-style-type: none"> <li>If the exclusion of this information is justified on the basis that the information is not Material and this exclusion does not detract from the understanding of the report, the Competent Person should clearly explain why this is the case.</li> </ul>	<ul style="list-style-type: none"> <li>Refer to Appendix 2.</li> </ul>
<b>Data aggregation methods</b>	<ul style="list-style-type: none"> <li>In reporting Exploration Results, weighting averaging techniques, maximum and/or minimum grade truncations (e.g. cutting of high grades) and cut-off grades are usually Material and should be stated.</li> </ul>	<ul style="list-style-type: none"> <li>No weighted averages, grade truncations or cut-off grades have been used in the reporting of point rock chip, soil or stream sediment sample results.</li> <li>Length-weighted assay results are reported for channel sampling and drilling above nominated cut-off grades where the selected cut-off grade is considered</li> </ul>

Criteria	JORC Code explanation	Commentary														
		appropriate to the exploration stage and style of mineralisation recorded.														
	<ul style="list-style-type: none"><li>Where aggregate intercepts incorporate short lengths of high grade results and longer lengths of low grade results, the procedure used for such aggregation should be stated and some typical examples of such aggregations should be shown in detail.</li></ul>	<ul style="list-style-type: none"><li>Higher grade intervals within longer lengths of lower grade zones, where present, and where data is available, are identified in the reporting of channel sample and drill hole assay results.</li></ul>														
	<ul style="list-style-type: none"><li>The assumptions used for any reporting of metal equivalent values should be clearly stated.</li></ul>	<ul style="list-style-type: none"><li>No metal equivalent values are reported.</li></ul>														
<b>Relationship between mineralisation widths and intercept lengths</b>	<ul style="list-style-type: none"><li>These relationships are particularly important in the reporting of Exploration Results.</li><li>If the geometry of the mineralisation with respect to the drill hole angle is known, its nature should be reported.</li><li>If it is not known and only the down hole lengths are reported, there should be a clear statement to this effect (e.g. ‘down hole length, true width not known’).</li></ul>	<p><i>Historical:</i></p> <ul style="list-style-type: none"><li><i>Tisovik Mine:</i> None of the 4 historical surface diamond drill holes reported from Tisovik Mine area intersected mineralisation.</li><li><i>Bobija Mine:</i> The Bobija deposit is interpreted as a generally flat-lying stratigraphically controlled VMS deposit. Of the 44 historical surface diamond drill holes completed within the Bobija Mine area, 84% are drilled with a dip equal to or greater than 60°, and 80% are drilled with a dip equal to or greater than 75°.</li><li>All reported drill hole intercepts are reported as down-hole lengths.</li></ul> <p><i>Middle Island:</i></p> <ul style="list-style-type: none"><li>Bobija is a sediment-hosted massive sulphide deposit interpreted as either of SEDEX or VMS affinity. Mineralisation occurring as flat-lying to shallow dipping zones of massive sulphides +/- massive barite. Drilling completed to date is steeply dipping in the range -60° to -70° which provides for an approximate orthogonal intersection to mineralisation.</li></ul>														
<b>Diagrams</b>	<ul style="list-style-type: none"><li>Appropriate maps and sections (with scales) and tabulations of intercepts should be included for any significant discovery being reported These should include, but not be limited to a plan view of drill hole collar locations and appropriate sectional views</li></ul>	<ul style="list-style-type: none"><li>Refer to figures contained within this announcement.</li><li>Figure 2 contains a plan view of drill hole locations.</li></ul>														
<b>Balanced reporting</b>	<ul style="list-style-type: none"><li>Where comprehensive reporting of all Exploration Results is not practicable, representative reporting of both low and high grades and/or widths should be practiced to avoid misleading reporting of Exploration Results.</li></ul>	<ul style="list-style-type: none"><li>Balanced reporting of Exploration Results is presented within this announcement.</li></ul>														
<b>Other substantive exploration data</b>	<ul style="list-style-type: none"><li>Other exploration data, if meaningful and material, should be reported including (but not limited to): geological observations; geophysical survey results; geochemical survey results; bulk samples – size and method of treatment; metallurgical test results; bulk density, groundwater, geotechnical and rock characteristics; potential deleterious or contaminating substances.</li></ul>	<p><i>Geophysics:</i></p> <ul style="list-style-type: none"><li>One historical geophysical survey is recorded from the Bobija Project area:<ul style="list-style-type: none"><li>Reservoir (2014) completed a gravity survey over the Bobija deposit (25m x 25m grid / 0.45km<sup>2</sup> area). The survey demonstrated a good response from areas with known sulphide-barite mineralisation, and identified new targets for drill testing in the proximity of the mine.</li></ul></li></ul> <p><i>Metallurgical Testwork:</i></p> <ul style="list-style-type: none"><li>Reported mineralogical and metallurgical studies reported for the Bobija deposit are limited.<ul style="list-style-type: none"><li><i>Vracar R., et al (2003):</i> Undertook three-stage testwork involving reduction roasting, magnetic separation and autoclave leaching of a barite-sulphide bulk sample assaying:</li></ul></li></ul> <table><tr><td>Cu (%)</td><td>Zn (%)</td><td>Pb (%)</td><td>Au (g/t)</td><td>Ag (g/t)</td><td>Ba (%)</td><td>Fe (%)</td></tr><tr><td>0.84</td><td>3.75</td><td>3.92</td><td>n/a</td><td>87</td><td>28.3</td><td>12.2</td></tr></table>	Cu (%)	Zn (%)	Pb (%)	Au (g/t)	Ag (g/t)	Ba (%)	Fe (%)	0.84	3.75	3.92	n/a	87	28.3	12.2
Cu (%)	Zn (%)	Pb (%)	Au (g/t)	Ag (g/t)	Ba (%)	Fe (%)										
0.84	3.75	3.92	n/a	87	28.3	12.2										

Criteria	JORC Code explanation	Commentary
		<p>Metallurgical sample composition.</p> <p>The study reported 93.5% to 96.7% reduction of BaSO<sub>4</sub> by reduction roasting at 850° to 900°C for 120-180 minutes. The study also reported high autoclave leach recoveries including 97.85% Zn, 95.36% Cu and 96.25% Fe, from autoclave leaching (at 210°C) sulphide concentrates produced by reduction roasting whole rock samples at 900°C. However, no mass balances or total metal recoveries were reported. No consideration was given to the recovery of gold.</p> <ul style="list-style-type: none"> <li>- <i>Reservoir (2015)</i>: Reservoir initiated research into the metallurgical properties of sulphide mineralisation from the Bobija deposit, however no results are reported.</li> <li>• No other exploration data that is considered meaningful and material has been omitted from this announcement.</li> </ul>
<b>Further work</b>	<ul style="list-style-type: none"> <li>• The nature and scale of planned further work (e.g. tests for lateral extensions or depth extensions or large-scale step-out drilling).</li> </ul>	<ul style="list-style-type: none"> <li>• Further work planned in the Bobija Project area will include mapping, stream sediment sampling, soil sampling, rock chip sampling, trenching, geophysical surveys and exploration drilling.</li> <li>• Planned exploration activities are sequential and may change subject to exploration results obtained including assessment of historical exploration data.</li> </ul>
	<ul style="list-style-type: none"> <li>• Diagrams clearly highlighting the areas of possible extensions, including the main geological interpretations and future drilling areas, provided this information is not commercially sensitive.</li> </ul>	<ul style="list-style-type: none"> <li>• Refer to figures contained within this announcement.</li> </ul>



## Appendix 2 – Bobija Drill Hole Collar and Survey Details

Hole ID	Licence	East	North	RL	Depth	Dip	Azimuth
<b>BMLRC001</b>	Bobija ML	384,486	4,895,600	1,099	100.00	-60	90
<b>BMLRC002</b>	Bobija ML	384,456	4,895,586	1,093	90.00	-60	260
<b>BMLRC003</b>	Bobija ML	384,427	4,895,554	1,078	100.00	-65	275
<b>BMLRC004</b>	Bobija ML	384,580	4,895,619	1,094	70.00	-60	90
<b>BMLRC005</b>	Bobija EL	384,635	4,895,439	1,099	50.00	-65	90
<b>BMLRC006</b>	Bobija ML	384,520	4,895,501	1,081	36.00	-60	90
<b>BMLRC007</b>	Bobija ML	384,581	4,895,479	1,091	80.00	-60	90
<b>BMLRC008</b>	Bobija ML	384,598	4,895,501	1,092	80.00	-60	90
<b>BMLRC009</b>	Bobija ML	384,604	4,895,518	1,095	80.00	-60	90
<b>BMLRC010</b>	Bobija ML	384,550	4,895,461	1,088	60.00	-60	90
<b>BMLRC011</b>	Bobija ML	384,479	4,895,581	1,094	70.00	-60	090
<b>Total</b>					<b>816.00</b>		