



# STRATA RAISES \$1.175M AND EXPANDS ZELICA GOLD PROJECT

**Expansion adds >6km gold mineralised corridor to Zelica**

## Highlights

### Capital Raise

- Strata has received firm commitments to raise \$1.175M via equity placement to sophisticated and institutional investors
- Placement proceeds to fund exploration activities across Strata's gold portfolio, including a maiden drill program at Zelica, exploration works and other strategic initiatives

### Tenement Acquisition – Zelica South E39/2188

- Strata expands its Zelica Gold Project through the 100% acquisition of the adjoining Zelica South Project (E39/2188), increasing the total contiguous Zelica Project area by 400%
- Low-cost acquisition establishes a strategic landholding in WA's Yundamindra region near Leonora/Laverton, which boasts multiple large-scale (+1Moz) gold deposits and trucking distance to processing mills
- Zelica South is highly prospective yet very underexplored with limited drilling of only 21 holes to a maximum depth of only 50m<sup>1</sup>
- A gold mineralised corridor >6km at Zelica South identified through historical exploration<sup>2</sup> increasing total strike length to ~8km across both Zelica and Zelica South
- Previous exploration at Zelica South has already delivered encouraging results<sup>3</sup>, including:
  - Near-surface quartz veining including **39.60 g/t Au** (KAL012563) and **6.44 g/t Au** (KAL012567) in rock chips within shallow excavations at the West Nest Prospect, which remain undrilled.
  - 4m @ 0.86 g/t Au from 14m (including **1m @ 2.54 g/t Au** from 15m) (EUG006)
  - **1m @ 3.02 g/t Au** from 16m (EUG004)
- Review of all available data and planning for initial fieldwork at Zelica South is underway with strong pipeline of high-priority targets already identified

<sup>1</sup> See Table 3

<sup>2</sup> See Table 1-5, Appendix A,B.

<sup>3</sup> See Table 1,5, Appendix A,B. refer KAL.ASX announcement "High-grade gold in surface rock chips at Zelica Project 22 June 2023"



**Strata Minerals Limited** (ASX: **SMX** or “the **Company**”) is pleased to announce that it has received firm commitments from existing and new institutional, sophisticated and professional investors to raise approximately \$1.175 million (before costs) via placement of 58.75 million new fully paid ordinary shares at an issue price of \$0.02 per Placement Share.

Strata has also executed a binding Heads of Agreement for the tenement acquisition for **100% Zelica South Project** (E39/2188) from Kalgoorlie Gold Mining Limited (ASX.KAL), which adjoins the Zelica Project to the south and significantly expands the footprint area by 400% and a defined gold mineralised corridor for >6km.

Zelica South located in the Yundamindra district, between Leonora and Laverton, Western Australia, is a high prospectivity, yet very underexplored project which provides a major discovery opportunity for Strata.

### **Managing Director Peter Woods commented:**

*“I would like to thank all existing and new shareholders who participated in this capital raising, and with our maiden drill program underway at Zelica, further ground consolidation and funding in place for future drilling, Strata is building great momentum leading into next year as we eagerly await first assays results due early 2026.*

*“Zelica South is a low-cost strategic tenement acquisition in the highly endowed Yundamindra region of Western Australia, home to multiple million-ounce deposits and within trucking distance to processing mills. It is a fantastic outcome for Strata as it significantly expands our exploration footprint which now boasts close to 8km of a defined mineralised gold corridor adding considerable scale to the Zelica Project.*

### **Placement Details**

The Company has received commitments from existing and new sophisticated and professional investors comprising 58.75 million new Shares at an issue price of \$0.02 per Share in a two tranche Placement.

Tranche 1 of the Placement will issue approximately 55.25 million new Shares to raise approximately \$1.105 million (“Tranche One”). Tranche One of the Placement will be undertaken within the Company’s existing placement capacity pursuant to ASX listing rules 7.1 and 7.1A.

Tranche 2 of the Placement will comprise 3.5 million new Shares to raise \$0.07 million (“Tranche 2”) and is comprised of commitments from Directors of the Company and/or their related parties on the same terms as Tranche 1. Tranche 2 is subject to shareholder approval at a general meeting of shareholders which will be convened shortly.

The Placement issue price of \$0.02 per Share represents a 11.4% discount to the 15-day Volume Weighted Average Price of the Company’s shares on 9 December 2025. The new Shares to be issued under the Placement will rank equally with the existing ordinary shares on issue.

Allotment of the Shares pursuant to Tranche 1 of the Placement is expected to occur on or around 19 December 2025.

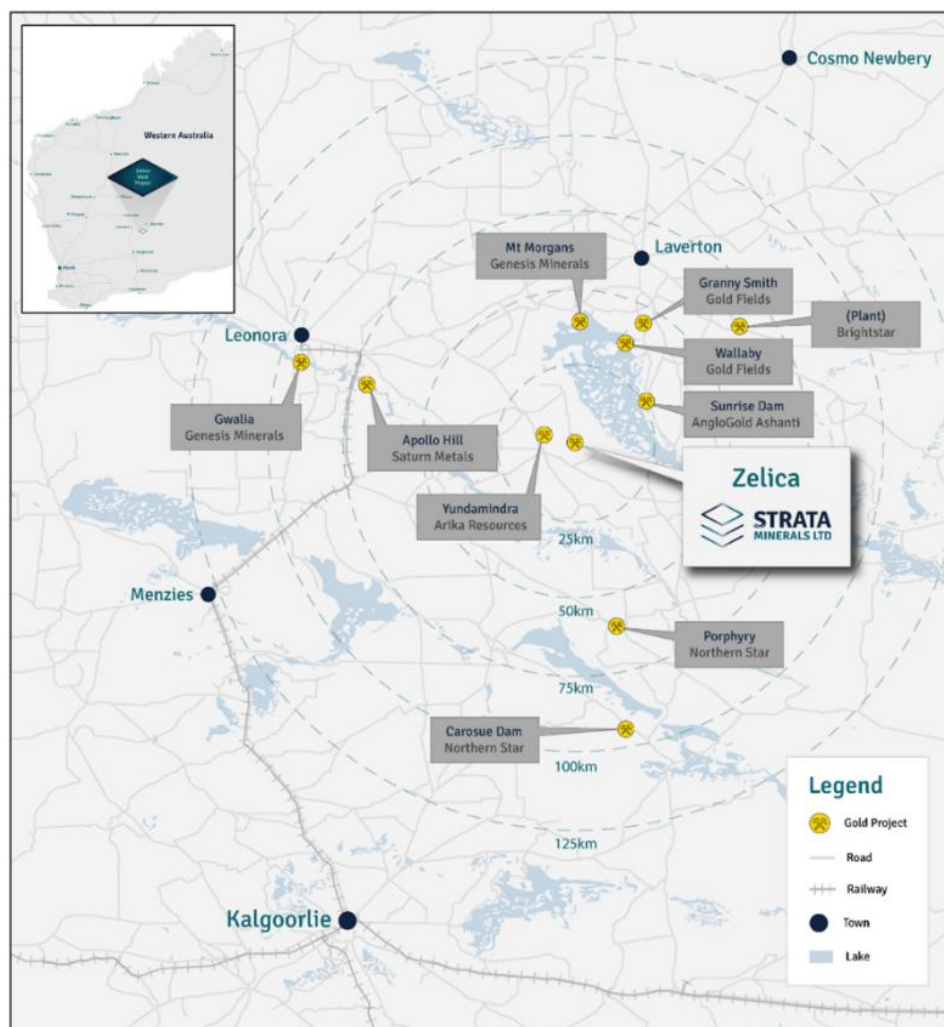
CPS Capital acted as Lead Manager to the Placement.

### **Expansion Rationale - Zelica South Gold Project Acquisition**

Strata has executed a binding Heads of Agreement for the tenement acquisition for 100% Zelica South Project (E39/2188) from Kalgoorlie Gold Mining Limited (ASX.KAL) for \$20,000 cash and \$80,000 worth of consideration shares at a minimum of \$0.02 per share or the 10 day VWAP up to the date of execution of the Heads of Agreement. 50% of the consideration shares subject to 6 month voluntary escrow and the balance of the consideration shares subject to 12 months escrow. Completion of the acquisition is subject to shareholder approval at a general meeting which will be convened shortly and other standard conditions precedent for an agreement of this nature.

The Zelica South Gold Project is located in the Yundamindra District and sits between the gold mining centres of Leonora and Laverton in Western Australia (Figure 1). The Project consists of one granted tenement E39/2188 (Figure 2) and has all mineral rights.

The project adjoins Strata's Zelica Project to the South and increases the footprint by 400% and greatly enhances the potential strike length of Zelica gold mineralisation corridor to approximately 8km.

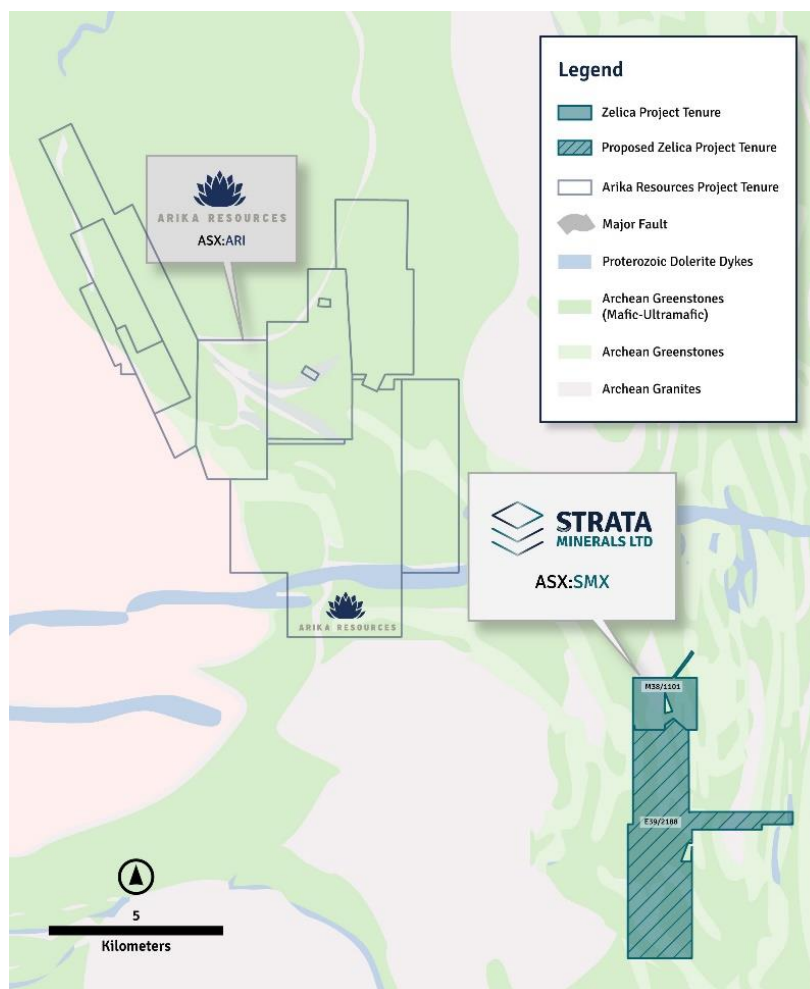


**Figure 1: Location of the Zelica Gold Project in proximity to other gold projects and processing mills**

The Project lies within ~50km of multiple >1Moz gold deposits and trucing distance to multiple processing mills.

Previous exploration work at Zelica South (soils, auger, drilling)<sup>4</sup> and nearby tenements has identified a >6km gold corridor continuing from Zelica into Zelica South and has several important interpreted features including faults and magnetics to show a continuity of favourable gold hosting geological features along strike from Zelica. This is in addition to high-grade historical and modern surface sampling results (**39.60g/t Au**) that remain completely untested by drilling, with the limited existing drilling itself being shallow and primarily drilled in the 1990s and early 2000s for nickel laterite exploration.

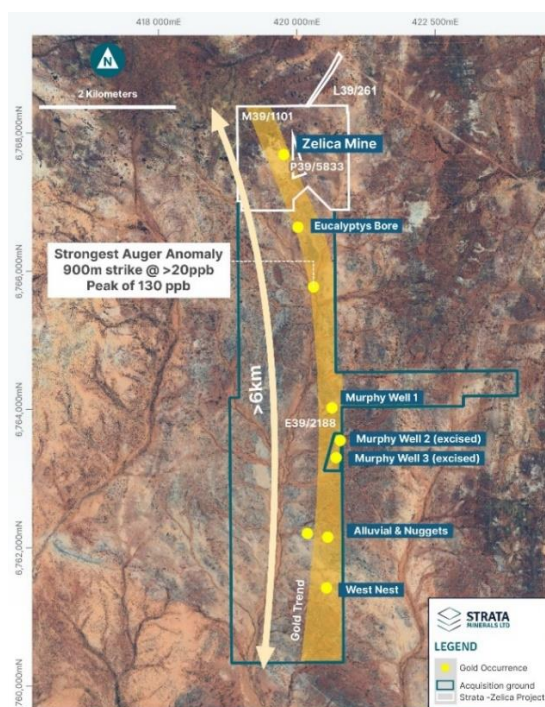
The project provides Strata with a prime opportunity for discovery, extension of the known gold mineralisation at Zelica, and generating value for shareholders.



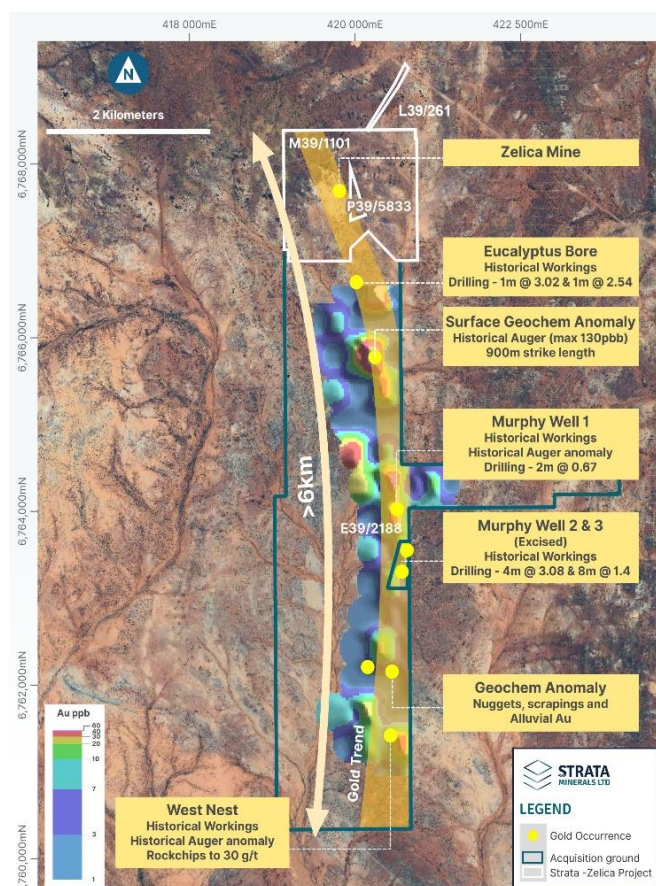
**Figure 2: Location of the Zelica and Zelica South Project in Yundamindra District 6km SE of Arika Resources (ASX:ARI)**

<sup>4</sup> See Table 1-5, Appendix A,B.

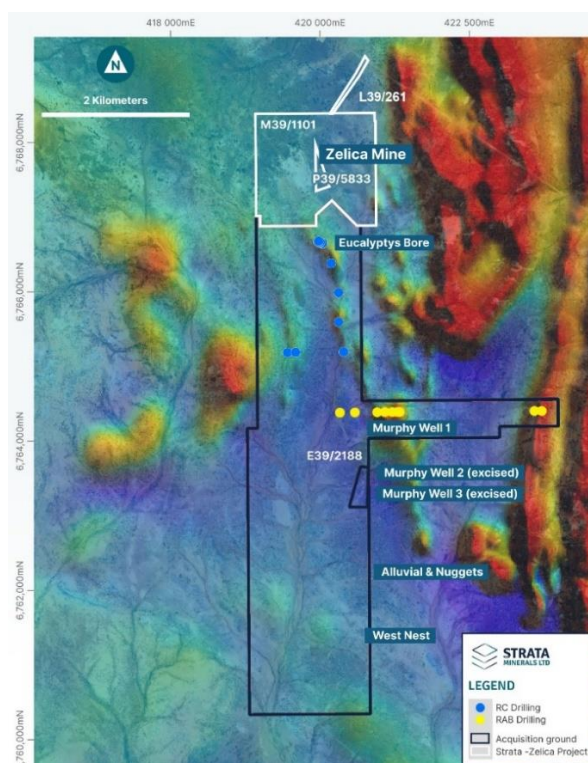




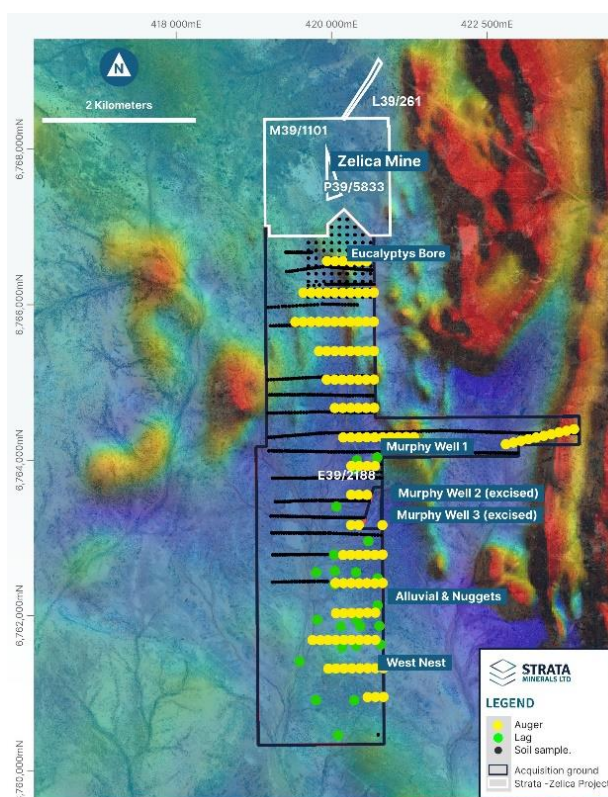
**Figure 3: Zelica South gold occurrences showing interpreted 6km gold trend continuing south from Zelica Gold Project**



**Figure 4: Zelica South interpreted 6km gold trend & historic exploration results**

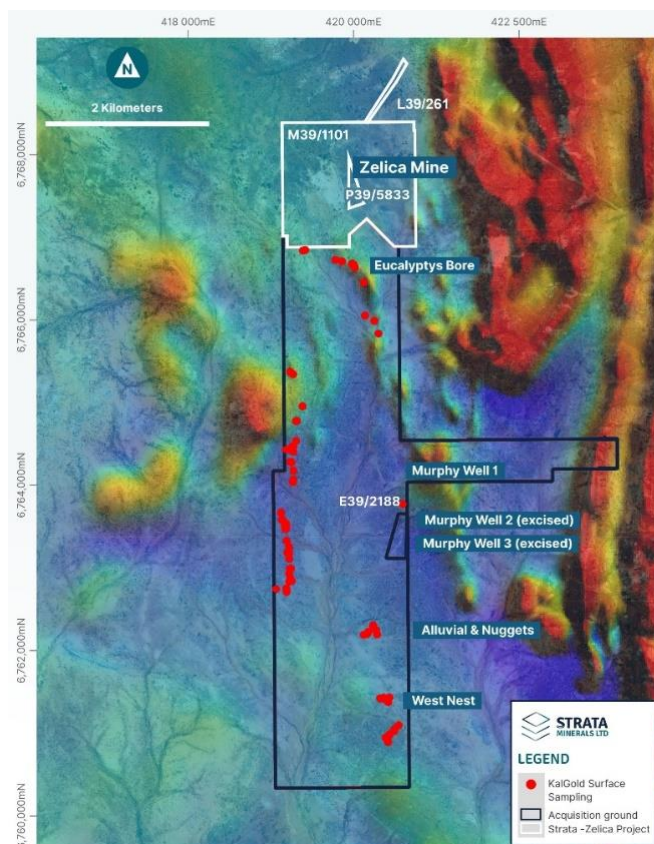


**Figure 5: Zelica South historical drill collars showing limited drilling across area**



**Figure 6: Zelica South historical surface sampling locations**





**Figure 7: Zelica South Kalgoorlie Gold Mining surface sample locations**

## Geological Summary

The Zelica South Project is located in the richly mineralised Eastern Goldfields Province of the Archean Yilgarn Craton. The project's tenements are positioned on the west limb of the Eucalyptus Syncline, an asymmetrical, SSE-plunging fold structure, which is intersected by the Celia Fault, a substantial NNW-SSE-trending deformation zone.

The local Zelica South Project area consists predominantly of a succession of ultramafic and mafic flow and intrusive rocks, with interflow sediments of mixed chemical and volcanic origin. This sequence was later intruded by late Archaean granite plutons and Proterozoic dykes. Within this area the dominant structural feature is the Eucalyptus Syncline, an asymmetrical south-southeast plunging fold structure. The Eucalyptus Syncline has been faulted on the eastern margin by north-south oriented faulting associated with the Celia Fault, marking the western margin of the Laverton Tectonic Zone. To the west the syncline has been truncated by the Mount Colindina Granodiorite pluton, and to the south, truncated by the west-northwest trending Honman Fault.

The gold prospective Archean geology is largely covered by a veneer of Cenozoic colluvium and ironstone scree. Outcropping bedrock is rare and typically deeply weathered.



## Next Steps

A full review of existing data for Zelica South is ongoing with a view to begin field activities consisting initially of mapping, sampling and reconnaissance work, followed by targeted aircore drilling as soon as practicable.

First assays from Strata's maiden drill program at Zelica are expected Q1/26.

## COMPANY CONTACT

**Peter Woods - Managing Director**  
Strata Minerals Limited  
[pw@stratamineralslimited.com](mailto:pw@stratamineralslimited.com)

## MEDIA & INVESTOR RELATIONS

**Melissa Tempura**  
NWR Communications  
[melissa@nwrcommunications.com.au](mailto:melissa@nwrcommunications.com.au)

## ABOUT STRATA MINERALS LIMITED

Strata Minerals Limited is an Australian, ASX listed, exploration company with a strategic focus on acquiring, exploring and developing mineral projects in world class jurisdictions. The Company is advancing a portfolio of high-potential gold assets in Western Australia, led by the Zelica, Penny South and Biranup Gold Projects.

## Forward Looking Statements

Some statements in this announcement regarding estimates or future events are forward-looking statements. Forward-looking statements include, but are not limited to, statements preceded by words such as "planned", "expected", "projected", "estimated", "may", "scheduled", "intends", "anticipates", "believes", "potential", "could", "nominal", "conceptual" and similar expressions. Forward-looking statements, opinions and estimates included in this announcement are based on assumptions and contingencies which are subject to change without notice, as are statements about market and industry trends, which are based on interpretations of current market conditions. Statements regarding plans with respect to the Company's mineral properties may also contain forward looking statements.

Forward-looking statements are provided as a general guide only and should not be relied on as a guarantee of future performance. Forward-looking statements may be affected by a range of variables that could cause actual results to differ from estimated results expressed or implied by such forward-looking statements. These risks and uncertainties include but are not limited to liabilities inherent in exploration and development activities, geological, mining, processing and technical problems, the inability to obtain exploration and mine licenses, permits and other regulatory approvals required in connection with operations, competition for among other things, capital, undeveloped lands and skilled personnel; incorrect assessments of prospectivity and the value of acquisitions; the inability to identify further mineralisation at the Company's tenements, changes in commodity prices and exchange rates; currency and interest rate fluctuations; various events which could disrupt exploration and development activities, operations and/or the transportation of mineral products, including labour stoppages and severe weather conditions; the demand for and availability of transportation services; the ability to secure adequate financing and management's ability to anticipate and manage the foregoing factors and risks and various other risks. There can be no assurance that forward-looking statements will prove to be correct.

## Competent Persons Statement

The information in this report that relates to the Exploration Results is based on information compiled or reviewed by Mr Peter Langworthy, Principal Consultant OMNI GeoX Pty Ltd and is a current Member of the AUSIMM. Mr Peter Langworthy has sufficient experience, which is relevant to the style of mineralisation and types of deposit under consideration and to the activities undertaken, to qualify as a Competent Person as defined in the 2012 Edition of the "Australasian Code of Reporting of Exploration Results, Mineral Resources and Ore Reserves". Mr Langworthy consents to the inclusion in the report of the matters based on the information in the form and context in which it appears.





**Table 1 – Kalgoorlie Gold Mining Surface Sampling Details**

SampleID	Sample Type	Company	Grid	Easting (m)	Northing (m)	RL (m)	Au_ppm
KAL003939	DRILLCHIP	KALGOLD	MGA94_51	420003	6766670	432	0.290
KAL003940	DRILLCHIP	KALGOLD	MGA94_51	420003	6766670	432	0.030
KAL003941	DRILLCHIP	KALGOLD	MGA94_51	420003	6766670	432	0.060
KAL003942	DRILLCHIP	KALGOLD	MGA94_51	420003	6766670	432	0.060
KAL003943	DRILLCHIP	KALGOLD	MGA94_51	420003	6766670	432	0.030
KAL003944	DRILLCHIP	KALGOLD	MGA94_51	420003	6766670	432	0.020
KAL003945	DRILLCHIP	KALGOLD	MGA94_51	420003	6766670	432	0.010
KAL003946	DRILLCHIP	KALGOLD	MGA94_51	420003	6766670	432	<0.01
KAL003947	DRILLCHIP	KALGOLD	MGA94_51	420003	6766670	432	0.020
KAL003948	DRILLCHIP	KALGOLD	MGA94_51	420003	6766670	432	0.010
KAL003950	DRILLCHIP	KALGOLD	MGA94_51	420003	6766670	432	0.140
KAL003975	DRILLCHIP	KALGOLD	MGA94_51	420003	6766670	432	<0.01
KAL003976	DRILLCHIP	KALGOLD	MGA94_51	419982	6766684	436	1.080
KAL003977	DRILLCHIP	KALGOLD	MGA94_51	419982	6766684	436	0.110
KAL003978	DRILLCHIP	KALGOLD	MGA94_51	419982	6766684	436	0.080
KAL003979	DRILLCHIP	KALGOLD	MGA94_51	419982	6766684	436	0.080
KAL003980	DRILLCHIP	KALGOLD	MGA94_51	419982	6766684	436	0.070
KAL003981	DRILLCHIP	KALGOLD	MGA94_51	419982	6766684	436	0.040
KAL003982	DRILLCHIP	KALGOLD	MGA94_51	419982	6766684	436	<0.01
KAL003983	DRILLCHIP	KALGOLD	MGA94_51	419982	6766684	436	<0.01
KAL003985	DRILLCHIP	KALGOLD	MGA94_51	419982	6766684	436	0.020
KAL003986	DRILLCHIP	KALGOLD	MGA94_51	419982	6766684	436	0.020
KAL003987	ROCK	KALGOLD	MGA94_51	420015	6766643	440	0.020
KAL003988	ROCK	KALGOLD	MGA94_51	420014	6766641	440	0.020
KAL003989	ROCK	KALGOLD	MGA94_51	419860	6766714	440	<0.01
KAL003991	DRILLCHIP	KALGOLD	MGA94_51	420123	6766459	440	<0.01
KAL003992	ROCK	KALGOLD	MGA94_51	420301	6765840	440	0.020
KAL003993	ROCK	KALGOLD	MGA94_51	420250	6765994	440	0.030
KAL003994	ROCK	KALGOLD	MGA94_51	420139	6766058	440	0.030
KAL012555	ROCK	KALGOLD	MGA94_51	420491	6761029	437	<0.01
KAL012556	ROCK	KALGOLD	MGA94_51	420419	6760896	455	<0.01
KAL012557	ROCK	KALGOLD	MGA94_51	420388	6760948	452	<0.01
KAL012558	ROCK	KALGOLD	MGA94_51	420388	6760950	450	<0.01
KAL012559	ROCK	KALGOLD	MGA94_51	420421	6760969	445	<0.01
KAL012560	ROCK	KALGOLD	MGA94_51	420439	6760990	438	<0.01
KAL012561	ROCK	KALGOLD	MGA94_51	420494	6761054	434	<0.01
KAL012562	ROCK	KALGOLD	MGA94_51	420545	6761099	434	0.030
KAL012563	ROCK	KALGOLD	MGA94_51	420419	6761380	433	<b>39.600</b>
KAL012565	ROCK	KALGOLD	MGA94_51	420419	6761380	434	0.030



SampleID	Sample Type	Company	Grid	Easting (m)	Northing (m)	RL (m)	Au_ppm
KAL012566	ROCK	KALGOLD	MGA94_51	420380	6761412	433	0.400
KAL012567	ROCK	KALGOLD	MGA94_51	420361	6761433	434	<b>6.440</b>
KAL012568	ROCK	KALGOLD	MGA94_51	420321	6761423	434	0.500
KAL012569	ROCK	KALGOLD	MGA94_51	420434	6761435	433	0.040
KAL012570	ROCK	KALGOLD	MGA94_51	420284	6762198	437	0.020
KAL012571	ROCK	KALGOLD	MGA94_51	420272	6762254	439	0.020
KAL012572	ROCK	KALGOLD	MGA94_51	420234	6762310	436	<0.01
KAL012573	ROCK	KALGOLD	MGA94_51	420179	6762231	436	<0.01
KAL012575	ROCK	KALGOLD	MGA94_51	420165	6762205	437	0.020
KAL012576	ROCK	KALGOLD	MGA94_51	420165	6762206	437	0.010
KAL012577	ROCK	KALGOLD	MGA94_51	420122	6762194	432	<b>0.230</b>
KAL012578	ROCK	KALGOLD	MGA94_51	420594	6763777	443	0.030
KAL012579	ROCK	KALGOLD	MGA94_51	420596	6763776	443	0.030
KAL012728	ROCK	KALGOLD	MGA94_51	419187	6762756	459	0.050
KAL012729	ROCK	KALGOLD	MGA94_51	419191	6762748	438	<0.01
KAL012730	ROCK	KALGOLD	MGA94_51	419193	6762725	436	<0.01
KAL012731	ROCK	KALGOLD	MGA94_51	419190	6762713	435	0.090
KAL012732	ROCK	KALGOLD	MGA94_51	419223	6762839	435	<0.01
KAL012733	ROCK	KALGOLD	MGA94_51	419254	6762846	436	<0.01
KAL012734	ROCK	KALGOLD	MGA94_51	419232	6762880	431	<0.01
KAL012735	ROCK	KALGOLD	MGA94_51	419221	6762934	433	<0.01
KAL012736	ROCK	KALGOLD	MGA94_51	419229	6762995	434	<0.01
KAL012737	ROCK	KALGOLD	MGA94_51	419237	6762992	435	<0.01
KAL012738	ROCK	KALGOLD	MGA94_51	419242	6762995	435	<0.01
KAL012739	ROCK	KALGOLD	MGA94_51	419223	6763113	438	0.030
KAL012740	ROCK	KALGOLD	MGA94_51	419063	6762748	467	0.020
KAL012837	OUTCROP	KALGOLD	MGA94_51	419221	6763184	430	<0.01
KAL012838	OUTCROP	KALGOLD	MGA94_51	419199	6763188	430	0.040
KAL012839	OUTCROP	KALGOLD	MGA94_51	419219	6763259	430	<0.01
KAL012840	OUTCROP	KALGOLD	MGA94_51	419190	6763331	430	<0.01
KAL012841	OUTCROP	KALGOLD	MGA94_51	419169	6763499	430	<0.01
KAL012842	OUTCROP	KALGOLD	MGA94_51	419175	6763489	430	<0.01
KAL012843	OUTCROP	KALGOLD	MGA94_51	419179	6763473	430	<0.01
KAL012844	OUTCROP	KALGOLD	MGA94_51	419184	6763477	430	<0.01
KAL012845	OUTCROP	KALGOLD	MGA94_51	419185	6763513	430	<0.01
KAL012846	OUTCROP	KALGOLD	MGA94_51	419186	6763534	430	<0.01
KAL012847	OUTCROP	KALGOLD	MGA94_51	419174	6763547	430	<0.01
KAL012848	OUTCROP	KALGOLD	MGA94_51	419142	6763582	430	<0.01
KAL012849	OUTCROP	KALGOLD	MGA94_51	419142	6763582	430	<0.01
KAL012851	OUTCROP	KALGOLD	MGA94_51	419130	6763585	430	<0.01
KAL012852	OUTCROP	KALGOLD	MGA94_51	419124	6763673	430	<0.01
KAL012853	OUTCROP	KALGOLD	MGA94_51	419120	6763674	430	<0.01



SampleID	Sample Type	Company	Grid	Easting (m)	Northing (m)	RL (m)	Au_ppm
KAL012854	OUTCROP	KALGOLD	MGA94_51	419120	6763674	430	<0.01
KAL012855	OUTCROP	KALGOLD	MGA94_51	419266	6764042	430	<0.01
KAL012856	OUTCROP	KALGOLD	MGA94_51	419271	6764074	430	0.020
KAL012857	OUTCROP	KALGOLD	MGA94_51	419272	6764181	430	<b>0.130</b>
KAL012858	OUTCROP	KALGOLD	MGA94_51	419229	6764287	430	<0.01
KAL012859	OUTCROP	KALGOLD	MGA94_51	419247	6764286	430	<0.01
KAL012860	OUTCROP	KALGOLD	MGA94_51	419249	6764283	430	0.030
KAL012861	OUTCROP	KALGOLD	MGA94_51	419181	6764434	430	<0.01
KAL012862	OUTCROP	KALGOLD	MGA94_51	419258	6764471	430	<0.01
KAL012863	OUTCROP	KALGOLD	MGA94_51	419270	6764468	430	<0.01
KAL012864	OUTCROP	KALGOLD	MGA94_51	419270	6764410	430	<0.01
KAL012865	OUTCROP	KALGOLD	MGA94_51	419304	6764542	430	<0.01
KAL012866	OUTCROP	KALGOLD	MGA94_51	419314	6764782	430	<0.01
KAL012867	OUTCROP	KALGOLD	MGA94_51	419302	6764780	430	<0.01
KAL012868	OUTCROP	KALGOLD	MGA94_51	419382	6764960	430	0.010
KAL012869	OUTCROP	KALGOLD	MGA94_51	419233	6765378	430	<0.01
KAL012870	OUTCROP	KALGOLD	MGA94_51	419268	6765348	430	<0.01
KAL012872	OUTCROP	KALGOLD	MGA94_51	419415	6766850	430	<0.01
KAL012873	OUTCROP	KALGOLD	MGA94_51	419387	6766844	430	<0.01
KAL012874	OUTCROP	KALGOLD	MGA94_51	419782	6766731	430	<0.01

**Table 2 - Historic Surface Sampling Details**

SampleID	Sample Type	Company	Grid	Easting (m)	Northing (m)	RL (m)	Au_ppb
A26036_001	AUGER	CIM	MGA94_51	6766565	419940	447.4	<10
A26036_002	AUGER	CIM	MGA94_51	6766562	420042.6	447.8	<10
A26036_003	AUGER	CIM	MGA94_51	6766562	420142.3	446.4	10
A26036_004	AUGER	CIM	MGA94_51	6766561	420243.4	445.6	250
A26036_005	AUGER	CIM	MGA94_51	6766561	420347.1	444.4	<10
A26036_006	AUGER	CIM	MGA94_51	6766560	420448.4	443.1	<10
A26036_022	AUGER	CIM	MGA94_51	6766159	419635.8	447.2	<10
A26036_023	AUGER	CIM	MGA94_51	6766158	419737.1	446.5	10
A26036_024	AUGER	CIM	MGA94_51	6766157	419835.9	445.3	10
A26036_025	AUGER	CIM	MGA94_51	6766159	419938.9	444.3	<10
A26036_026	AUGER	CIM	MGA94_51	6766158	420038.2	443.7	<10
A26036_027	AUGER	CIM	MGA94_51	6766158	420142	444	<10
A26036_028	AUGER	CIM	MGA94_51	6766158	420242.3	444	<10
A26036_029	AUGER	CIM	MGA94_51	6766157	420342.4	443.4	<10
A26036_030	AUGER	CIM	MGA94_51	6766158	420443.7	443.6	<10
A26036_031	AUGER	CIM	MGA94_51	6766158	420543	443.9	<10
A26036_042	AUGER	CIM	MGA94_51	6765782	419532.3	448.4	10





SampleID	Sample Type	Company	Grid	Easting (m)	Northing (m)	RL (m)	Au_ppb
A26036_043	AUGER	CIM	MGA94_51	6765782	419634.1	447.3	<10
A26036_044	AUGER	CIM	MGA94_51	6765782	419736.3	446.3	<10
A26036_045	AUGER	CIM	MGA94_51	6765782	419835.9	445.4	<10
A26036_046	AUGER	CIM	MGA94_51	6765783	419938.1	444.1	10
A26036_047	AUGER	CIM	MGA94_51	6765783	420038.1	442.9	40
A26036_048	AUGER	CIM	MGA94_51	6765783	420139	442.4	10
A26036_049	AUGER	CIM	MGA94_51	6765783	420239.5	441.9	130
A26036_050	AUGER	CIM	MGA94_51	6765784	420341.7	442.4	<10
A26036_051	AUGER	CIM	MGA94_51	6765785	420442.6	442.6	<10
A26036_052	AUGER	CIM	MGA94_51	6765784	420543.1	443	<10
A26036_063	AUGER	CIM	MGA94_51	6765406	419837.7	445.4	10
A26036_064	AUGER	CIM	MGA94_51	6765408	419938.2	444.4	<10
A26036_065	AUGER	CIM	MGA94_51	6765406	420040	443	<10
A26036_066	AUGER	CIM	MGA94_51	6765406	420140.2	442.2	<10
A26036_067	AUGER	CIM	MGA94_51	6765408	420240.5	440.4	<10
A26036_068	AUGER	CIM	MGA94_51	6765407	420341.2	440.3	50
A26036_069	AUGER	CIM	MGA94_51	6765407	420442.8	441.9	10
A26036_070	AUGER	CIM	MGA94_51	6765407	420544.1	442.8	10
A26036_081	AUGER	CIM	MGA94_51	6765040	419936.7	447.9	<10
A26036_082	AUGER	CIM	MGA94_51	6765040	420039.8	444.7	<10
A26036_083	AUGER	CIM	MGA94_51	6765039	420136.9	439.9	<10
A26036_084	AUGER	CIM	MGA94_51	6765040	420241.2	438.4	<10
A26036_085	AUGER	CIM	MGA94_51	6765039	420344.2	440	<10
A26036_086	AUGER	CIM	MGA94_51	6765040	420446.4	440.8	<10
A26036_087	AUGER	CIM	MGA94_51	6765041	420546	442.1	<10
A26036_095	AUGER	CIM	MGA94_51	6764674	420041.4	438.8	40
A26036_096	AUGER	CIM	MGA94_51	6764674	420142.8	437.7	<10
A26036_097	AUGER	CIM	MGA94_51	6764676	420244.6	438.5	<10
A26036_098	AUGER	CIM	MGA94_51	6764674	420345	439.9	10
A26036_099	AUGER	CIM	MGA94_51	6764675	420446.4	439.6	10
A26036_100	AUGER	CIM	MGA94_51	6764676	420547.9	440.3	<10
A26036_106	AUGER	CIM	MGA94_51	6764295	420148.1	436.4	20
A26036_107	AUGER	CIM	MGA94_51	6764296	420248.2	437.6	10
A26036_108	AUGER	CIM	MGA94_51	6764296	420351.6	439.7	<10
A26036_109	AUGER	CIM	MGA94_51	6764297	420453.4	440.3	70
A26036_110	AUGER	CIM	MGA94_51	6764297	420554.3	439.7	10
A26036_111	AUGER	CIM	MGA94_51	6764298	420657.3	439.8	<10
A26036_112	AUGER	CIM	MGA94_51	6764301	420757.8	442	10
A26036_113	AUGER	CIM	MGA94_51	6764302	420857.5	444	<10
A26036_114	AUGER	CIM	MGA94_51	6764303	420959.7	444.4	20
A26036_115	AUGER	CIM	MGA94_51	6764301	421059.7	444.2	<10
A26036_116	AUGER	CIM	MGA94_51	6763929	420253.2	437.3	<10



SampleID	Sample Type	Company	Grid	Easting (m)	Northing (m)	RL (m)	Au_ppb
A26036_117	AUGER	CIM	MGA94_51	6763927	420353.3	438.7	10
A26036_118	AUGER	CIM	MGA94_51	6763928	420456.1	440.1	50
A26036_119	AUGER	CIM	MGA94_51	6763928	420558.3	441.5	10
A26036_125	AUGER	CIM	MGA94_51	6763559	420250.7	437.2	10
A26036_126	AUGER	CIM	MGA94_51	6763558	420350.8	439.1	<10
A26036_127	AUGER	CIM	MGA94_51	6763557	420454.7	439.4	<10
A26036_146	AUGER	CIM	MGA94_51	6763168	420250.3	436.5	<10
A26036_147	AUGER	CIM	MGA94_51	6763168	420350.3	437.2	10
A26036_150	AUGER	CIM	MGA94_51	6763168	420653.5	441.3	<10
A26036_167	AUGER	CIM	MGA94_51	6762784	420148.5	434	<10
A26036_168	AUGER	CIM	MGA94_51	6762786	420249	437.7	<10
A26036_169	AUGER	CIM	MGA94_51	6762785	420351.6	440.2	<10
A26036_170	AUGER	CIM	MGA94_51	6762786	420452.5	439.5	10
A26036_171	AUGER	CIM	MGA94_51	6762785	420555.6	441.1	<10
A26036_172	AUGER	CIM	MGA94_51	6762789	420654.8	443.8	10
A26036_189	AUGER	CIM	MGA94_51	6762423	420050.6	432.9	<10
A26036_190	AUGER	CIM	MGA94_51	6762422	420151.9	433.8	<10
A26036_191	AUGER	CIM	MGA94_51	6762423	420252.4	434.7	20
A26036_192	AUGER	CIM	MGA94_51	6762421	420351.2	436.3	20
A26036_193	AUGER	CIM	MGA94_51	6762422	420453.4	437.8	10
A26036_194	AUGER	CIM	MGA94_51	6762421	420556	439.7	<10
A26036_195	AUGER	CIM	MGA94_51	6762422	420656.5	443.1	10
A26036_212	AUGER	CIM	MGA94_51	6762034	420056.5	430.5	<10
A26036_213	AUGER	CIM	MGA94_51	6762035	420157.4	431.3	<10
A26036_214	AUGER	CIM	MGA94_51	6762038	420257.9	431.6	<10
A26036_215	AUGER	CIM	MGA94_51	6762038	420359.2	433.3	<10
A26036_216	AUGER	CIM	MGA94_51	6762041	420460.6	435.1	<10
A26036_217	AUGER	CIM	MGA94_51	6762041	420561.9	437	<10
A26036_235	AUGER	CIM	MGA94_51	6761690	419754.4	425.2	10
A26036_236	AUGER	CIM	MGA94_51	6761689	419855.3	425	10
A26036_237	AUGER	CIM	MGA94_51	6761690	419955.8	425.6	10
A26036_238	AUGER	CIM	MGA94_51	6761690	420056.7	427.1	<10
A26036_239	AUGER	CIM	MGA94_51	6761693	420158.9	427.8	30
A26036_240	AUGER	CIM	MGA94_51	6761692	420258.1	428.6	10
A26036_241	AUGER	CIM	MGA94_51	6761691	420360.3	430.1	<10
A26036_242	AUGER	CIM	MGA94_51	6761693	420462.1	430.8	<10
A26036_243	AUGER	CIM	MGA94_51	6761691	420563.4	430.7	<10
A26036_261	AUGER	CIM	MGA94_51	6761322	419958.8	426.5	<10
A26036_262	AUGER	CIM	MGA94_51	6761324	420058.4	428.3	10
A26036_263	AUGER	CIM	MGA94_51	6761324	420160.6	429.8	20
A26036_264	AUGER	CIM	MGA94_51	6761326	420261.1	430.8	10
A26036_265	AUGER	CIM	MGA94_51	6761327	420361.6	431.9	10



SampleID	Sample Type	Company	Grid	Easting (m)	Northing (m)	RL (m)	Au_ppb
A26036_266	AUGER	CIM	MGA94_51	6761327	420465	432.7	10
A26036_267	AUGER	CIM	MGA94_51	6761327	420566	433.5	50
A26036_268	AUGER	CIM	MGA94_51	6761329	420666.4	434.4	10
A26036_285	AUGER	CIM	MGA94_51	6760956	420463.8	438.1	<10
A26036_286	AUGER	CIM	MGA94_51	6760957	420566.4	434.8	10
A26036_287	AUGER	CIM	MGA94_51	6760958	420668.1	435.2	10
A1415_0001	SOIL	AUSTRALIAN SELECTION PTY LTD	MGA94_51	6766676	419410.9	450.5	No Data
A1415_0002	SOIL	AUSTRALIAN SELECTION PTY LTD	MGA94_51	6766676	419429.2	450.2	No Data
A1415_0003	SOIL	AUSTRALIAN SELECTION PTY LTD	MGA94_51	6766676	419448.7	449.7	No Data
A1415_0004	SOIL	AUSTRALIAN SELECTION PTY LTD	MGA94_51	6766676	419470.7	449.3	No Data
A1415_0005	SOIL	AUSTRALIAN SELECTION PTY LTD	MGA94_51	6766674	419495.3	449	No Data
A1415_0006	SOIL	AUSTRALIAN SELECTION PTY LTD	MGA94_51	6766675	419517.8	448.9	No Data
A1415_0007	SOIL	AUSTRALIAN SELECTION PTY LTD	MGA94_51	6766675	419543.2	449	No Data
A1415_0008	SOIL	AUSTRALIAN SELECTION PTY LTD	MGA94_51	6766676	419563.6	449	No Data
A1415_0009	SOIL	AUSTRALIAN SELECTION PTY LTD	MGA94_51	6766674	419581.4	448.9	No Data
A1415_0010	SOIL	AUSTRALIAN SELECTION PTY LTD	MGA94_51	6766676	419599.6	448.6	No Data
A1415_0011	SOIL	AUSTRALIAN SELECTION PTY LTD	MGA94_51	6766677	419619.6	448.1	No Data
A1415_0012	SOIL	AUSTRALIAN SELECTION PTY LTD	MGA94_51	6766673	419651.8	447.8	No Data
A1415_0013	SOIL	AUSTRALIAN SELECTION PTY LTD	MGA94_51	6766676	419684.9	448.3	No Data
A1415_0014	SOIL	AUSTRALIAN SELECTION PTY LTD	MGA94_51	6766676	419713.7	449.2	No Data
A1415_0015	SOIL	AUSTRALIAN SELECTION PTY LTD	MGA94_51	6766675	419740.8	450	No Data
A1415_0078	SOIL	AUSTRALIAN SELECTION PTY LTD	MGA94_51	6766429	419420.7	450	No Data
A1415_0079	SOIL	AUSTRALIAN SELECTION PTY LTD	MGA94_51	6766433	419456.3	450	No Data
A1415_0080	SOIL	AUSTRALIAN SELECTION PTY LTD	MGA94_51	6766435	419492.3	449.7	No Data
A1415_0081	SOIL	AUSTRALIAN SELECTION PTY LTD	MGA94_51	6766443	419528	448.9	No Data
A1415_0082	SOIL	AUSTRALIAN SELECTION PTY LTD	MGA94_51	6766448	419563.2	448.1	No Data
A1415_0083	SOIL	AUSTRALIAN SELECTION PTY LTD	MGA94_51	6766454	419604.3	447.5	No Data
A1415_0084	SOIL	AUSTRALIAN SELECTION PTY LTD	MGA94_51	6766458	419641.2	447	No Data
A1415_0085	SOIL	AUSTRALIAN SELECTION PTY LTD	MGA94_51	6766463	419675.1	446.8	No Data
A1415_0086	SOIL	AUSTRALIAN SELECTION PTY LTD	MGA94_51	6766470	419711.6	446.6	No Data
A1415_0087	SOIL	AUSTRALIAN SELECTION PTY LTD	MGA94_51	6766473	419749.7	446.3	No Data
A1415_0088	SOIL	AUSTRALIAN SELECTION PTY LTD	MGA94_51	6766478	419786.2	445.9	No Data
A1415_0089	SOIL	AUSTRALIAN SELECTION PTY LTD	MGA94_51	6766484	419821.4	445.6	No Data
A1415_0090	SOIL	AUSTRALIAN SELECTION PTY LTD	MGA94_51	6766489	419856.2	445.7	No Data
A1415_0091	SOIL	AUSTRALIAN SELECTION PTY LTD	MGA94_51	6766491	419891.1	445.9	No Data
A1415_0092	SOIL	AUSTRALIAN SELECTION PTY LTD	MGA94_51	6766497	419931.8	446.4	No Data
A1415_0093	SOIL	AUSTRALIAN SELECTION PTY LTD	MGA94_51	6766492	419959	446.6	No Data
A1415_0094	SOIL	AUSTRALIAN SELECTION PTY LTD	MGA94_51	6766487	419992.5	446.8	No Data





SampleID	Sample Type	Company	Grid	Easting (m)	Northing (m)	RL (m)	Au_ppb
A1415_0095	SOIL	AUSTRALIAN SELECTION PTY LTD	MGA94_51	6766485	420023.6	447	No Data
A1415_0096	SOIL	AUSTRALIAN SELECTION PTY LTD	MGA94_51	6766483	420054.2	447.2	No Data
A1415_0097	SOIL	AUSTRALIAN SELECTION PTY LTD	MGA94_51	6766480	420085.3	447	No Data
A1415_0098	SOIL	AUSTRALIAN SELECTION PTY LTD	MGA94_51	6766478	420115.2	446.6	No Data
A1415_0099	SOIL	AUSTRALIAN SELECTION PTY LTD	MGA94_51	6766474	420146.2	446.2	No Data
A1415_0100	SOIL	AUSTRALIAN SELECTION PTY LTD	MGA94_51	6766472	420176.7	445.8	No Data
A1415_0101	SOIL	AUSTRALIAN SELECTION PTY LTD	MGA94_51	6766471	420194.3	445.6	No Data
A1415_0102	SOIL	AUSTRALIAN SELECTION PTY LTD	MGA94_51	6766472	420212.5	445.4	No Data
A1415_0103	SOIL	AUSTRALIAN SELECTION PTY LTD	MGA94_51	6766465	420245.2	445	No Data
A1415_0104	SOIL	AUSTRALIAN SELECTION PTY LTD	MGA94_51	6766466	420275.7	444.8	No Data
A1415_0105	SOIL	AUSTRALIAN SELECTION PTY LTD	MGA94_51	6766461	420304.6	444.5	No Data
A1415_0106	SOIL	AUSTRALIAN SELECTION PTY LTD	MGA94_51	6766461	420334.4	444.4	No Data
A1415_0107	SOIL	AUSTRALIAN SELECTION PTY LTD	MGA94_51	6766459	420370.7	444.2	No Data
A1415_0108	SOIL	AUSTRALIAN SELECTION PTY LTD	MGA94_51	6766456	420399.1	443.8	No Data
A1415_0109	SOIL	AUSTRALIAN SELECTION PTY LTD	MGA94_51	6766453	420430.9	443.1	No Data
A1415_0110	SOIL	AUSTRALIAN SELECTION PTY LTD	MGA94_51	6766451	420457.6	442.6	No Data
A1415_0111	SOIL	AUSTRALIAN SELECTION PTY LTD	MGA94_51	6766449	420486.9	442.5	No Data
A1415_0112	SOIL	AUSTRALIAN SELECTION PTY LTD	MGA94_51	6766448	420520.6	442.7	No Data
A1415_0156	SOIL	AUSTRALIAN SELECTION PTY LTD	MGA94_51	6766250	419701.2	446.1	No Data
A1415_0157	SOIL	AUSTRALIAN SELECTION PTY LTD	MGA94_51	6766252	419773.3	446	No Data
A1415_0158	SOIL	AUSTRALIAN SELECTION PTY LTD	MGA94_51	6766257	419844.1	445.4	No Data
A1415_0159	SOIL	AUSTRALIAN SELECTION PTY LTD	MGA94_51	6766268	419924.2	444.1	No Data
A1415_0160	SOIL	AUSTRALIAN SELECTION PTY LTD	MGA94_51	6766262	419949.6	444.2	No Data
A1415_0161	SOIL	AUSTRALIAN SELECTION PTY LTD	MGA94_51	6766264	419973.8	444.4	No Data
A1415_0162	SOIL	AUSTRALIAN SELECTION PTY LTD	MGA94_51	6766266	419998.4	444.5	No Data
A1415_0163	SOIL	AUSTRALIAN SELECTION PTY LTD	MGA94_51	6766266	420023.9	444.5	No Data
A1415_0164	SOIL	AUSTRALIAN SELECTION PTY LTD	MGA94_51	6766266	420041.2	444.5	No Data
A1415_0165	SOIL	AUSTRALIAN SELECTION PTY LTD	MGA94_51	6766265	420075.2	444.6	No Data
A1415_0166	SOIL	AUSTRALIAN SELECTION PTY LTD	MGA94_51	6766265	420097.2	444.7	No Data
A1415_0167	SOIL	AUSTRALIAN SELECTION PTY LTD	MGA94_51	6766266	420120.5	444.8	No Data
A1415_0168	SOIL	AUSTRALIAN SELECTION PTY LTD	MGA94_51	6766265	420142.6	444.8	No Data
A1415_0169	SOIL	AUSTRALIAN SELECTION PTY LTD	MGA94_51	6766268	420170.1	444.6	No Data
A1415_0170	SOIL	AUSTRALIAN SELECTION PTY LTD	MGA94_51	6766264	420192.2	444.4	No Data
A1415_0171	SOIL	AUSTRALIAN SELECTION PTY LTD	MGA94_51	6766263	420215.1	444.2	No Data
A1415_0172	SOIL	AUSTRALIAN SELECTION PTY LTD	MGA94_51	6766263	420231.6	444.1	No Data
A1415_0173	SOIL	AUSTRALIAN SELECTION PTY LTD	MGA94_51	6766263	420259.2	443.9	No Data
A1415_0174	SOIL	AUSTRALIAN SELECTION PTY LTD	MGA94_51	6766266	420280.4	443.7	No Data



SampleID	Sample Type	Company	Grid	Easting (m)	Northing (m)	RL (m)	Au_ppb
A1415_0175	SOIL	AUSTRALIAN SELECTION PTY LTD	MGA94_51	6766264	420303.7	443.6	No Data
A1415_0176	SOIL	AUSTRALIAN SELECTION PTY LTD	MGA94_51	6766265	420327.9	443.6	No Data
A1415_0177	SOIL	AUSTRALIAN SELECTION PTY LTD	MGA94_51	6766264	420357.1	443.6	No Data
A1415_0178	SOIL	AUSTRALIAN SELECTION PTY LTD	MGA94_51	6766266	420375.8	443.6	No Data
A1415_0179	SOIL	AUSTRALIAN SELECTION PTY LTD	MGA94_51	6766268	420410.6	443.7	No Data
A1415_0180	SOIL	AUSTRALIAN SELECTION PTY LTD	MGA94_51	6766264	420438.5	443.7	No Data
A1415_0181	SOIL	AUSTRALIAN SELECTION PTY LTD	MGA94_51	6766266	420452.5	443.8	No Data
A1415_0182	SOIL	AUSTRALIAN SELECTION PTY LTD	MGA94_51	6766265	420476.7	443.7	No Data
A1415_0183	SOIL	AUSTRALIAN SELECTION PTY LTD	MGA94_51	6766265	420498.3	443.6	No Data
A1415_0184	SOIL	AUSTRALIAN SELECTION PTY LTD	MGA94_51	6766267	420525.5	443.5	No Data
A1415_0185	SOIL	AUSTRALIAN SELECTION PTY LTD	MGA94_51	6766267	420546.9	443.4	No Data
A1415_0220	SOIL	AUSTRALIAN SELECTION PTY LTD	MGA94_51	6765969	419182.6	453.7	No Data
A1415_0221	SOIL	AUSTRALIAN SELECTION PTY LTD	MGA94_51	6765970	419223.3	452.8	No Data
A1415_0222	SOIL	AUSTRALIAN SELECTION PTY LTD	MGA94_51	6765973	419270.4	451.9	No Data
A1415_0223	SOIL	AUSTRALIAN SELECTION PTY LTD	MGA94_51	6765976	419314.9	451.5	No Data
A1415_0224	SOIL	AUSTRALIAN SELECTION PTY LTD	MGA94_51	6765983	419367	450.7	No Data
A1415_0225	SOIL	AUSTRALIAN SELECTION PTY LTD	MGA94_51	6765982	419407.8	450.1	No Data
A1415_0226	SOIL	AUSTRALIAN SELECTION PTY LTD	MGA94_51	6765983	419454	449.3	No Data
A1415_0227	SOIL	AUSTRALIAN SELECTION PTY LTD	MGA94_51	6765985	419501.5	448.5	No Data
A1415_0228	SOIL	AUSTRALIAN SELECTION PTY LTD	MGA94_51	6765990	419549	448.3	No Data
A1415_0229	SOIL	AUSTRALIAN SELECTION PTY LTD	MGA94_51	6765995	419593.5	448.2	No Data
A1415_0230	SOIL	AUSTRALIAN SELECTION PTY LTD	MGA94_51	6765994	419640.1	448	No Data
A1415_0231	SOIL	AUSTRALIAN SELECTION PTY LTD	MGA94_51	6765999	419682.5	447.5	No Data
A1415_0232	SOIL	AUSTRALIAN SELECTION PTY LTD	MGA94_51	6766000	419730	446.7	No Data
A1415_0233	SOIL	AUSTRALIAN SELECTION PTY LTD	MGA94_51	6766002	419777.5	446.1	No Data
A1415_0234	SOIL	AUSTRALIAN SELECTION PTY LTD	MGA94_51	6766006	419818.6	445.8	No Data
A1415_0235	SOIL	AUSTRALIAN SELECTION PTY LTD	MGA94_51	6766013	419878	445.3	No Data
A1415_0236	SOIL	AUSTRALIAN SELECTION PTY LTD	MGA94_51	6766011	419912.3	445	No Data
A1415_0237	SOIL	AUSTRALIAN SELECTION PTY LTD	MGA94_51	6766009	419953.9	444.3	No Data
A1415_0238	SOIL	AUSTRALIAN SELECTION PTY LTD	MGA94_51	6766008	419988.7	443.7	No Data
A1415_0239	SOIL	AUSTRALIAN SELECTION PTY LTD	MGA94_51	6766011	420027.7	443.1	No Data
A1415_0240	SOIL	AUSTRALIAN SELECTION PTY LTD	MGA94_51	6766008	420064.6	442.5	No Data
A1415_0241	SOIL	AUSTRALIAN SELECTION PTY LTD	MGA94_51	6766008	420097.2	442.3	No Data
A1415_0242	SOIL	AUSTRALIAN SELECTION PTY LTD	MGA94_51	6766005	420138.3	442.3	No Data
A1415_0243	SOIL	AUSTRALIAN SELECTION PTY LTD	MGA94_51	6766004	420174.8	442.9	No Data
A1415_0244	SOIL	AUSTRALIAN SELECTION PTY LTD	MGA94_51	6766005	420218.9	443.6	No Data
A1415_0245	SOIL	AUSTRALIAN SELECTION PTY LTD	MGA94_51	6766003	420253.7	443.5	No Data



SampleID	Sample Type	Company	Grid	Easting (m)	Northing (m)	RL (m)	Au_ppb
A1415_0246	SOIL	AUSTRALIAN SELECTION PTY LTD	MGA94_51	6766003	420292.3	442.9	No Data
A1415_0247	SOIL	AUSTRALIAN SELECTION PTY LTD	MGA94_51	6766002	420330.8	442.9	No Data
A1415_0286	SOIL	AUSTRALIAN SELECTION PTY LTD	MGA94_51	6765731	419212.3	453.2	No Data
A1415_0287	SOIL	AUSTRALIAN SELECTION PTY LTD	MGA94_51	6765732	419250.4	452.1	No Data
A1415_0288	SOIL	AUSTRALIAN SELECTION PTY LTD	MGA94_51	6765733	419284.4	451.8	No Data
A1415_0289	SOIL	AUSTRALIAN SELECTION PTY LTD	MGA94_51	6765735	419320.4	451.8	No Data
A1415_0290	SOIL	AUSTRALIAN SELECTION PTY LTD	MGA94_51	6765735	419354.8	451.5	No Data
A1415_0291	SOIL	AUSTRALIAN SELECTION PTY LTD	MGA94_51	6765736	419391.2	450.9	No Data
A1415_0292	SOIL	AUSTRALIAN SELECTION PTY LTD	MGA94_51	6765737	419425.6	450.2	No Data
A1415_0293	SOIL	AUSTRALIAN SELECTION PTY LTD	MGA94_51	6765737	419459.1	449.7	No Data
A1415_0294	SOIL	AUSTRALIAN SELECTION PTY LTD	MGA94_51	6765740	419496	449.2	No Data
A1415_0295	SOIL	AUSTRALIAN SELECTION PTY LTD	MGA94_51	6765739	419532.4	448.7	No Data
A1415_0296	SOIL	AUSTRALIAN SELECTION PTY LTD	MGA94_51	6765740	419563.8	448.4	No Data
A1415_0297	SOIL	AUSTRALIAN SELECTION PTY LTD	MGA94_51	6765741	419601.5	447.9	No Data
A1415_0298	SOIL	AUSTRALIAN SELECTION PTY LTD	MGA94_51	6765741	419638.4	447.3	No Data
A1415_0299	SOIL	AUSTRALIAN SELECTION PTY LTD	MGA94_51	6765743	419671.5	446.8	No Data
A1415_0300	SOIL	AUSTRALIAN SELECTION PTY LTD	MGA94_51	6765744	419704.1	446.5	No Data
A1415_0301	SOIL	AUSTRALIAN SELECTION PTY LTD	MGA94_51	6765745	419741.9	446.3	No Data
A1415_0302	SOIL	AUSTRALIAN SELECTION PTY LTD	MGA94_51	6765744	419775.8	446.1	No Data
A1415_0303	SOIL	AUSTRALIAN SELECTION PTY LTD	MGA94_51	6765745	419808.9	445.8	No Data
A1415_0439	SOIL	AUSTRALIAN SELECTION PTY LTD	MGA94_51	6765037	419181.3	451.1	No Data
A1415_0440	SOIL	AUSTRALIAN SELECTION PTY LTD	MGA94_51	6765041	419219.9	451	No Data
A1415_0441	SOIL	AUSTRALIAN SELECTION PTY LTD	MGA94_51	6765041	419257.2	450.6	No Data
A1415_0442	SOIL	AUSTRALIAN SELECTION PTY LTD	MGA94_51	6765042	419298.4	450.3	No Data
A1415_0443	SOIL	AUSTRALIAN SELECTION PTY LTD	MGA94_51	6765044	419332.7	450.4	No Data
A1415_0444	SOIL	AUSTRALIAN SELECTION PTY LTD	MGA94_51	6765046	419370	450.9	No Data
A1415_0445	SOIL	AUSTRALIAN SELECTION PTY LTD	MGA94_51	6765048	419405.6	451.3	No Data
A1415_0446	SOIL	AUSTRALIAN SELECTION PTY LTD	MGA94_51	6765049	419440.8	451.6	No Data
A1415_0447	SOIL	AUSTRALIAN SELECTION PTY LTD	MGA94_51	6765051	419480.3	451.7	No Data
A1415_0448	SOIL	AUSTRALIAN SELECTION PTY LTD	MGA94_51	6765055	419513.3	451.7	No Data
A1415_0449	SOIL	AUSTRALIAN SELECTION PTY LTD	MGA94_51	6765056	419550.6	451.6	No Data
A1415_0450	SOIL	AUSTRALIAN SELECTION PTY LTD	MGA94_51	6765059	419587.5	451.3	No Data
A1415_0451	SOIL	AUSTRALIAN SELECTION PTY LTD	MGA94_51	6765061	419624.4	450.9	No Data
A1415_0452	SOIL	AUSTRALIAN SELECTION PTY LTD	MGA94_51	6765063	419661.7	450.4	No Data
A1415_0453	SOIL	AUSTRALIAN SELECTION PTY LTD	MGA94_51	6765065	419696.5	450.2	No Data
A1415_0454	SOIL	AUSTRALIAN SELECTION PTY LTD	MGA94_51	6765068	419734.7	450	No Data
A1415_0455	SOIL	AUSTRALIAN SELECTION PTY LTD	MGA94_51	6765069	419766.9	449.7	No Data





SampleID	Sample Type	Company	Grid	Easting (m)	Northing (m)	RL (m)	Au_ppb
A1415_0456	SOIL	AUSTRALIAN SELECTION PTY LTD	MGA94_51	6765069	419805.9	449.4	No Data
A1415_0457	SOIL	AUSTRALIAN SELECTION PTY LTD	MGA94_51	6765072	419836.4	449.1	No Data
A1415_0458	SOIL	AUSTRALIAN SELECTION PTY LTD	MGA94_51	6765074	419876.3	448.5	No Data
A1415_0459	SOIL	AUSTRALIAN SELECTION PTY LTD	MGA94_51	6765076	419911.1	447.9	No Data
A1415_0460	SOIL	AUSTRALIAN SELECTION PTY LTD	MGA94_51	6765076	419949.2	447.3	No Data
A1415_0461	SOIL	AUSTRALIAN SELECTION PTY LTD	MGA94_51	6765077	419987.4	446.5	No Data
A1415_0462	SOIL	AUSTRALIAN SELECTION PTY LTD	MGA94_51	6765078	420017.1	445.7	No Data
A1415_0463	SOIL	AUSTRALIAN SELECTION PTY LTD	MGA94_51	6765085	420057.8	444.3	No Data
A1415_0464	SOIL	AUSTRALIAN SELECTION PTY LTD	MGA94_51	6765084	420083.2	443.3	No Data
A1415_0465	SOIL	AUSTRALIAN SELECTION PTY LTD	MGA94_51	6765083	420118.8	441.6	No Data
A1415_0466	SOIL	AUSTRALIAN SELECTION PTY LTD	MGA94_51	6765085	420146.8	440.3	No Data
A1415_0467	SOIL	AUSTRALIAN SELECTION PTY LTD	MGA94_51	6765080	420180.7	439.3	No Data
A1415_0468	SOIL	AUSTRALIAN SELECTION PTY LTD	MGA94_51	6765081	420216.4	438.8	No Data
A1415_0469	SOIL	AUSTRALIAN SELECTION PTY LTD	MGA94_51	6765087	420246.9	439	No Data
A1415_0470	SOIL	AUSTRALIAN SELECTION PTY LTD	MGA94_51	6765082	420281.7	439.5	No Data
A1415_0471	SOIL	AUSTRALIAN SELECTION PTY LTD	MGA94_51	6765084	420314.7	440.1	No Data
A1415_0472	SOIL	AUSTRALIAN SELECTION PTY LTD	MGA94_51	6765086	420352	440.5	No Data
A1415_0473	SOIL	AUSTRALIAN SELECTION PTY LTD	MGA94_51	6765087	420388.5	440.8	No Data
A1415_0474	SOIL	AUSTRALIAN SELECTION PTY LTD	MGA94_51	6765084	420414.8	440.9	No Data
A1415_0475	SOIL	AUSTRALIAN SELECTION PTY LTD	MGA94_51	6765082	420449.6	441.2	No Data
A1415_0476	SOIL	AUSTRALIAN SELECTION PTY LTD	MGA94_51	6765084	420484.3	441.7	No Data
A1415_0477	SOIL	AUSTRALIAN SELECTION PTY LTD	MGA94_51	6765082	420514.9	442	No Data
A1415_0478	SOIL	AUSTRALIAN SELECTION PTY LTD	MGA94_51	6765084	420545.4	442.2	No Data
A1415_0565	SOIL	AUSTRALIAN SELECTION PTY LTD	MGA94_51	6764843	419204.7	447.7	No Data
A1415_0566	SOIL	AUSTRALIAN SELECTION PTY LTD	MGA94_51	6764844	419233.1	447.7	No Data
A1415_0567	SOIL	AUSTRALIAN SELECTION PTY LTD	MGA94_51	6764844	419264.9	447.6	No Data
A1415_0568	SOIL	AUSTRALIAN SELECTION PTY LTD	MGA94_51	6764844	419295	447.7	No Data
A1415_0569	SOIL	AUSTRALIAN SELECTION PTY LTD	MGA94_51	6764846	419326.8	447.8	No Data
A1415_0570	SOIL	AUSTRALIAN SELECTION PTY LTD	MGA94_51	6764844	419359.4	447.9	No Data
A1415_0571	SOIL	AUSTRALIAN SELECTION PTY LTD	MGA94_51	6764844	419394.2	448.1	No Data
A1415_0572	SOIL	AUSTRALIAN SELECTION PTY LTD	MGA94_51	6764846	419429.4	448.2	No Data
A1415_0573	SOIL	AUSTRALIAN SELECTION PTY LTD	MGA94_51	6764847	419460.3	448.1	No Data
A1415_0574	SOIL	AUSTRALIAN SELECTION PTY LTD	MGA94_51	6764844	419493	447.8	No Data
A1415_0575	SOIL	AUSTRALIAN SELECTION PTY LTD	MGA94_51	6764845	419521.8	447.7	No Data
A1415_0576	SOIL	AUSTRALIAN SELECTION PTY LTD	MGA94_51	6764845	419559.1	447.5	No Data
A1415_0577	SOIL	AUSTRALIAN SELECTION PTY LTD	MGA94_51	6764847	419592.6	447.6	No Data
A1415_0578	SOIL	AUSTRALIAN SELECTION PTY LTD	MGA94_51	6764848	419624.4	447.7	No Data



SampleID	Sample Type	Company	Grid	Easting (m)	Northing (m)	RL (m)	Au_ppb
A1415_0579	SOIL	AUSTRALIAN SELECTION PTY LTD	MGA94_51	6764850	419651.6	447.9	No Data
A1415_0580	SOIL	AUSTRALIAN SELECTION PTY LTD	MGA94_51	6764844	419686.8	447.8	No Data
A1415_0581	SOIL	AUSTRALIAN SELECTION PTY LTD	MGA94_51	6764847	419719.8	447.6	No Data
A1415_0582	SOIL	AUSTRALIAN SELECTION PTY LTD	MGA94_51	6764843	419752.9	447.4	No Data
A1415_0583	SOIL	AUSTRALIAN SELECTION PTY LTD	MGA94_51	6764844	419785.1	447.7	No Data
A1415_0584	SOIL	AUSTRALIAN SELECTION PTY LTD	MGA94_51	6764846	419820.7	448.2	No Data
A1415_0585	SOIL	AUSTRALIAN SELECTION PTY LTD	MGA94_51	6764843	419854.2	448.1	No Data
A1415_0586	SOIL	AUSTRALIAN SELECTION PTY LTD	MGA94_51	6764843	419882.2	447.6	No Data
A1415_0587	SOIL	AUSTRALIAN SELECTION PTY LTD	MGA94_51	6764841	419915.3	446.7	No Data
A1415_0588	SOIL	AUSTRALIAN SELECTION PTY LTD	MGA94_51	6764841	419949.2	445.7	No Data
A1415_0589	SOIL	AUSTRALIAN SELECTION PTY LTD	MGA94_51	6764844	419980.2	444.7	No Data
A1415_0590	SOIL	AUSTRALIAN SELECTION PTY LTD	MGA94_51	6764840	420012	443.4	No Data
A1415_0591	SOIL	AUSTRALIAN SELECTION PTY LTD	MGA94_51	6764837	420048	441.6	No Data
A1415_0592	SOIL	AUSTRALIAN SELECTION PTY LTD	MGA94_51	6764839	420078.6	440.4	No Data
A1415_0593	SOIL	AUSTRALIAN SELECTION PTY LTD	MGA94_51	6764839	420111.2	439.3	No Data
A1415_0594	SOIL	AUSTRALIAN SELECTION PTY LTD	MGA94_51	6764836	420141.3	438.4	No Data
A1415_0595	SOIL	AUSTRALIAN SELECTION PTY LTD	MGA94_51	6764836	420176.5	438	No Data
A1415_0596	SOIL	AUSTRALIAN SELECTION PTY LTD	MGA94_51	6764833	420209.1	437.9	No Data
A1415_0597	SOIL	AUSTRALIAN SELECTION PTY LTD	MGA94_51	6764834	420239.3	438.1	No Data
A1415_0598	SOIL	AUSTRALIAN SELECTION PTY LTD	MGA94_51	6764834	420272.8	438.9	No Data
A1415_0599	SOIL	AUSTRALIAN SELECTION PTY LTD	MGA94_51	6764838	420309.2	439.9	No Data
A1415_0600	SOIL	AUSTRALIAN SELECTION PTY LTD	MGA94_51	6764838	420338.1	440.3	No Data
A1415_0601	SOIL	AUSTRALIAN SELECTION PTY LTD	MGA94_51	6764837	420371.5	440.4	No Data
A1415_0602	SOIL	AUSTRALIAN SELECTION PTY LTD	MGA94_51	6764836	420404.6	440.5	No Data
A1415_0603	SOIL	AUSTRALIAN SELECTION PTY LTD	MGA94_51	6764834	420440.2	440.6	No Data
A1415_0604	SOIL	AUSTRALIAN SELECTION PTY LTD	MGA94_51	6764833	420464.4	440.8	No Data
A1415_0605	SOIL	AUSTRALIAN SELECTION PTY LTD	MGA94_51	6764834	420497.9	441.1	No Data
A1415_0606	SOIL	AUSTRALIAN SELECTION PTY LTD	MGA94_51	6764833	420530.6	441.5	No Data
A1415_0692	SOIL	AUSTRALIAN SELECTION PTY LTD	MGA94_51	6764607	419174.5	443.1	No Data
A1415_0693	SOIL	AUSTRALIAN SELECTION PTY LTD	MGA94_51	6764610	419219.1	444.3	No Data
A1415_0694	SOIL	AUSTRALIAN SELECTION PTY LTD	MGA94_51	6764608	419256	445.6	No Data
A1415_0695	SOIL	AUSTRALIAN SELECTION PTY LTD	MGA94_51	6764611	419294.1	446.5	No Data
A1415_0696	SOIL	AUSTRALIAN SELECTION PTY LTD	MGA94_51	6764612	419336.1	446.8	No Data
A1415_0697	SOIL	AUSTRALIAN SELECTION PTY LTD	MGA94_51	6764613	419369.6	446.7	No Data
A1415_0698	SOIL	AUSTRALIAN SELECTION PTY LTD	MGA94_51	6764613	419408.2	446.4	No Data
A1415_0699	SOIL	AUSTRALIAN SELECTION PTY LTD	MGA94_51	6764613	419448	446.8	No Data
A1415_0700	SOIL	AUSTRALIAN SELECTION PTY LTD	MGA94_51	6764614	419481.1	447.7	No Data



SampleID	Sample Type	Company	Grid	Easting (m)	Northing (m)	RL (m)	Au_ppb
A1415_0701	SOIL	AUSTRALIAN SELECTION PTY LTD	MGA94_51	6764615	419523.9	448.2	No Data
A1415_0702	SOIL	AUSTRALIAN SELECTION PTY LTD	MGA94_51	6764613	419560.8	447.8	No Data
A1415_0703	SOIL	AUSTRALIAN SELECTION PTY LTD	MGA94_51	6764617	419598.6	447.1	No Data
A1415_0704	SOIL	AUSTRALIAN SELECTION PTY LTD	MGA94_51	6764616	419639.3	446.4	No Data
A1415_0705	SOIL	AUSTRALIAN SELECTION PTY LTD	MGA94_51	6764616	419677.4	445.8	No Data
A1415_0706	SOIL	AUSTRALIAN SELECTION PTY LTD	MGA94_51	6764623	419719.4	444.8	No Data
A1415_0707	SOIL	AUSTRALIAN SELECTION PTY LTD	MGA94_51	6764625	419755.9	443.9	No Data
A1415_0708	SOIL	AUSTRALIAN SELECTION PTY LTD	MGA94_51	6764624	419791.5	443.2	No Data
A1415_0709	SOIL	AUSTRALIAN SELECTION PTY LTD	MGA94_51	6764626	419831.3	442.5	No Data
A1415_0710	SOIL	AUSTRALIAN SELECTION PTY LTD	MGA94_51	6764624	419870.4	441.8	No Data
A1415_0711	SOIL	AUSTRALIAN SELECTION PTY LTD	MGA94_51	6764625	419909.8	441.1	No Data
A1415_0712	SOIL	AUSTRALIAN SELECTION PTY LTD	MGA94_51	6764624	419943.3	440.5	No Data
A1415_0713	SOIL	AUSTRALIAN SELECTION PTY LTD	MGA94_51	6764623	419979.3	439.9	No Data
A1415_0714	SOIL	AUSTRALIAN SELECTION PTY LTD	MGA94_51	6764621	420010.7	439.5	No Data
A1415_0715	SOIL	AUSTRALIAN SELECTION PTY LTD	MGA94_51	6764620	420042.1	439	No Data
A1415_0716	SOIL	AUSTRALIAN SELECTION PTY LTD	MGA94_51	6764620	420077.3	438.6	No Data
A1415_0717	SOIL	AUSTRALIAN SELECTION PTY LTD	MGA94_51	6764622	420107	438.4	No Data
A1415_0718	SOIL	AUSTRALIAN SELECTION PTY LTD	MGA94_51	6764617	420140	438.1	No Data
A1415_0719	SOIL	AUSTRALIAN SELECTION PTY LTD	MGA94_51	6764618	420172.7	438.1	No Data
A1415_0720	SOIL	AUSTRALIAN SELECTION PTY LTD	MGA94_51	6764619	420201.1	438.3	No Data
A1415_0721	SOIL	AUSTRALIAN SELECTION PTY LTD	MGA94_51	6764616	420234.6	438.8	No Data
A1415_0722	SOIL	AUSTRALIAN SELECTION PTY LTD	MGA94_51	6764616	420267.2	439.5	No Data
A1415_0723	SOIL	AUSTRALIAN SELECTION PTY LTD	MGA94_51	6764617	420300.7	440.4	No Data
A1415_0724	SOIL	AUSTRALIAN SELECTION PTY LTD	MGA94_51	6764618	420332.1	440.5	No Data
A1415_0725	SOIL	AUSTRALIAN SELECTION PTY LTD	MGA94_51	6764614	420360.1	440.3	No Data
A1415_0726	SOIL	AUSTRALIAN SELECTION PTY LTD	MGA94_51	6764615	420398.3	439.7	No Data
A1415_0727	SOIL	AUSTRALIAN SELECTION PTY LTD	MGA94_51	6764615	420424.5	439.4	No Data
A1415_0728	SOIL	AUSTRALIAN SELECTION PTY LTD	MGA94_51	6764615	420453.4	439	No Data
A1415_0729	SOIL	AUSTRALIAN SELECTION PTY LTD	MGA94_51	6764617	420485.6	438.8	No Data
A1415_0730	SOIL	AUSTRALIAN SELECTION PTY LTD	MGA94_51	6764615	420515.3	438.9	No Data
A1415_0731	SOIL	AUSTRALIAN SELECTION PTY LTD	MGA94_51	6764612	420556.8	439.1	No Data
A1415_0824	SOIL	AUSTRALIAN SELECTION PTY LTD	MGA94_51	6764297	419191.9	440.2	No Data
A1415_0825	SOIL	AUSTRALIAN SELECTION PTY LTD	MGA94_51	6764299	419225.4	441	No Data
A1415_0826	SOIL	AUSTRALIAN SELECTION PTY LTD	MGA94_51	6764300	419261.5	441.7	No Data
A1415_0827	SOIL	AUSTRALIAN SELECTION PTY LTD	MGA94_51	6764304	419292.8	442	No Data
A1415_0828	SOIL	AUSTRALIAN SELECTION PTY LTD	MGA94_51	6764306	419327.6	442.2	No Data
A1415_0829	SOIL	AUSTRALIAN SELECTION PTY LTD	MGA94_51	6764309	419361.5	442.2	No Data





SampleID	Sample Type	Company	Grid	Easting (m)	Northing (m)	RL (m)	Au_ppb
A1415_0830	SOIL	AUSTRALIAN SELECTION PTY LTD	MGA94_51	6764317	419398.9	442.3	No Data
A1415_0831	SOIL	AUSTRALIAN SELECTION PTY LTD	MGA94_51	6764316	419431.9	442.5	No Data
A1415_0832	SOIL	AUSTRALIAN SELECTION PTY LTD	MGA94_51	6764317	419462.9	442.4	No Data
A1415_0833	SOIL	AUSTRALIAN SELECTION PTY LTD	MGA94_51	6764320	419496.4	442.3	No Data
A1415_0834	SOIL	AUSTRALIAN SELECTION PTY LTD	MGA94_51	6764324	419530.7	442.7	No Data
A1415_0835	SOIL	AUSTRALIAN SELECTION PTY LTD	MGA94_51	6764326	419569.3	443.2	No Data
A1415_0836	SOIL	AUSTRALIAN SELECTION PTY LTD	MGA94_51	6764328	419598.6	443.1	No Data
A1415_0837	SOIL	AUSTRALIAN SELECTION PTY LTD	MGA94_51	6764332	419634.6	442.3	No Data
A1415_0838	SOIL	AUSTRALIAN SELECTION PTY LTD	MGA94_51	6764335	419668.1	441.5	No Data
A1415_0839	SOIL	AUSTRALIAN SELECTION PTY LTD	MGA94_51	6764334	419702	441.1	No Data
A1415_0840	SOIL	AUSTRALIAN SELECTION PTY LTD	MGA94_51	6764341	419735.9	440.9	No Data
A1415_0841	SOIL	AUSTRALIAN SELECTION PTY LTD	MGA94_51	6764344	419770.7	440.8	No Data
A1415_0842	SOIL	AUSTRALIAN SELECTION PTY LTD	MGA94_51	6764346	419804.6	440.6	No Data
A1415_0843	SOIL	AUSTRALIAN SELECTION PTY LTD	MGA94_51	6764351	419839	440.4	No Data
A1415_0844	SOIL	AUSTRALIAN SELECTION PTY LTD	MGA94_51	6764350	419872.1	439.8	No Data
A1415_0845	SOIL	AUSTRALIAN SELECTION PTY LTD	MGA94_51	6764352	419908.1	439	No Data
A1415_0846	SOIL	AUSTRALIAN SELECTION PTY LTD	MGA94_51	6764357	419939.5	438.3	No Data
A1415_0847	SOIL	AUSTRALIAN SELECTION PTY LTD	MGA94_51	6764352	419965.3	437.5	No Data
A1415_0848	SOIL	AUSTRALIAN SELECTION PTY LTD	MGA94_51	6764354	419999.3	436.7	No Data
A1415_0849	SOIL	AUSTRALIAN SELECTION PTY LTD	MGA94_51	6764355	420029.8	436.3	No Data
A1415_0850	SOIL	AUSTRALIAN SELECTION PTY LTD	MGA94_51	6764356	420064.6	435.9	No Data
A1415_0851	SOIL	AUSTRALIAN SELECTION PTY LTD	MGA94_51	6764358	420094.7	436	No Data
A1415_0852	SOIL	AUSTRALIAN SELECTION PTY LTD	MGA94_51	6764355	420123.1	436.4	No Data
A1415_0853	SOIL	AUSTRALIAN SELECTION PTY LTD	MGA94_51	6764355	420158.3	437	No Data
A1415_0854	SOIL	AUSTRALIAN SELECTION PTY LTD	MGA94_51	6764355	420193	437.4	No Data
A1415_0855	SOIL	AUSTRALIAN SELECTION PTY LTD	MGA94_51	6764356	420223.6	437.6	No Data
A1415_0856	SOIL	AUSTRALIAN SELECTION PTY LTD	MGA94_51	6764357	420257.5	437.8	No Data
A1415_0857	SOIL	AUSTRALIAN SELECTION PTY LTD	MGA94_51	6764356	420289.7	438.1	No Data
A1415_0858	SOIL	AUSTRALIAN SELECTION PTY LTD	MGA94_51	6764356	420322.4	438.6	No Data
A1415_0859	SOIL	AUSTRALIAN SELECTION PTY LTD	MGA94_51	6764355	420353.3	439.5	No Data
A1415_0860	SOIL	AUSTRALIAN SELECTION PTY LTD	MGA94_51	6764358	420388.1	440.4	No Data
A1415_0861	SOIL	AUSTRALIAN SELECTION PTY LTD	MGA94_51	6764359	420421.6	440.4	No Data
A1415_0862	SOIL	AUSTRALIAN SELECTION PTY LTD	MGA94_51	6764357	420450.8	439.8	No Data
A1415_0863	SOIL	AUSTRALIAN SELECTION PTY LTD	MGA94_51	6764360	420479.7	439.2	No Data
A1415_0864	SOIL	AUSTRALIAN SELECTION PTY LTD	MGA94_51	6764361	420514.4	439.2	No Data
A1415_0865	SOIL	AUSTRALIAN SELECTION PTY LTD	MGA94_51	6764362	420544.5	439.4	No Data
A1415_0866	SOIL	AUSTRALIAN SELECTION PTY LTD	MGA94_51	6764362	420578.9	439.5	No Data



SampleID	Sample Type	Company	Grid	Easting (m)	Northing (m)	RL (m)	Au_ppb
A1415_0867	SOIL	AUSTRALIAN SELECTION PTY LTD	MGA94_51	6764361	420610.3	439.7	No Data
A1415_0868	SOIL	AUSTRALIAN SELECTION PTY LTD	MGA94_51	6764361	420641.2	439.8	No Data
A1415_0869	SOIL	AUSTRALIAN SELECTION PTY LTD	MGA94_51	6764361	420679.4	440.1	No Data
A1415_0870	SOIL	AUSTRALIAN SELECTION PTY LTD	MGA94_51	6764361	420708.2	440.5	No Data
A1415_0871	SOIL	AUSTRALIAN SELECTION PTY LTD	MGA94_51	6764359	420736.6	441.1	No Data
A1415_0872	SOIL	AUSTRALIAN SELECTION PTY LTD	MGA94_51	6764360	420767.6	441.8	No Data
A1415_0873	SOIL	AUSTRALIAN SELECTION PTY LTD	MGA94_51	6764361	420807	442.6	No Data
A1415_0874	SOIL	AUSTRALIAN SELECTION PTY LTD	MGA94_51	6764364	420839.7	443	No Data
A1415_0875	SOIL	AUSTRALIAN SELECTION PTY LTD	MGA94_51	6764365	420877	443.4	No Data
A1415_0876	SOIL	AUSTRALIAN SELECTION PTY LTD	MGA94_51	6764365	420910.5	443.6	No Data
A1415_0877	SOIL	AUSTRALIAN SELECTION PTY LTD	MGA94_51	6764365	420943.1	443.6	No Data
A1415_0878	SOIL	AUSTRALIAN SELECTION PTY LTD	MGA94_51	6764367	420977.5	443.5	No Data
A1415_0879	SOIL	AUSTRALIAN SELECTION PTY LTD	MGA94_51	6764367	421013.5	443.4	No Data
A1415_0880	SOIL	AUSTRALIAN SELECTION PTY LTD	MGA94_51	6764373	421050	443.2	No Data
A1415_0881	SOIL	AUSTRALIAN SELECTION PTY LTD	MGA94_51	6764371	421078	443.3	No Data
A1415_0882	SOIL	AUSTRALIAN SELECTION PTY LTD	MGA94_51	6764372	421114.9	443.4	No Data
A1415_0883	SOIL	AUSTRALIAN SELECTION PTY LTD	MGA94_51	6764375	421152.2	443.6	No Data
A1415_0884	SOIL	AUSTRALIAN SELECTION PTY LTD	MGA94_51	6764381	421186.1	443.7	No Data
A1415_0885	SOIL	AUSTRALIAN SELECTION PTY LTD	MGA94_51	6764378	421221.3	443.9	No Data
A1415_0886	SOIL	AUSTRALIAN SELECTION PTY LTD	MGA94_51	6764377	421254.4	443.9	No Data
A1415_0887	SOIL	AUSTRALIAN SELECTION PTY LTD	MGA94_51	6764378	421288.3	443.9	No Data
A1415_0888	SOIL	AUSTRALIAN SELECTION PTY LTD	MGA94_51	6764380	421325.6	443.7	No Data
A1415_0889	SOIL	AUSTRALIAN SELECTION PTY LTD	MGA94_51	6764381	421359.9	443.7	No Data
A1415_0890	SOIL	AUSTRALIAN SELECTION PTY LTD	MGA94_51	6764386	421404	444	No Data
A1415_0891	SOIL	AUSTRALIAN SELECTION PTY LTD	MGA94_51	6764384	421429	444.5	No Data
A1415_0892	SOIL	AUSTRALIAN SELECTION PTY LTD	MGA94_51	6764384	421462.5	445.1	No Data
A1415_0893	SOIL	AUSTRALIAN SELECTION PTY LTD	MGA94_51	6764381	421494.8	446.1	No Data
A1415_0894	SOIL	AUSTRALIAN SELECTION PTY LTD	MGA94_51	6764383	421525.7	447.2	No Data
A1415_0895	SOIL	AUSTRALIAN SELECTION PTY LTD	MGA94_51	6764381	421557.5	448	No Data
A1415_0896	SOIL	AUSTRALIAN SELECTION PTY LTD	MGA94_51	6764378	421591.4	448.8	No Data
A1415_0897	SOIL	AUSTRALIAN SELECTION PTY LTD	MGA94_51	6764377	421626.2	449.4	No Data
A1415_0898	SOIL	AUSTRALIAN SELECTION PTY LTD	MGA94_51	6764378	421654.6	449.8	No Data
A1415_0899	SOIL	AUSTRALIAN SELECTION PTY LTD	MGA94_51	6764375	421682.6	450.1	No Data
A1415_0900	SOIL	AUSTRALIAN SELECTION PTY LTD	MGA94_51	6764378	421711.9	450	No Data
A1415_0901	SOIL	AUSTRALIAN SELECTION PTY LTD	MGA94_51	6764375	421739.4	449.4	No Data
A1415_0902	SOIL	AUSTRALIAN SELECTION PTY LTD	MGA94_51	6764373	421775.9	448.5	No Data
A1415_0903	SOIL	AUSTRALIAN SELECTION PTY LTD	MGA94_51	6764373	421805.6	448	No Data



SampleID	Sample Type	Company	Grid	Easting (m)	Northing (m)	RL (m)	Au_ppb
A1415_0904	SOIL	AUSTRALIAN SELECTION PTY LTD	MGA94_51	6764371	421837.8	447.5	No Data
A1415_0905	SOIL	AUSTRALIAN SELECTION PTY LTD	MGA94_51	6764370	421870	447	No Data
A1415_0906	SOIL	AUSTRALIAN SELECTION PTY LTD	MGA94_51	6764368	421900.6	446.6	No Data
A1415_0907	SOIL	AUSTRALIAN SELECTION PTY LTD	MGA94_51	6764367	421930.2	446.3	No Data
A1415_0908	SOIL	AUSTRALIAN SELECTION PTY LTD	MGA94_51	6764367	421965.4	445.9	No Data
A1415_0909	SOIL	AUSTRALIAN SELECTION PTY LTD	MGA94_51	6764364	421990.9	445.5	No Data
A1415_0910	SOIL	AUSTRALIAN SELECTION PTY LTD	MGA94_51	6764366	422015.9	445.2	No Data
A1415_0911	SOIL	AUSTRALIAN SELECTION PTY LTD	MGA94_51	6764364	422042.2	445.2	No Data
A1415_0912	SOIL	AUSTRALIAN SELECTION PTY LTD	MGA94_51	6764362	422074.4	445.5	No Data
A1415_0913	SOIL	AUSTRALIAN SELECTION PTY LTD	MGA94_51	6764361	422109.6	445.6	No Data
A1415_0914	SOIL	AUSTRALIAN SELECTION PTY LTD	MGA94_51	6764362	422140.1	445.7	No Data
A1415_0915	SOIL	AUSTRALIAN SELECTION PTY LTD	MGA94_51	6764361	422170.2	445.8	No Data
A1415_0916	SOIL	AUSTRALIAN SELECTION PTY LTD	MGA94_51	6764359	422201.2	445.8	No Data
A1415_0917	SOIL	AUSTRALIAN SELECTION PTY LTD	MGA94_51	6764361	422232.1	445.7	No Data
A1415_0918	SOIL	AUSTRALIAN SELECTION PTY LTD	MGA94_51	6764356	422264.8	445.6	No Data
A1415_0919	SOIL	AUSTRALIAN SELECTION PTY LTD	MGA94_51	6764360	422292.8	445.6	No Data
A1415_0920	SOIL	AUSTRALIAN SELECTION PTY LTD	MGA94_51	6764357	422319.9	445.5	No Data
A1415_0921	SOIL	AUSTRALIAN SELECTION PTY LTD	MGA94_51	6764356	422349.2	445.3	No Data
A1415_0922	SOIL	AUSTRALIAN SELECTION PTY LTD	MGA94_51	6764353	422379.3	445.1	No Data
A1415_0923	SOIL	AUSTRALIAN SELECTION PTY LTD	MGA94_51	6764350	422417	445	No Data
A1415_0924	SOIL	AUSTRALIAN SELECTION PTY LTD	MGA94_51	6764353	422448.4	445.2	No Data
A1415_0925	SOIL	AUSTRALIAN SELECTION PTY LTD	MGA94_51	6764352	422479.3	445.7	No Data
A1415_0926	SOIL	AUSTRALIAN SELECTION PTY LTD	MGA94_51	6764353	422514.1	446.4	No Data
A1415_0927	SOIL	AUSTRALIAN SELECTION PTY LTD	MGA94_51	6764353	422543.4	446.8	No Data
A1415_0928	SOIL	AUSTRALIAN SELECTION PTY LTD	MGA94_51	6764353	422576	447.2	No Data
A1415_0929	SOIL	AUSTRALIAN SELECTION PTY LTD	MGA94_51	6764350	422602.3	447.2	No Data
A1415_0930	SOIL	AUSTRALIAN SELECTION PTY LTD	MGA94_51	6764354	422629.4	447	No Data
A1415_0931	SOIL	AUSTRALIAN SELECTION PTY LTD	MGA94_51	6764353	422662.9	446.9	No Data
A1415_0932	SOIL	AUSTRALIAN SELECTION PTY LTD	MGA94_51	6764353	422696.4	446.9	No Data
A1415_0933	SOIL	AUSTRALIAN SELECTION PTY LTD	MGA94_51	6764351	422734.2	447	No Data
A1415_0934	SOIL	AUSTRALIAN SELECTION PTY LTD	MGA94_51	6764349	422768.9	447.2	No Data
A1415_0935	SOIL	AUSTRALIAN SELECTION PTY LTD	MGA94_51	6764351	422801.2	447.7	No Data
A1415_0936	SOIL	AUSTRALIAN SELECTION PTY LTD	MGA94_51	6764350	422834.2	448.2	No Data
A1415_0937	SOIL	AUSTRALIAN SELECTION PTY LTD	MGA94_51	6764350	422862.7	448.6	No Data
A1415_0938	SOIL	AUSTRALIAN SELECTION PTY LTD	MGA94_51	6764348	422897.8	448.9	No Data
A1415_0939	SOIL	AUSTRALIAN SELECTION PTY LTD	MGA94_51	6764347	422929.6	448.9	No Data
A1415_0940	SOIL	AUSTRALIAN SELECTION PTY LTD	MGA94_51	6764348	422966.5	448.8	No Data





SampleID	Sample Type	Company	Grid	Easting (m)	Northing (m)	RL (m)	Au_ppb
A1415_0941	SOIL	AUSTRALIAN SELECTION PTY LTD	MGA94_51	6764348	423002.6	448.5	No Data
A1415_0942	SOIL	AUSTRALIAN SELECTION PTY LTD	MGA94_51	6764346	423037.8	448	No Data
A1415_0943	SOIL	AUSTRALIAN SELECTION PTY LTD	MGA94_51	6764346	423068.3	447.7	No Data
A1415_0944	SOIL	AUSTRALIAN SELECTION PTY LTD	MGA94_51	6764347	423099.7	447.8	No Data
A1415_0945	SOIL	AUSTRALIAN SELECTION PTY LTD	MGA94_51	6764347	423130.2	448.1	No Data
A1415_0946	SOIL	AUSTRALIAN SELECTION PTY LTD	MGA94_51	6764347	423163.3	448.4	No Data
A1415_0954	SOIL	AUSTRALIAN SELECTION PTY LTD	MGA94_51	6764123	419193.6	437.9	No Data
A1415_0955	SOIL	AUSTRALIAN SELECTION PTY LTD	MGA94_51	6764124	419230.9	438	No Data
A1415_0956	SOIL	AUSTRALIAN SELECTION PTY LTD	MGA94_51	6764122	419261.5	438.2	No Data
A1415_0957	SOIL	AUSTRALIAN SELECTION PTY LTD	MGA94_51	6764121	419292.8	438.6	No Data
A1415_0958	SOIL	AUSTRALIAN SELECTION PTY LTD	MGA94_51	6764123	419328.5	439.1	No Data
A1415_0959	SOIL	AUSTRALIAN SELECTION PTY LTD	MGA94_51	6764119	419359.8	439.5	No Data
A1415_0960	SOIL	AUSTRALIAN SELECTION PTY LTD	MGA94_51	6764124	419400.1	439.5	No Data
A1415_0961	SOIL	AUSTRALIAN SELECTION PTY LTD	MGA94_51	6764121	419430.7	439.7	No Data
A1415_0962	SOIL	AUSTRALIAN SELECTION PTY LTD	MGA94_51	6764119	419460.8	440.3	No Data
A1415_0963	SOIL	AUSTRALIAN SELECTION PTY LTD	MGA94_51	6764119	419496.4	441.1	No Data
A1415_0964	SOIL	AUSTRALIAN SELECTION PTY LTD	MGA94_51	6764120	419529.9	441.6	No Data
A1415_0965	SOIL	AUSTRALIAN SELECTION PTY LTD	MGA94_51	6764119	419561.7	441.7	No Data
A1415_0966	SOIL	AUSTRALIAN SELECTION PTY LTD	MGA94_51	6764119	419596.9	441.2	No Data
A1415_0967	SOIL	AUSTRALIAN SELECTION PTY LTD	MGA94_51	6764119	419629.9	440	No Data
A1415_0968	SOIL	AUSTRALIAN SELECTION PTY LTD	MGA94_51	6764118	419663.4	438.5	No Data
A1415_0969	SOIL	AUSTRALIAN SELECTION PTY LTD	MGA94_51	6764116	419695.7	437.5	No Data
A1415_0970	SOIL	AUSTRALIAN SELECTION PTY LTD	MGA94_51	6764118	419731.7	436.8	No Data
A1415_0971	SOIL	AUSTRALIAN SELECTION PTY LTD	MGA94_51	6764116	419763.5	436.4	No Data
A1415_0972	SOIL	AUSTRALIAN SELECTION PTY LTD	MGA94_51	6764112	419799.1	436.1	No Data
A1415_0973	SOIL	AUSTRALIAN SELECTION PTY LTD	MGA94_51	6764113	419832.2	436	No Data
A1415_0974	SOIL	AUSTRALIAN SELECTION PTY LTD	MGA94_51	6764113	419863.6	435.8	No Data
A1415_0975	SOIL	AUSTRALIAN SELECTION PTY LTD	MGA94_51	6764114	419896.6	435.8	No Data
A1415_0976	SOIL	AUSTRALIAN SELECTION PTY LTD	MGA94_51	6764114	419931	435.8	No Data
A1415_0977	SOIL	AUSTRALIAN SELECTION PTY LTD	MGA94_51	6764109	419961.9	435.6	No Data
A1415_0978	SOIL	AUSTRALIAN SELECTION PTY LTD	MGA94_51	6764109	419998.4	435.5	No Data
A1415_0979	SOIL	AUSTRALIAN SELECTION PTY LTD	MGA94_51	6764109	420030.2	435.8	No Data
A1415_0980	SOIL	AUSTRALIAN SELECTION PTY LTD	MGA94_51	6764110	420062.4	436.3	No Data
A1415_0981	SOIL	AUSTRALIAN SELECTION PTY LTD	MGA94_51	6764110	420094.7	436.5	No Data
A1415_0982	SOIL	AUSTRALIAN SELECTION PTY LTD	MGA94_51	6764111	420132.4	436.7	No Data
A1415_0983	SOIL	AUSTRALIAN SELECTION PTY LTD	MGA94_51	6764109	420161.7	436.9	No Data
A1415_0984	SOIL	AUSTRALIAN SELECTION PTY LTD	MGA94_51	6764109	420196.4	437.7	No Data



SampleID	Sample Type	Company	Grid	Easting (m)	Northing (m)	RL (m)	Au_ppb
A1415_0985	SOIL	AUSTRALIAN SELECTION PTY LTD	MGA94_51	6764110	420229.5	438.8	No Data
A1415_0986	SOIL	AUSTRALIAN SELECTION PTY LTD	MGA94_51	6764108	420264.7	439.9	No Data
A1415_0987	SOIL	AUSTRALIAN SELECTION PTY LTD	MGA94_51	6764108	420298.2	440.9	No Data
A1415_0988	SOIL	AUSTRALIAN SELECTION PTY LTD	MGA94_51	6764109	420329.6	441.3	No Data
A1415_0989	SOIL	AUSTRALIAN SELECTION PTY LTD	MGA94_51	6764109	420364.3	441.4	No Data
A1415_0990	SOIL	AUSTRALIAN SELECTION PTY LTD	MGA94_51	6764110	420398.3	441.3	No Data
A1415_0991	SOIL	AUSTRALIAN SELECTION PTY LTD	MGA94_51	6764111	420429.2	441.3	No Data
A1415_0992	SOIL	AUSTRALIAN SELECTION PTY LTD	MGA94_51	6764113	420460.6	441.3	No Data
A1415_0993	SOIL	AUSTRALIAN SELECTION PTY LTD	MGA94_51	6764113	420494.1	441.4	No Data
A1415_0994	SOIL	AUSTRALIAN SELECTION PTY LTD	MGA94_51	6764112	420526.3	441.7	No Data
A1415_0995	SOIL	AUSTRALIAN SELECTION PTY LTD	MGA94_51	6764113	420561.5	441.9	No Data
A1415_0996	SOIL	AUSTRALIAN SELECTION PTY LTD	MGA94_51	6764113	420598.4	442.1	No Data
A1415_0997	SOIL	AUSTRALIAN SELECTION PTY LTD	MGA94_51	6764112	420632.7	442.2	No Data
A1415_0998	SOIL	AUSTRALIAN SELECTION PTY LTD	MGA94_51	6764114	420663.3	442.6	No Data
A1415_0999	SOIL	AUSTRALIAN SELECTION PTY LTD	MGA94_51	6764114	420695.5	443.4	No Data
A1415_1000	SOIL	AUSTRALIAN SELECTION PTY LTD	MGA94_51	6764111	420730.7	444.2	No Data
A1415_1001	SOIL	AUSTRALIAN SELECTION PTY LTD	MGA94_51	6764113	420771	445	No Data
A1415_1002	SOIL	AUSTRALIAN SELECTION PTY LTD	MGA94_51	6764113	420804	445.6	No Data
A1415_1003	SOIL	AUSTRALIAN SELECTION PTY LTD	MGA94_51	6764114	420838.8	446.5	No Data
A1415_1004	SOIL	AUSTRALIAN SELECTION PTY LTD	MGA94_51	6764116	420876.1	447.8	No Data
A1415_1005	SOIL	AUSTRALIAN SELECTION PTY LTD	MGA94_51	6764114	420913.4	448.8	No Data
A1415_1006	SOIL	AUSTRALIAN SELECTION PTY LTD	MGA94_51	6764114	420944.8	449.6	No Data
A1415_1007	SOIL	AUSTRALIAN SELECTION PTY LTD	MGA94_51	6764115	420979.2	449.9	No Data
A1415_1008	SOIL	AUSTRALIAN SELECTION PTY LTD	MGA94_51	6764115	421016.9	449.7	No Data
A1415_1009	SOIL	AUSTRALIAN SELECTION PTY LTD	MGA94_51	6764115	421050.4	449.3	No Data
A1415_1010	SOIL	AUSTRALIAN SELECTION PTY LTD	MGA94_51	6764114	421088.6	448.3	No Data
A1415_1011	SOIL	AUSTRALIAN SELECTION PTY LTD	MGA94_51	6764116	421126.3	447.5	No Data
A1415_1012	SOIL	AUSTRALIAN SELECTION PTY LTD	MGA94_51	6764117	421162.8	447.2	No Data
A1415_1013	SOIL	AUSTRALIAN SELECTION PTY LTD	MGA94_51	6764116	421195.4	447.2	No Data
A1415_1014	SOIL	AUSTRALIAN SELECTION PTY LTD	MGA94_51	6764116	421231.9	447.9	No Data
A1415_1015	SOIL	AUSTRALIAN SELECTION PTY LTD	MGA94_51	6764116	421269.6	449.2	No Data
A1415_1016	SOIL	AUSTRALIAN SELECTION PTY LTD	MGA94_51	6764111	421304.8	450.1	No Data
A1415_1017	SOIL	AUSTRALIAN SELECTION PTY LTD	MGA94_51	6764112	421339.2	450.7	No Data
A1415_1018	SOIL	AUSTRALIAN SELECTION PTY LTD	MGA94_51	6764110	421373.5	450.8	No Data
A1415_1019	SOIL	AUSTRALIAN SELECTION PTY LTD	MGA94_51	6764112	421407.4	450.4	No Data
A1415_1020	SOIL	AUSTRALIAN SELECTION PTY LTD	MGA94_51	6764107	421444.3	449.7	No Data
A1415_1021	SOIL	AUSTRALIAN SELECTION PTY LTD	MGA94_51	6764101	421472.3	449.4	No Data



SampleID	Sample Type	Company	Grid	Easting (m)	Northing (m)	RL (m)	Au_ppb
A1415_1022	SOIL	AUSTRALIAN SELECTION PTY LTD	MGA94_51	6764103	421503.3	449.2	No Data
A1415_1023	SOIL	AUSTRALIAN SELECTION PTY LTD	MGA94_51	6764102	421535.9	449.1	No Data
A1415_1024	SOIL	AUSTRALIAN SELECTION PTY LTD	MGA94_51	6764101	421566.4	449	No Data
A1415_1025	SOIL	AUSTRALIAN SELECTION PTY LTD	MGA94_51	6764102	421597.4	448.8	No Data
A1415_1026	SOIL	AUSTRALIAN SELECTION PTY LTD	MGA94_51	6764102	421634.7	448.8	No Data
A1415_1027	SOIL	AUSTRALIAN SELECTION PTY LTD	MGA94_51	6764101	421669.9	449	No Data
A1415_1028	SOIL	AUSTRALIAN SELECTION PTY LTD	MGA94_51	6764100	421695.3	449.3	No Data
A1415_1029	SOIL	AUSTRALIAN SELECTION PTY LTD	MGA94_51	6764099	421727.6	449.7	No Data
A1415_1030	SOIL	AUSTRALIAN SELECTION PTY LTD	MGA94_51	6764101	421757.7	450.1	No Data
A1415_1031	SOIL	AUSTRALIAN SELECTION PTY LTD	MGA94_51	6764099	421790.7	450	No Data
A1415_1032	SOIL	AUSTRALIAN SELECTION PTY LTD	MGA94_51	6764102	421820.8	449.6	No Data
A1415_1033	SOIL	AUSTRALIAN SELECTION PTY LTD	MGA94_51	6764097	421851.4	449.1	No Data
A1415_1034	SOIL	AUSTRALIAN SELECTION PTY LTD	MGA94_51	6764097	421887.4	448.5	No Data
A1415_1035	SOIL	AUSTRALIAN SELECTION PTY LTD	MGA94_51	6764099	421917.1	447.9	No Data
A1415_1036	SOIL	AUSTRALIAN SELECTION PTY LTD	MGA94_51	6764099	421952.7	447.3	No Data
A1415_1037	SOIL	AUSTRALIAN SELECTION PTY LTD	MGA94_51	6764099	421984.5	446.6	No Data
A1415_1038	SOIL	AUSTRALIAN SELECTION PTY LTD	MGA94_51	6764096	422012.1	445.9	No Data
A1415_1039	SOIL	AUSTRALIAN SELECTION PTY LTD	MGA94_51	6764096	422044.7	445.4	No Data
A1415_1040	SOIL	AUSTRALIAN SELECTION PTY LTD	MGA94_51	6764097	422076.9	444.8	No Data
A1415_1041	SOIL	AUSTRALIAN SELECTION PTY LTD	MGA94_51	6764094	422111.3	444.2	No Data
A1415_1042	SOIL	AUSTRALIAN SELECTION PTY LTD	MGA94_51	6764096	422143.5	444	No Data
A1415_1043	SOIL	AUSTRALIAN SELECTION PTY LTD	MGA94_51	6764096	422176.2	443.7	No Data
A1415_1044	SOIL	AUSTRALIAN SELECTION PTY LTD	MGA94_51	6764094	422207.1	443.1	No Data
A1415_1045	SOIL	AUSTRALIAN SELECTION PTY LTD	MGA94_51	6764095	422238.5	442.6	No Data
A1415_1046	SOIL	AUSTRALIAN SELECTION PTY LTD	MGA94_51	6764094	422272	442.4	No Data
A1415_1047	SOIL	AUSTRALIAN SELECTION PTY LTD	MGA94_51	6764094	422302.1	442.7	No Data
A1415_1048	SOIL	AUSTRALIAN SELECTION PTY LTD	MGA94_51	6764094	422332.6	443.1	No Data
A1415_1049	SOIL	AUSTRALIAN SELECTION PTY LTD	MGA94_51	6764093	422363.6	443.3	No Data
A1415_1050	SOIL	AUSTRALIAN SELECTION PTY LTD	MGA94_51	6764095	422394.1	443.2	No Data
A1415_1084	SOIL	AUSTRALIAN SELECTION PTY LTD	MGA94_51	6763771	419240.3	437.6	No Data
A1415_1085	SOIL	AUSTRALIAN SELECTION PTY LTD	MGA94_51	6763771	419272.9	437.1	No Data
A1415_1086	SOIL	AUSTRALIAN SELECTION PTY LTD	MGA94_51	6763772	419304.3	436.9	No Data
A1415_1087	SOIL	AUSTRALIAN SELECTION PTY LTD	MGA94_51	6763773	419336.5	436.7	No Data
A1415_1088	SOIL	AUSTRALIAN SELECTION PTY LTD	MGA94_51	6763772	419367.9	436.5	No Data
A1415_1089	SOIL	AUSTRALIAN SELECTION PTY LTD	MGA94_51	6763773	419398	436.2	No Data
A1415_1090	SOIL	AUSTRALIAN SELECTION PTY LTD	MGA94_51	6763773	419433.6	436.1	No Data
A1415_1091	SOIL	AUSTRALIAN SELECTION PTY LTD	MGA94_51	6763773	419466.3	436.1	No Data





SampleID	Sample Type	Company	Grid	Easting (m)	Northing (m)	RL (m)	Au_ppb
A1415_1092	SOIL	AUSTRALIAN SELECTION PTY LTD	MGA94_51	6763771	419497.2	436.1	No Data
A1415_1093	SOIL	AUSTRALIAN SELECTION PTY LTD	MGA94_51	6763773	419531.1	436.3	No Data
A1415_1094	SOIL	AUSTRALIAN SELECTION PTY LTD	MGA94_51	6763771	419563.4	436.6	No Data
A1415_1095	SOIL	AUSTRALIAN SELECTION PTY LTD	MGA94_51	6763773	419596.4	436.8	No Data
A1415_1096	SOIL	AUSTRALIAN SELECTION PTY LTD	MGA94_51	6763771	419629.5	436.6	No Data
A1415_1097	SOIL	AUSTRALIAN SELECTION PTY LTD	MGA94_51	6763768	419660	436.2	No Data
A1415_1098	SOIL	AUSTRALIAN SELECTION PTY LTD	MGA94_51	6763773	419696.1	435.8	No Data
A1415_1099	SOIL	AUSTRALIAN SELECTION PTY LTD	MGA94_51	6763773	419733.4	435	No Data
A1415_1100	SOIL	AUSTRALIAN SELECTION PTY LTD	MGA94_51	6763775	419761.4	434.5	No Data
A1415_1101	SOIL	AUSTRALIAN SELECTION PTY LTD	MGA94_51	6763776	419792.3	434.1	No Data
A1415_1102	SOIL	AUSTRALIAN SELECTION PTY LTD	MGA94_51	6763774	419822	433.8	No Data
A1415_1103	SOIL	AUSTRALIAN SELECTION PTY LTD	MGA94_51	6763775	419856.4	433.7	No Data
A1415_1104	SOIL	AUSTRALIAN SELECTION PTY LTD	MGA94_51	6763774	419887.7	433.8	No Data
A1415_1105	SOIL	AUSTRALIAN SELECTION PTY LTD	MGA94_51	6763774	419925.9	434.1	No Data
A1415_1106	SOIL	AUSTRALIAN SELECTION PTY LTD	MGA94_51	6763776	419958.1	434.4	No Data
A1415_1107	SOIL	AUSTRALIAN SELECTION PTY LTD	MGA94_51	6763771	419991.6	434.7	No Data
A1415_1108	SOIL	AUSTRALIAN SELECTION PTY LTD	MGA94_51	6763772	420018.8	434.7	No Data
A1415_1109	SOIL	AUSTRALIAN SELECTION PTY LTD	MGA94_51	6763778	420054.8	434.6	No Data
A1415_1110	SOIL	AUSTRALIAN SELECTION PTY LTD	MGA94_51	6763777	420084.1	434.7	No Data
A1415_1111	SOIL	AUSTRALIAN SELECTION PTY LTD	MGA94_51	6763775	420113.7	434.9	No Data
A1415_1112	SOIL	AUSTRALIAN SELECTION PTY LTD	MGA94_51	6763776	420146	435.2	No Data
A1415_1113	SOIL	AUSTRALIAN SELECTION PTY LTD	MGA94_51	6763775	420177.8	435.5	No Data
A1415_1114	SOIL	AUSTRALIAN SELECTION PTY LTD	MGA94_51	6763775	420207.9	435.7	No Data
A1415_1115	SOIL	AUSTRALIAN SELECTION PTY LTD	MGA94_51	6763775	420240.1	436	No Data
A1415_1116	SOIL	AUSTRALIAN SELECTION PTY LTD	MGA94_51	6763776	420272.3	436.5	No Data
A1415_1117	SOIL	AUSTRALIAN SELECTION PTY LTD	MGA94_51	6763774	420302.9	437.1	No Data
A1415_1118	SOIL	AUSTRALIAN SELECTION PTY LTD	MGA94_51	6763776	420334.2	437.6	No Data
A1415_1119	SOIL	AUSTRALIAN SELECTION PTY LTD	MGA94_51	6763777	420371.1	438.2	No Data
A1415_1120	SOIL	AUSTRALIAN SELECTION PTY LTD	MGA94_51	6763775	420399.1	438.6	No Data
A1415_1121	SOIL	AUSTRALIAN SELECTION PTY LTD	MGA94_51	6763774	420427.5	439.2	No Data
A1415_1122	SOIL	AUSTRALIAN SELECTION PTY LTD	MGA94_51	6763776	420459.3	440.1	No Data
A1415_1123	SOIL	AUSTRALIAN SELECTION PTY LTD	MGA94_51	6763777	420491.5	440.8	No Data
A1415_1124	SOIL	AUSTRALIAN SELECTION PTY LTD	MGA94_51	6763778	420524.2	441.6	No Data
A1415_1125	SOIL	AUSTRALIAN SELECTION PTY LTD	MGA94_51	6763776	420551.3	442.2	No Data
A1415_1126	SOIL	AUSTRALIAN SELECTION PTY LTD	MGA94_51	6763776	420584	442.6	No Data
A1415_1127	SOIL	AUSTRALIAN SELECTION PTY LTD	MGA94_51	6763777	420617.1	443.1	No Data
A1415_1128	SOIL	AUSTRALIAN SELECTION PTY LTD	MGA94_51	6763773	420646.7	443.3	No Data



SampleID	Sample Type	Company	Grid	Easting (m)	Northing (m)	RL (m)	Au_ppb
A1415_1213	SOIL	AUSTRALIAN SELECTION PTY LTD	MGA94_51	6763469	419277.2	434.7	No Data
A1415_1214	SOIL	AUSTRALIAN SELECTION PTY LTD	MGA94_51	6763469	419307.3	435.1	No Data
A1415_1215	SOIL	AUSTRALIAN SELECTION PTY LTD	MGA94_51	6763468	419341.2	435.5	No Data
A1415_1216	SOIL	AUSTRALIAN SELECTION PTY LTD	MGA94_51	6763469	419371.3	435.5	No Data
A1415_1217	SOIL	AUSTRALIAN SELECTION PTY LTD	MGA94_51	6763471	419401	434.9	No Data
A1415_1218	SOIL	AUSTRALIAN SELECTION PTY LTD	MGA94_51	6763470	419433.2	434.2	No Data
A1415_1219	SOIL	AUSTRALIAN SELECTION PTY LTD	MGA94_51	6763471	419465.4	433.6	No Data
A1415_1220	SOIL	AUSTRALIAN SELECTION PTY LTD	MGA94_51	6763478	419496.4	433.4	No Data
A1415_1221	SOIL	AUSTRALIAN SELECTION PTY LTD	MGA94_51	6763480	419533.7	433.4	No Data
A1415_1222	SOIL	AUSTRALIAN SELECTION PTY LTD	MGA94_51	6763480	419570.2	433.4	No Data
A1415_1223	SOIL	AUSTRALIAN SELECTION PTY LTD	MGA94_51	6763483	419604.9	433.5	No Data
A1415_1224	SOIL	AUSTRALIAN SELECTION PTY LTD	MGA94_51	6763481	419639.7	433.7	No Data
A1415_1225	SOIL	AUSTRALIAN SELECTION PTY LTD	MGA94_51	6763482	419670.2	433.8	No Data
A1415_1226	SOIL	AUSTRALIAN SELECTION PTY LTD	MGA94_51	6763483	419705	433.8	No Data
A1415_1227	SOIL	AUSTRALIAN SELECTION PTY LTD	MGA94_51	6763483	419740.2	433.6	No Data
A1415_1228	SOIL	AUSTRALIAN SELECTION PTY LTD	MGA94_51	6763483	419774.5	433.5	No Data
A1415_1229	SOIL	AUSTRALIAN SELECTION PTY LTD	MGA94_51	6763486	419805.1	433.2	No Data
A1415_1230	SOIL	AUSTRALIAN SELECTION PTY LTD	MGA94_51	6763485	419845.3	432.9	No Data
A1415_1231	SOIL	AUSTRALIAN SELECTION PTY LTD	MGA94_51	6763485	419871.2	432.8	No Data
A1415_1232	SOIL	AUSTRALIAN SELECTION PTY LTD	MGA94_51	6763485	419897.5	432.7	No Data
A1415_1233	SOIL	AUSTRALIAN SELECTION PTY LTD	MGA94_51	6763484	419928.4	432.6	No Data
A1415_1234	SOIL	AUSTRALIAN SELECTION PTY LTD	MGA94_51	6763482	419961.9	432.3	No Data
A1415_1235	SOIL	AUSTRALIAN SELECTION PTY LTD	MGA94_51	6763484	419991.6	432.2	No Data
A1415_1236	SOIL	AUSTRALIAN SELECTION PTY LTD	MGA94_51	6763485	420023	432.3	No Data
A1415_1237	SOIL	AUSTRALIAN SELECTION PTY LTD	MGA94_51	6763484	420052.7	432.4	No Data
A1415_1238	SOIL	AUSTRALIAN SELECTION PTY LTD	MGA94_51	6763484	420085.8	432.5	No Data
A1415_1239	SOIL	AUSTRALIAN SELECTION PTY LTD	MGA94_51	6763484	420118.8	432.6	No Data
A1415_1240	SOIL	AUSTRALIAN SELECTION PTY LTD	MGA94_51	6763484	420147.7	432.9	No Data
A1415_1241	SOIL	AUSTRALIAN SELECTION PTY LTD	MGA94_51	6763484	420179.9	433.5	No Data
A1415_1242	SOIL	AUSTRALIAN SELECTION PTY LTD	MGA94_51	6763484	420211.7	434.5	No Data
A1415_1243	SOIL	AUSTRALIAN SELECTION PTY LTD	MGA94_51	6763483	420245.2	435.6	No Data
A1415_1244	SOIL	AUSTRALIAN SELECTION PTY LTD	MGA94_51	6763482	420274	436.4	No Data
A1415_1245	SOIL	AUSTRALIAN SELECTION PTY LTD	MGA94_51	6763482	420308.8	437.4	No Data
A1415_1246	SOIL	AUSTRALIAN SELECTION PTY LTD	MGA94_51	6763483	420342.3	438	No Data
A1415_1247	SOIL	AUSTRALIAN SELECTION PTY LTD	MGA94_51	6763481	420369.9	438.4	No Data
A1415_1248	SOIL	AUSTRALIAN SELECTION PTY LTD	MGA94_51	6763480	420402.9	438.5	No Data
A1415_1249	SOIL	AUSTRALIAN SELECTION PTY LTD	MGA94_51	6763481	420435.2	438.3	No Data



SampleID	Sample Type	Company	Grid	Easting (m)	Northing (m)	RL (m)	Au_ppb
A1415_1250	SOIL	AUSTRALIAN SELECTION PTY LTD	MGA94_51	6763480	420459.7	438.2	No Data
A1415_1251	SOIL	AUSTRALIAN SELECTION PTY LTD	MGA94_51	6763482	420486	438.2	No Data
A1415_1291	SOIL	AUSTRALIAN SELECTION PTY LTD	MGA94_51	6763284	419219.7	434.8	No Data
A1415_1292	SOIL	AUSTRALIAN SELECTION PTY LTD	MGA94_51	6763286	419249.4	434.3	No Data
A1415_1293	SOIL	AUSTRALIAN SELECTION PTY LTD	MGA94_51	6763284	419279.5	433.9	No Data
A1415_1294	SOIL	AUSTRALIAN SELECTION PTY LTD	MGA94_51	6763283	419312.1	433.5	No Data
A1415_1295	SOIL	AUSTRALIAN SELECTION PTY LTD	MGA94_51	6763283	419349.5	433.2	No Data
A1415_1296	SOIL	AUSTRALIAN SELECTION PTY LTD	MGA94_51	6763284	419376.6	433.2	No Data
A1415_1297	SOIL	AUSTRALIAN SELECTION PTY LTD	MGA94_51	6763280	419406.7	433.4	No Data
A1415_1298	SOIL	AUSTRALIAN SELECTION PTY LTD	MGA94_51	6763281	419438.1	433.5	No Data
A1415_1299	SOIL	AUSTRALIAN SELECTION PTY LTD	MGA94_51	6763279	419466.1	433.5	No Data
A1415_1300	SOIL	AUSTRALIAN SELECTION PTY LTD	MGA94_51	6763278	419499.6	433.2	No Data
A1415_1301	SOIL	AUSTRALIAN SELECTION PTY LTD	MGA94_51	6763279	419533.1	432.9	No Data
A1415_1302	SOIL	AUSTRALIAN SELECTION PTY LTD	MGA94_51	6763277	419561.5	432.8	No Data
A1415_1303	SOIL	AUSTRALIAN SELECTION PTY LTD	MGA94_51	6763277	419595.4	432.7	No Data
A1415_1304	SOIL	AUSTRALIAN SELECTION PTY LTD	MGA94_51	6763277	419627.2	432.6	No Data
A1415_1305	SOIL	AUSTRALIAN SELECTION PTY LTD	MGA94_51	6763277	419665.8	432.6	No Data
A1415_1306	SOIL	AUSTRALIAN SELECTION PTY LTD	MGA94_51	6763276	419691.6	432.4	No Data
A1415_1307	SOIL	AUSTRALIAN SELECTION PTY LTD	MGA94_51	6763276	419717.1	432.3	No Data
A1415_1308	SOIL	AUSTRALIAN SELECTION PTY LTD	MGA94_51	6763272	419751	432	No Data
A1415_1309	SOIL	AUSTRALIAN SELECTION PTY LTD	MGA94_51	6763270	419780.7	431.9	No Data
A1415_1310	SOIL	AUSTRALIAN SELECTION PTY LTD	MGA94_51	6763270	419812.5	431.7	No Data
A1415_1311	SOIL	AUSTRALIAN SELECTION PTY LTD	MGA94_51	6763271	419844.3	431.7	No Data
A1415_1312	SOIL	AUSTRALIAN SELECTION PTY LTD	MGA94_51	6763269	419878.2	431.9	No Data
A1415_1313	SOIL	AUSTRALIAN SELECTION PTY LTD	MGA94_51	6763268	419905.3	432.2	No Data
A1415_1314	SOIL	AUSTRALIAN SELECTION PTY LTD	MGA94_51	6763267	419938	432.5	No Data
A1415_1315	SOIL	AUSTRALIAN SELECTION PTY LTD	MGA94_51	6763266	419965.6	432.8	No Data
A1415_1316	SOIL	AUSTRALIAN SELECTION PTY LTD	MGA94_51	6763265	419998.2	433	No Data
A1415_1317	SOIL	AUSTRALIAN SELECTION PTY LTD	MGA94_51	6763266	420030	433.3	No Data
A1415_1318	SOIL	AUSTRALIAN SELECTION PTY LTD	MGA94_51	6763267	420063.1	433.7	No Data
A1415_1319	SOIL	AUSTRALIAN SELECTION PTY LTD	MGA94_51	6763265	420094.5	434	No Data
A1415_1320	SOIL	AUSTRALIAN SELECTION PTY LTD	MGA94_51	6763266	420126.7	434.6	No Data
A1415_1321	SOIL	AUSTRALIAN SELECTION PTY LTD	MGA94_51	6763266	420161	435.2	No Data
A1415_1322	SOIL	AUSTRALIAN SELECTION PTY LTD	MGA94_51	6763264	420189.9	435.8	No Data
A1415_1323	SOIL	AUSTRALIAN SELECTION PTY LTD	MGA94_51	6763266	420221.2	436.5	No Data
A1415_1324	SOIL	AUSTRALIAN SELECTION PTY LTD	MGA94_51	6763265	420256.9	437.2	No Data
A1415_1325	SOIL	AUSTRALIAN SELECTION PTY LTD	MGA94_51	6763265	420290.8	437.6	No Data





SampleID	Sample Type	Company	Grid	Easting (m)	Northing (m)	RL (m)	Au_ppb
A1415_1326	SOIL	AUSTRALIAN SELECTION PTY LTD	MGA94_51	6763264	420319.2	437.7	No Data
A1415_1327	SOIL	AUSTRALIAN SELECTION PTY LTD	MGA94_51	6763264	420348.9	437.9	No Data
A1415_1328	SOIL	AUSTRALIAN SELECTION PTY LTD	MGA94_51	6763264	420382.4	438	No Data
A1415_1329	SOIL	AUSTRALIAN SELECTION PTY LTD	MGA94_51	6763263	420414.2	438.1	No Data
A1415_1370	SOIL	AUSTRALIAN SELECTION PTY LTD	MGA94_51	6763067	419229	436.4	No Data
A1415_1371	SOIL	AUSTRALIAN SELECTION PTY LTD	MGA94_51	6763067	419256.6	435.9	No Data
A1415_1372	SOIL	AUSTRALIAN SELECTION PTY LTD	MGA94_51	6763068	419289.2	435.3	No Data
A1415_1373	SOIL	AUSTRALIAN SELECTION PTY LTD	MGA94_51	6763068	419321.9	434.4	No Data
A1415_1374	SOIL	AUSTRALIAN SELECTION PTY LTD	MGA94_51	6763068	419354.5	433.7	No Data
A1415_1375	SOIL	AUSTRALIAN SELECTION PTY LTD	MGA94_51	6763067	419385.5	433.2	No Data
A1415_1376	SOIL	AUSTRALIAN SELECTION PTY LTD	MGA94_51	6763067	419416.4	432.8	No Data
A1415_1377	SOIL	AUSTRALIAN SELECTION PTY LTD	MGA94_51	6763066	419447.8	432.4	No Data
A1415_1378	SOIL	AUSTRALIAN SELECTION PTY LTD	MGA94_51	6763066	419479.2	432.1	No Data
A1415_1379	SOIL	AUSTRALIAN SELECTION PTY LTD	MGA94_51	6763066	419512.3	431.9	No Data
A1415_1380	SOIL	AUSTRALIAN SELECTION PTY LTD	MGA94_51	6763067	419543.2	431.8	No Data
A1415_1381	SOIL	AUSTRALIAN SELECTION PTY LTD	MGA94_51	6763067	419578	431.7	No Data
A1415_1382	SOIL	AUSTRALIAN SELECTION PTY LTD	MGA94_51	6763064	419608.1	431.4	No Data
A1415_1383	SOIL	AUSTRALIAN SELECTION PTY LTD	MGA94_51	6763067	419637.8	431.1	No Data
A1415_1384	SOIL	AUSTRALIAN SELECTION PTY LTD	MGA94_51	6763067	419673	430.9	No Data
A1415_1385	SOIL	AUSTRALIAN SELECTION PTY LTD	MGA94_51	6763065	419702.7	430.8	No Data
A1415_1386	SOIL	AUSTRALIAN SELECTION PTY LTD	MGA94_51	6763066	419731.9	430.8	No Data
A1415_1387	SOIL	AUSTRALIAN SELECTION PTY LTD	MGA94_51	6763066	419765	430.8	No Data
A1415_1388	SOIL	AUSTRALIAN SELECTION PTY LTD	MGA94_51	6763063	419797.6	430.6	No Data
A1415_1389	SOIL	AUSTRALIAN SELECTION PTY LTD	MGA94_51	6763066	419827.7	430.6	No Data
A1415_1390	SOIL	AUSTRALIAN SELECTION PTY LTD	MGA94_51	6763065	419860.8	430.6	No Data
A1415_1391	SOIL	AUSTRALIAN SELECTION PTY LTD	MGA94_51	6763064	419893	430.6	No Data
A1415_1392	SOIL	AUSTRALIAN SELECTION PTY LTD	MGA94_51	6763064	419921.5	430.7	No Data
A1415_1393	SOIL	AUSTRALIAN SELECTION PTY LTD	MGA94_51	6763066	419960	431.2	No Data
A1415_1394	SOIL	AUSTRALIAN SELECTION PTY LTD	MGA94_51	6763066	419987.6	431.7	No Data
A1415_1395	SOIL	AUSTRALIAN SELECTION PTY LTD	MGA94_51	6763061	420028.7	432.2	No Data
A1415_1396	SOIL	AUSTRALIAN SELECTION PTY LTD	MGA94_51	6763061	420066.9	432.7	No Data
A1415_1397	SOIL	AUSTRALIAN SELECTION PTY LTD	MGA94_51	6763059	420108.4	433.5	No Data
A1415_1398	SOIL	AUSTRALIAN SELECTION PTY LTD	MGA94_51	6763057	420142.4	434.5	No Data
A1415_1399	SOIL	AUSTRALIAN SELECTION PTY LTD	MGA94_51	6763058	420179.7	435.2	No Data
A1415_1400	SOIL	AUSTRALIAN SELECTION PTY LTD	MGA94_51	6763055	420220.8	435.2	No Data
A1415_1401	SOIL	AUSTRALIAN SELECTION PTY LTD	MGA94_51	6763052	420258.1	435.2	No Data
A1415_1402	SOIL	AUSTRALIAN SELECTION PTY LTD	MGA94_51	6763052	420296.7	435.4	No Data



SampleID	Sample Type	Company	Grid	Easting (m)	Northing (m)	RL (m)	Au_ppb
A1415_1403	SOIL	AUSTRALIAN SELECTION PTY LTD	MGA94_51	6763052	420329.8	435.7	No Data
A1415_1404	SOIL	AUSTRALIAN SELECTION PTY LTD	MGA94_51	6763050	420378.1	435.9	No Data
A1415_1405	SOIL	AUSTRALIAN SELECTION PTY LTD	MGA94_51	6763047	420412.5	436	No Data
A1415_1406	SOIL	AUSTRALIAN SELECTION PTY LTD	MGA94_51	6763045	420449.4	436.3	No Data
A1415_1407	SOIL	AUSTRALIAN SELECTION PTY LTD	MGA94_51	6763044	420483.3	436.7	No Data
A1415_1408	SOIL	AUSTRALIAN SELECTION PTY LTD	MGA94_51	6763043	420521.9	437.2	No Data
A1415_1409	SOIL	AUSTRALIAN SELECTION PTY LTD	MGA94_51	6763040	420557.9	437.7	No Data
A1415_1410	SOIL	AUSTRALIAN SELECTION PTY LTD	MGA94_51	6763039	420596.5	437.9	No Data
A1415_1411	SOIL	AUSTRALIAN SELECTION PTY LTD	MGA94_51	6763038	420636.3	438.3	No Data
A1415_1445	SOIL	AUSTRALIAN SELECTION PTY LTD	MGA94_51	6762785	419242	434.3	No Data
A1415_1446	SOIL	AUSTRALIAN SELECTION PTY LTD	MGA94_51	6762787	419274.6	433.6	No Data
A1415_1447	SOIL	AUSTRALIAN SELECTION PTY LTD	MGA94_51	6762785	419302.2	433.3	No Data
A1415_1448	SOIL	AUSTRALIAN SELECTION PTY LTD	MGA94_51	6762787	419337.8	432.9	No Data
A1415_1449	SOIL	AUSTRALIAN SELECTION PTY LTD	MGA94_51	6762787	419369.6	432.6	No Data
A1415_1450	SOIL	AUSTRALIAN SELECTION PTY LTD	MGA94_51	6762787	419398.4	432.3	No Data
A1415_1451	SOIL	AUSTRALIAN SELECTION PTY LTD	MGA94_51	6762788	419428.1	432	No Data
A1415_1452	SOIL	AUSTRALIAN SELECTION PTY LTD	MGA94_51	6762789	419463.3	431.7	No Data
A1415_1453	SOIL	AUSTRALIAN SELECTION PTY LTD	MGA94_51	6762790	419496.4	431.2	No Data
A1415_1454	SOIL	AUSTRALIAN SELECTION PTY LTD	MGA94_51	6762788	419525.6	430.9	No Data
A1415_1455	SOIL	AUSTRALIAN SELECTION PTY LTD	MGA94_51	6762787	419558.7	430.3	No Data
A1415_1456	SOIL	AUSTRALIAN SELECTION PTY LTD	MGA94_51	6762788	419590.1	429.7	No Data
A1415_1457	SOIL	AUSTRALIAN SELECTION PTY LTD	MGA94_51	6762790	419620.2	429.2	No Data
A1415_1458	SOIL	AUSTRALIAN SELECTION PTY LTD	MGA94_51	6762789	419657.1	429	No Data
A1415_1459	SOIL	AUSTRALIAN SELECTION PTY LTD	MGA94_51	6762791	419687.6	429.1	No Data
A1415_1460	SOIL	AUSTRALIAN SELECTION PTY LTD	MGA94_51	6762792	419719.8	429.2	No Data
A1415_1461	SOIL	AUSTRALIAN SELECTION PTY LTD	MGA94_51	6762791	419749.9	429.5	No Data
A1415_1462	SOIL	AUSTRALIAN SELECTION PTY LTD	MGA94_51	6762790	419783.9	429.8	No Data
A1415_1463	SOIL	AUSTRALIAN SELECTION PTY LTD	MGA94_51	6762793	419817.8	430.2	No Data
A1415_1464	SOIL	AUSTRALIAN SELECTION PTY LTD	MGA94_51	6762790	419849.6	430.7	No Data
A1415_1465	SOIL	AUSTRALIAN SELECTION PTY LTD	MGA94_51	6762792	419878.4	431.3	No Data
A1415_1466	SOIL	AUSTRALIAN SELECTION PTY LTD	MGA94_51	6762789	419912.8	432	No Data
A1415_1467	SOIL	AUSTRALIAN SELECTION PTY LTD	MGA94_51	6762791	419945	432.4	No Data
A1415_1468	SOIL	AUSTRALIAN SELECTION PTY LTD	MGA94_51	6762790	419975.9	432.6	No Data
A1415_1469	SOIL	AUSTRALIAN SELECTION PTY LTD	MGA94_51	6762787	420002.7	432.7	No Data
A1415_1470	SOIL	AUSTRALIAN SELECTION PTY LTD	MGA94_51	6762786	420034.5	432.9	No Data
A1415_1471	SOIL	AUSTRALIAN SELECTION PTY LTD	MGA94_51	6762784	420068.4	433	No Data
A1415_1472	SOIL	AUSTRALIAN SELECTION PTY LTD	MGA94_51	6762785	420097.2	433.2	No Data



SampleID	Sample Type	Company	Grid	Easting (m)	Northing (m)	RL (m)	Au_ppb
A1415_1473	SOIL	AUSTRALIAN SELECTION PTY LTD	MGA94_51	6762783	420134.1	433.7	No Data
A1415_1474	SOIL	AUSTRALIAN SELECTION PTY LTD	MGA94_51	6762781	420162.9	434.3	No Data
A1415_1475	SOIL	AUSTRALIAN SELECTION PTY LTD	MGA94_51	6762776	420195.2	435.4	No Data
A1415_1476	SOIL	AUSTRALIAN SELECTION PTY LTD	MGA94_51	6762777	420226.1	436.8	No Data
A1415_1477	SOIL	AUSTRALIAN SELECTION PTY LTD	MGA94_51	6762774	420256.2	438	No Data
A1415_1478	SOIL	AUSTRALIAN SELECTION PTY LTD	MGA94_51	6762774	420288.4	439.1	No Data
A1415_1479	SOIL	AUSTRALIAN SELECTION PTY LTD	MGA94_51	6762773	420319.8	439.9	No Data
A1415_1480	SOIL	AUSTRALIAN SELECTION PTY LTD	MGA94_51	6762771	420349.5	440.2	No Data
A1415_1481	SOIL	AUSTRALIAN SELECTION PTY LTD	MGA94_51	6762772	420382.6	440.1	No Data
A1415_1482	SOIL	AUSTRALIAN SELECTION PTY LTD	MGA94_51	6762768	420411.8	440	No Data
A1415_1483	SOIL	AUSTRALIAN SELECTION PTY LTD	MGA94_51	6762768	420449.1	439.8	No Data
A1415_1484	SOIL	AUSTRALIAN SELECTION PTY LTD	MGA94_51	6762766	420473.7	439.8	No Data
A1415_1485	SOIL	AUSTRALIAN SELECTION PTY LTD	MGA94_51	6762765	420507.7	440.2	No Data
A1415_1486	SOIL	AUSTRALIAN SELECTION PTY LTD	MGA94_51	6762764	420539.5	441.1	No Data
A1415_1487	SOIL	AUSTRALIAN SELECTION PTY LTD	MGA94_51	6762761	420571.3	442.1	No Data
A1415_1488	SOIL	AUSTRALIAN SELECTION PTY LTD	MGA94_51	6762761	420600.1	442.9	No Data
A1415_1489	SOIL	AUSTRALIAN SELECTION PTY LTD	MGA94_51	6762759	420632.3	443.9	No Data
A1415_1599	SOIL	AUSTRALIAN SELECTION PTY LTD	MGA94_51	6762434	419238.6	434.2	No Data
A1415_1600	SOIL	AUSTRALIAN SELECTION PTY LTD	MGA94_51	6762435	419275.5	433.9	No Data
A1415_1601	SOIL	AUSTRALIAN SELECTION PTY LTD	MGA94_51	6762435	419315.3	433.5	No Data
A1415_1602	SOIL	AUSTRALIAN SELECTION PTY LTD	MGA94_51	6762437	419349.2	433.3	No Data
A1415_1603	SOIL	AUSTRALIAN SELECTION PTY LTD	MGA94_51	6762438	419384.4	432.9	No Data
A1415_1604	SOIL	AUSTRALIAN SELECTION PTY LTD	MGA94_51	6762438	419415	432.6	No Data
A1415_1605	SOIL	AUSTRALIAN SELECTION PTY LTD	MGA94_51	6762438	419446.3	432.1	No Data
A1415_1606	SOIL	AUSTRALIAN SELECTION PTY LTD	MGA94_51	6762440	419484.5	431.2	No Data
A1415_1607	SOIL	AUSTRALIAN SELECTION PTY LTD	MGA94_51	6762441	419521	430.2	No Data
A1415_1608	SOIL	AUSTRALIAN SELECTION PTY LTD	MGA94_51	6762440	419553.6	429.4	No Data
A1415_1609	SOIL	AUSTRALIAN SELECTION PTY LTD	MGA94_51	6762443	419588.4	428.7	No Data
A1415_1610	SOIL	AUSTRALIAN SELECTION PTY LTD	MGA94_51	6762442	419623.2	428.1	No Data
A1415_1611	SOIL	AUSTRALIAN SELECTION PTY LTD	MGA94_51	6762443	419653.3	427.5	No Data
A1415_1612	SOIL	AUSTRALIAN SELECTION PTY LTD	MGA94_51	6762443	419686.3	427.2	No Data
A1415_1613	SOIL	AUSTRALIAN SELECTION PTY LTD	MGA94_51	6762443	419717.7	427.2	No Data
A1415_1614	SOIL	AUSTRALIAN SELECTION PTY LTD	MGA94_51	6762443	419747.8	427.5	No Data
A1415_1615	SOIL	AUSTRALIAN SELECTION PTY LTD	MGA94_51	6762444	419780	427.9	No Data
A1415_1616	SOIL	AUSTRALIAN SELECTION PTY LTD	MGA94_51	6762445	419820.3	428.5	No Data
A1415_1617	SOIL	AUSTRALIAN SELECTION PTY LTD	MGA94_51	6762445	419850	429	No Data
A1415_1618	SOIL	AUSTRALIAN SELECTION PTY LTD	MGA94_51	6762445	419882.2	429.6	No Data





SampleID	Sample Type	Company	Grid	Easting (m)	Northing (m)	RL (m)	Au_ppb
A1415_1619	SOIL	AUSTRALIAN SELECTION PTY LTD	MGA94_51	6762443	419913.6	430.2	No Data
A1415_1620	SOIL	AUSTRALIAN SELECTION PTY LTD	MGA94_51	6762444	419944.6	430.9	No Data
A36446_21365	SOIL	DELTA GOLD NL	MGA94_51	6764007	420324.3	440.2	2
A36446_14647	SOIL	DELTA GOLD NL	MGA94_51	6764038	420588.9	442.4	9
A36446_14648	SOIL	DELTA GOLD NL	MGA94_51	6763894	420305.6	437.7	8
A36446_14508	SOIL	DELTA GOLD NL	MGA94_51	6763412	420063.9	432	3
A36446_14677	SOIL	DELTA GOLD NL	MGA94_51	6762959	420475.2	436.8	5
A36446_19806	SOIL	DELTA GOLD NL	MGA94_51	6762787	420030	432.9	5.6
A36446_14597	SOIL	DELTA GOLD NL	MGA94_51	6762577	420043.6	432.2	8
A36446_19805	SOIL	DELTA GOLD NL	MGA94_51	6762557	419801.9	428.8	2.8
A36446_19808	SOIL	DELTA GOLD NL	MGA94_51	6762404	420041	432.5	3.2
A36446_19807	SOIL	DELTA GOLD NL	MGA94_51	6762560	420317.5	437.2	4.4
A36446_14596	SOIL	DELTA GOLD NL	MGA94_51	6762481	420596.5	443.7	5
A36446_14689	SOIL	DELTA GOLD NL	MGA94_51	6761946	419814.6	426.4	4
A36446_21339	SOIL	DELTA GOLD NL	MGA94_51	6761857	420123.3	428.7	1.9
A36446_14688	SOIL	DELTA GOLD NL	MGA94_51	6761942	420326.8	431.1	6
A36446_21347	SOIL	DELTA GOLD NL	MGA94_51	6762126	420583.8	437.7	4.9
A36446_21341	SOIL	DELTA GOLD NL	MGA94_51	6761869	420615.1	433.9	1
A36446_21340	SOIL	DELTA GOLD NL	MGA94_51	6761866	420370.1	430.7	1.4
A36446_15122	SOIL	DELTA GOLD NL	MGA94_51	6761628	420630.4	431.4	5
A36446_21338	SOIL	DELTA GOLD NL	MGA94_51	6761609	420320.5	429.7	6
A36446_15123	SOIL	DELTA GOLD NL	MGA94_51	6761602	420137.3	427.6	9
A36446_15124	SOIL	DELTA GOLD NL	MGA94_51	6761413	419584.8	424.1	4
A36446_14714	SOIL	DELTA GOLD NL	MGA94_51	6760914	419795.1	426.3	6
A36446_14713	SOIL	DELTA GOLD NL	MGA94_51	6760911	420294.2	444.2	5
A36446_14541	SOIL	DELTA GOLD NL	MGA94_51	6760471	420599.9	437.2	4
A36446_14542	SOIL	DELTA GOLD NL	MGA94_51	6760460	420079.2	425.5	3
A37832_26012	SOIL	DELTA GOLD NL	MGA94_51	6763949	420483.1	440.6	6
A37832_26011	SOIL	DELTA GOLD NL	MGA94_51	6763948	420533.2	441.3	2
A37832_26010	SOIL	DELTA GOLD NL	MGA94_51	6763949	420584.2	442.1	4
A37832_26009	SOIL	DELTA GOLD NL	MGA94_51	6763948	420634.4	442.9	1
A37832_26027	SOIL	DELTA GOLD NL	MGA94_51	6763849	420432.5	439.5	2
A37832_26026	SOIL	DELTA GOLD NL	MGA94_51	6763850	420483.1	440.2	2
A37832_26025	SOIL	DELTA GOLD NL	MGA94_51	6763850	420533.4	441	7
A37832_26024	SOIL	DELTA GOLD NL	MGA94_51	6763850	420584	441.9	5
A37832_26023	SOIL	DELTA GOLD NL	MGA94_51	6763849	420634.8	443.2	1
A36446_21465	LAG	DELTA GOLD NL	MGA94_51	6764002	420324.4	440.1	1
A36446_15648	LAG	DELTA GOLD NL	MGA94_51	6763889	420302.9	437.7	4
A36446_15647	LAG	DELTA GOLD NL	MGA94_51	6764039	420587.2	442.4	30
A36446_15508	LAG	DELTA GOLD NL	MGA94_51	6763406	420061.5	432	1
A36446_15677	LAG	DELTA GOLD NL	MGA94_51	6762961	420471.8	436.7	5
A36446_19906	LAG	DELTA GOLD NL	MGA94_51	6762789	420030.8	432.9	1



SampleID	Sample Type	Company	Grid	Easting (m)	Northing (m)	RL (m)	Au_ppb
A36446_19905	LAG	DELTA GOLD NL	MGA94_51	6762559	419803.4	428.8	2
A36446_15597	LAG	DELTA GOLD NL	MGA94_51	6762578	420042.3	432.2	2
A36446_19907	LAG	DELTA GOLD NL	MGA94_51	6762562	420313.3	437.2	2
A36446_15596	LAG	DELTA GOLD NL	MGA94_51	6762484	420591.2	443.6	1
A36446_21447	LAG	DELTA GOLD NL	MGA94_51	6762134	420591	437.7	3
A36446_19908	LAG	DELTA GOLD NL	MGA94_51	6762404	420038.7	432.4	2
A36446_15688	LAG	DELTA GOLD NL	MGA94_51	6761946	420323.9	431.1	2
A36446_21439	LAG	DELTA GOLD NL	MGA94_51	6761864	420120.6	428.7	2
A36446_21440	LAG	DELTA GOLD NL	MGA94_51	6761866	420369.4	430.7	2
A36446_21441	LAG	DELTA GOLD NL	MGA94_51	6761870	420613.7	433.9	1
A36446_15689	LAG	DELTA GOLD NL	MGA94_51	6761948	419814.2	426.4	6
A36446_16124	LAG	DELTA GOLD NL	MGA94_51	6761416	419587.9	424	2
A36446_16123	LAG	DELTA GOLD NL	MGA94_51	6761598	420134.9	427.6	5
A36446_21438	LAG	DELTA GOLD NL	MGA94_51	6761615	420318.8	429.6	7
A36446_16122	LAG	DELTA GOLD NL	MGA94_51	6761633	420632	431.5	3
A36446_15714	LAG	DELTA GOLD NL	MGA94_51	6760918	419798.3	426.4	2
A36446_15713	LAG	DELTA GOLD NL	MGA94_51	6760913	420291.7	444.1	3
A36446_15542	LAG	DELTA GOLD NL	MGA94_51	6760465	420082.9	425.6	1
547963_101_95	AUGER	SARACEN GOLD MINES PTY LTD	MGA94_51	422242.2	6764208.0	No Data	No Data
547964_101_95	AUGER	SARACEN GOLD MINES PTY LTD	MGA94_51	422339.8	6764229.6	No Data	No Data
547965_101_95	AUGER	SARACEN GOLD MINES PTY LTD	MGA94_51	422437.5	6764251.3	No Data	No Data
547966_101_95	AUGER	SARACEN GOLD MINES PTY LTD	MGA94_51	422535.2	6764273.0	No Data	No Data
547967_101_95	AUGER	SARACEN GOLD MINES PTY LTD	MGA94_51	422632.8	6764294.6	No Data	No Data
547968_101_95	AUGER	SARACEN GOLD MINES PTY LTD	MGA94_51	422730.5	6764316.3	No Data	No Data
547969_101_95	AUGER	SARACEN GOLD MINES PTY LTD	MGA94_51	422828.2	6764338.0	No Data	No Data
547970_101_95	AUGER	SARACEN GOLD MINES PTY LTD	MGA94_51	422925.8	6764359.6	No Data	No Data
547971_101_95	AUGER	SARACEN GOLD MINES PTY LTD	MGA94_51	423023.5	6764381.3	No Data	No Data
547972_101_95	AUGER	SARACEN GOLD MINES PTY LTD	MGA94_51	423121.1	6764403.0	No Data	No Data
197610	SOIL	GME RESOURCES LTD	MGA94_51	419700.9	6766101.5	No Data	0.004
197620	SOIL	GME RESOURCES LTD	MGA94_51	419700.9	6766201.5	No Data	0.019
197630	SOIL	GME RESOURCES LTD	MGA94_51	419700.9	6766301.5	No Data	0.006
197640	SOIL	GME RESOURCES LTD	MGA94_51	419700.9	6766401.5	No Data	0.005
197650	SOIL	GME RESOURCES LTD	MGA94_51	419700.9	6766501.5	No Data	0.006
197660	SOIL	GME RESOURCES LTD	MGA94_51	419700.9	6766601.5	No Data	0.005
197670	SOIL	GME RESOURCES LTD	MGA94_51	419700.9	6766701.5	No Data	0.003
197680	SOIL	GME RESOURCES LTD	MGA94_51	419700.9	6766801.5	No Data	0.003



SampleID	Sample Type	Company	Grid	Easting (m)	Northing (m)	RL (m)	Au_ppb
198610	SOIL	GME RESOURCES LTD	MGA94_51	419800.9	6766101.5	No Data	0.003
198620	SOIL	GME RESOURCES LTD	MGA94_51	419800.9	6766201.5	No Data	0.005
198630	SOIL	GME RESOURCES LTD	MGA94_51	419800.9	6766301.5	No Data	0.006
198640	SOIL	GME RESOURCES LTD	MGA94_51	419800.9	6766401.5	No Data	0.005
198650	SOIL	GME RESOURCES LTD	MGA94_51	419800.9	6766501.5	No Data	0.003
198660	SOIL	GME RESOURCES LTD	MGA94_51	419800.9	6766601.5	No Data	0.005
198670	SOIL	GME RESOURCES LTD	MGA94_51	419800.9	6766701.5	No Data	0.002
198680	SOIL	GME RESOURCES LTD	MGA94_51	419800.9	6766801.5	No Data	0.006
199610	SOIL	GME RESOURCES LTD	MGA94_51	419900.9	6766101.5	No Data	0.008
199620	SOIL	GME RESOURCES LTD	MGA94_51	419900.9	6766201.5	No Data	0.009
199630	SOIL	GME RESOURCES LTD	MGA94_51	419900.9	6766301.5	No Data	0.005
199640	SOIL	GME RESOURCES LTD	MGA94_51	419900.9	6766401.5	No Data	0.004
199650	SOIL	GME RESOURCES LTD	MGA94_51	419900.9	6766501.5	No Data	0.003
199660	SOIL	GME RESOURCES LTD	MGA94_51	419900.9	6766601.5	No Data	0.021
199670	SOIL	GME RESOURCES LTD	MGA94_51	419900.9	6766701.5	No Data	0.003
199680	SOIL	GME RESOURCES LTD	MGA94_51	419900.9	6766801.5	No Data	0.002
200610	SOIL	GME RESOURCES LTD	MGA94_51	420000.9	6766101.5	No Data	0.004
200620	SOIL	GME RESOURCES LTD	MGA94_51	420000.9	6766201.5	No Data	0.005
200630	SOIL	GME RESOURCES LTD	MGA94_51	420000.9	6766301.5	No Data	0.018
200640	SOIL	GME RESOURCES LTD	MGA94_51	420000.9	6766401.5	No Data	0.004
200650	SOIL	GME RESOURCES LTD	MGA94_51	420000.9	6766501.5	No Data	0.004
200660	SOIL	GME RESOURCES LTD	MGA94_51	420000.9	6766601.5	No Data	0.007
200670	SOIL	GME RESOURCES LTD	MGA94_51	420000.9	6766701.5	No Data	0.005
200680	SOIL	GME RESOURCES LTD	MGA94_51	420000.9	6766801.5	No Data	0.005
200690	SOIL	GME RESOURCES LTD	MGA94_51	420000.9	6766901.5	No Data	0.005
200700	SOIL	GME RESOURCES LTD	MGA94_51	420000.9	6767001.5	No Data	0.005
201610	SOIL	GME RESOURCES LTD	MGA94_51	420100.9	6766101.5	No Data	0.006
201620	SOIL	GME RESOURCES LTD	MGA94_51	420100.9	6766201.5	No Data	0.004
201630	SOIL	GME RESOURCES LTD	MGA94_51	420100.9	6766301.5	No Data	0.004
201640	SOIL	GME RESOURCES LTD	MGA94_51	420100.9	6766401.5	No Data	0.004
201650	SOIL	GME RESOURCES LTD	MGA94_51	420100.9	6766501.5	No Data	0.003
201660	SOIL	GME RESOURCES LTD	MGA94_51	420100.9	6766601.5	No Data	0.033





SampleID	Sample Type	Company	Grid	Easting (m)	Northing (m)	RL (m)	Au_ppb
201670	SOIL	GME RESOURCES LTD	MGA94_51	420100.9	6766701.5	No Data	0.002
201680	SOIL	GME RESOURCES LTD	MGA94_51	420100.9	6766801.5	No Data	0.006
201690	SOIL	GME RESOURCES LTD	MGA94_51	420100.9	6766901.5	No Data	0.005
201700	SOIL	GME RESOURCES LTD	MGA94_51	420100.9	6767001.5	No Data	0.005
201710	SOIL	GME RESOURCES LTD	MGA94_51	420100.9	6767101.5	No Data	0.009
202610	SOIL	GME RESOURCES LTD	MGA94_51	420200.9	6766101.5	No Data	0.004
202620	SOIL	GME RESOURCES LTD	MGA94_51	420200.9	6766201.5	No Data	0.004
202630	SOIL	GME RESOURCES LTD	MGA94_51	420200.9	6766301.5	No Data	0.005
202640	SOIL	GME RESOURCES LTD	MGA94_51	420200.9	6766401.5	No Data	0.004
202650	SOIL	GME RESOURCES LTD	MGA94_51	420200.9	6766501.5	No Data	0.013
202660	SOIL	GME RESOURCES LTD	MGA94_51	420200.9	6766601.5	No Data	0.005
202670	SOIL	GME RESOURCES LTD	MGA94_51	420200.9	6766701.5	No Data	0.002
202680	SOIL	GME RESOURCES LTD	MGA94_51	420200.9	6766801.5	No Data	0.003
202690	SOIL	GME RESOURCES LTD	MGA94_51	420200.9	6766901.5	No Data	0.007
202700	SOIL	GME RESOURCES LTD	MGA94_51	420200.9	6767001.5	No Data	0.011
202710	SOIL	GME RESOURCES LTD	MGA94_51	420200.9	6767101.5	No Data	0.003
203610	SOIL	GME RESOURCES LTD	MGA94_51	420300.9	6766101.5	No Data	0.005
203620	SOIL	GME RESOURCES LTD	MGA94_51	420300.9	6766201.5	No Data	0.005
203630	SOIL	GME RESOURCES LTD	MGA94_51	420300.9	6766301.5	No Data	0.004
203640	SOIL	GME RESOURCES LTD	MGA94_51	420300.9	6766401.5	No Data	0.003
203650	SOIL	GME RESOURCES LTD	MGA94_51	420300.9	6766501.5	No Data	0.003
203660	SOIL	GME RESOURCES LTD	MGA94_51	420300.9	6766601.5	No Data	0.006
203670	SOIL	GME RESOURCES LTD	MGA94_51	420300.9	6766701.5	No Data	0.004
203680	SOIL	GME RESOURCES LTD	MGA94_51	420300.9	6766801.5	No Data	0.004
203690	SOIL	GME RESOURCES LTD	MGA94_51	420300.9	6766901.5	No Data	0.009
203700	SOIL	GME RESOURCES LTD	MGA94_51	420300.9	6767001.5	No Data	0.008
204610	SOIL	GME RESOURCES LTD	MGA94_51	420400.9	6766101.5	No Data	0.003
204620	SOIL	GME RESOURCES LTD	MGA94_51	420400.9	6766201.5	No Data	0.001
204630	SOIL	GME RESOURCES LTD	MGA94_51	420400.9	6766301.5	No Data	0.003
204640	SOIL	GME RESOURCES LTD	MGA94_51	420400.9	6766401.5	No Data	0.005
204650	SOIL	GME RESOURCES LTD	MGA94_51	420400.9	6766501.5	No Data	0.004
204660	SOIL	GME RESOURCES LTD	MGA94_51	420400.9	6766601.5	No Data	0.003



SampleID	Sample Type	Company	Grid	Easting (m)	Northing (m)	RL (m)	Au_ppb
204670	SOIL	GME RESOURCES LTD	MGA94_51	420400.9	6766701.5	No Data	0.003
204680	SOIL	GME RESOURCES LTD	MGA94_51	420400.9	6766801.5	No Data	0.009
204690	SOIL	GME RESOURCES LTD	MGA94_51	420400.9	6766901.5	No Data	0.009
205610	SOIL	GME RESOURCES LTD	MGA94_51	420500.9	6766101.5	No Data	0.004
205620	SOIL	GME RESOURCES LTD	MGA94_51	420500.9	6766201.5	No Data	0.005
205630	SOIL	GME RESOURCES LTD	MGA94_51	420500.9	6766301.5	No Data	0.003
205640	SOIL	GME RESOURCES LTD	MGA94_51	420500.9	6766401.5	No Data	0.01
205650	SOIL	GME RESOURCES LTD	MGA94_51	420500.9	6766501.5	No Data	0.006
205660	SOIL	GME RESOURCES LTD	MGA94_51	420500.9	6766601.5	No Data	0.008
205670	SOIL	GME RESOURCES LTD	MGA94_51	420500.9	6766701.5	No Data	0.004
205680	SOIL	GME RESOURCES LTD	MGA94_51	420500.9	6766801.5	No Data	0.005
S114943	SOIL	HERON RESOURCES LTD	MGA94_51	422100.9	6764101.5	No Data	0.008
S114944	SOIL	HERON RESOURCES LTD	MGA94_51	422000.9	6764101.5	No Data	0.001
S114945	SOIL	HERON RESOURCES LTD	MGA94_51	421900.9	6764101.5	No Data	0.007
S114946	SOIL	HERON RESOURCES LTD	MGA94_51	421800.9	6764101.5	No Data	0.004
S114947	SOIL	HERON RESOURCES LTD	MGA94_51	421700.9	6764101.5	No Data	0.006
S114948	SOIL	HERON RESOURCES LTD	MGA94_51	421600.9	6764101.5	No Data	0.014
S114949	SOIL	HERON RESOURCES LTD	MGA94_51	421500.9	6764101.5	No Data	0.005
S114950	SOIL	HERON RESOURCES LTD	MGA94_51	421400.9	6764101.5	No Data	0.041
S114951	SOIL	HERON RESOURCES LTD	MGA94_51	421300.9	6764101.5	No Data	0.005
S114952	SOIL	HERON RESOURCES LTD	MGA94_51	421200.9	6764101.5	No Data	0.001
S114953	SOIL	HERON RESOURCES LTD	MGA94_51	421100.9	6764101.5	No Data	0.007
S114954	SOIL	HERON RESOURCES LTD	MGA94_51	421000.9	6764101.5	No Data	0.004
S114955	SOIL	HERON RESOURCES LTD	MGA94_51	420900.9	6764101.5	No Data	0.003
S114956	SOIL	HERON RESOURCES LTD	MGA94_51	420800.9	6764101.5	No Data	0.006

**Table 3 - Drillhole collar details**

Hole ID	Coordinates (MGA Zone 51)			Hole Details				Company
	Easting (m)	Northing (m)	RL (m)	Hole Type	Total Depth (m)	Azi (deg)	Dip (deg)	
EUG001	420025	6766650	450	RC	40.000	230	-60	NiWest/GME
EUG002	420034	6766656	447	RC	50.000	230	-60	NiWest/GME
EUG003	419999	6766663	449	RC	34.000	215	-60	NiWest/GME



Hole ID	Coordinates (MGA Zone 51)			Hole Details				Company
	Easting (m)	Northing (m)	RL (m)	Hole Type	Total Depth (m)	Azi (deg)	Dip (deg)	
EUG004	420003	6766670	448	RC	40.000	215	-60	NiWest/GME
EUG005	419978	6766674	447	RC	25.000	215	-60	NiWest/GME
EUG006	419982	6766684	450	RC	34.000	215	-60	NiWest/GME
EBR000092	420266	6764386	435	RAB	9.000	0	-90	Mining Project Investors
EBR000093	420467	6764389	436	RAB	15.000	0	-90	Mining Project Investors
EBR000094	420765	6764391	438	RAB	5.000	0	-90	Mining Project Investors
EBR000095	420868	6764393	439	RAB	5.000	0	-90	Mining Project Investors
EBR000096	420967	6764393	441	RAB	3.000	0	-90	Mining Project Investors
EBR000097	421067	6764393	441	RAB	9.000	0	-90	Mining Project Investors
EBR000098	421037	6764394	440	RAB	6.000	0	-90	Mining Project Investors
EBR000099	422871	6764409	448	RAB	48.000	0	-90	Mining Project Investors
EBR000100	422969	6764409	447	RAB	15.000	0	-90	Mining Project Investors
rceu000001	419564	6765192	444	RC	11.000	0	-90	Aberfoyle
rceu000002	419672	6765195	444	RC	5.000	0	-90	Aberfoyle
rceu000355	420149	6766390	442	RC	17.000	0	-90	Aberfoyle
rceu000356	420247	6765996	439	RC	29.000	0	-90	Aberfoyle
rceu000357	420250	6765599	440	RC	17.000	0	-90	Aberfoyle
rceu000358	420315	6765201	442	RC	17.000	0	-90	Aberfoyle

**Table 4 - Downhole Assay Results**

Hole ID	SampleID	Depth From (m)	Depth To (m)	Sample Type	Au_ppm	Company
EUG001	NW27721	19.000	20.000	CHIPS	0.006	NiWest
EUG001	NW27722	20.000	21.000	CHIPS	0.011	NiWest
EUG001	NW27723	21.000	22.000	CHIPS	0.029	NiWest
EUG001	NW27724	22.000	23.000	CHIPS	0.019	NiWest
EUG001	NW27726	23.000	24.000	CHIPS	0.026	NiWest
EUG001	NW27727	24.000	25.000	CHIPS	0.012	NiWest
EUG001	NW27728	25.000	26.000	CHIPS	0.010	NiWest
EUG001	NW27729	26.000	27.000	CHIPS	0.004	NiWest
EUG001	NW27730	27.000	28.000	CHIPS	0.003	NiWest
EUG001	NW27731	28.000	29.000	CHIPS	0.015	NiWest
EUG001	NW27732	29.000	30.000	CHIPS	0.008	NiWest
EUG001	NW27733	30.000	31.000	CHIPS	0.004	NiWest
EUG001	NW27734	31.000	32.000	CHIPS	0.002	NiWest
EUG001	NW27735	32.000	33.000	CHIPS	<0.001	NiWest





Hole ID	SampleID	Depth From (m)	Depth To (m)	Sample Type	Au_ppm	Company
EUG001	NW27736	33.000	34.000	CHIPS	<0.001	NiWest
EUG002	NW27780	35.000	36.000	CHIPS	0.004	NiWest
EUG002	NW27781	36.000	37.000	CHIPS	0.007	NiWest
EUG002	NW27782	37.000	38.000	CHIPS	0.005	NiWest
EUG002	NW27783	38.000	39.000	CHIPS	0.003	NiWest
EUG002	NW27784	39.000	40.000	CHIPS	0.003	NiWest
EUG002	NW27785	40.000	41.000	CHIPS	0.004	NiWest
EUG002	NW27786	41.000	42.000	CHIPS	0.003	NiWest
EUG002	NW27787	42.000	43.000	CHIPS	0.004	NiWest
EUG002	NW27788	43.000	44.000	CHIPS	0.005	NiWest
EUG003	NW28019	23.000	24.000	CHIPS	0.005	NiWest
EUG003	NW28020	24.000	25.000	CHIPS	0.004	NiWest
EUG003	NW28021	25.000	26.000	CHIPS	0.007	NiWest
EUG003	NW28022	26.000	27.000	CHIPS	0.004	NiWest
EUG003	NW28023	27.000	28.000	CHIPS	0.003	NiWest
EUG003	NW28024	28.000	29.000	CHIPS	0.004	NiWest
EUG003	NW28026	29.000	30.000	CHIPS	0.002	NiWest
EUG003	NW28027	30.000	31.000	CHIPS	0.003	NiWest
EUG003	NW28028	31.000	32.000	CHIPS	0.002	NiWest
EUG003	NW28029	32.000	33.000	CHIPS	0.003	NiWest
EUG003	NW28030	33.000	34.000	CHIPS	0.003	NiWest
EUG004	NW27802	16.000	17.000	CHIPS	3.020	NiWest
EUG004	NW27803	17.000	18.000	CHIPS	0.020	NiWest
EUG004	NW27804	18.000	19.000	CHIPS	0.010	NiWest
EUG004	NW27805	19.000	20.000	CHIPS	0.008	NiWest
EUG004	NW27821	35.000	36.000	CHIPS	0.017	NiWest
EUG004	NW27822	36.000	37.000	CHIPS	0.003	NiWest
EUG004	NW27823	37.000	38.000	CHIPS	0.006	NiWest
EUG004	NW27824	38.000	39.000	CHIPS	0.001	NiWest
EUG004	NW27826	39.000	40.000	CHIPS	0.002	NiWest
EUG005	NW28042	11.000	12.000	CHIPS	0.014	NiWest
EUG005	NW28043	12.000	13.000	CHIPS	0.027	NiWest
EUG005	NW28047	16.000	17.000	CHIPS	0.005	NiWest
EUG005	NW28048	17.000	18.000	CHIPS	0.006	NiWest
EUG005	NW28049	18.000	19.000	CHIPS	0.003	NiWest
EUG005	NW28051	19.000	20.000	CHIPS	0.010	NiWest
EUG005	NW28052	20.000	21.000	CHIPS	0.002	NiWest
EUG005	NW28053	21.000	22.000	CHIPS	0.002	NiWest
EUG005	NW28054	22.000	23.000	CHIPS	0.005	NiWest
EUG005	NW28055	23.000	24.000	CHIPS	0.001	NiWest
EUG005	NW28056	24.000	25.000	CHIPS	0.025	NiWest
EUG006	NW28071	14.000	15.000	CHIPS	0.396	NiWest



Hole ID	SampleID	Depth From (m)	Depth To (m)	Sample Type	Au_ppm	Company
EUG006	NW28072	15.000	16.000	CHIPS	2.540	NiWest
EUG006	NW28073	16.000	17.000	CHIPS	0.031	NiWest
EUG006	NW28074	17.000	18.000	CHIPS	0.476	NiWest
EUG006	NW28076	18.000	19.000	CHIPS	0.045	NiWest
EUG006	NW28080	22.000	23.000	CHIPS	<0.001	NiWest
EUG006	NW28081	23.000	24.000	CHIPS	0.020	NiWest
EUG006	NW28082	24.000	25.000	CHIPS	0.013	NiWest
EUG006	NW28083	25.000	26.000	CHIPS	0.027	NiWest
EUG006	NW28084	26.000	27.000	CHIPS	0.006	NiWest
EUG006	NW28085	27.000	28.000	CHIPS	0.004	NiWest
EUG006	NW28086	28.000	29.000	CHIPS	0.006	NiWest

**Table 5 - Significant drillhole intersections**

Hole ID	Coordinates (MGA Zone 51)			Hole Details				Intercept Details				
	Easting (m)	Northing (m)	RL (m)	Hole Type	Total Depth (m)	Azi (deg)	Dip (deg)	Depth From (m)	Depth To (m)	Intercept Width (m)	Grade (g/t)	Grade summary/Comments
EUG004	420003	6766670	448	RC	40.000	215	-60	16	17	1	3.02	1m @ 3.02g/t Au from 16m
EUG006	419982	6766684	450	RC	34.000	215	-60	14	16	2	1.47	2m @ 1.47g/t Au from 14m
EUG006	419982	6766684	450	RC	34.000	215	-60	15	16	1	2.54	1m @ 2.54g/t Au from 15m
EUG006	419982	6766684	450	RC	34.000	215	-60	17	18	1	0.48	1m @ 0.48g/t Au from 17m

**Appendix A: Summary of historical exploration activities**

Period	Owner / Operator	Activities	References
1966-1975	Australian Selection Pty Ltd	Regional mapping, localised detailed mapping, soil sampling 250m x 30m sample spacing. Analysed for Ni-Cu-Zn. (Table 1-5, Appendix B)	A1409-1412 A1414-1415 A7643 A7646 Table 1-5 Appendix B
1973-1974	Australasian Minerals	Regional reconnaissance mapping. Outcrop identified throughout E39/2188 area.	A5111, A5112
1986-1988	Centenary International Mining (CIM)	Field reconnaissance, mapping of gold workings, rockchip sampling of mullock and pits, regional auger surface Geochem on 400m x 100m sample spacing – analysed for Au & As in ppm. RC drilling undertaken on excised area of E39/2188.	A22531 A22365 A26036 Table 1-5 Appendix B
1991-1992	Delta Gold NL	Lag sampling undertaken on E39/2188 as part of a wider program of sampling in the region. Au analysed in ppb. (Table 1-5)	A36446 A37832 Appendix B
1995	Mining Project Investors	RAB drilling (EBR0092-98) targeting ultramafic lithologies for nickel mineralisation. Analysed for Au. No anomalous Au.	A43519 Appendix B



Period	Owner / Operator	Activities	References
1996-1998	Aberfoyle	RC drilling (RCEU001-2, RCEU355-358) testing shallow laterite nickel mineralisation. Analysed for Au. Assays unavailable. No anomalous Ni,Co or Au.	A47464 A54234 Appendix B
2007-2020	NiWest / GME Resources	RC drilling targeting historical workings by Eucalyptus Bore. 6 holes (EUG001-6). Laterite Ni & Co primary targets with Au. Best RC drill result 1m @ 3.02g/t Au from 16m in EUG004. Partial coverage by surface sampling at 100m x 100m where present.	A75237 Table 3,4,5 Appendix B
2008	Heron Resources	Heron Resources (2008), 14 soil samples on tenure area as part of a wider survey area on their former ground. No significant Au anomalism.	A85596 Table 2 Appendix B
2020-2025	Kalgoorlie Gold Mining	New tenement E39/2188 granted to Yerilla Nickel Pty Ltd, a wholly owned subsidiary of Ardea Resources at the time and subsequently demerged into Kalgoorlie Gold Mining (KalGold). KalGold has completed sporadic surface sampling and assaying of old auger spoils. Best results include near-surface quartz veining including 39.60 g/t Au (KAL012563) and 6.44 g/t Au (KAL012567) in rock chips within shallow excavations at the West Nest Prospect. Data reviews have also been completed by KalGold.	A148904 A143139 A135103 A130938 Table 1 Appendix B refer KAL.ASX announcement High-grade gold in surface rock chips at Zelica Project 22 June 2023

**Appendix B - JORC Table 1**
**Section 1 Sampling Techniques and Data**

Criteria	JORC Code explanation	Commentary
Sampling techniques	<ul style="list-style-type: none"> <li><i>Nature and quality of sampling (eg cut channels, random chips, or specific specialised industry standard measurement tools appropriate to the minerals under investigation, such as down hole gamma sondes, or handheld XRF instruments, etc). These examples should not be taken as limiting the broad meaning of sampling.</i></li> <li><i>Include reference to measures taken to ensure sample representivity and the appropriate calibration of any measurement tools or systems used.</i></li> <li><i>Aspects of the determination of mineralisation that are Material to the Public Report.</i></li> <li><i>In cases where ‘industry standard’ work has been done this would be relatively simple (eg ‘reverse circulation drilling was used to obtain 1 m samples from which 3 kg was pulverised to produce a 30 g charge for fire assay’). In other cases more explanation may be required, such as where there is coarse gold that has inherent sampling problems. Unusual commodities or mineralisation types (eg submarine nodules) may warrant disclosure of detailed information.</i></li> </ul>	<p>Historical exploration for gold and base metals has been completed over the Project tenement by multiple between 1966 and 2024. Exploration activities include soil and rockchip sampling, geological mapping, Rotary Air Blast (RAB) and Reverse Circulation (RC).</p> <p>The drilling database for the Zelica South Project contains a total of 21 drillholes. Of this, 12 are RC holes and 9 are RAB holes.</p> <p><b>NiWest Ltd/GME (2007-2020)</b></p> <ul style="list-style-type: none"> <li>6 RC holes</li> <li>The drilling completed by NiWest Ltd / GME included RC drilling. A conventional down hole hammer configuration with a nominal 4<sup>7/8</sup>” diameter bit and four and a half inch RC rods were used.</li> <li>Samples were collected into labelled plastic and pre-numbered calico bags below the cyclone/splitter at one-meter intervals. Where samples were very moist or wet, hand grabbing down the sample plastic bag was necessary. A duplicate sample was taken every twenty-five samples the interval based upon sample numbers (1.e. last digits 00, 25,50, and 75). The duplicate sample number and interval was annotated to the written log.</li> </ul> <p><b>Aberfoyle (1996-1998)</b></p> <ul style="list-style-type: none"> <li>6 RC holes</li> <li>Samples were collected at 1m intervals and stored in 10kg plastic bags and in lkg calico bags. Composite samples were</li> </ul>

Criteria	JORC Code explanation	Commentary
		<p>collected every 4m and analysed for Cu, Co, Mg and Ni by ICP and Au by fire assay.</p> <p><b>Mining Project Investors (1995)</b></p> <ul style="list-style-type: none"> <li>• 9 RAB holes</li> <li>• Samples were collected at 5m intervals and submitted to Analabs for assay for Ni, Cu, Cr, Co, Mn and Zn. No further information is available regarding drilling and / or sampling techniques.</li> </ul> <p>Surface Sampling detailed below. Historic surface sampling referenced in the table includes the below:</p> <p><b>Saracen Gold Mines (2003-2006)</b></p> <ul style="list-style-type: none"> <li>• 10 digitised auger samples are present on E39/2188 described in a partial surrender report by Saracen Minerals. Original provenance of this data cannot be established and no assays exist with the data.</li> </ul> <p><b>Australian Selection Pty Ltd (1966-1975)</b></p> <ul style="list-style-type: none"> <li>• 700 samples (soil) on tenure.</li> </ul> <p><b>CIM (1986-1988)</b></p> <ul style="list-style-type: none"> <li>• 107 auger samples</li> <li>• Sampling and assay procedures are undefined.</li> </ul> <p><b>Delta Gold NL (1991-1992)</b></p> <ul style="list-style-type: none"> <li>• 58 samples (lag) on tenure.</li> <li>• Initially bulk-soil and lag samples were collected from each of 260 localities on a 0.5km x 0.5km offset grid-pattern.</li> <li>• Surface residual material is collected using a dustpan and brush, then sieved to +2mm, -6mm. Approximately 0.5kg of</li> </ul>



Criteria	JORC Code explanation	Commentary
		<p>sieved lag is collected. Samples are sent to Genalysis Laboratories.</p> <p><b>GME Resources Ltd (2007-2020)</b></p> <ul style="list-style-type: none"> <li>83 soil samples on tenure.</li> <li>Soil sampling was undertaken on a one hundred by one hundred metre grid sampling the -80 mesh (180 <math>\mu</math> m) material 10 centimetres below the surface.</li> </ul> <p><b>Heron Resources (2008)</b></p> <ul style="list-style-type: none"> <li>14 soil samples on tenure.</li> <li>The soil samples were taken from 25 to 200 mm depth after removing the top 20 mm. One-kilogram (approx.) samples of minus 1/32" sieved soils were taken to provide adequate sample for sieving to minus 80 mesh (180 <math>\mu</math> m) by the laboratory. Control samples were inserted at a rate of one in every twenty samples. Three control types were used on a rotating basis; duplicate, pulp standard and blank. Samples were sent to Amdel in Perth to be screened using a 180 <math>\mu</math> m sieve prior to being sent to UltraTrace laboratories in Perth for analysis. A standard suite of elements were analysed by various techniques as outline below:</li> <li>Mixed acid digest method (ICP302) for 15 elements, namely, Ag, As, Ba, Bi, Cd, Ce, Mo, Nb, Sb, Sn, Ta, Th, U, W and Y. The samples were dissolved with a mixture of nitric, perchloric, hydrochloric, and hydrofluoric acids. The resultant solution is analysed employing an Agilent 7500-a ICP Mass Spectrometer.</li> <li>Mixed acid digest method (ICP102) for 16 elements, namely, Ca, Co, Cr, Cu, Fe, K, Mg, Mn, Na, Ni, P, Pb, Sr, Ti, V and Zn.</li> </ul>

Criteria	JORC Code explanation	Commentary
		<p>The samples were dissolved with a mixture of nitric, perchloric, hydrochloric, and hydrofluoric acids. The resultant solution is analysed employing a ICP-OES Spectrometer.</p> <ul style="list-style-type: none"> <li>The samples are also analysed for gold and platinoids by the following method (FA002). Ultra Trace uses a furnace multi-loading system utilising 30 pots per fire. The firing and cupellation of the samples follows the classical, lead collection, fire assay process, using a nominal 40 g charge, with the gold, platinum and palladium being collected. The noble metal prills are parted with nitric acid and the gold, platinum and palladium are dissolved in aqua regia and diluted for ICP analysis.</li> </ul> <p><b>Kalgoorlie Gold Mining (2020-2025)</b></p> <ul style="list-style-type: none"> <li>106 surface samples on tenure. (rockchip, drillchip spoil, auger spoil)</li> </ul>
Drilling techniques	<ul style="list-style-type: none"> <li>Drill type (eg core, reverse circulation, open-hole hammer, rotary air blast, auger, Bangka, sonic, etc) and details (eg core diameter, triple or standard tube, depth of diamond tails, face-sampling bit or other type, whether core is oriented and if so, by what method, etc).</li> </ul>	<p><b>NiWest Ltd / GME</b></p> <ul style="list-style-type: none"> <li>The drilling completed by NiWest Ltd / GME included RC drilling. A conventional down hole hammer configuration with a nominal 4<sup>7/8</sup>" diameter bit and four and a half inch RC rods were used.</li> <li>No downhole surveys were completed. The degree of deviation is expected to be minimal due to the max depth of 50m.</li> </ul> <p><b>Aberfoyle</b></p>

Criteria	JORC Code explanation	Commentary
		<ul style="list-style-type: none"> <li>The drilling completed by Aberfoyle included reverse circulation and rotary air blast drilling. The bit size &amp; type, rig type is unknown. All holes were drilled, sampled, logged and assayed in accordance with industry standards at the time of drilling.</li> <li>Holes were drilled vertically. No downhole surveys were completed. The degree of deviation is expected to be minimal due to the max depth of 48m</li> </ul>
Drill sample recovery	<ul style="list-style-type: none"> <li>Method of recording and assessing core and chip sample recoveries and results assessed.</li> <li>Measures taken to maximise sample recovery and ensure representative nature of the samples.</li> <li>Whether a relationship exists between sample recovery and grade and whether sample bias may have occurred due to preferential loss/gain of fine/coarse material.</li> </ul>	<b>NiWest Ltd / GME</b> <ul style="list-style-type: none"> <li>Material was passed through a cyclone prior to sample collection. The cyclone was cleaned after each hole or if a build-up of sample material was observed.</li> </ul> <b>Aberfoyle</b> <ul style="list-style-type: none"> <li>Drill sample recovery was completed in an industry standard fashion acceptable at the time of completion.</li> </ul>
Logging	<ul style="list-style-type: none"> <li>Whether core and chip samples have been geologically and geotechnically logged to a level of detail to support appropriate Mineral Resource estimation, mining studies and metallurgical studies.</li> <li>Whether logging is qualitative or quantitative in nature. Core (or costean, channel, etc) photography.</li> <li>The total length and percentage of the relevant intersections logged.</li> </ul>	<b>NiWest Ltd / GME</b> <ul style="list-style-type: none"> <li>Geological details were recorded onto paper logging sheets in the field whilst drilling was in progress. Each meter was described in terms of dominant and subordinate lithological type, colour and presence of magnesite, asbestos, smectite and silica. Standard Anaconda rock codes were utilised in the descriptions.</li> <li>All material was logged on site from small temporary sieved mounds prepared at site during drilling. Wet sieving was undertaken where required to assist the geological identification.</li> </ul>

Criteria	JORC Code explanation	Commentary
		<b>Aberfoyle</b> <ul style="list-style-type: none"> <li>Geological details were recorded onto paper logging sheets to industry standards at the time of completion.</li> </ul>
Sub-sampling techniques and sample preparation	<ul style="list-style-type: none"> <li><i>If core, whether cut or sawn and whether quarter, half or all core taken.</i></li> <li><i>If non-core, whether riffled, tube sampled, rotary split, etc and whether sampled wet or dry.</i></li> <li><i>For all sample types, the nature, quality and appropriateness of the sample preparation technique.</i></li> <li><i>Quality control procedures adopted for all sub-sampling stages to maximise representivity of samples.</i></li> <li><i>Measures taken to ensure that the sampling is representative of the in situ material collected, including for instance results for field duplicate/second-half sampling.</i></li> <li><i>Whether sample sizes are appropriate to the grain size of the material being sampled.</i></li> </ul>	<b>NiWest Ltd / GME</b> <ul style="list-style-type: none"> <li>Samples were collected into labelled plastic and pre-numbered calico bags below the cyclone/splitter at 1m intervals. Where samples were very moist or wet, hand-grabbing down the sample plastic bag was necessary. A duplicate sample was taken every 25 samples the interval based upon sample numbers. The duplicate sample number and interval annotated to the written log. There was “good” sample recovery within most sample intervals. All sample information was recorded at the time of drilling within the handwritten geological drill logs. Every 1m sample interval and duplicates were submitted to Ultra Trace Laboratory, Perth for analysis using the “Anaconda Suit” (Ni, Co, Mg, Fe, Mn, Zn, Cu, Al, Cr, As, Si, Ca &amp; Cl)</li> </ul> <b>Aberfoyle</b> <ul style="list-style-type: none"> <li>Samples were collected at 1m intervals and stored in 10kg plastic bags and in 1kg calico bags. Composite samples were collected every 4m and analysed for Cu, Co, Mg and Ni by ICP and Au by fire assay.</li> <li>Every 1m sample interval and QC standards &amp; duplicates were submitted to Australian Laboratory Services P/L (ALS) for analysis of Cu,Co,Mg,Ni +/- Au with detection limits of</li> </ul>



Criteria	JORC Code explanation	Commentary
		<p>5ppm, 5ppm, 0.01%, 5ppm and 0.001 ppm respectively. Triple acid ICP and fire assay were utilised. The technique is considered partial. 4m composites were used for the majority of sampling, 1m interval sample submission was completed at the geologists' discretion.</p> <ul style="list-style-type: none"> <li>No water was intersected during drilling.</li> </ul> <p>Sampling techniques and procedures are not fully known for all surface sampling. Where available, details are provided below. All sampling was completed in industry standard fashion for the time period.</p> <p><b>Australian Selection Pty Ltd (1966-1975)</b></p> <ul style="list-style-type: none"> <li>700 soil samples on tenure.</li> <li>The soil cover was sampled along grid lines. Samples were sieved in the field and the -80 mesh fraction was analysed in the company's laboratory in Marrickville, N.S.W. Samples were digested with perchloric acid and the solution analysed for Ni, Cu and Zn by means of Atomic Absorption Spectrophotometry.</li> </ul> <p><b>CIM (1986-1988)</b></p> <ul style="list-style-type: none"> <li>107 auger samples on tenure.</li> <li>Sampling and assay procedures are undefined.</li> </ul> <p><b>Delta Gold NL (1991-1992)</b></p> <ul style="list-style-type: none"> <li>58 samples (lag) on tenure.</li> <li>Initially bulk-soil and lag samples were collected from each of 260 localities on a 0.5km x 0.5km offset grid-pattern.</li> <li>Surface residual material is collected using a dustpan and brush, then sieved to +2mm, -6mm. Approximately 0.5kg of</li> </ul>

Criteria	JORC Code explanation	Commentary
		<p>sieved lag is collected. Samples are sent to Genalysis Laboratories.</p> <p><b>GME Resources Ltd (2007-2020)</b></p> <ul style="list-style-type: none"> <li>83 soil samples on tenure.</li> <li>Soil sampling was undertaken on a one hundred by one hundred metre grid sampling the -80 mesh (180 <math>\mu</math> m) material 10 centimetres below the surface.</li> </ul> <p><b>Heron Resources (2008)</b></p> <ul style="list-style-type: none"> <li>14 soil samples on tenure.</li> <li>The soil samples were taken from 25 to 200 mm depth after removing the top 20 mm. One-kilogram (approx.) samples of minus 1/32" sieved soils were taken to provide adequate sample for sieving to minus 80 mesh (180 <math>\mu</math> m) by the laboratory. Control samples were inserted at a rate of one in every twenty samples. Three control types were used on a rotating basis; duplicate, pulp standard and blank. Samples were sent to Amdel in Perth to be screened using a 180 <math>\mu</math> m sieve prior to being sent to UltraTrace laboratories in Perth for analysis. A standard suite of elements were analysed by various techniques as outline below:</li> <li>Mixed acid digest method (ICP302) for 15 elements, namely, Ag, As, Ba, Bi, Cd, Ce, Mo, Nb, Sb, Sn, Ta, Th, U, W and Y. The samples were dissolved with a mixture of nitric, perchloric, hydrochloric, and hydrofluoric acids. The resultant solution is analysed employing an Agilent 7500-a ICP Mass Spectrometer.</li> <li>The samples are also analysed for gold and platinumoids by the following method (FA002). Ultra Trace uses a furnace multi-</li> </ul>

Criteria	JORC Code explanation	Commentary
		<p>loading system utilising 30 pots per fire. The firing and cupellation of the samples follows the classical, lead collection, fire assay process, using a nominal 40 g charge, with the gold, platinum and palladium being collected. The noble metal prills are parted with nitric acid and the gold, platinum and palladium are dissolved in aqua regia and diluted for ICP analysis.</p> <p><b>Kalgoorlie Gold Mining (2021-2025)</b></p> <ul style="list-style-type: none"> <li>106 surface samples on tenure. (rockchip, drillchip spoil, auger spoil)</li> </ul>
Quality of assay data and laboratory tests	<ul style="list-style-type: none"> <li><i>The nature, quality and appropriateness of the assaying and laboratory procedures used and whether the technique is considered partial or total.</i></li> <li><i>For geophysical tools, spectrometers, handheld XRF instruments, etc, the parameters used in determining the analysis including instrument make and model, reading times, calibrations factors applied and their derivation, etc.</i></li> <li><i>Nature of quality control procedures adopted (eg standards, blanks, duplicates, external laboratory checks) and whether acceptable levels of accuracy (ie lack of bias) and precision have been established.</i></li> </ul>	<p><b>NiWest Ltd / GME</b></p> <ul style="list-style-type: none"> <li>Every 1m sample interval and duplicates were submitted to Ultra Trace Laboratory, Perth for analysis using the “Anaconda Suit” (Ni, Co, Mg, Fe, Mn, Zn, Cu, Al, Cr, As, Si, Ca &amp; Cl). Analysis technique used is XRF Fusion and/or ICP-AES. The technique is considered partial.</li> <li>QC samples consisted of field duplicates.</li> <li>It is unknown if lab QC samples were utilised.</li> </ul> <p><b>Aberfoyle</b></p> <ul style="list-style-type: none"> <li>Every 1m sample interval and QC standards &amp; duplicates were submitted to Australian Laboratory Services P/L (ALS) for analysis of Cu,Co,Mg,Ni +/- Au with detection limits of 5ppm, 5ppm, 0.01%, 5ppm and 0.001 ppm respectively. Triple acid ICP and fire assay were utilised. The technique is considered partial. 4m composites were used for the</li> </ul>

majority of sampling, 1m interval sample submission was completed at the geologists' discretion.

**Australian Selection Pty Ltd**

- The soil cover was sampled along grid lines. Samples were sieved in the field and the -80 mesh fraction was analysed in the company's laboratory in Marrickville, N.S.W. Samples were digested with perchloric acid and the solution analysed for Ni, Cu and Zn by means of Atomic Absorption Spectrophotometry.

**CIM (1986-1988)**

- 107 auger samples
- Sampling and assay procedures are undefined.

**Delta Gold NL (1991-1992)**

- 58 samples (lag) on tenure.
- Initially bulk-soil and lag samples were collected from each of 260 localities on a 0.5km x 0.5km offset grid-pattern.
- Surface residual material is collected using a dustpan and brush, then sieved to +2mm, -6mm. Approximately 0.5kg of sieved lag is collected. Samples are sent to Genalysis Laboratories.

**GME Resources Ltd**

- 83 soil samples on tenure.
- Soil sampling was undertaken on a one hundred by one hundred metre grid sampling the -80 mesh (180  $\mu$  m) material 10 centimetres below the surface.



**Heron Resources (2008)**

- 14 soil samples on tenure.
- The soil samples were taken from 25 to 200 mm depth after removing the top 20 mm. One-kilogram (approx.) samples of minus 1/32" sieved soils were taken to provide adequate sample for sieving to minus 80 mesh (180  $\mu$  m) by the laboratory. Control samples were inserted at a rate of one in every twenty samples. Three control types were used on a rotating basis; duplicate, pulp standard and blank. Samples were sent to Amdel in Perth to be screened using a 180  $\mu$  m sieve prior to being sent to UltraTrace laboratories in Perth for analysis. A standard suite of elements were analysed by various techniques as outline below:
- Mixed acid digest method (ICP302) for 15 elements, namely, Ag, As, Ba, Bi, Cd, Ce, Mo, Nb, Sb, Sn, Ta, Th, U, W and Y. The samples were dissolved with a mixture of nitric, perchloric, hydrochloric, and hydrofluoric acids. The resultant solution is analysed employing an Agilent 7500-a ICP Mass Spectrometer.
- The samples are also analysed for gold and platinumoids by the following method (FA002). Ultra Trace uses a furnace multi-loading system utilising 30 pots per fire. The firing and cupellation of the samples follows the classical, lead collection, fire assay process, using a nominal 40 g charge, with the gold, platinum and palladium being collected. The noble metal prills are parted with nitric acid and the gold, platinum and palladium are dissolved in aqua regia and diluted for ICP analysis.

		<p><b>Kalgoorlie Gold Mining (2021-2025)</b></p> <ul style="list-style-type: none"> <li>106 surface samples on tenure. (rockchip, drillchip spoil, auger spoil)</li> </ul> <p><b>Kalgoorlie Gold Mining</b></p> <ul style="list-style-type: none"> <li>Surface sampling was submitted to Bureau Veritas for Au analysis by Fire Assay, with additional element analysis by mixed acid digest with either ICP-MS or ICP-AES finish. Industry standard QC procedures have been followed.</li> </ul>
<p>Verification of sampling and assaying</p>	<ul style="list-style-type: none"> <li><i>The verification of significant intersections by either independent or alternative company personnel.</i></li> <li><i>The use of twinned holes.</i></li> <li><i>Documentation of primary data, data entry procedures, data verification, data storage (physical and electronic) protocols.</i></li> <li><i>Discuss any adjustment to assay data.</i></li> </ul>	<p><b>NiWest Ltd / GME</b></p> <ul style="list-style-type: none"> <li>NiWest Ltd / GME completed their program in 2006. Data was captured on paper logs and later digitised.</li> <li>No twinned holes were drilled during the program.</li> <li>No adjustments were made to any of the assay data.</li> <li>Visual checks of data were completed.</li> </ul> <p><b>Aberfoyle</b></p> <ul style="list-style-type: none"> <li>Aberfoyle completed their programs from 1996 through to 1998. Data was captured on paper logs and later digitised.</li> <li>No twinned holes were drilled during the program.</li> <li>No adjustments were made to any of the assay data.</li> <li>Visual checks of data were completed.</li> </ul> <p>Verification of sampling and assaying procedures for historic soil sampling and auger drilling is unknown.</p>

		No adjustments to any data has been made to the knowledge of Strata Minerals.
Location of data points	<ul style="list-style-type: none"> <li>Accuracy and quality of surveys used to locate drill holes (collar and down-hole surveys), trenches, mine workings and other locations used in Mineral Resource estimation.</li> <li>Specification of the grid system used.</li> <li>Quality and adequacy of topographic control.</li> </ul>	<p><b>NiWest Ltd / GME</b></p> <ul style="list-style-type: none"> <li>Drillholes completed by NiWest Ltd / GME were drilled and recorded in GDA94 Zone 51 using a handheld Garmin 12 XL GPS device with an accuracy of +/-15m.</li> </ul> <p><b>Aberfoyle</b></p> <ul style="list-style-type: none"> <li>Drillholes completed by Aberfoyle were drilled and recorded in AMG Zone 51, Datum AGD66. Collar locations were recorded using a differential GPS with an accuracy of +/- 5m.</li> </ul> <p>Historic soil sampling and auger drilling surveying procedures are not fully known. Maps of data points supplied in statutory annual reports for the area were georeferenced and digitised by Kalgoorlie Gold Mining. Details of surveying where available are provided below:</p> <p><b>Australian Selection Pty Ltd</b></p> <ul style="list-style-type: none"> <li>Grids were traversed by east west compass and pace grid lines 800 ft. apart, which were marked by coloured tape every 100' and a 3' wooden picket every 500'. Position of lines was checked on all available north south, mineral claim survey lines by measuring back to the surveyor pegs. The grids were then plotted as corrected grids and used as a topographical base for geological mapping, sample location and location of smaller grids.</li> </ul>

		<b>Kalgoorlie Gold Mining</b> <ul style="list-style-type: none"> <li>Surface sampling was completed and recorded in GDA94 Zone 51 using a handheld GPS. Accuracy is unknown but assumed to be +/- 5m.</li> </ul>
<i>Data spacing and distribution</i>	<ul style="list-style-type: none"> <li><i>Data spacing for reporting of Exploration Results.</i></li> <li><i>Whether the data spacing and distribution is sufficient to establish the degree of geological and grade continuity appropriate for the Mineral Resource and Ore Reserve estimation procedure(s) and classifications applied.</i></li> <li><i>Whether sample compositing has been applied.</i></li> </ul>	<b>NiWest Ltd / GME</b> <ul style="list-style-type: none"> <li>6 RC drillholes were completed on a close-spaced 20x10m pattern. Other details are unknown.</li> <li>Samples were collected in single meter intervals with no compositing applied.</li> </ul> <b>Aberfoyle</b> <ul style="list-style-type: none"> <li>9 RAB and 6 RC holes were drilled</li> <li>Historic auger drilling was completed on a 400 (N-S) x 100m (E-W) pattern. Historic soil sampling was completed on a nominal 200 (N-S) x 30m (E-W) grid. Lag sampling rationale is unknown.</li> <li>Sample compositing was applied using 4m intervals, apparently at the geologists' discretion.</li> </ul> <p>Rock chip samples collected by Kalgoorlie Gold Mining were collected along traverses at the geologists' discretion.</p> <p>Sample spacing and distribution of historic surface sampling is variable and sufficient for first-pass exploration activities.</p>
<i>Orientation of data in relation to</i>	<ul style="list-style-type: none"> <li><i>Whether the orientation of sampling achieves unbiased sampling of possible structures and the extent to which this is known, considering the deposit type.</i></li> </ul>	<ul style="list-style-type: none"> <li>Based on the drilling completed to date, the orientation (both dip and plunge) of mineralisation is based on numerical Au assay values.</li> <li>Orientation of any mineralised structure is undefined.</li> <li>Drilling intercepts are reported as down-hole width.</li> </ul>



geological structure	<ul style="list-style-type: none"> <li>If the relationship between the drilling orientation and the orientation of key mineralised structures is considered to have introduced a sampling bias, this should be assessed and reported if material.</li> </ul>	<ul style="list-style-type: none"> <li>All surface sampling has been completed approximately perpendicular to interpreted structures and geology.</li> </ul>
Sample security	<ul style="list-style-type: none"> <li>The measures taken to ensure sample security.</li> </ul>	<ul style="list-style-type: none"> <li>The sample security of previous owners is unknown; however, the samples were assayed at reputable laboratories, including SGS, ALS, Genalysis, and Bureau Veritas where strict sample security measures are undertaken.</li> </ul>
Audits or reviews	<ul style="list-style-type: none"> <li>The results of any audits or reviews of sampling techniques and data.</li> </ul>	<ul style="list-style-type: none"> <li>All drilling and surface sampling has been plotted, checked in section and three dimensions to ensure that historic drilling, drill intercepts, hole locations, and surface sampling locations are consistent.</li> </ul>

## Section 2: Reporting of Exploration Results

(Criteria listed in section 1, also apply to this section.)

Criteria	JORC Code explanation	Commentary
Mineral tenement and land tenure status	<ul style="list-style-type: none"> <li>Type, reference name/number, location and ownership including agreements or material issues with third parties such as joint ventures, partnerships, overriding royalties, native title interests, historical sites, wilderness or national park and environmental settings.</li> <li>The security of the tenure held at the time of reporting along with any known impediments to obtaining a licence to operate in the area.</li> </ul>	<ul style="list-style-type: none"> <li>The Zelica South Project consists of 1 tenement – E39/2188 which is located 170km north-northeast of Kalgoorlie.</li> <li>The tenement was granted on 09/04/2021 to Yerilla Nickel Pty Ltd, a fully owned subsidiary of Kalgoorlie Gold Mining and formerly Ardea Resources.</li> <li>There are no joint ventures or other ownership agreements.</li> <li>Native title claim group is Nyalpa Piniku NNTT5628.</li> </ul>

Criteria	JORC Code explanation	Commentary
		<ul style="list-style-type: none"> <li>There is one registered aboriginal heritage site in the northern extremity of E39/2188 – “Eucalyptus Well 01”, ID15788 consists of artefacts/scatter and a quarry.</li> <li>There are no material issues with tenure status.</li> <li>No known royalites or encumbrances exist</li> </ul>
Exploration done by other parties	<ul style="list-style-type: none"> <li>Acknowledgment and appraisal of exploration by other parties.</li> </ul>	<ul style="list-style-type: none"> <li>Centenary International Mining (CIM) held ground that overlaps with the present eastern half of E39/2188 in the mid-late 1980’s, completing field reconnaissance and mapping, rock chip sampling and regional auger drilling on a broad 400x100m grid. In addition, CIM completed costeaning and limited, targeted RC drilling across the Murphy Well prospects (partially excised from E39/2188).</li> <li>Delta Gold worked the ground in the early 1990’s, competing regional bulk soil surface geochemistry on very wide 500x500m centres, together with limited lag and rock chip sampling.</li> <li>Mining Project Investors and Aberfoyle Resources completed nickel laterite focused exploration over the area in the mid 1990’s, with a very limited number of RAB and RC holes completed over E39/2188. Drillholes were also analysed for gold.</li> <li>More recently, NiWest Ltd (subsidiary of GME Resources Ltd) completed a short program of RC drilling at Eucalyptus Bore.</li> <li>Kalgoorlie Gold Mining held E39/2188 from 2022-2025 and have completed desktop reviews, georeferencing of historical exploration data, reconnaissance field work and</li> </ul>

Criteria	JORC Code explanation	Commentary
		collected a total of 65 surface samples in the period 9/04/2022 to the release of this report.
Geology	<ul style="list-style-type: none"> <li><i>Deposit type, geological setting and style of mineralisation.</i></li> </ul>	<p>The local Zelica South Project area consists predominantly of a succession of ultramafic and mafic flow and intrusive rocks, with interflow sediments of mixed chemical and volcanic origin. This sequence was later intruded by late Archaean granite plutons and Proterozoic dykes. Within this area the dominant structural feature is the Eucalyptus Syncline, an asymmetrical south-southeast plunging fold structure. The Eucalyptus Syncline has been faulted on the eastern margin by north-south oriented faulting associated with the Celia Fault, marking the western margin of the Laverton Tectonic Zone. To the west the syncline has been truncated by the Mount Colindina Granodiorite pluton, and to the south, truncated by the west-northwest trending Honman Fault.</p>
Drill hole Information	<ul style="list-style-type: none"> <li><i>A summary of all information material to the understanding of the exploration results including a tabulation of the following information for all Material drill holes:</i> <ul style="list-style-type: none"> <li><i>easting and northing of the drill hole collar</i></li> <li><i>elevation or RL (Reduced Level – elevation above sea level in metres) of the drill hole collar</i></li> <li><i>dip and azimuth of the hole</i></li> <li><i>down hole length and interception depth</i></li> <li><i>hole length.</i></li> </ul> </li> </ul>	<ul style="list-style-type: none"> <li>Historic gold intercepts and material information for all drillholes and surface sampling available have been compiled in tables 1 to 5.</li> </ul>

Criteria	JORC Code explanation	Commentary
	<ul style="list-style-type: none"> <li><i>If the exclusion of this information is justified on the basis that the information is not Material and this exclusion does not detract from the understanding of the report, the Competent Person should clearly explain why this is the case.</i></li> </ul>	
Data aggregation methods	<ul style="list-style-type: none"> <li><i>In reporting Exploration Results, weighting averaging techniques, maximum and/or minimum grade truncations (eg cutting of high grades) and cut-off grades are usually Material and should be stated.</i></li> <li><i>Where aggregate intercepts incorporate short lengths of high grade results and longer lengths of low grade results, the procedure used for such aggregation should be stated and some typical examples of such aggregations should be shown in detail.</i></li> <li><i>The assumptions used for any reporting of metal equivalent values should be clearly stated.</i></li> </ul>	<ul style="list-style-type: none"> <li>Weighted averaging has been used in the reporting of a single drill intercept in this report. No other data aggregation methods have been used in the reporting of exploration results.</li> </ul>
Relationship between mineralisation widths and intercept lengths	<ul style="list-style-type: none"> <li><i>These relationships are particularly important in the reporting of Exploration Results.</i></li> <li><i>If the geometry of the mineralisation with respect to the drill hole angle is known, its nature should be reported.</i></li> <li><i>If it is not known and only the down hole lengths are reported, there should be a clear statement to this effect (eg 'down hole length, true width not known').</i></li> </ul>	<ul style="list-style-type: none"> <li>Drilling data is reported in downhole widths. Geometry of geology for true-width calculation is undefined.</li> <li>Surface sampling data are point samples and their relationships with mineralised widths are undefined.</li> </ul>



Criteria	JORC Code explanation	Commentary
<i>Diagrams</i>	<ul style="list-style-type: none"> <li><i>Appropriate maps and sections (with scales) and tabulations of intercepts should be included for any significant discovery being reported. These should include, but not be limited to a plan view of drill hole collar locations and appropriate sectional views.</i></li> </ul>	<ul style="list-style-type: none"> <li>Please refer to the main body of text.</li> </ul>
<i>Balanced reporting</i>	<ul style="list-style-type: none"> <li><i>Where comprehensive reporting of all Exploration Results is not practicable, representative reporting of both low and high grades and/or widths should be practiced to avoid misleading reporting of Exploration Results.</i></li> </ul>	<ul style="list-style-type: none"> <li>Where available, all available Au assays are presented in tables 1 to 4 of this announcement for clarity, including drill holes and surface samples that returned no significant mineralisation above 0.3g/t Au.</li> <li>Representative higher-grade intervals have been presented in the text and table 5.</li> </ul>
<i>Other substantive exploration data</i>	<ul style="list-style-type: none"> <li><i>Other exploration data, if meaningful and material, should be reported including (but not limited to): geological observations; geophysical survey results; geochemical survey results; bulk samples – size and method of treatment; metallurgical test results; bulk density, groundwater, geotechnical and rock characteristics; potential deleterious or contaminating substances.</i></li> </ul>	<ul style="list-style-type: none"> <li>Relevant meaningful and material exploration data has been documented in the body of the report.</li> </ul>
<i>Further work</i>	<ul style="list-style-type: none"> <li><i>The nature and scale of planned further work (eg tests for lateral extensions or depth extensions or large-scale step-out drilling).</i></li> <li><i>Diagrams clearly highlighting the areas of possible extensions, including the main geological interpretations and future drilling areas, provided this information is not commercially sensitive.</i></li> </ul>	<ul style="list-style-type: none"> <li>Further exploration work will include a review of all historic work completed across the project and reconnaissance sampling and geological mapping.</li> <li>Further work following approvals will include aircore drilling along and across mineralised trends.</li> </ul>



ASX:SMX

## ASX Announcement

12 December 2025