



Targeting New, Major Gold Discoveries across the Proven Leonora Gold Region

Investor Presentation
December 2025

ASX:GA8

DISCLAIMERS



This presentation prepared by GoldArc Resources Limited ("Company") does not purport to contain all the information that a prospective investor may require in connection with any potential investment in the Company. You should not treat the contents of this presentation, or any information provided in connection with it, as financial advice, financial product advice or advice relating to legal, taxation or investment matters. No representation or warranty, express or implied, is made as to the fairness, accuracy, completeness or correctness of the information, opinions and conclusions contained in this presentation. This presentation is provided expressly on the basis that you will carry out your own independent inquiries into the matters contained in the presentation and make your own independent decisions about the affairs, financial position or prospects of the Company. The Company reserves the right to update, amend or supplement the information at any time in its absolute discretion (without incurring any obligation to do so). To the maximum extent permitted by law, none of the Company its directors, employees or agents, advisers, nor any other person accepts any liability, including, without limitation, any liability arising from fault or negligence on the part of any of them or any other person, for any loss arising from the use of this presentation or its contents or otherwise arising in connection with it. This presentation is not an offer, invitation, solicitation or other recommendation with respect to the subscription for, purchase or sale of any security, and neither this presentation nor anything in it shall form the basis of any contract or commitment whatsoever.

This presentation may contain forward looking statements that are subject to risk factors associated with mineral exploration, mining and production businesses. It is believed that the expectations reflected in these statements are reasonable but they may be affected by a variety of variables and changes in underlying assumptions which could cause actual results or trends to differ materially, including but not limited to price fluctuations, actual demand, currency fluctuations, drilling and production results, reserve estimations, loss of market, industry competition, environmental risks, physical risks, legislative, fiscal and regulatory changes, economic and financial market conditions in various countries and regions, political risks, project delay or advancement, approvals and cost estimates. This presentation also contains reference to certain intentions, expectations, future plans, strategy and prospects of the Company. Those intentions, expectations, future plans, strategy and prospects may or may not be achieved. They are based on certain assumptions, which may not be met or on which views may differ and may be affected by known and unknown risks. In particular, there is a risk that the Company will not be able to expand or upgrade its existing JORC resource. The performance and operations of the Company may be influenced by a number of factors, many of which are outside the control of the Company.

No representation or warranty, express or implied, is made by the Company, or any of its directors, officers, employees, advisers or agents that any intentions, expectations or plans will be achieved either totally or partially or that any particular rate of return will be achieved. Given the risks and uncertainties that may cause the Company's actual future results, performance or achievements to be materially different from those expected, planned or intended, recipients should not place undue reliance on these intentions, expectations, future plans, strategy and prospects.

The Company does not warrant or represent that the actual results, performance or achievements will be as expected, planned or intended. These forward-looking statements are expressed in good faith and believed to have a reasonable basis.

These statements reflect current expectations, intentions or strategies regarding the future and assumptions based on currently available information. Should one or more risks or uncertainties materialise, or should underlying assumptions prove incorrect, actual results may vary from the expectations, intentions and strategies described in this announcement. The forward-looking statements are made as at the date of this announcement and the Company disclaims any intent or obligation to update publicly such forward looking statements, whether as the result of new information, future events or results or otherwise.

Competent Persons Statement

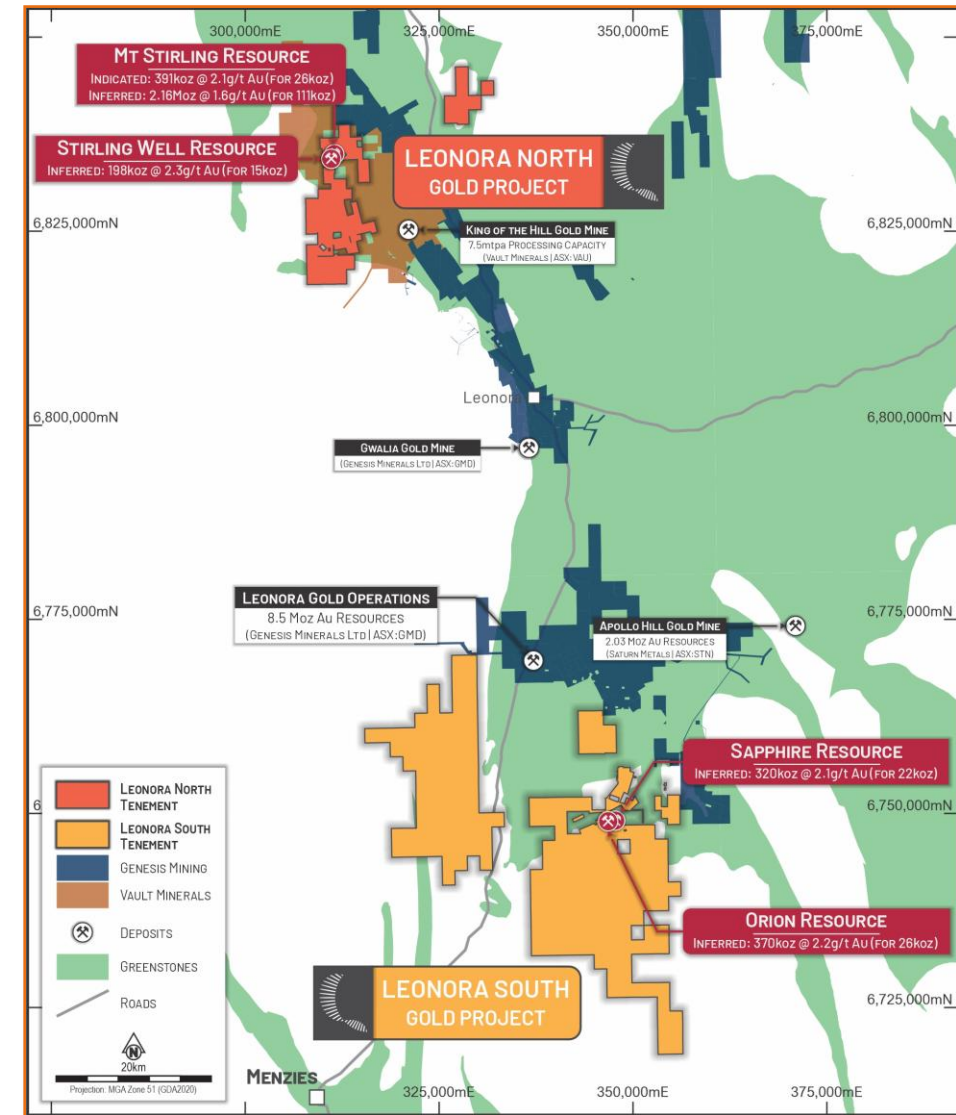
The information in this report as it relates to exploration results and geology is based on and fairly represents, information and supporting documentation that was compiled by Mr. Ziggy Lubieniecki, who is a director, consultant and shareholder of the Company has sufficient experience which is relevant to the styles of mineralisation and types of deposit under consideration and to the activities which he is undertaking to qualify as a Competent Person as defined in the 2012 Edition of the Australasian Code for Reporting of Exploration Results, Mineral Resources and Ore Reserves'. Mr. Lubieniecki consents to the inclusion in the report of the matters based on the information in the form and context in which it appears..

The information in this announcement that relates to the Orion-Sapphire Mineral Resources is contained in the ASX announcements released on 28 May 2024. The information in this announcement that relates to the gold Mineral Resources for the Mt Stirling Project is contained in the ASX announcements released on 25 February 2019, 29 January 2020 and 5 September 2022. The Company confirms that it is not aware of any new information or data that materially affects the information in the relevant market announcements, and that all material assumptions and technical parameters underpinning the estimates in the relevant announcement continue to apply and have not materially changed. that the Company confirms that the form and context in which the Competent Persons findings are presented have not been materially modified from the original announcements.

Where the Company refers to exploration results in this announcement (referencing previous releases made to the ASX), the Company confirms that it is not aware of any new information or data that materially affects the information included in the original market announcements. The Company confirms that the form and context in which the Competent Person's findings are presented have not been materially modified from the original market announcement.

LEONORA GOLD PROJECT Belt-scale Potential

- 936km² covering two large project area (Leonora North and Leonora South) + 75km of underexplored prospective strike.
- Region known for high-grade deposits, established infrastructure, and significant historical production.
- High volume of historic workings across both projects, with areas of limited to no modern exploration.
- Significant potential for new discoveries, ounces around known resources and resource growth.
- Existing JORC Resource of **200koz at 1.8 g/t Au**, including high-grade zones.
 - Leonora North hosts a combined JORC MRE of **152koz @ 1.7 g/t Au**.
 - Near-surface Inferred JORC MRE of **48koz @ 2.2 g/t Au** at Leonora South.



See Slide 30 for JORC Resource Table

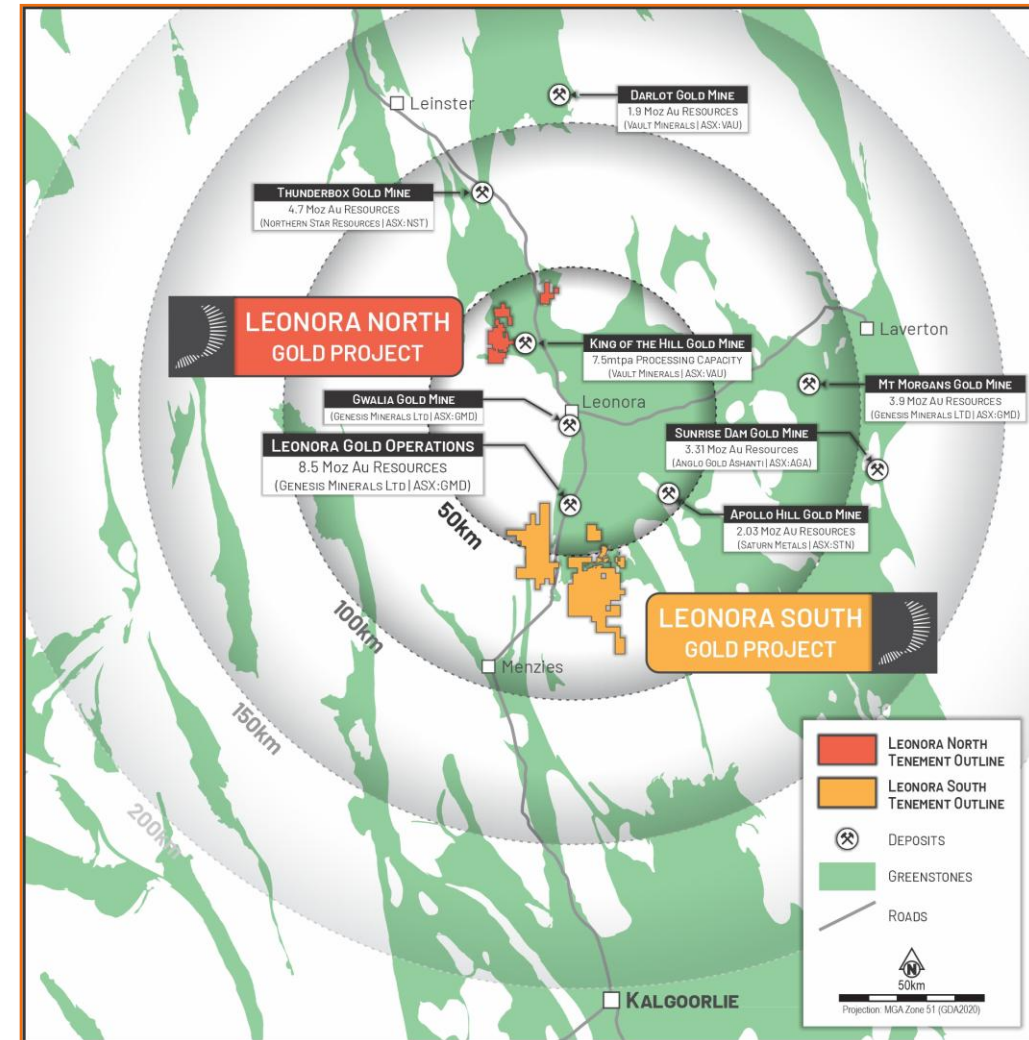
LEONORA GOLD PROJECT A Premier Gold Region

GoldArc's Leonora Gold Projects share key geological settings with several nearby operating gold mines and major deposits.

Proximity to operating mills provides potential for early cash flow opportunities.

- **GENESIS MINERALS (ASX:GMD): \$7.04B MC***
Leonora Operations (8.5 Moz Au Resources)¹
- **VAULT MINERALS (ASX:VAU): \$4.97B MC***
Darlot Gold Mine (1.9 Moz Au Resources)²
King of the Hills mine (7.5 Mtpa Processing Capacity)³
- **NORTHERN STAR RESOURCES (ASX:NST): \$35.38B MC***
Thunderbox Mine (4.7Moz Au Resources)⁴

1. Genesis Minerals Ltd (ASX:GMD) ASX announcement 21 August 2025 "Annual Report"
2. Vault Minerals Ltd (ASX:VAU) ASX announcement 15 September 2025 "Resource and Reserve Statement"
3. Vault Minerals Ltd (ASX:VAU) ASX announcement 26 May 2025 "KoTH open pit Ore Reserve growth underpins Stage 2 plant upgrade"
4. Northern Star Resources Ltd (ASX:NST) ASX announcement 21 August 2025 "Annual Report to shareholders"
* Market Capitalisation as at 8 October 2025



\$39.2M
MARKET
CAP

as at 28 Nov 25 @ \$0.069

~\$2.4M
CASH

as at 30 Sep 2025

~567.5M
SHARES
ON ISSUE

52.5M
UNLISTED
OPTIONS

Ex Price: \$0.10, Exp: 2 Sep 2027
Ex Price: \$0.40, Exp: 23 Jun 2026

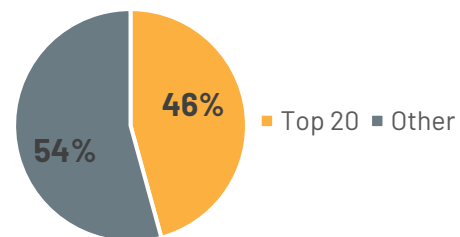
~253M
LISTED
OPTIONS

Avg Ex Price: \$0.11,
Exp: 1 Feb 2026 – 30 Jun 2028

8.6M
PERFORMANCE
RIGHTS

Based on resource and
share price milestones

Shareholders



Board & Management

Skilled in taking high grade, economic resources from discovery through to production

Paul Stephen
Managing
Director



- Co-founder & exec Director of Crusader Resources Ltd (2.8Moz Au)
- Strong record of delivering projects from discovery to production
- In-depth experience in commercial and corporate

Paul Summers
Non-Executive
Chairman



- +35 years experience legal practitioner
- Lead Counsel and founder of Summers Legal Pty Ltd
- Advised complex transactions, joint ventures, financing, and more

Ziggy Lubieniecki
Non-Executive
Technical Director



- +30 years exploration and mining experience
- Held senior positions at Plutonic, Australian Platinum Mines and Gold Road Resources
- Successes include discovery of the 6.2Moz Gruyere gold deposit

Leonard Math
Non-Executive
Director, CoSec
& CFO



- +15 years resources experience
- Co-Sec, CFO and Director roles for multiple ASX companies
- Chartered accountant including audit experience with Deloitte

Technical Team

Highly experienced exploration and complimentary specialist skills

Austin Gow
Senior
Geologist



- +6 years experience with ASX-listed explorations and development companies
- Lead greenfields and brownfields exploration programs across gold and base metals

LEONORA GOLD PROJECT



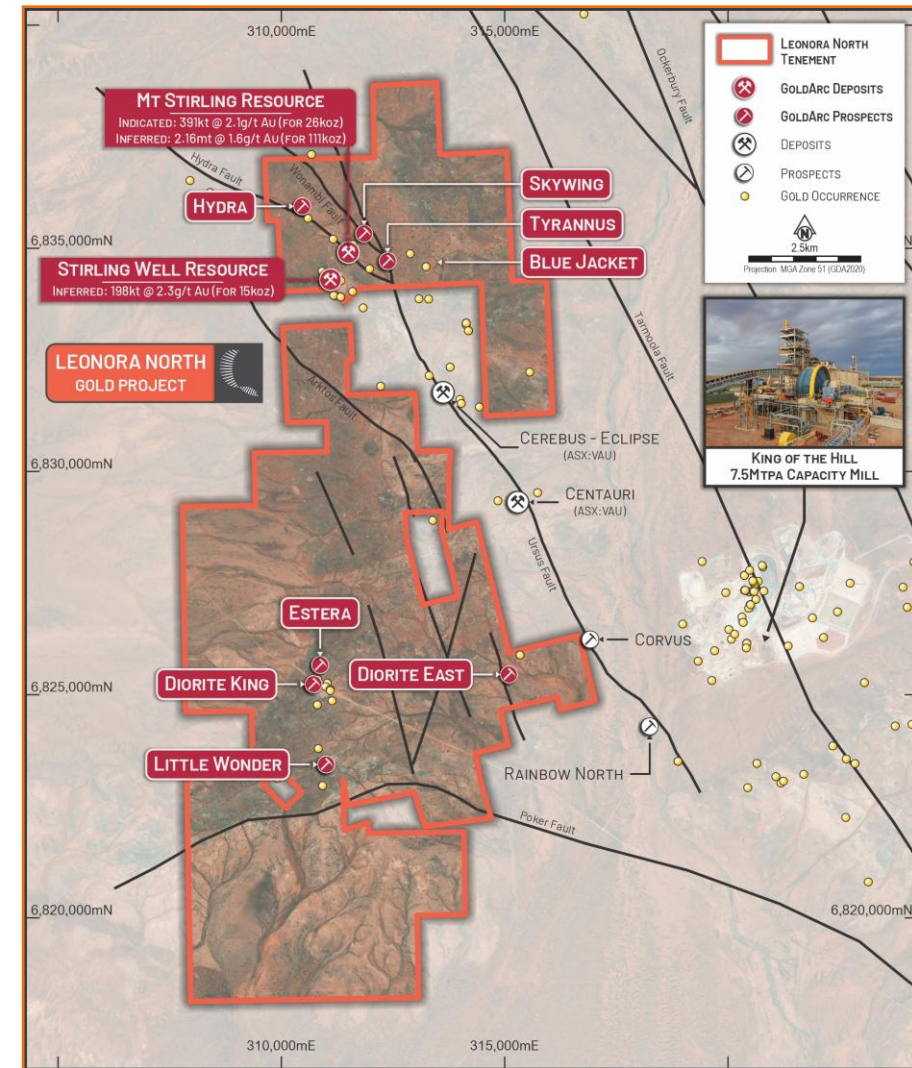
Leonora North

LEONORA NORTH A Renewed Resource Growth Strategy

Leonora North Gold Project

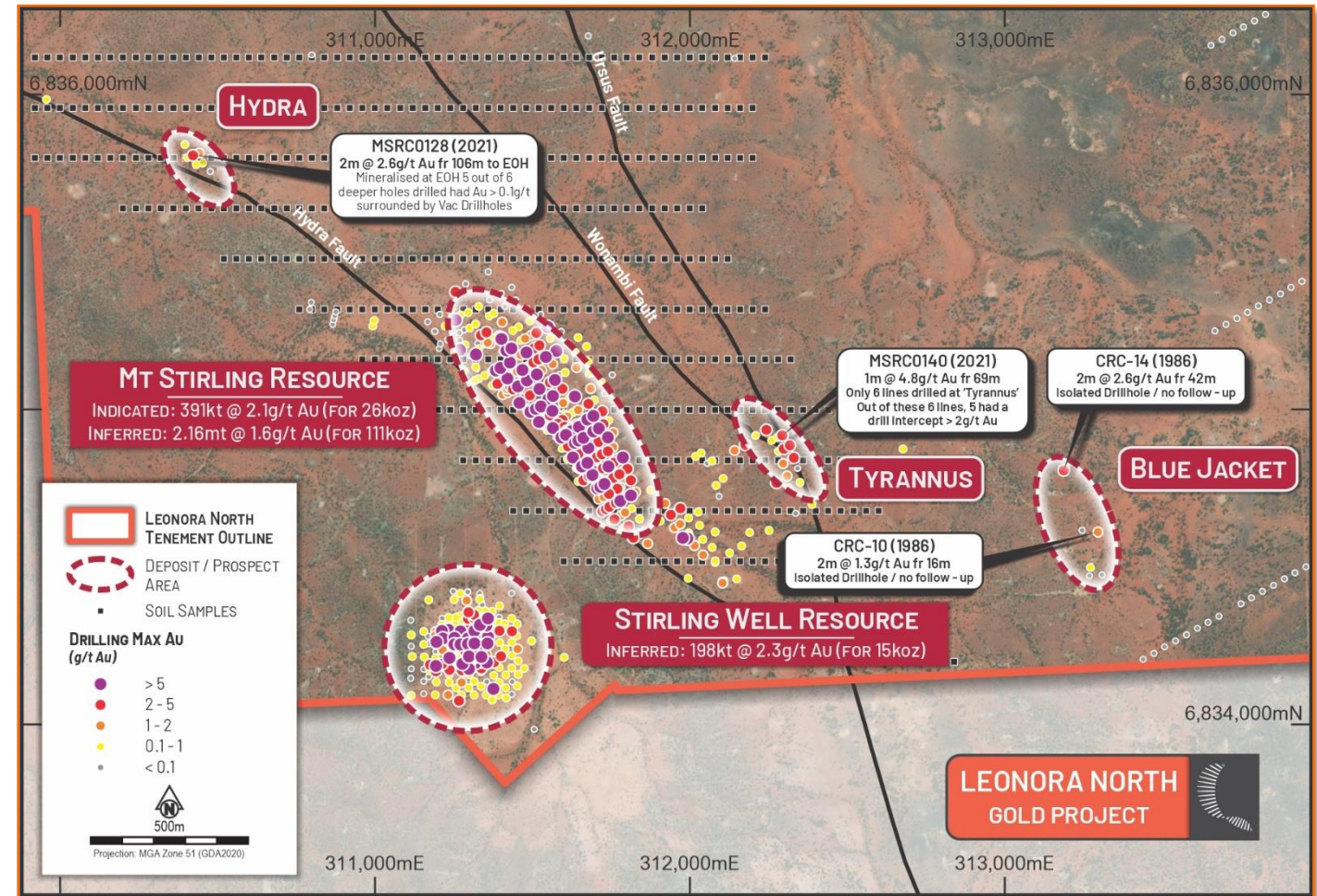
- Located 40km NE of Leonora, and 5km from +4Moz King of the Hills gold mine¹.
- Large under-explored strike length, along the Granite-Greenstone contact and gold carrying faults systems.
- ~12km of fertile ground along the fertile Ursus Fault Line, with ~9km of this area still to be drill tested.
- Ursus-Hydra Fault and associated splays currently contain >300k Oz Au (Mt Stirling, Centauri and Cerebus Deposits).
- Hosts a combined gold JORC Mineral Resource of **152,000oz @ 1.7g/t Au²**.

1. Vault Minerals Ltd (ASX:VAU) ASX announcement 15 September 2025 "Resource and Reserve Statement"
2. See Slide 30 for JORC Resource Table



LEONORA NORTH Untested, Parallel Mineralised Structures

- Comprehensive review identified multiple high-priority target areas along interpreted faults¹.
- Untested parallel structures identified at depth and along strike from GA8's existing resources.
- Delineated the Hydra Prospect along a connecting Hydra Fault – significant 1km untested structural corridor.
- Confirmed the Tyrannus Prospect situated on the parallel mineralised system 500m from Mt Stirling.
- Immediate drill target prioritisation underway.



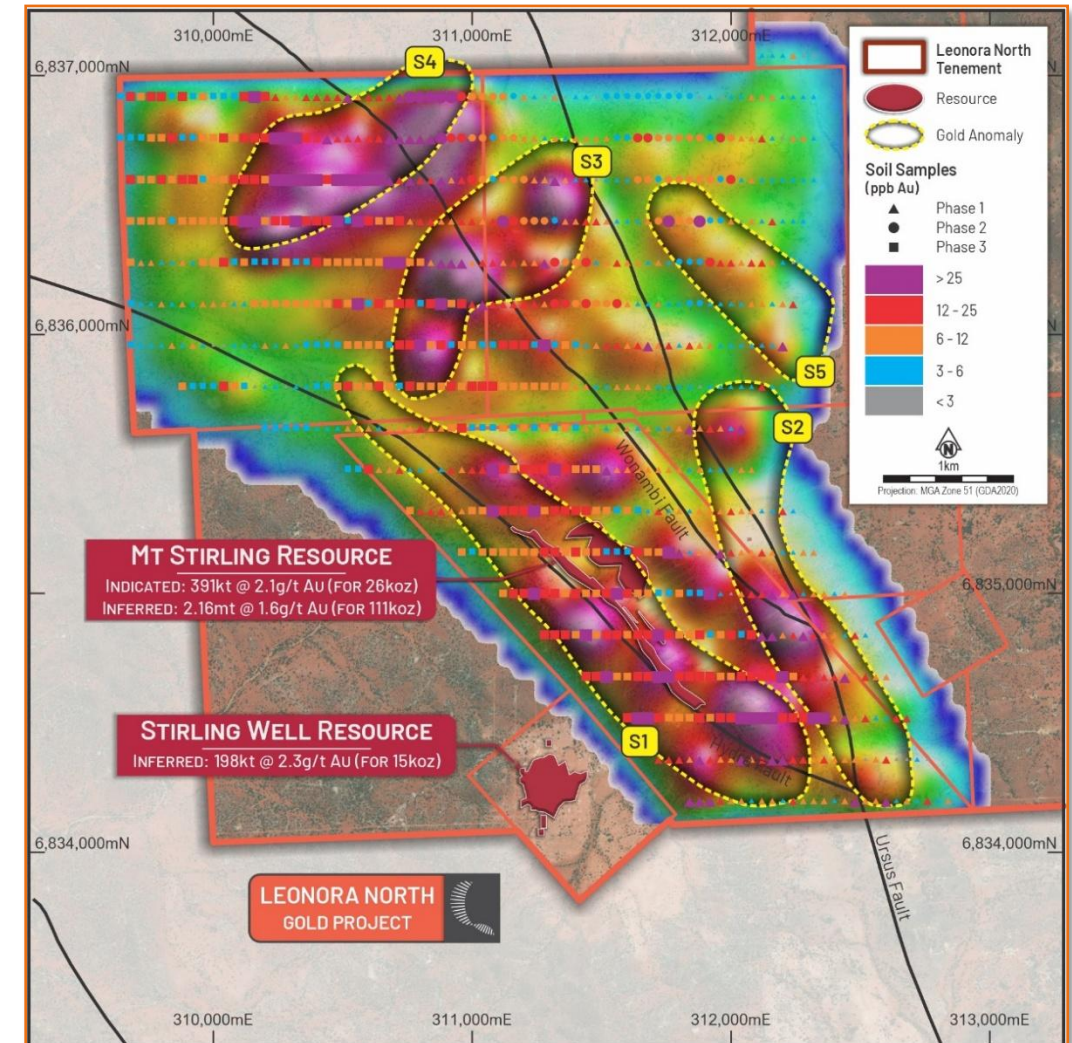
1. ASX announcement 9 September 2025 "Review at Leonora North provides clear focus for future work"

See Slide 30 for JORC Resource Table

LEONORA NORTH Multiple Untested Drill Targets Identified

Soil Sampling Program Completed Oct 2025¹

- 5 main gold anomalies defined from 902-sample soil program.
- Three new, high-priority anomalies identified (**S3, S4, S5**) that have never been drill tested.
- **Exceptional S4 Anomaly** – Priority target
 - Large scale, 1.2km long x 0.5km wide.
 - Geochemically stronger in size and grade than the anomaly over Mt Stirling deposit.
 - Coincides with favourable host geology (gabbro, basalt, quartz veining).
- **S1 (2.5km)**: Associated with Hydra Fault.
- **S2 (1.5km)**: Coincides with Tyrannus prospect, highlighting a potential separate mineralised structure
- **S3 (1.1km)**: Untested SW or.
- Systematic follow-up (infill soils, rock chipping) to advance new targets to maiden drilling.



1. ASX announcement 27 October 2025 "Multiple New, Untested Gold Targets Defined at Leonora North Project"

LEONORA GOLD PROJECT

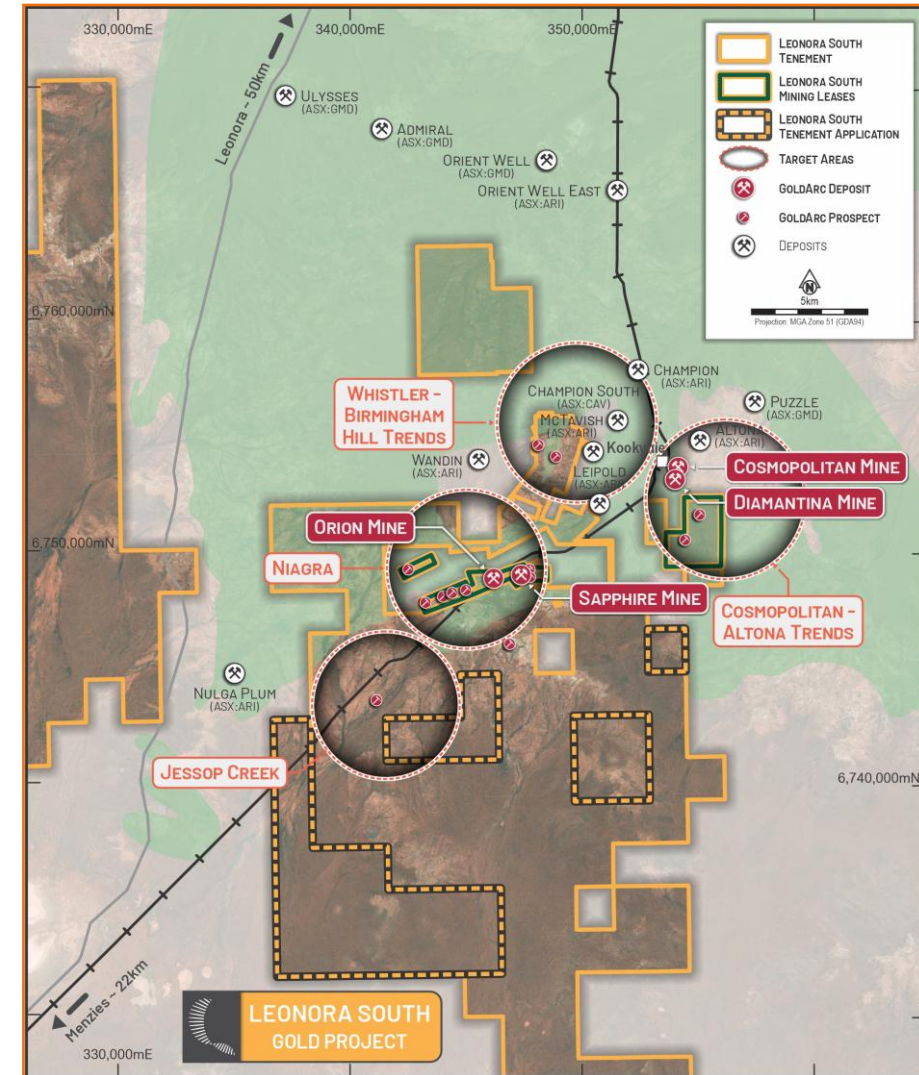


Leonora South

LEONORA SOUTH Targeting Multiple, Underexplored Areas

Leonora South Gold Project

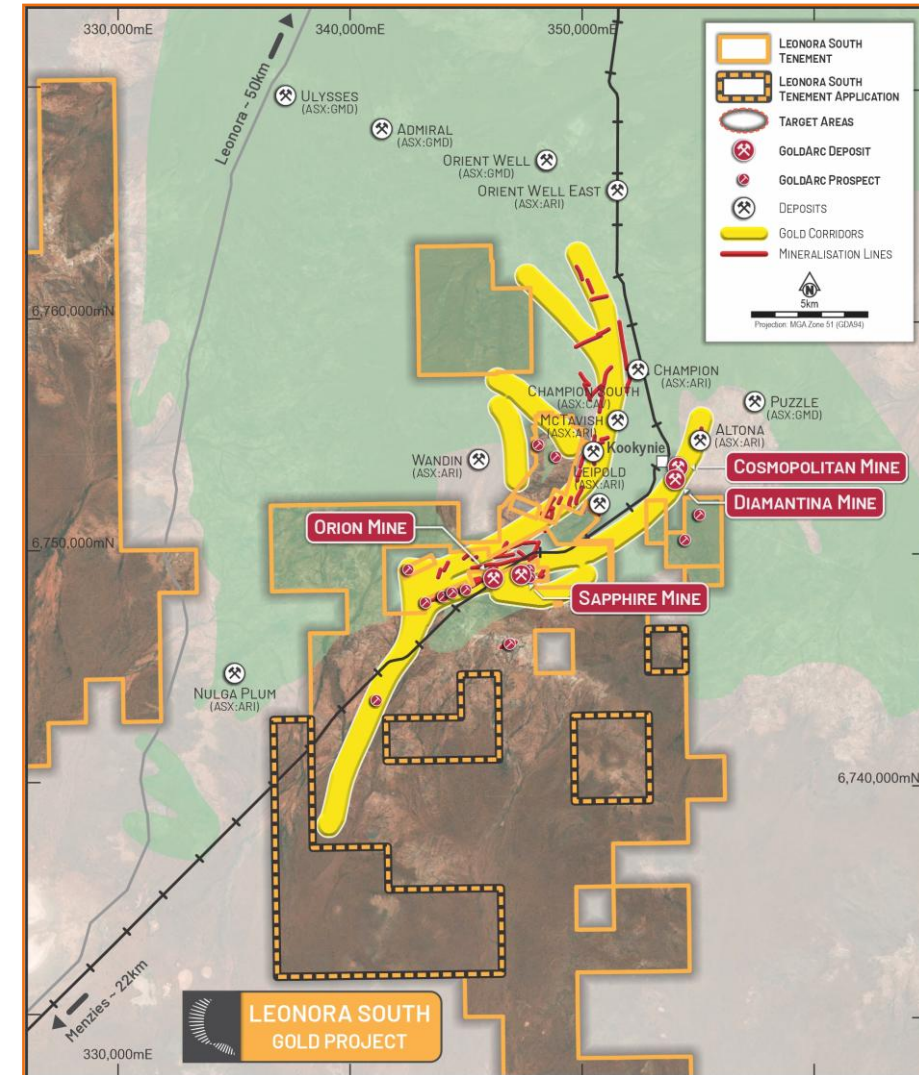
- 8 granted mining licenses ~50km south of Leonora within a known Archean Granite-Greenstone belt.
- Close proximity to multiple operating gold mines and mills.
- Four priority target areas identified:
 - Niagara
 - Whistler
 - Cosmopolitan
 - Jessop's Creek
- Current drilling focused on key, underexplored targets including:
 - Eclipse Prospect (Niagara)
 - Cosmopolitan South (Cosmopolitan)
 - Whistler / Woodpecker
 - Jessop's Creek



LEONORA SOUTH Targeting Known Mineralised Trends

- Project's gold mineralisation is hosted within a major structural corridor of the Norseman-Wiluna Greenstone belt, renowned for its significant gold endowment.
- Mineralisation primarily associated with mafic rocks which have favourable chemical and physical host for gold deposition.
- Nearby major gold deposits - **Genesis (ASX:GMD) 0.85Moz Ulysses, 0.58Moz Admiral and 0.30Moz Orient Well deposits¹** – potential geological analogues to GA8's exploration model.
- Observed mineralisation trend at Leonora South exhibits structural geometry characterised by 'snaking' from an E-W orientation to a dominant N-S orientation.
- Mineralisation observed as structurally controlled, and nearby major deposits often situated within structural dilations or intersections ('structural traps').
- GA8 focused on targeting structural repeats and extensions of the same geological trends and structural traps.

1. Genesis Minerals Ltd (ASX:GMD) ASX announcement 21 August 2025 "Annual Report"

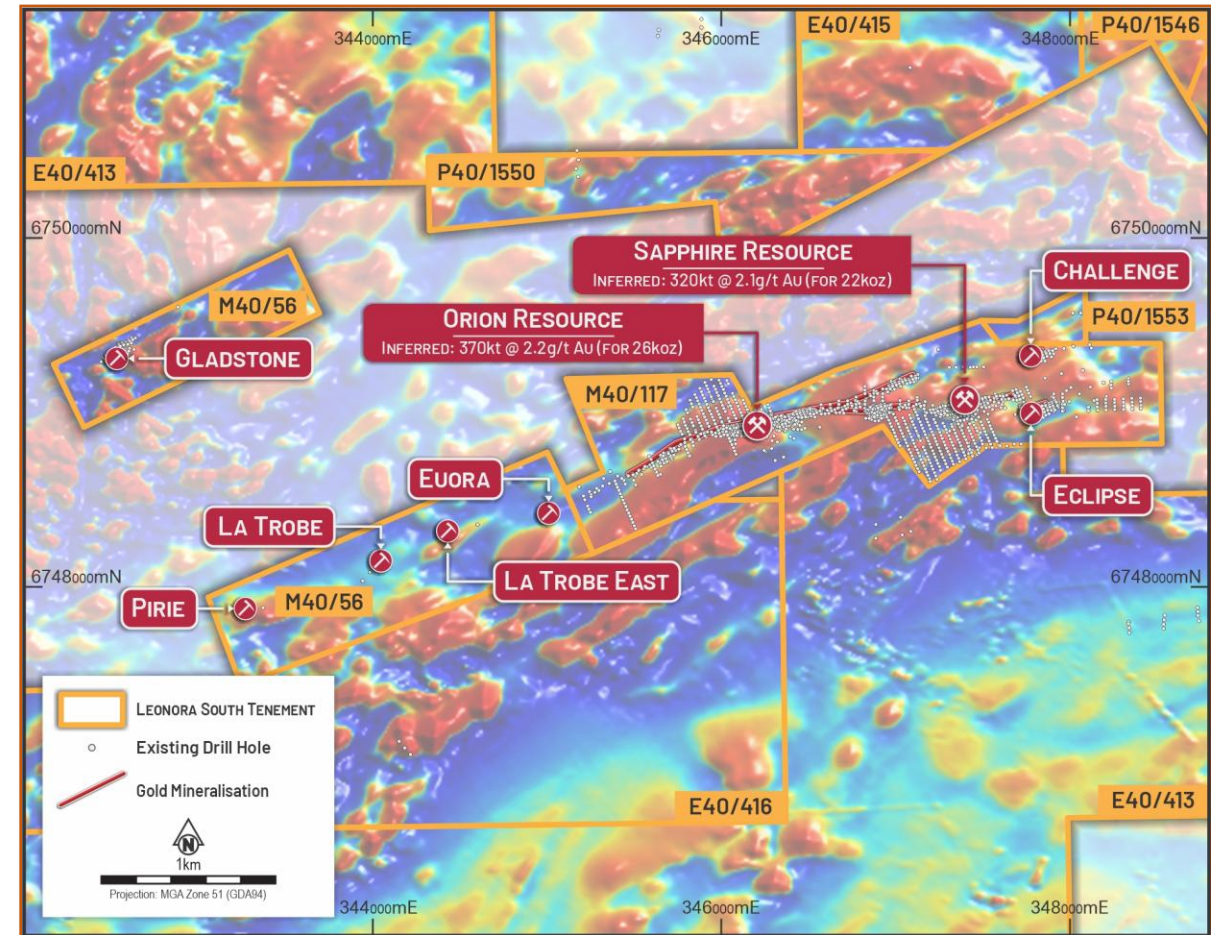


Niagara Target Area¹

- Magnetic anomaly identified (red/orange areas) which are typically associated with favourable mafic host rocks.
- Project hosts multiple, parallel quartz vein systems trending ENE and dipping south at 50° to 80° located ~1km apart.
- Stacked veins indicate potential for gold bearing hydrothermal fluids and broader mineralised zones.
- Observed offset zones (Eclipse and Missing Link) suggest mineralised structure was displaced by faulting, a key geological control resulting in high-grade zones.
- Known mineralisation defined over a combined strike length of +2km and down to 130m vertical depth. Remains open.
- Targeting based on the stacked offset veining model.

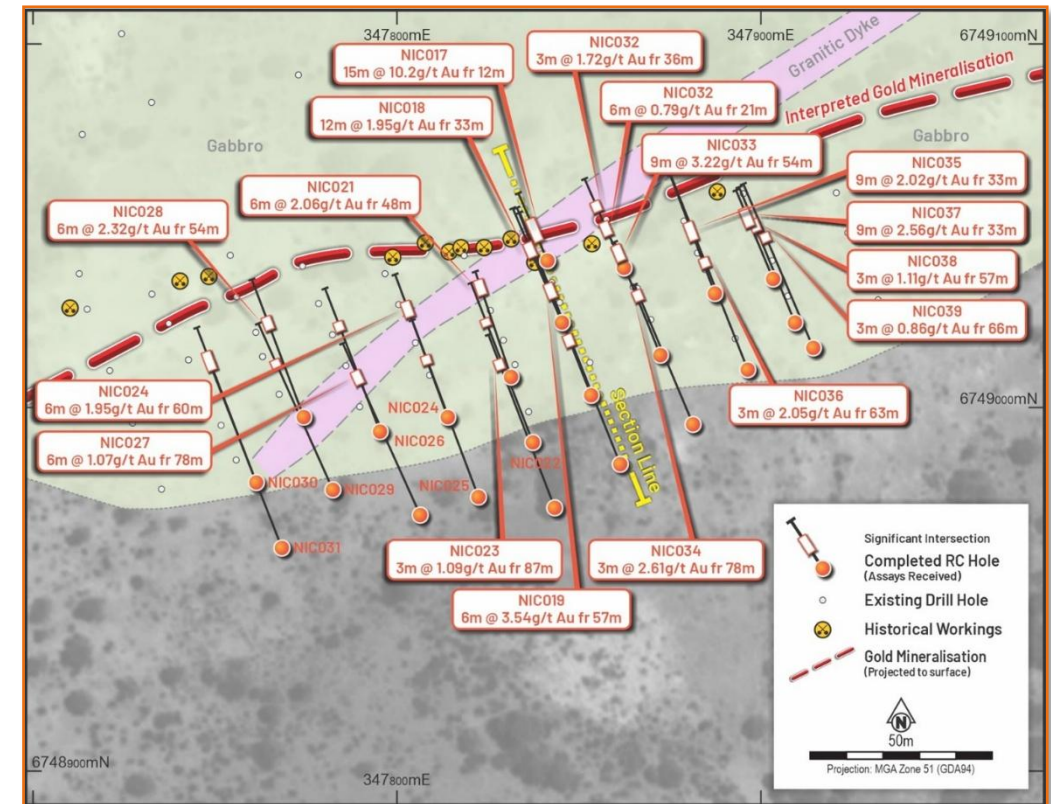
1. ASX Announcement 2 October 2025 "Gold System Confirmed at Eclipse & Challenge Prospects"

Stacked Offset Veining at Niagara Target Area



Niagara Target Area Challenge & Eclipse Prospects

- Oct 2025 3,000m RC drilling program tested newly identified, near-surface gold targets; Eclipse and Challenge.
- Both prospects along strike from GA8's JORC 2012 MRE of **21,600oz at 2.1g/t¹ Au** at Sapphire.
- Outstanding high-grade, near-surface gold intersections including²:
 - **14m at 7.49 g/t Au from 12m** in hole NIC017
 - **9m at 2.84 g/t Au from 34m** in hole NIC018
 - **2m at 7.50 g/t Au from 88m** in hole NIC023
 - **6m at 3.14 g/t Au from 60m** in hole NIC024
- Result has established Eclipse as a significant and high-priority target for immediate follow-up.



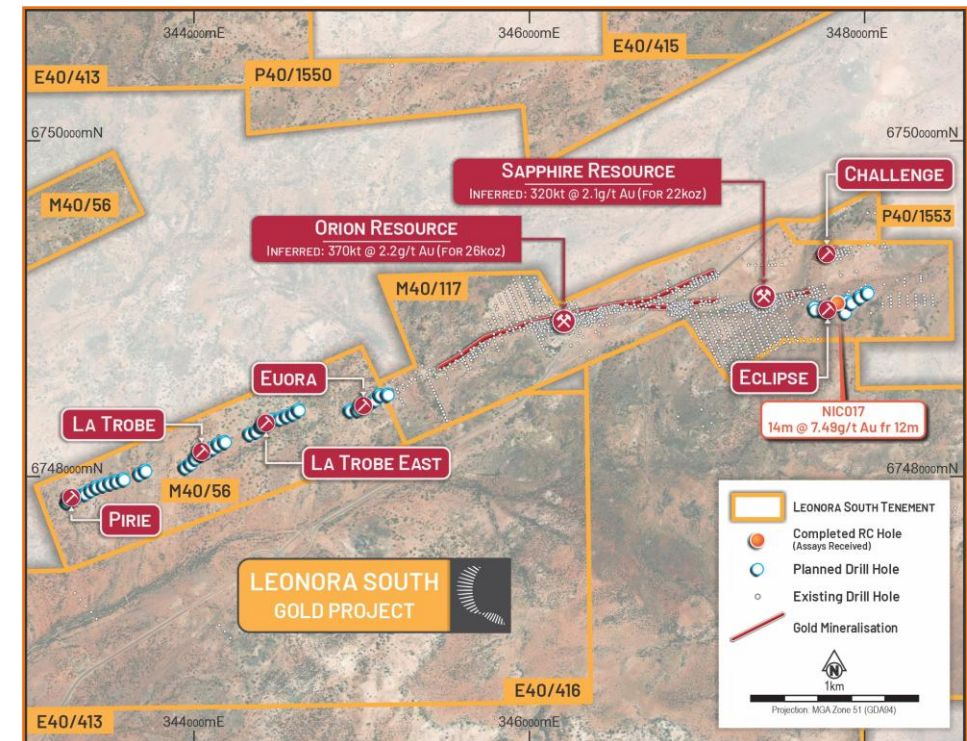
¹ See Slide 30 for JORC Resource Table

² ASX Announcement 2 October 2025 "Gold System Confirmed at Eclipse & Challenge Prospects"

LEONORA SOUTH Untested, High Priority Targets

Niagara Target Area High-Priority Targets

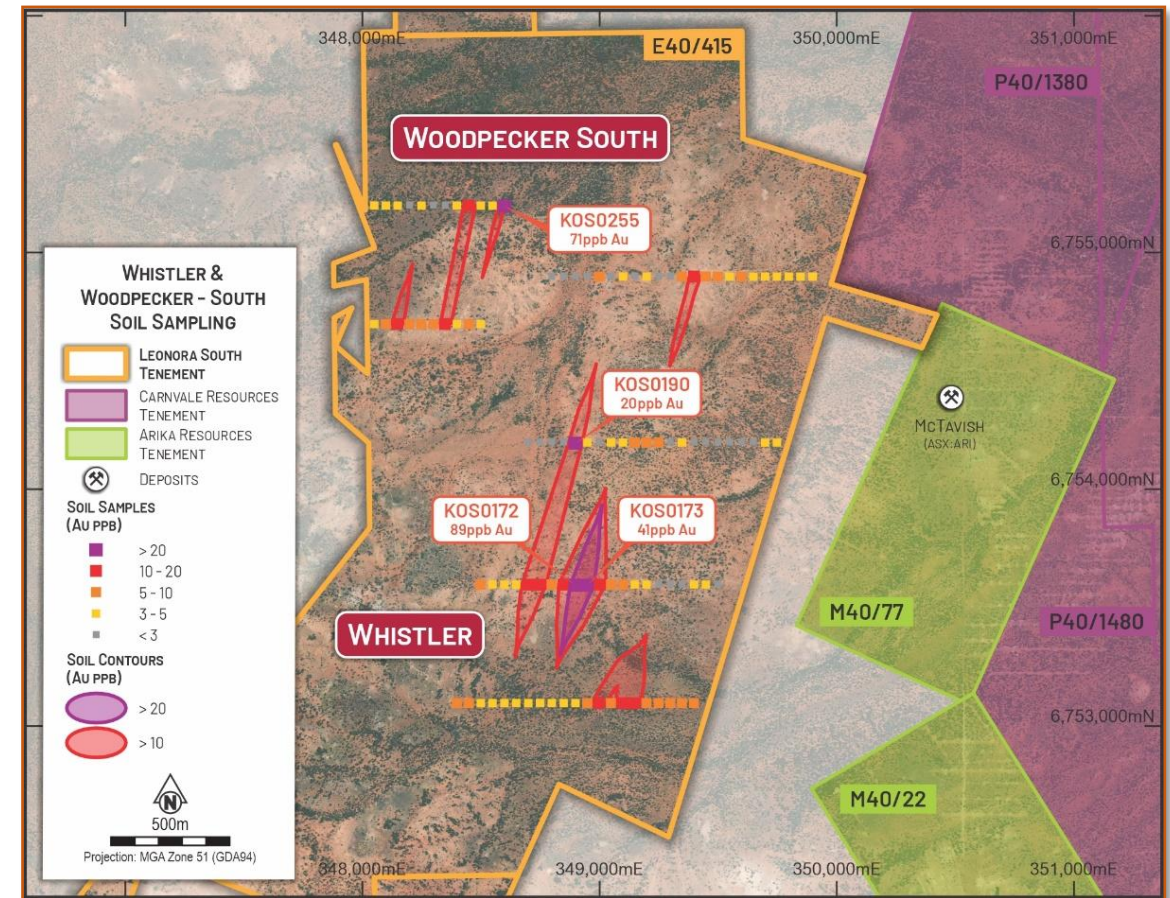
- Oct 2025 RC drill program has commenced at multiple prospects completed across multiple prospects.
- Target several underexplored prospects (Euroa, La Trobe and Pirie) including a 2km-long line of historical workings on M40/56
- Program tested for extensions of the high-grade mineralisation along strike and at depth at Eclipse.
- Follows up on significant July 2025 intercepts at Eclipse including **14m @ 7.49 g/t Au from 12m (NIC017)**¹
- Drilling is expected to take 2-3 weeks, with assays to follow.



¹ ASX Announcement 2 October 2025 "Gold System Confirmed at Eclipse & Challenge Prospects"

Whistler Target Area

- Mineralisation and structural extensions trending NNW – N – consistent with major gold-bearing shear zones in the Norseman-Wiluna belt.
- Area displays significant structural complexity, folding and shearing.
- Primarily situated within mapped Mafic and ultramafic rocks – favourable hosts rocks for orogenic gold deposits.
- Nov 2025 sampling over historic workings returned¹:
 - Strong, central-core anomaly with peak value of 89 ppb Au¹ (KOS172 – Whistler).
 - Peak sample of 71 ppb Au (KOS0255 – Woodpecker)
- Oct 2025 RC drilling completed at Woodpecker South and Whistler prospect – assay pending.
- 4,000m AC drill program to commence Nov 2025 at Whistler and Jessop Creek.



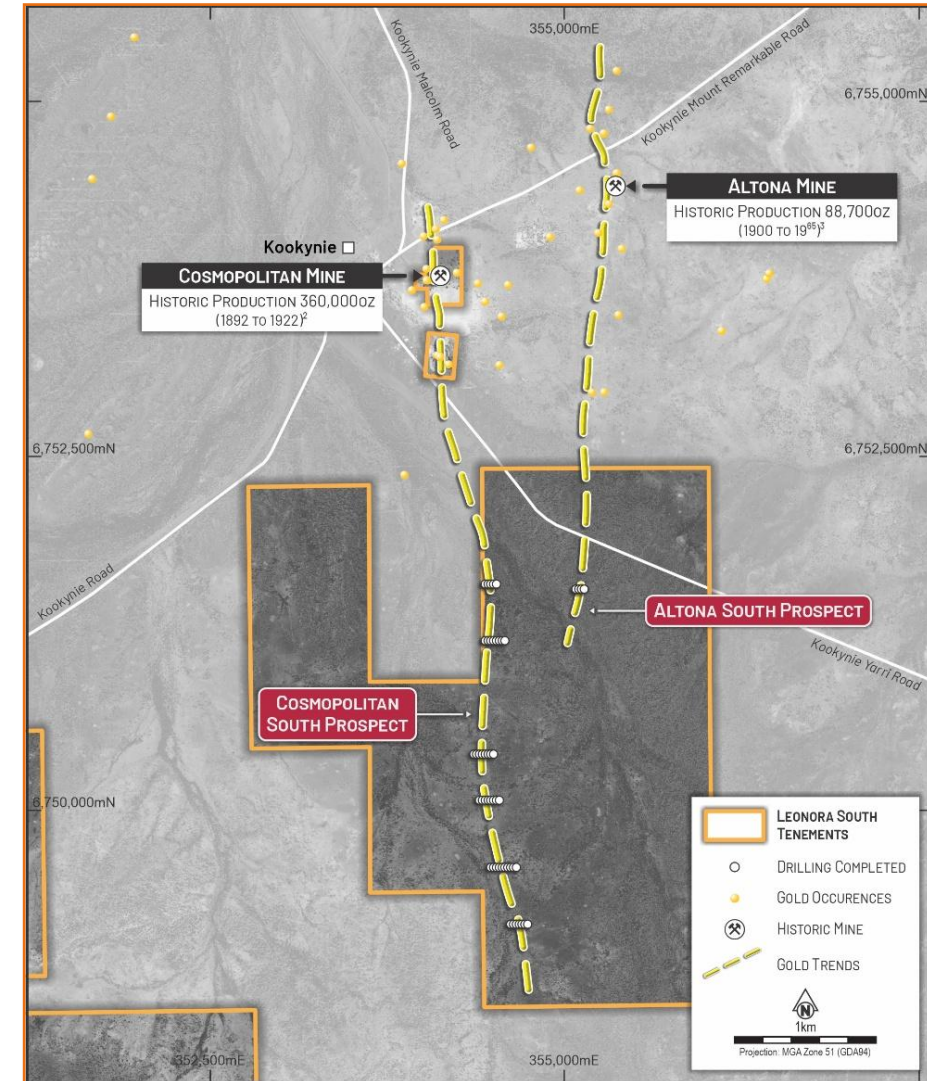
¹ ASX Announcement 1 December 2025 "High-Priority Targets Identified at Jessop's Creek and Whistler; Strategic Expansion to Leonora South Footprint"

LEONORA SOUTH Extensions of Historic Mines

Cosmopolitan Target Area

- Review of historic channel sampling data identified remnant high-grade mineralisation¹.
- 969 located samples (40%) from GA8 tenements M40/02 and M40/342 returned an **avg grade of 38.38 g/t Au over an avg width of 1.07m** including:
 - 68 samples returned +100 g/t Au
 - 227 returned +50 g/t Au
 - 476 returned +20 g/t Au
- Results highlight significant potential within the mine's developed areas, including:
 - **0.23m at 936.46 g/t Au** and **6.1m at 124.62 g/t Au** (L4 South Drive at 338.46RL)
 - **4.27m at 119.84 g/t Au** (L4 North Drive at 338.46RL)
 - **2.13m at 221.37 g/t Au** (L2-3 Winze at 370.41mRL)
 - **1.22m at 273.99 g/t Au** and **1.52m at 189.86 g/t Au** (L2 North Drive at 384.04RL)
 - **0.38m at 195.0 g/t Au** (L0-1 Stope Cumberland 422.29RL)

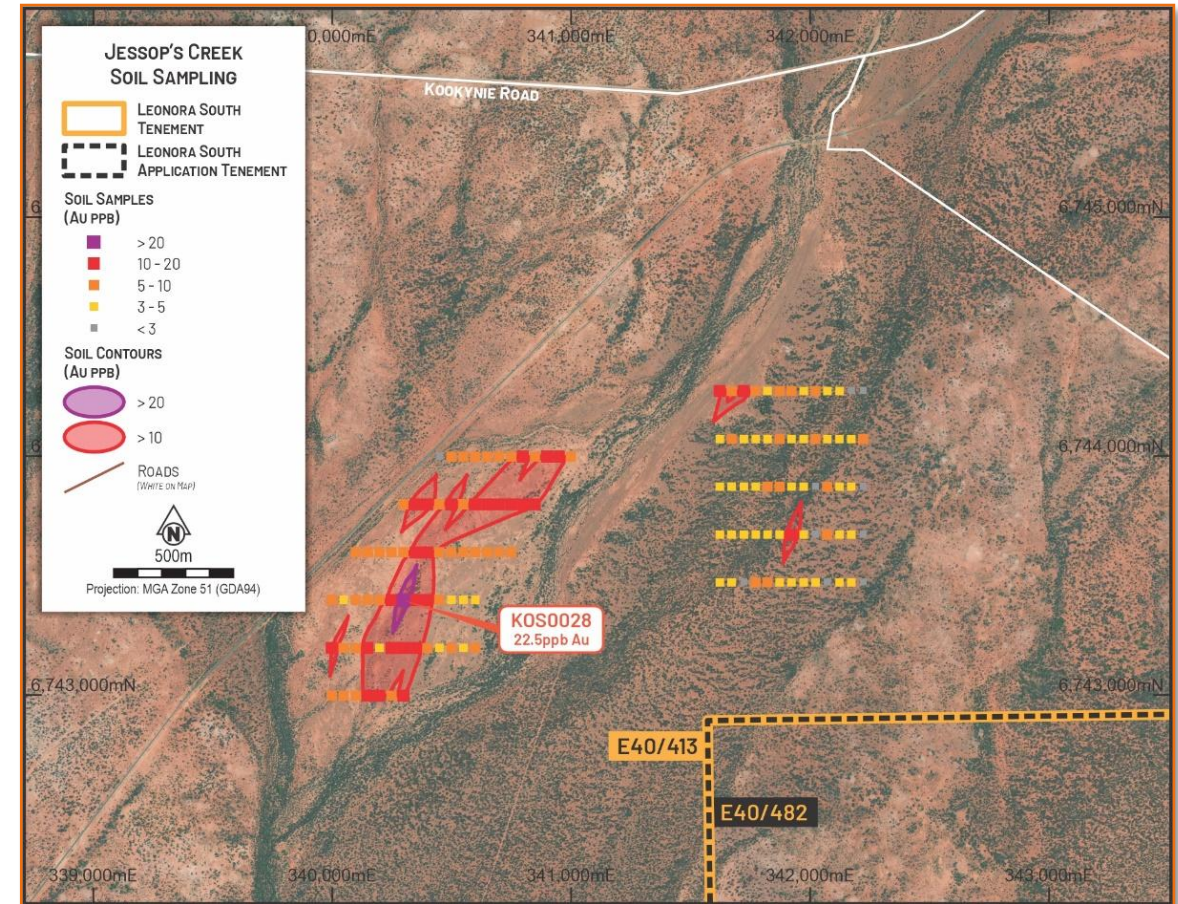
1. ASX announcement 20 October 2025 "Exceptional High-Grade Gold Identified in Historical Data review at Cosmopolitan Mine"



LEONORA SOUTH Newly Identified Target Area

Jessop's Creek Target Area

- High-priority greenfields exploration target to the south of the Niagara Gold Trend¹.
- GSWA geological interpretation recorded most of the tenement as a granite, however, recent interpretations point towards presence of greenstones.
- Nov 2025 soil sampling defined significant **1.3km long gold anomaly** (>10 ppb Au), confirming potential of the structure with peak result of **22.5 ppb Au**¹.
- Ultrafine+ methodology used to target deeper areas of weathering, confirming historical anomalies and identifying new target areas.
- 4,000m AC drill program to commence Nov 2025 at Jessop Creek.
- First significant, systematic exploration program on the area designed to test historic workings and validate previous intercepts.



¹ ASX Announcement 1 December 2025 "High-Priority Targets Identified at Jessop's Creek and Whistler; Strategic Expansion to Leonora South Footprint"

LEONORA GOLD PROJECT



Mining Partnerships



LEONORA SOUTH Fast-track Production Pathway



Strategic LOI with Mineral Mining Services¹

- Low capital pathway to commercialise Orion and Sapphire resources at a time of record gold prices.
- Allows GoldArc to focus efforts on the larger, high-priority exploration opportunities across its portfolio.
- **Key Terms:** Smart, Low-Capital Structure
 - **Development JV:** MMS funds 100% of development costs.
 - **Cost recovery:** MMS recovers development costs from initial project cash flows.
 - **Profit Share:** 50:50 share of all subsequent project profits (after cost recovery).
- **Next Steps**
 - Finalise definitive agreements.
 - Commence drilling at Orion and Sapphire to increase resource confidence.

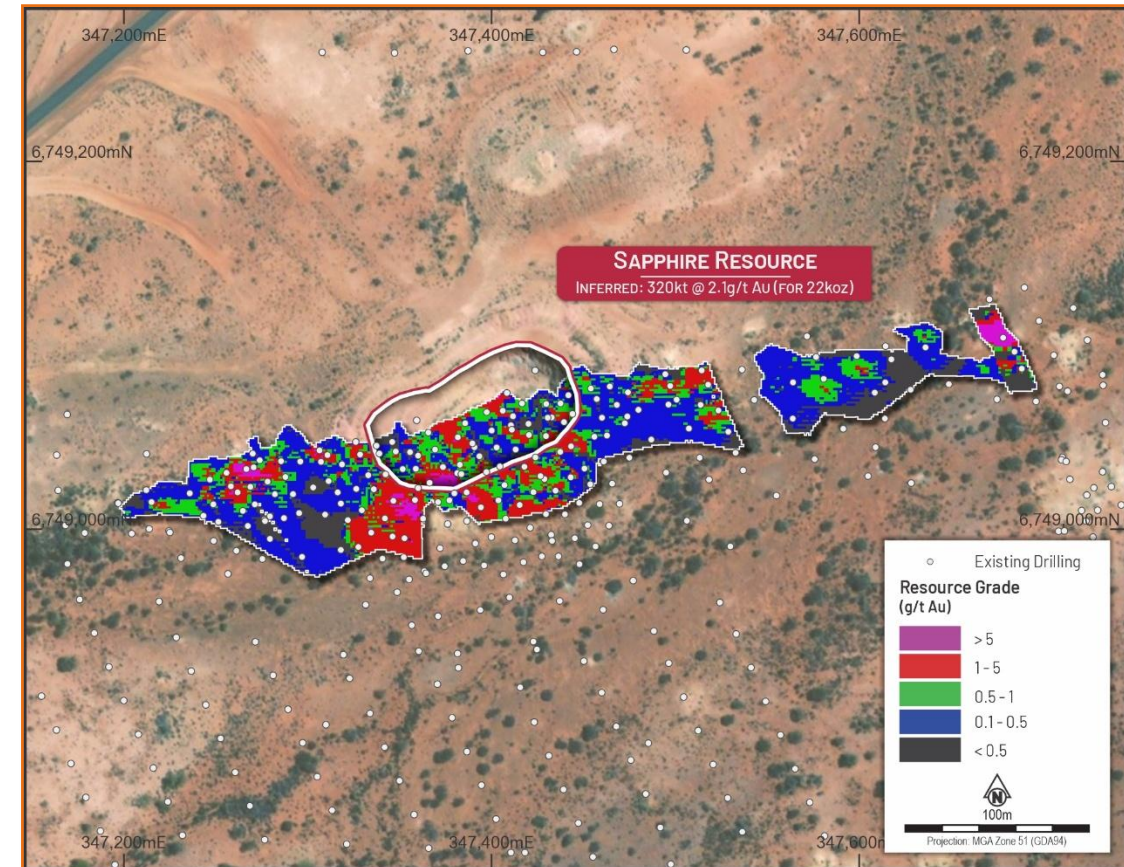
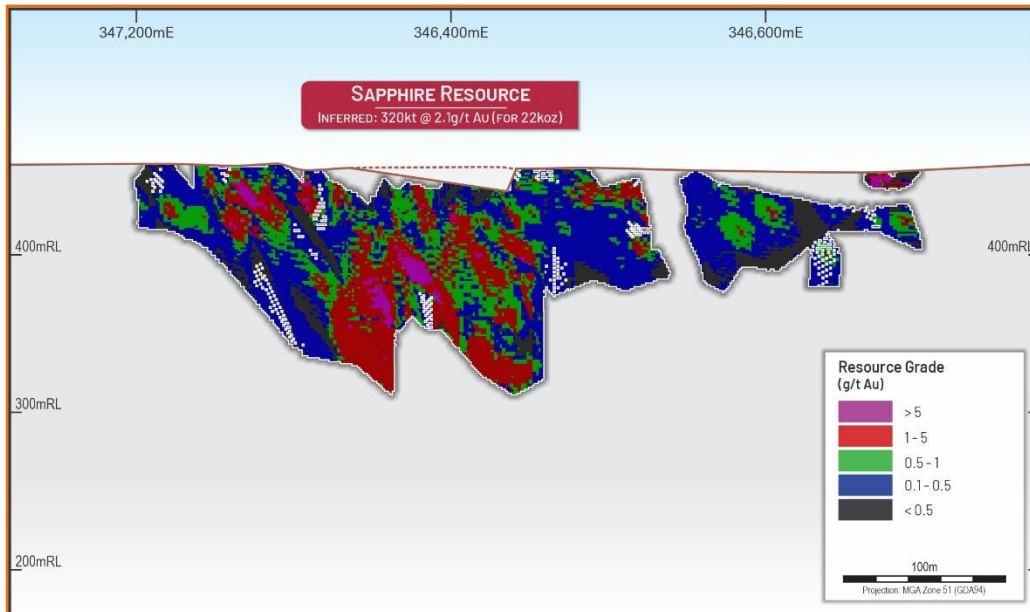


1. ASX announcement 28th October 2025 "Strategic Letter of Intent Signed with MMS to Unlock Value at Leonora South"

LEONORA SOUTH Near-Term Production Potential

Sapphire Resource

- Hosts a JORC 2012 Mineral Resource of **21,605oz @ 2.1g/t Au¹** (Inferred)
- Significant intercepts include²:
 - **6m @ 166g/t Au from 135m inc 4m @ 248.8g/t Au** (Sapphire)
 - **5m @ 21.5g/t Au from 19m** (Sapphire)

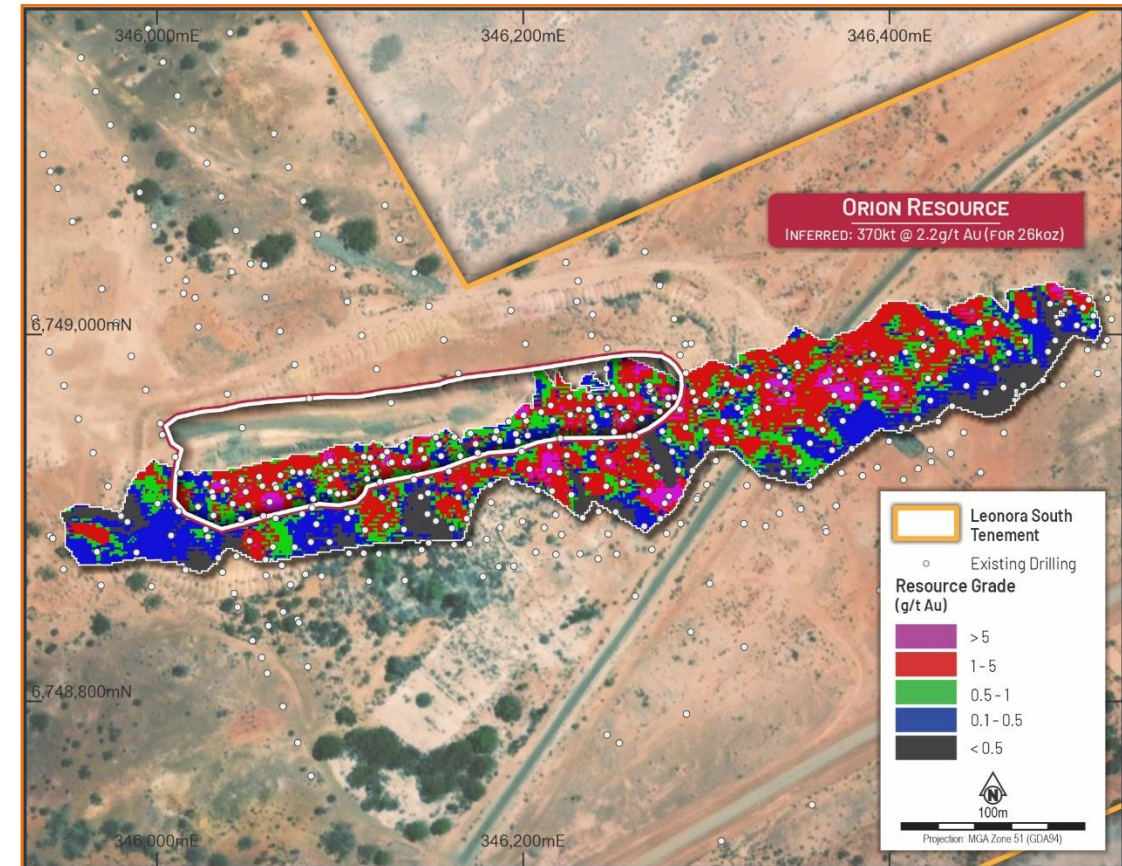
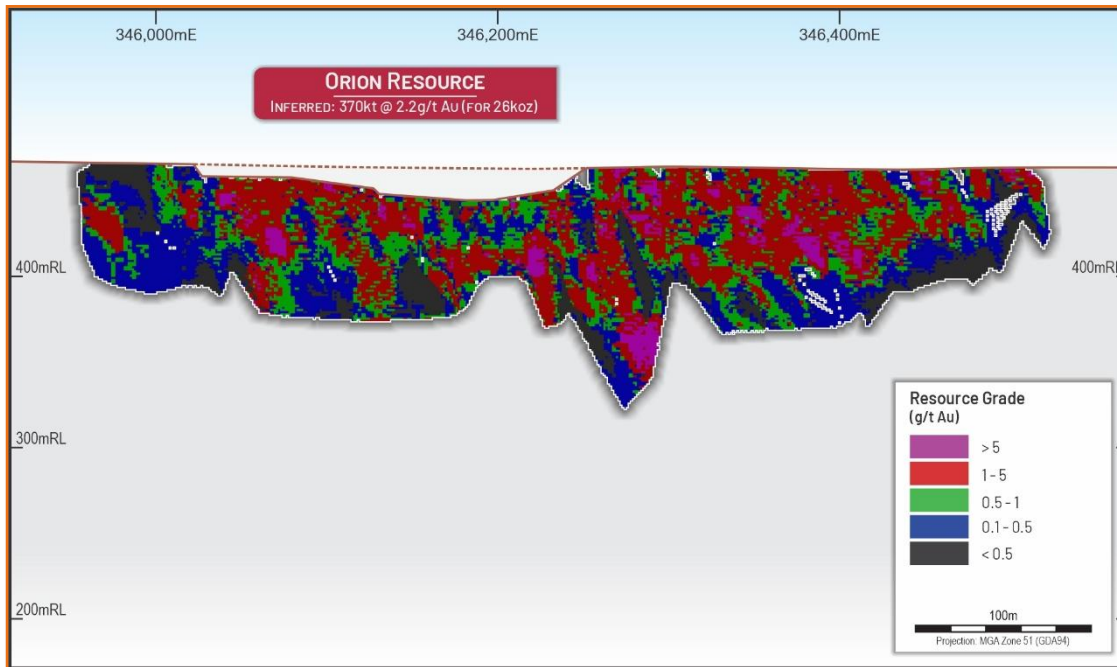


1. See Slide 30 for JORC Resource Table
2. ASX announcement 23rd October 2024 "Drilling Confirms High Grade Gold at Kookynie East"

LEONORA SOUTH Near-Term Production Potential

Orion Resource

- Hosts a JORC 2012 Mineral Resource of **26,409oz @ 2.2g/t Au¹** (Inferred)
- Significant intercepts include²:
 - **7m @ 20.5g/t Au from 10m** (Orion)
 - **4m @ 46.4g/t Au from 3m** (Orion)



1. See Slide 30 for JORC Resource Table

2. ASX announcement 23rd October 2024 "Drilling Confirms High Grade Gold at Kookynie East"

Strategic Partnership with BML Ventures²

- Definitive **Profit Share Mining Agreement** to develop and mine the Mt Stirling and Stirling Well Resources (combines 152koz Au JORC Resource¹).
- BML will act as Mine Operator, responsible for all mining activities and approvals, incl. 100% of CAPEX & OPEX.
- Includes **A\$2.5M Profit Cash Advance Facility**, providing non-dilutive capital for GA8's broader exploration strategy and general working capital³.
- GA8 will retain 50% share of Net Profit from the PSMA (after costs are recovered by BML).
- Leverages BML's expertise and owner/operator model, and significantly de-risks GA8's pathway to cashflow.



1. See Slide 30 for JORC Resource Table

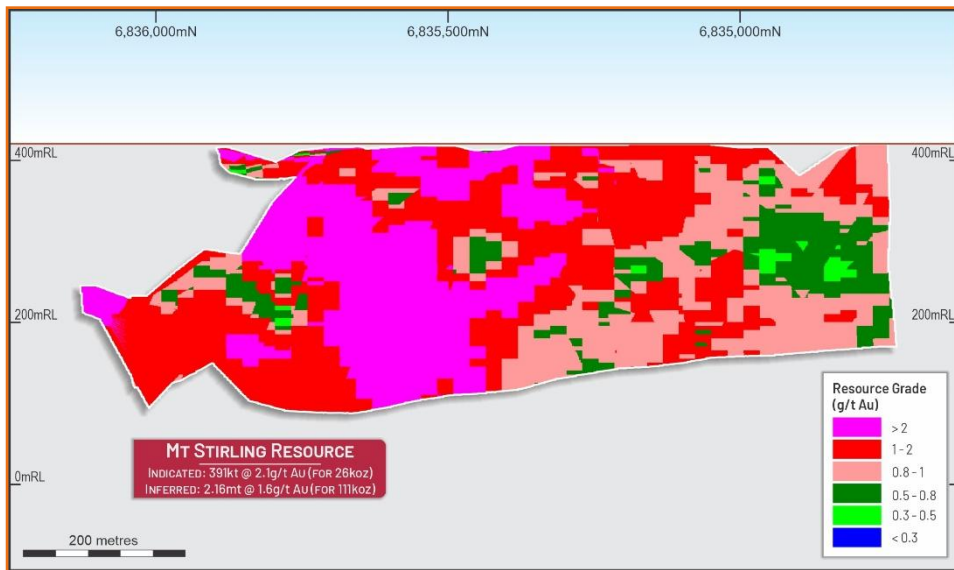
2. ASX announcement 8th December 2025 "GoldArc Accelerates Mt Stirling Development"

3. Subject to the repayment waterfall and recourse provisions of the Facility, repayment is limited to GoldArc's 50% share of Net Profit actually received from the MSP Profit Sharing Mining Agreement.

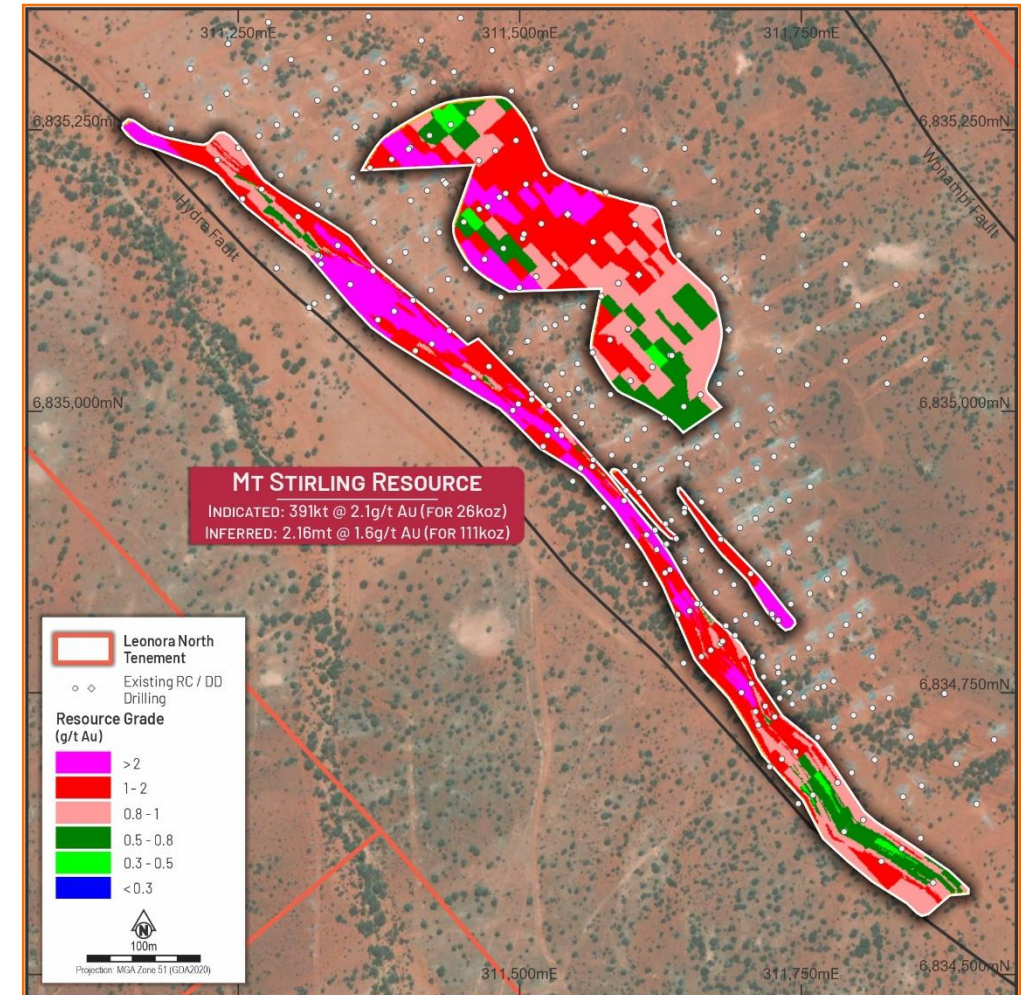
LEONORA NORTH Shallow, Existing Resource

Mt Stirling Resource

- Hosts a JORC 2012 Mineral Resource of¹:
 - **26,000oz @ 2.1g/t Au** (Indicated).
 - **111,000oz @ 1.6g/t Au** (Inferred)
- Remains open at depth and to the north with high-grade shoots identified.



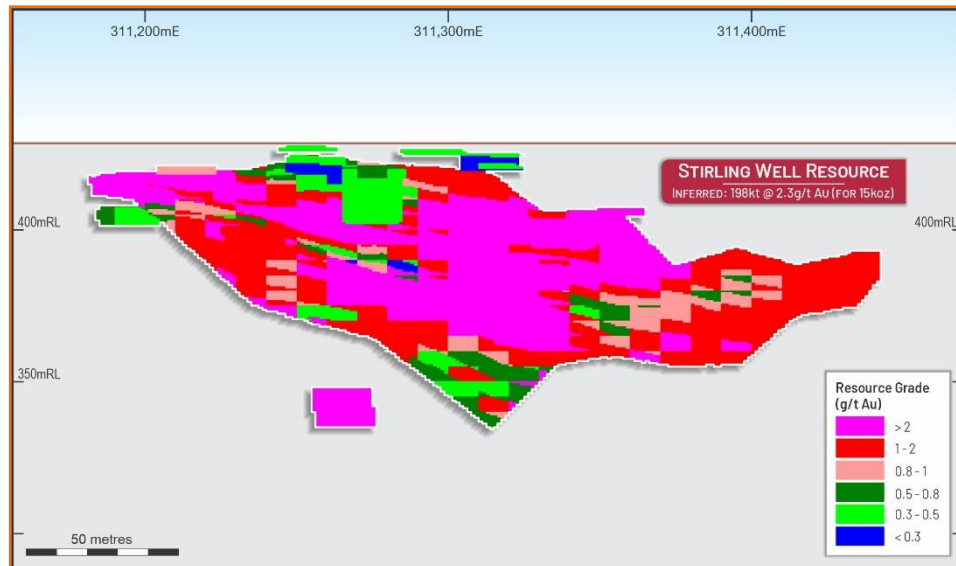
1. See Slide 30 for JORC Resource Table



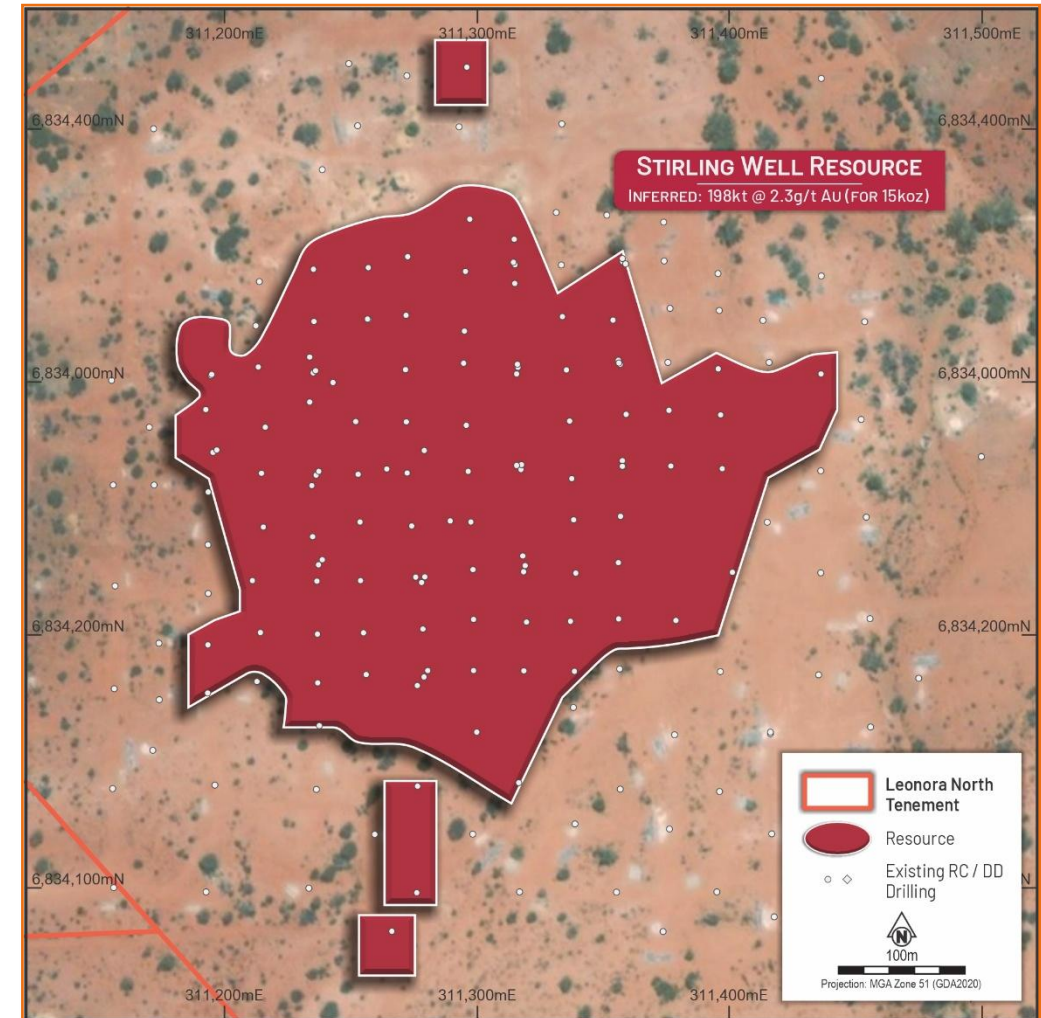
ASX announcement 27 October 2025 "Multiple New, Untested Gold Targets Defined at Leonora North Project"

Stirling Well Resource

- Hosts a JORC 2012 Mineral Resource of **15,000oz @ 2.3g/t Au** (Inferred)¹.
- Reinterpretation of the Stirling Well resource has highlighted areas with potential for additional, untested mineralisation.
- Deeper drilling is planned to test these extensions, with the aim of adding significant ounces to the current mineral resource.

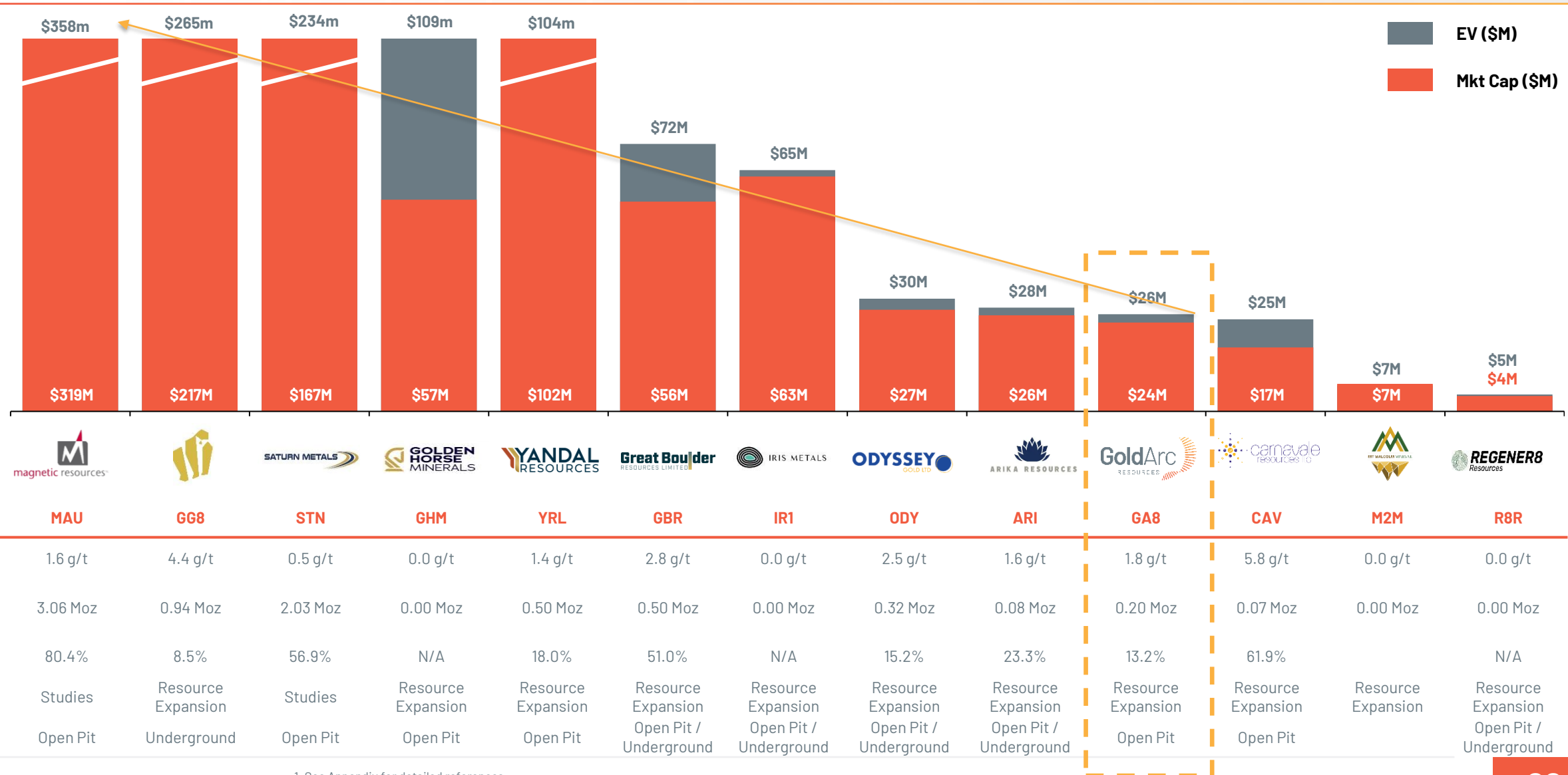


1. See Slide 30 for JORC Resource Table

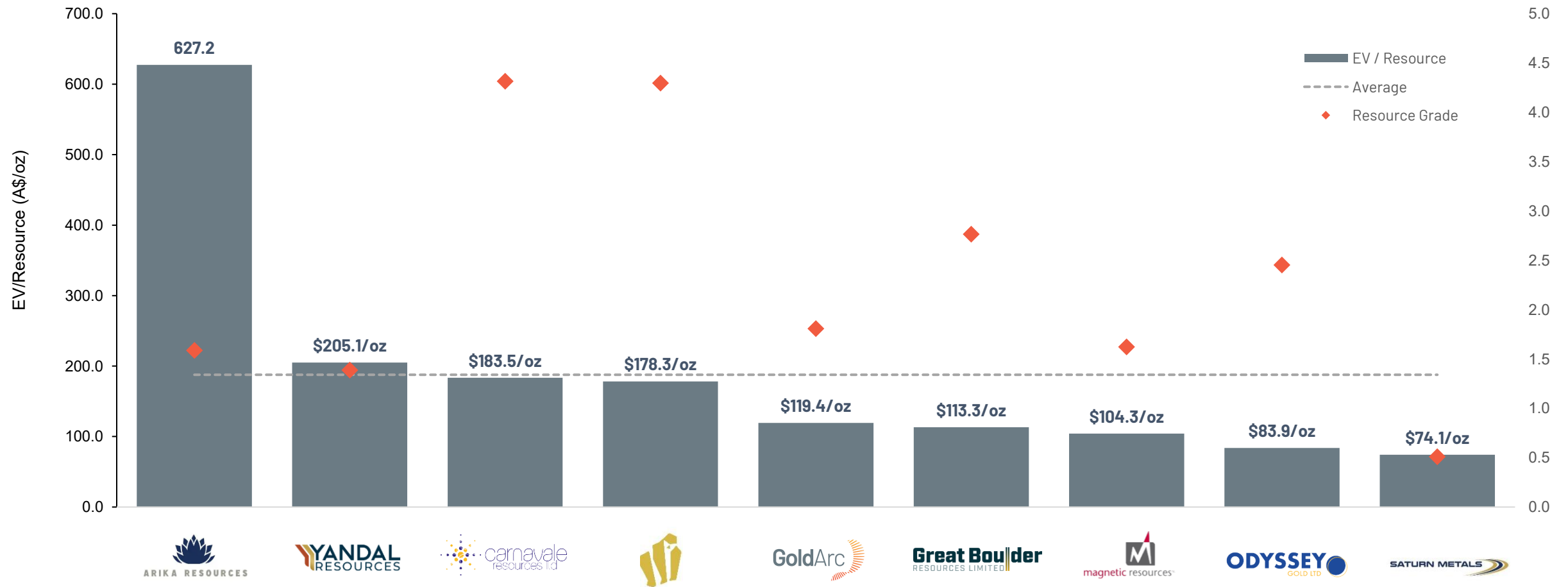


ASX announcement 27 October 2025 "Multiple New, Untested Gold Targets Defined at Leonora North Project"

ATTRACTIVE ENTRY POINT WITH UPSIDE TO DISCOVERY¹



ASX WA GOLD EXPLORERS PEER COMPARISON¹





Strategic Location

Positioned in the Leonora Goldfields with high-grade mineralisation trends, proximal to major producers and operating mills.



Dual Value

Existing JORC Resources provide near-term production optionality via the MMS Mining Partnership, balancing risk with discovery upside.



Discovery Pipeline

Two large, strategic land packages with a strong pipeline of high-priority, underexplored targets and known high-grade potential.



Proven Team

Led by an experienced Board and technical team with a track record of major gold discoveries in WA – inc Gold Road's Gruyere deposit.



Upside Leverage

Newly refreshed capital structure provides a low-cost entry and significant leverage to new discovery success and near-term production.





Aggressive Strategy


Executing an aggressive exploration strategy targeting major new gold discoveries, ensuring a consistent, meaningful news flow.

ASX:GA8

General Enquiries

 +61 8 9420 8205

 104 Colin Street, West Perth
Western Australia 6005

 info@goldarcres.com.au



JORC Resource Table

GoldArc's Gold Projects	Category	Tonnes	Gold Grade (g/t Au)	Gold Ounces
Leonora North – Viserion	Indicated	391,000	2.1	26,000
	Inferred	2,158,000	1.6	111,000
Leonora North – Stirling Well	Inferred	198,000	2.3	15,000
Leonora South – Niagara – Orion	Inferred	370,000	2.2	26,409
Leonora South – Niagara – Sapphire	Inferred	320,000	2.1	21,605
Total		3,437,000	1.82	200,064

Appendix 1 – Peer Comparison

Company	Code	Mineral Resources					Source: Mineral Resources and Ore Reserves – ASX Announcements
		Total Resource (Moz)	Measured (Moz)	Indicated (Moz)	Inferred (Moz)	Grade (g/t)	
Arika Resources	ASX:AKI	0.08		0.02	0.06	1.6	31 January 2025 “Quarterly Activities/Appendix 5B Cash Flow Report”
Carnavale Resources	ASX:CAV	0.07		0.05	0.04	5.8	28 May 2024 “Investor Presentation”
Gorilla Gold Mines	ASX:GG8	0.1		0.08	0.87	4.5	29 January 2025 “Quarterly Activities / Appendix 5B Cash Flow Report”
Saturn Metals	ASX:STN	2.03	0.085	1.07	0.87	0.5	22 January 2025 “Strong Drill Results Support Development Potential At Apollo Hill Gold Project
Great Boulder Resources	ASX:GBR	0.5		0.34	0.33	2.8	30 January 2025 “Quarterly Activities/Appendix 5B Cash Flow Report”
Odyssey Gold	ASX:ODY	0.3		0.06	0.35	2.5	6 May 2025 “Company Presentation”
Yandal Resources	ASX:YRL	0.07		0.09	0.38	1.4	6 May 2025 “Company Presentation”
Magnetic Resources	ASX:MAU	1.93		1.72	0.61	1.8	23 June 2025 “Investor Presentation”

BASIS OF PEER GROUP SELECTIONS

- Share price, date of shares, market capitalisation and enterprise value calculated on closing price on ASX on 24 September 2025
- Gold-dominant or gold equivalent commodity project
- Value is attributed largely to a single gold project
- Project must be pre-feasibility study phase, and may or may not have a JORC Mineral Resource Estimate
- Project location preferred in Western Australia
- Rounding errors may occur due to use of different decimal places