



**Ausmon Resources Limited**  
ABN 88 134 358 964  
Suite 1312, 87-89 Liverpool Street  
Sydney NSW 2000, Australia  
PO Box 20188, World Square, NSW 2002  
T: +61 2 9264 6288  
E: [office@ausmonresources.com.au](mailto:office@ausmonresources.com.au)  
W: [www.ausmonresources.com.au](http://www.ausmonresources.com.au)



28 November 2025

ASX Market Announcements

## **PRESENTATION AT AGM ON 28 NOVEMBER 2025**

A copy of the Powerpoint presentation on current exploration is attached.

### **Authorised by:**

Boris Patkin  
Chairman

### **Contact:**

Eric Sam Yue – Executive Director/Company secretary  
Contact: 02 9264 6988  
Email: [office@ausmonresources.com.au](mailto:office@ausmonresources.com.au)



# AUSMON RESOURCES LIMITED

## AGM PRESENTATION

**Mark Derriman(Chief Technical Officer)**

28<sup>th</sup> November 2025

Authorised by: Boris Patkin – Chairman

Contact: Tel: +612 9264 6288 Email: [office@ausmonresources.com.au](mailto:office@ausmonresources.com.au)



AUSMON RESOURCES  
LIMITED

# Disclaimer

2

Certain statements contained in this presentation, including information as to the future financial or operating performance of Ausmon Resources Limited and its projects, are forward-looking statements. Such forward looking statements:

- Are necessarily based upon a number of assumptions and estimates that, while considered reasonable by Ausmon Resources Limited, are inherently subject to significant technical, business, economic, competitive, political and social uncertainties and contingencies;
- Involve known and unknown risks and uncertainties that could cause actual events or results to differ materially from estimated or anticipated events or results reflected in such forward-looking statements; and
- May include, among other things, statements regarding targets, estimates and assumptions in respect of production, prices, operating costs, results, capital expenditures, reserves and resources, and are or may be based on assumptions and estimates related to future technical, economic, market, political, social and other conditions.

Ausmon Resources Limited disclaims any intent or obligation to update publicly any forward-looking statements, whether as a result of new information, future events or otherwise.

All forward-looking statements made in this presentation are qualified by the foregoing cautionary statements. Investors are cautioned that forward-looking statements are not guarantees of future performance and accordingly investors are cautioned not to rely on forward-looking statements due to the inherent uncertainty therein.

## **Competent Person Statement**

The information in this presentation that relates to Exploration Results, Exploration Targets and Mineral Resources is based on information compiled by Mr Mark Derriman, who is the Company's Consultant Geologist and a member of The Australian Institute of Geoscientists (1566). Mr Mark Derriman has sufficient experience that is relevant to the style of mineralization and type of deposit under consideration and to the activities which he is undertaking to qualify as a Competent Person as defined in the 2012 Edition of the Australasian Code for Reporting of Exploration Results, Exploration Targets, Mineral Resources and Ore Reserves. Mr Mark Derriman consents to the inclusion in this report of matters based on his information in the form and context in which it appears.

The Company confirms that it is not aware of any new information or data that materially affects the information included in the original ASX announcements referred to in this presentation, and in the case of estimates of Mineral Resources, that all material assumptions and technical parameters underpinning the estimates in the relevant ASX announcements continue to apply and have not materially changed. The Company confirms that the form and context in which the Competent Person's findings are presented have not been materially modified from the original market announcements.

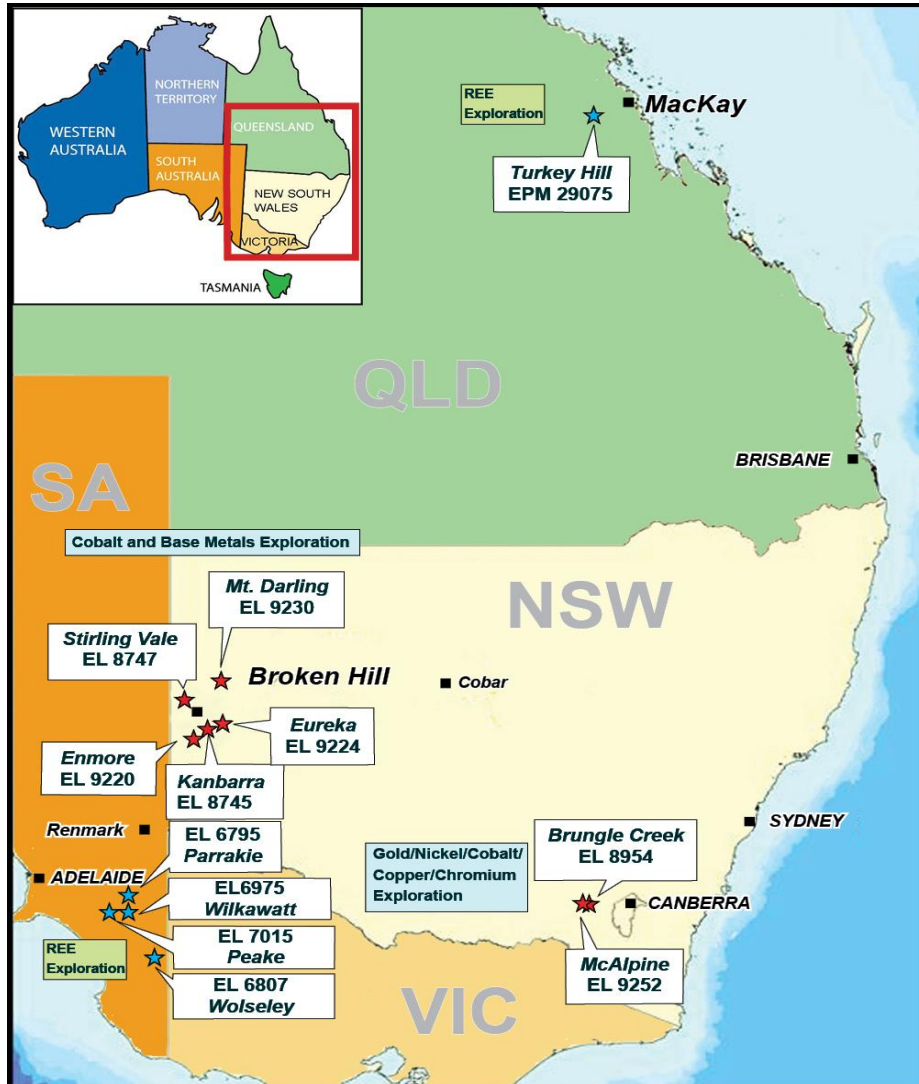
NSW : 7 Granted Tenements - Gold & Base Metals

SA : 4 Granted Tenements – REEs

QLD : 1 Granted Tenement - REEs



AUSMON RESOURCES  
LIMITED



Aircore  
Drilling at  
Parrakie SA

pXRF  
Sampling  
Turkey Hill  
QLD



# Rare Earth Elements Exploration



AUSMON RESOURCES  
LIMITED

## Limestone Coast - South Australia

- **2025** Completed two phases of Aircore drilling at Parrakie, Peake and Wilkawatt.
  - **Phase 1 in May:** 57 holes for 1,001m, TREO to 1m @ 2,292ppm from 11m -12m and 3m @ 766.5ppm from 12m -15m (incl 1m @ 1,088ppm from 12m -13m *(ASX release 20<sup>th</sup> May 2024)*)
  - **Phase 2 in September: (Jabuk)** 21 holes for 382m elevated TREO to 1m @ 1,452ppm from 12m -13m and 3m @ 485.2ppm from 17m—20m (incl 1m @ 658.55ppm from 18m-19m). *(ASX Release 20<sup>th</sup> November2025)*
- **2026** planned grid based aircore drilling at 3 prospects 122 km<sup>2</sup>: first at **Jabuk** (LC03) then at **Beelitz**(LC01) and **Geranium** (LC02). Jabuk grid drilling 250m x 400m grid for 100 drillholes.
- Total 4 tenements covering 2,529 km<sup>2</sup>.

## Drummond Basin – Queensland

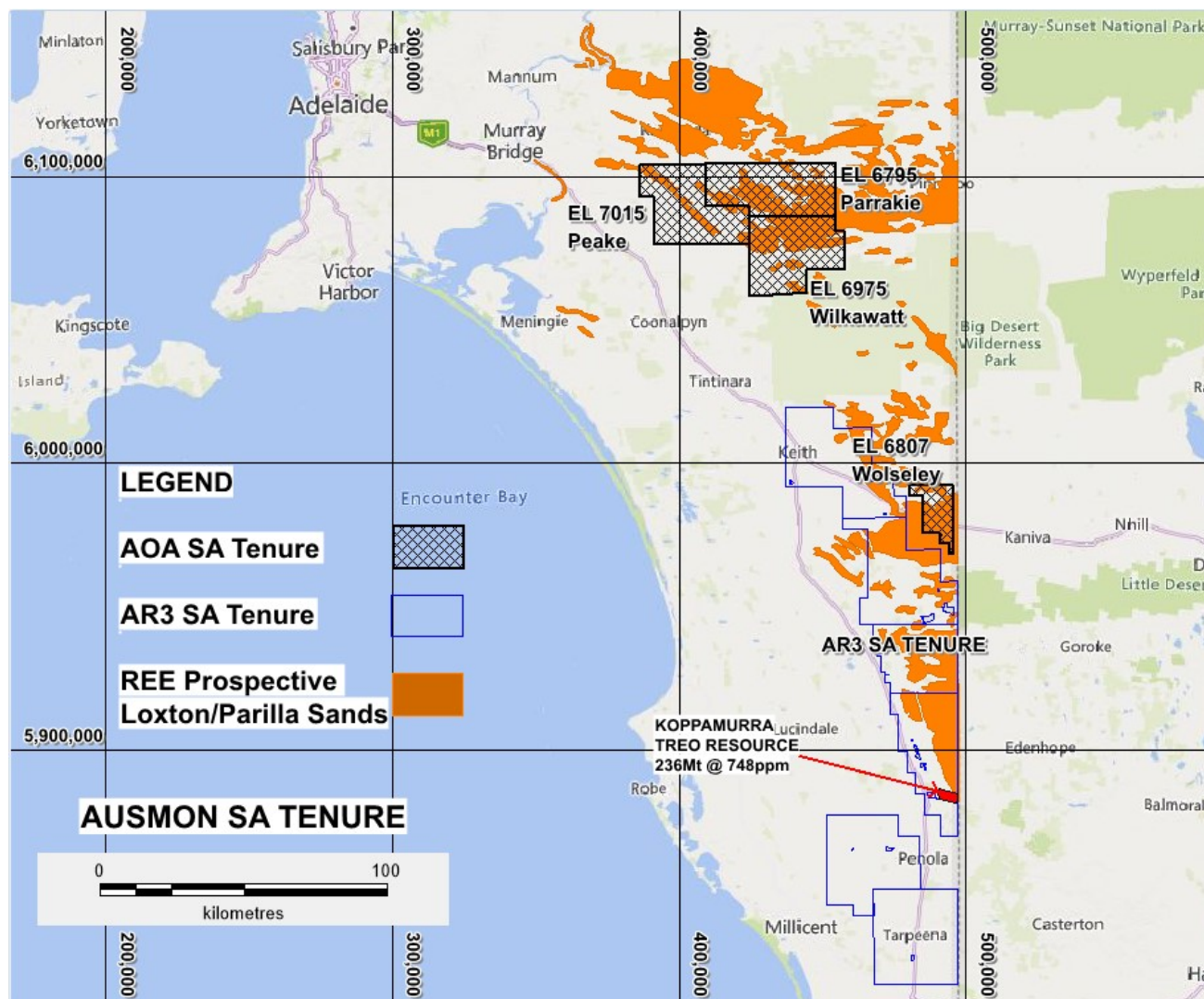
- New tenement Turkey Hill granted for 5 years to 2029.
- Data compilation followed by geological and regolith mapping.
- Phase surficial geochemical sampling completed, hampered by wet weather and soils.





AUSMON RESOURCES  
LIMITED

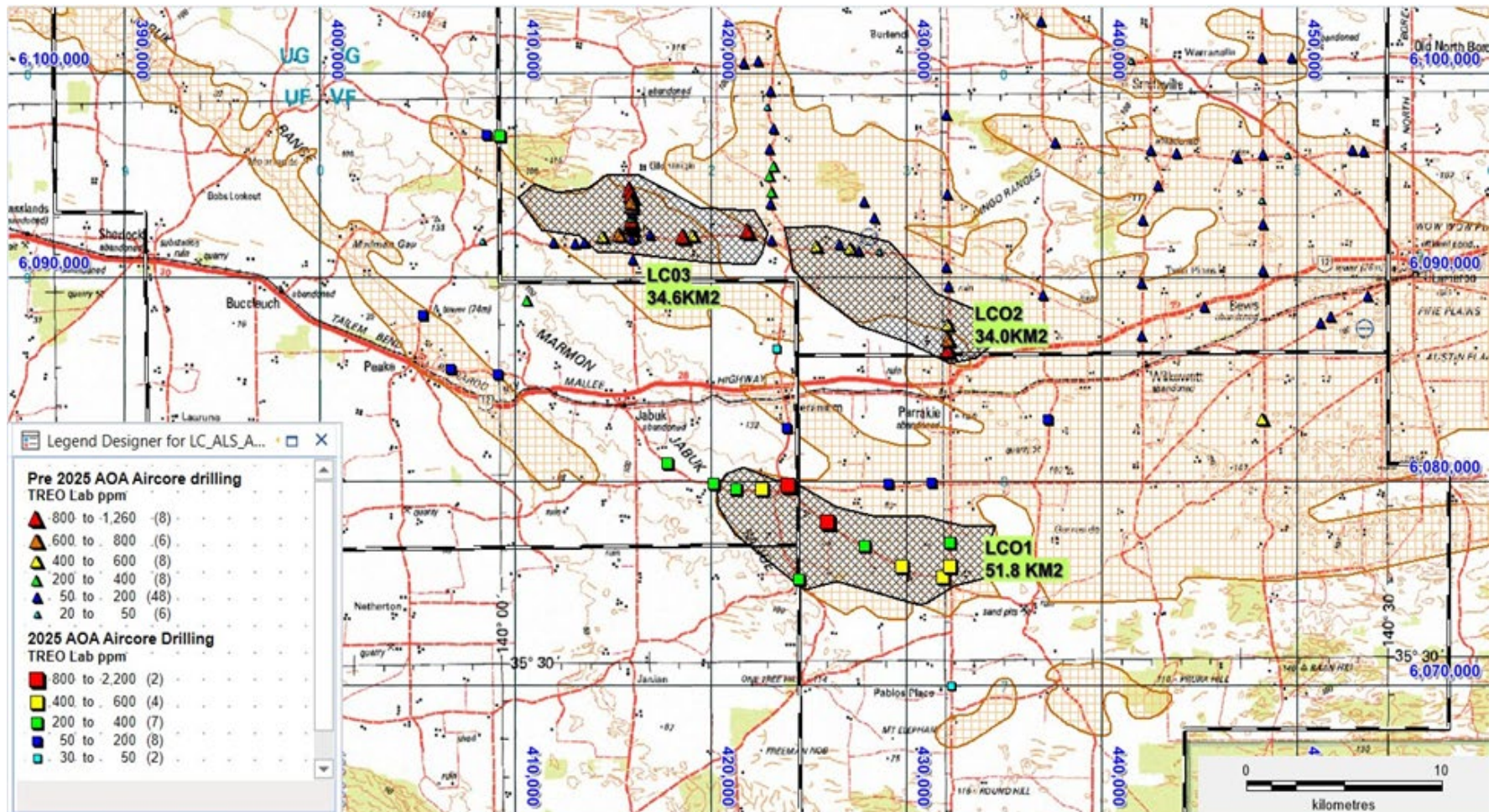
# SA Limestone Coast Projects



# SA 2025 drilling – 3 REEs prospects defined

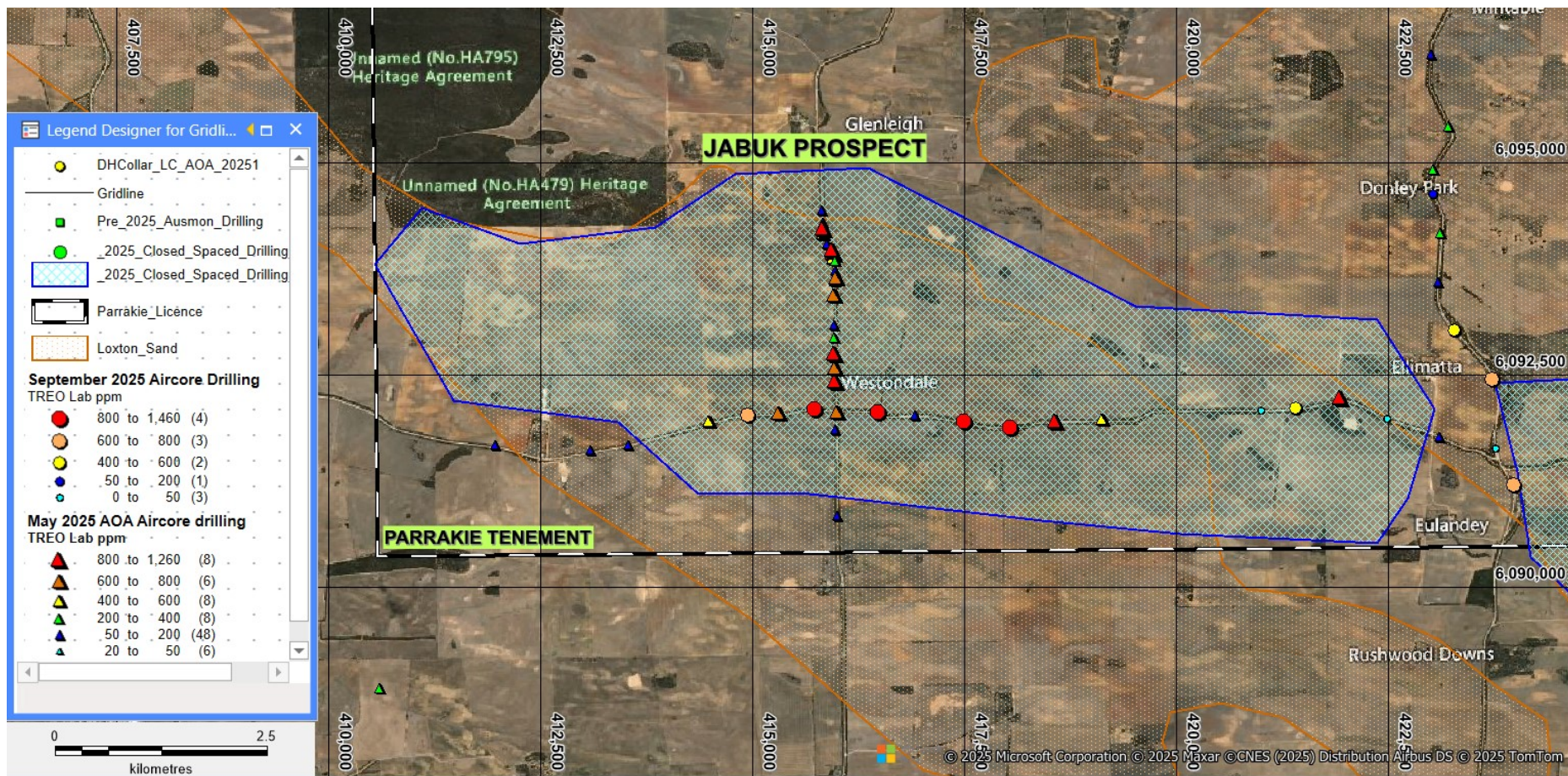


AUSMON RESOURCES  
LIMITED



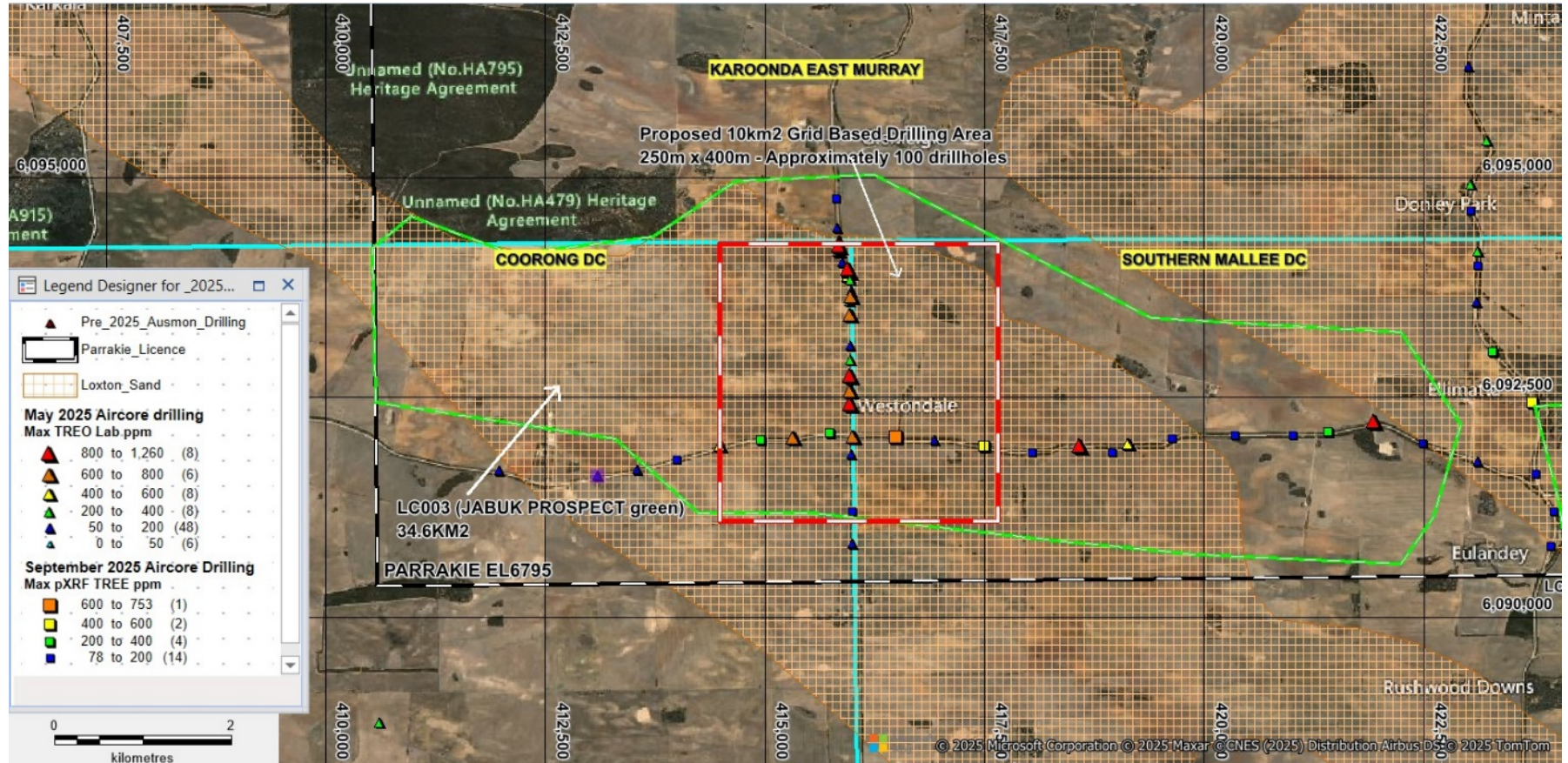


# SA Parrakie 2025 Drilling – Jabuk(LC03)





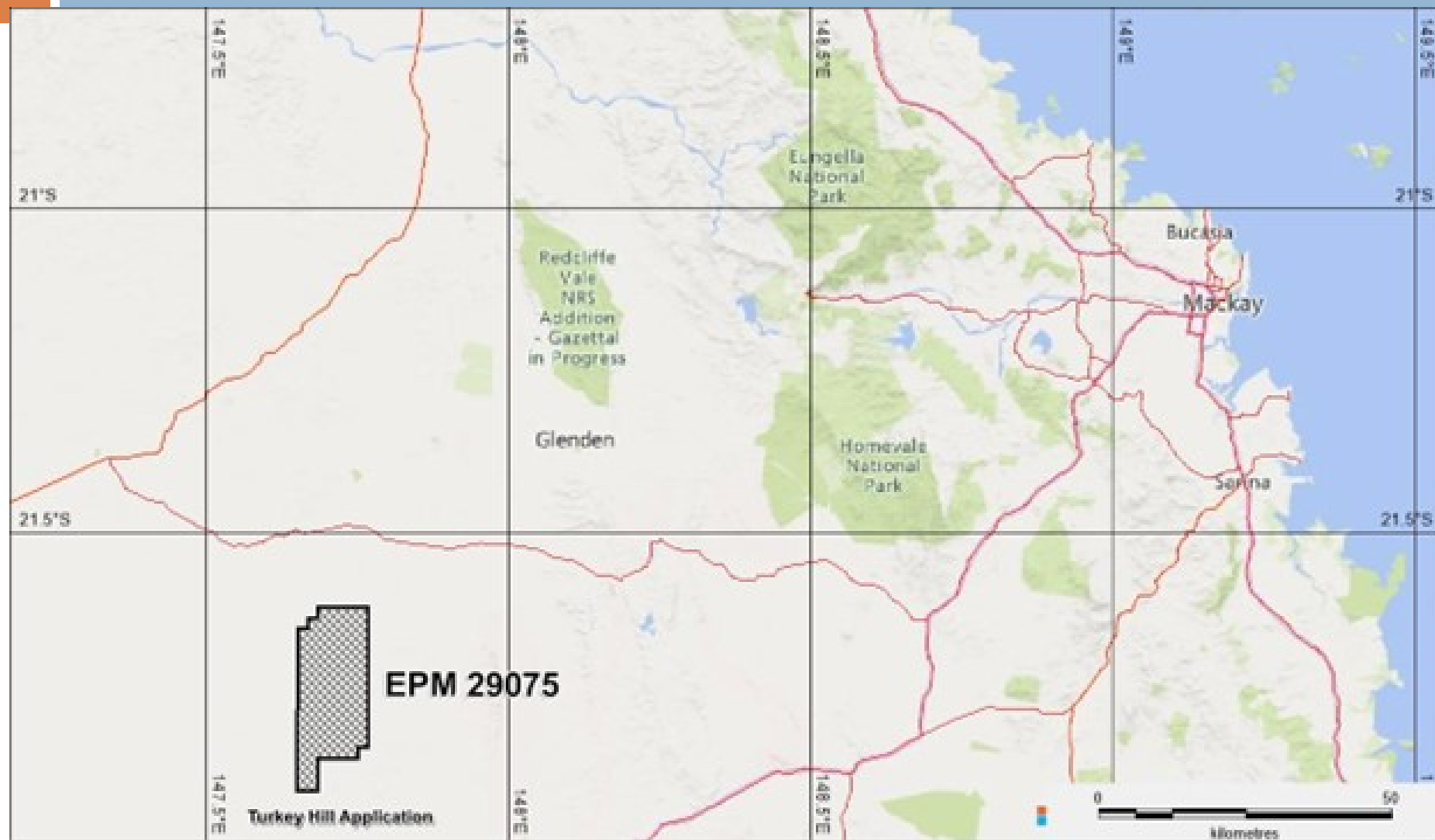
# SA Parrakie 2026 Planned Grid Based Drilling





AUSMON RESOURCES  
LIMITED

# QLD Turkey Hill Tenement

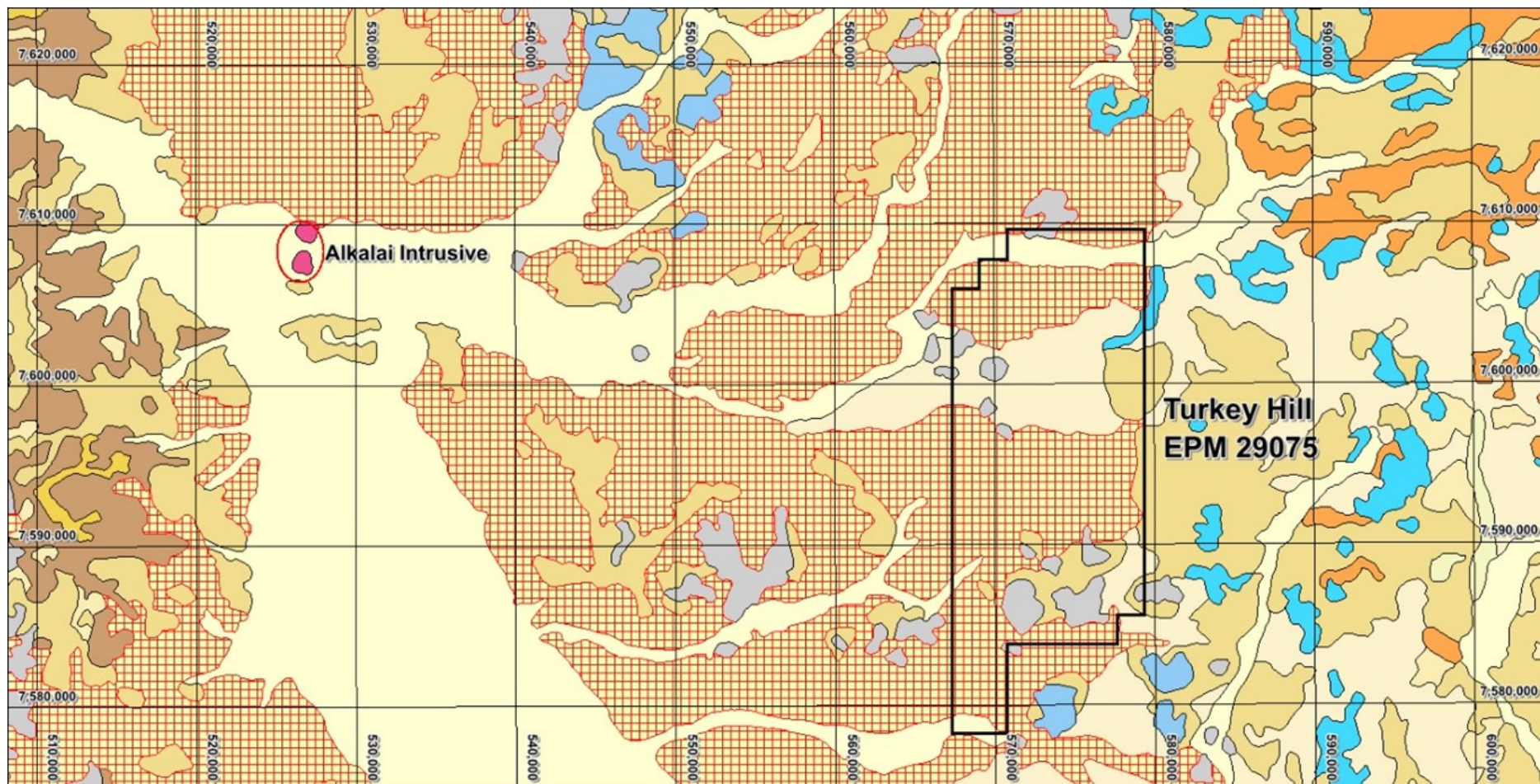






AUSMON RESOURCES  
LIMITED

# QLD Turkey Hill - Geology

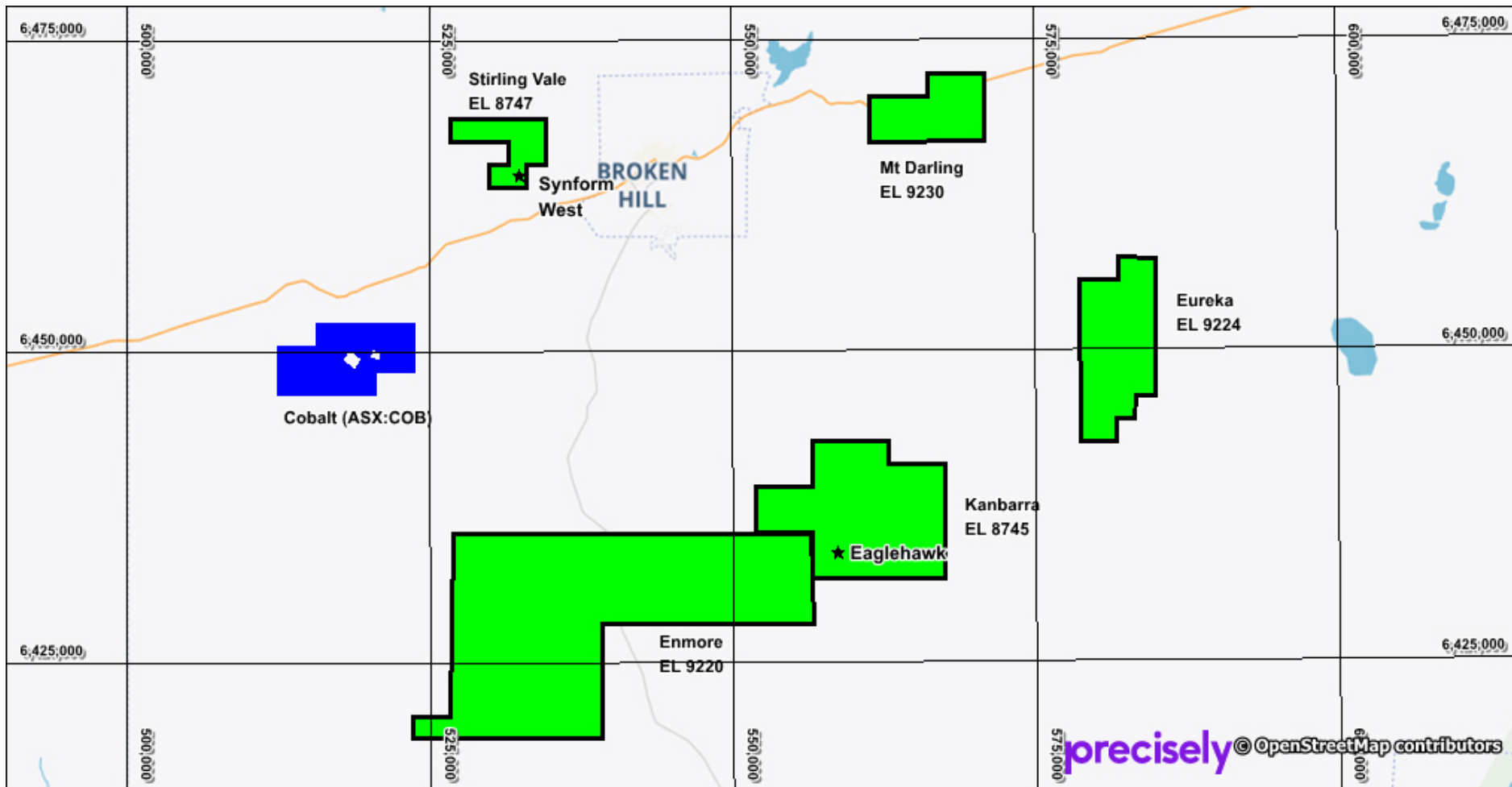




# Gold and Base Metals Exploration Broken Hill Tenements NSW



AUSMON RESOURCES  
LIMITED



# Gold and Base Metals Exploration



AUSMON RESOURCES  
LIMITED

## **Enmore/Eureka/Mt Darling – Broken Hill - New South Wales**

- Two RC drillholes program at Enmore for the East Borehole IP/Geochemistry target.
  - Due to drilling difficulties hole EBRC001 did not reach target depth of 275m. Completed at 192
  - 36m - 40m 4m @ 1,095ppm Zn, 400ppm Mn and 176ppm Pb
- Focus on Enmore. No field-based exploration at Eureka and Mt Darling.

## **Kanbarra/Stirling Vale – Broken Hill - New South Wales**

- Detailed evaluation of all exploration to date for next phase of exploration.

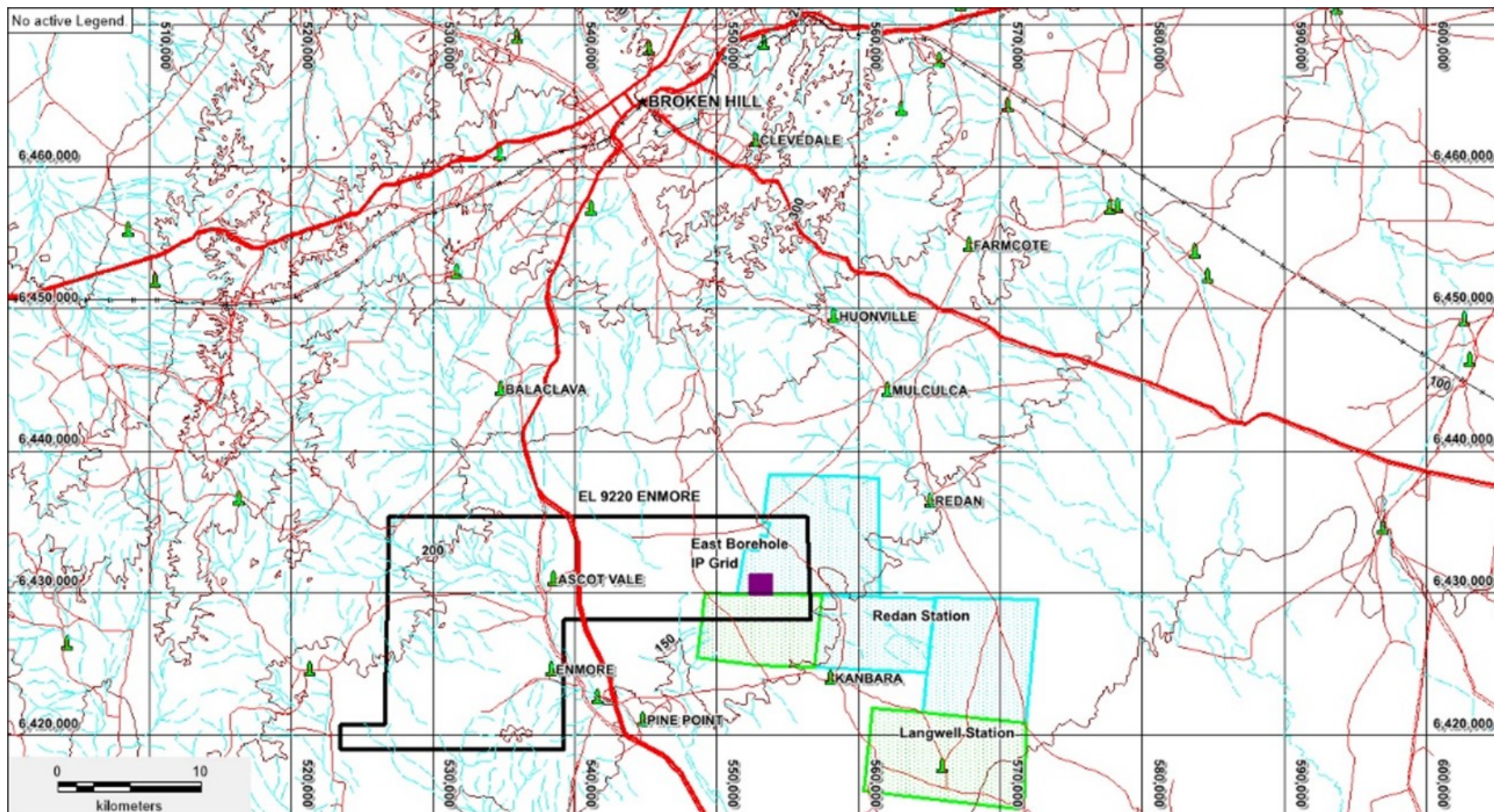
## **Brungle Creek/McAlpine – Tumut - New South Wales**

- Exploration focus shifted from Co, Cr and Cu to Au
- Two Au trends in the NW and SE of the tenements to be explored via geological mapping and surface geochemical exploration.
- No field-based exploration in 2025 as strategy going forward being developed.

# EL 9220 Enmore IP Grid and RC drilling



AUSMON RESOURCES  
LIMITED

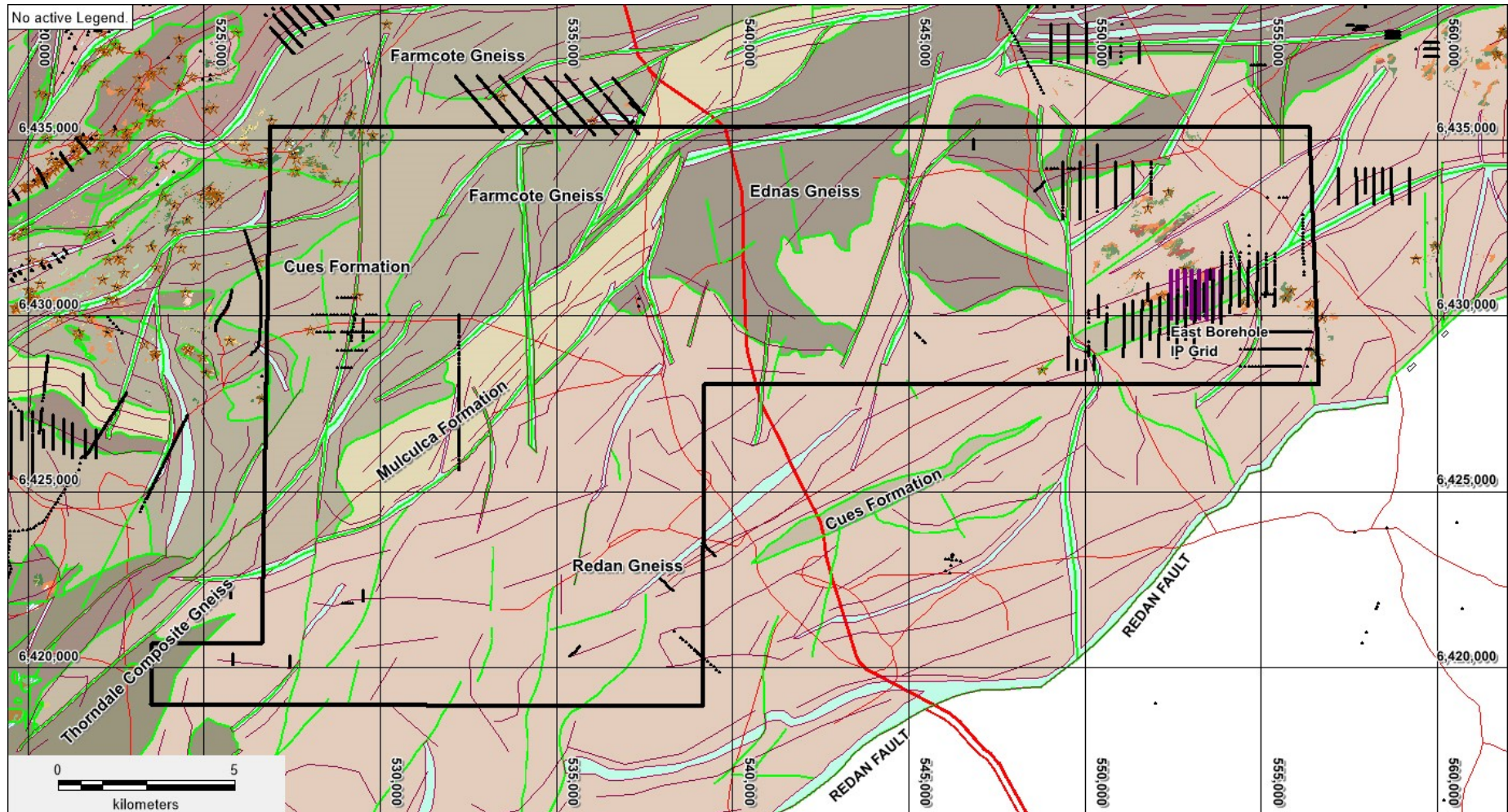




# EL 9220 Enmore Interpreted Geology



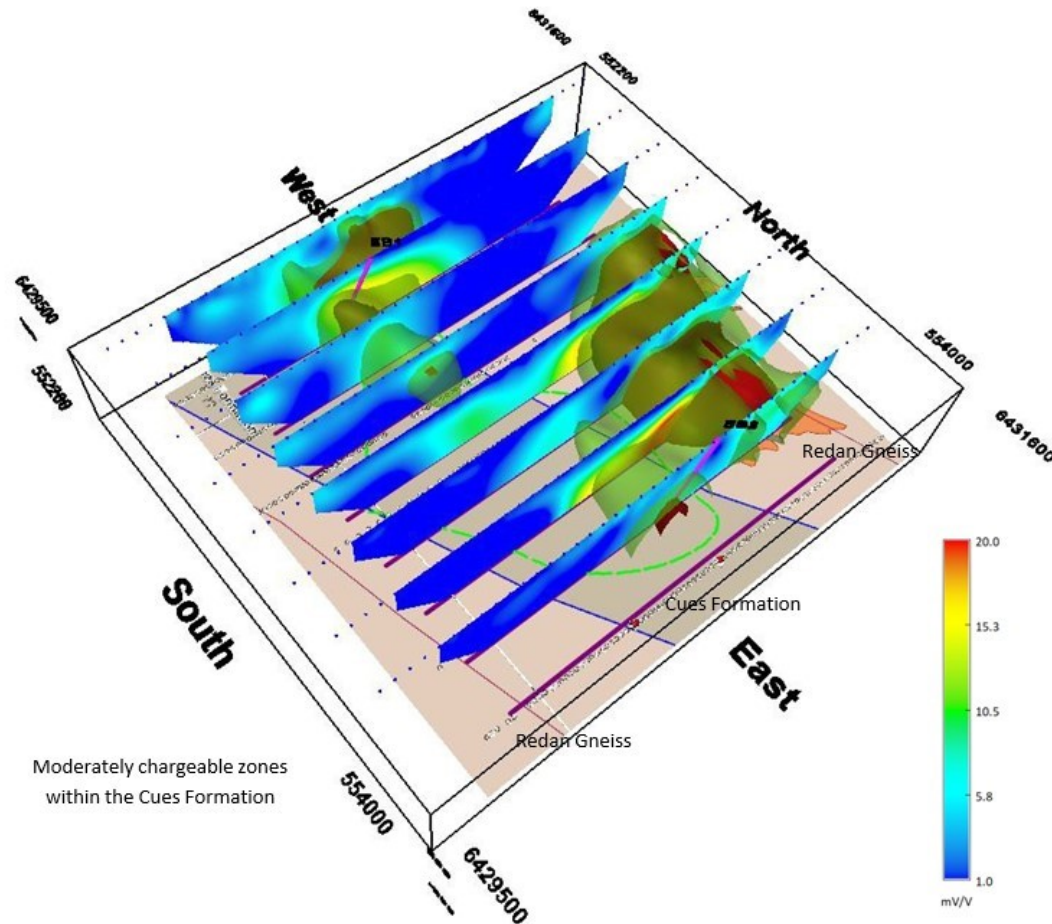
AUSMON RESOURCES  
LIMITED



# EL 9220 Enmore 3D IP Model



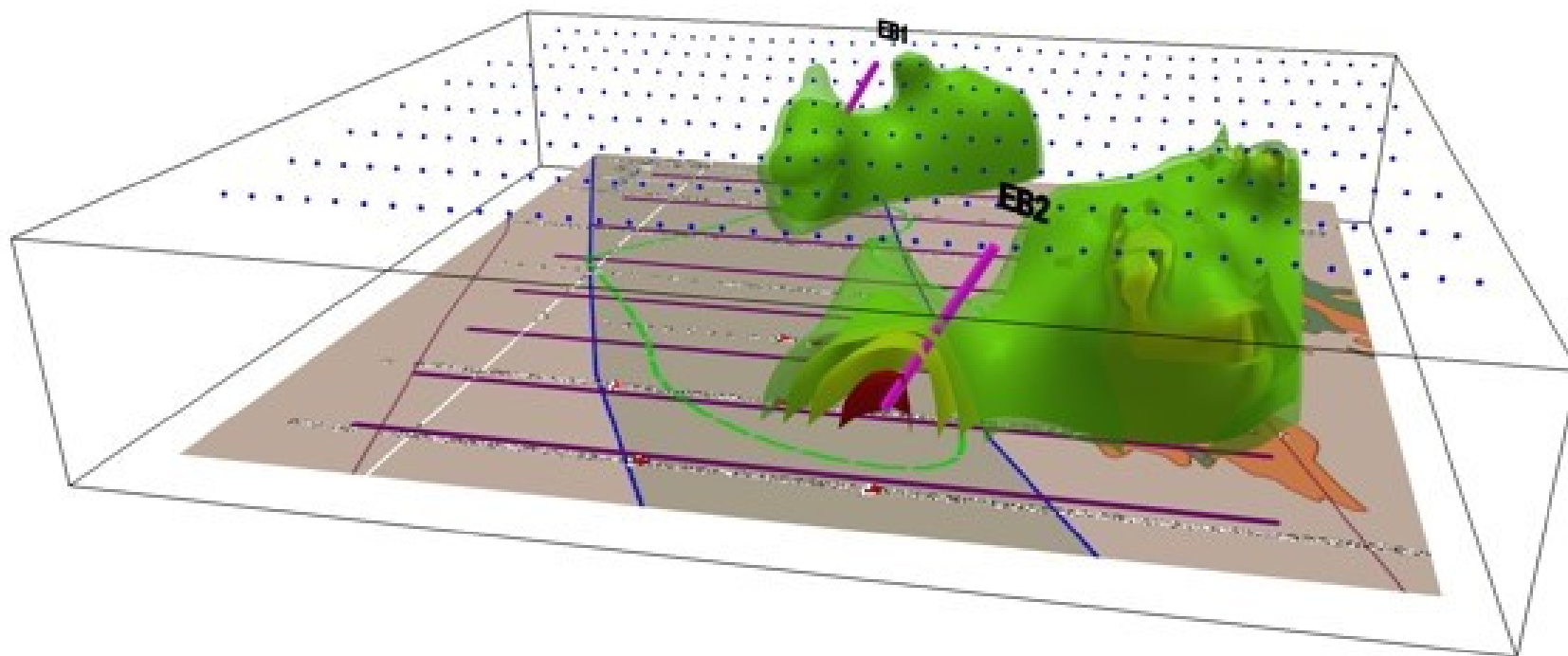
AUSMON RESOURCES  
LIMITED



# EL 9220 Enmore 3D IP Model



AUSMON RESOURCES  
LIMITED

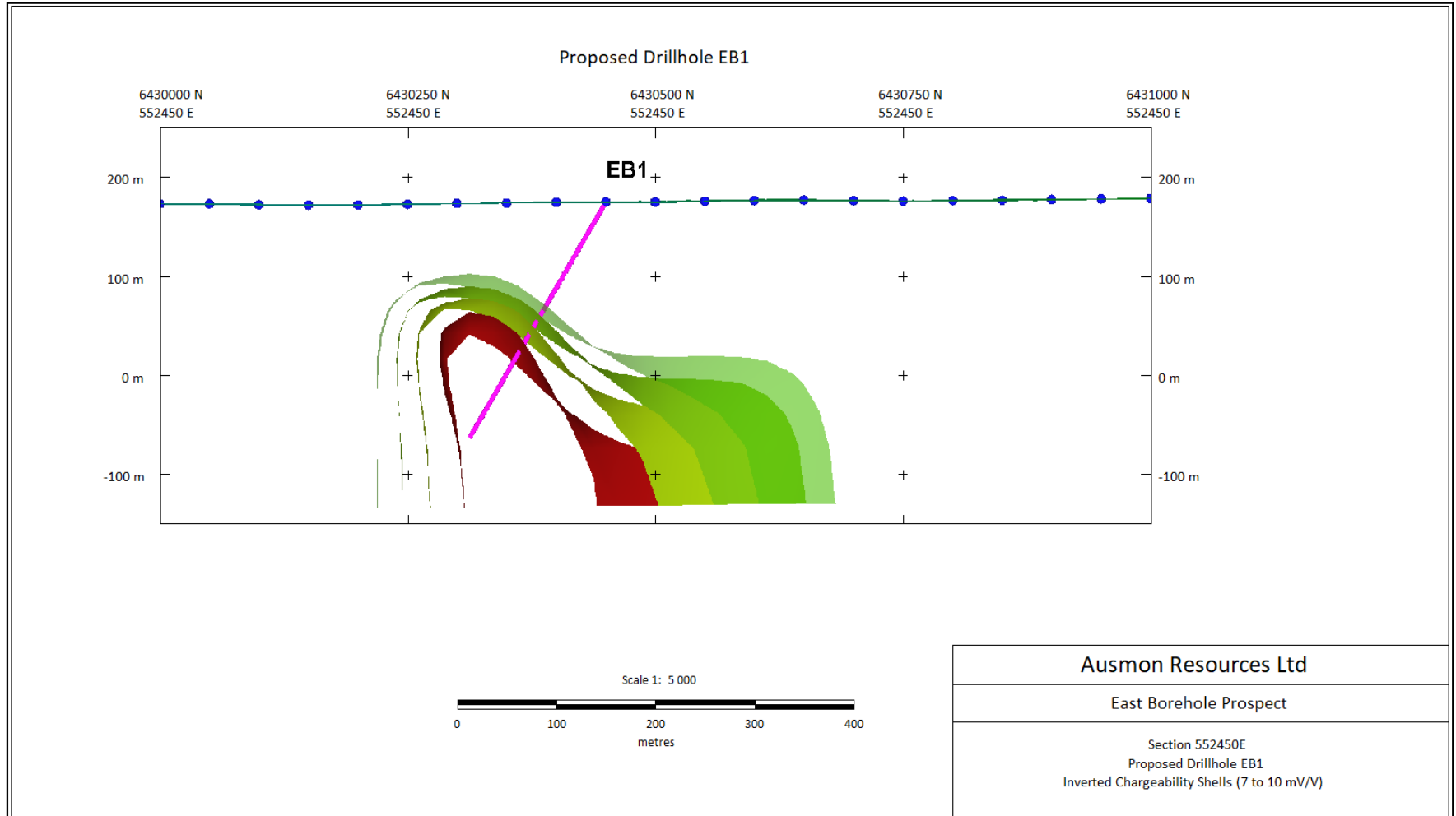




# EL 9220 Enmore 3D IP Model Cross Section



AUSMON RESOURCES  
LIMITED



# EL 9220 Enmore RC Drill Site EBRC001



AUSMON RESOURCES  
LIMITED

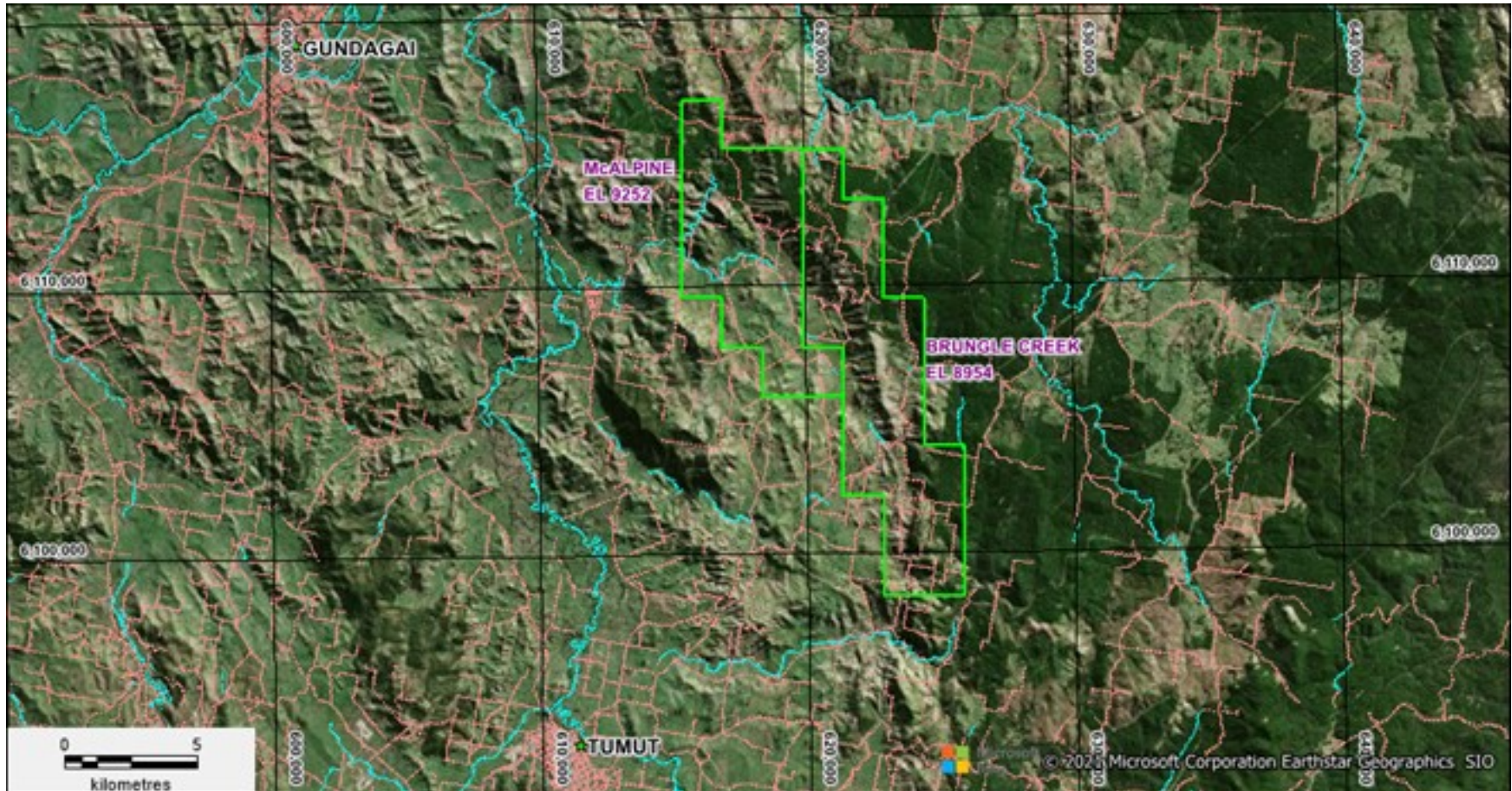




# Tumut Tenements NSW



AUSMON RESOURCES  
LIMITED







AUSMON RESOURCES  
LIMITED

# Tumut Gold Exploration Targets - NSW

