

Set for growth

Important Information



Disclaimer

This information contained in this presentation is issued by Meeka Metals Limited ("Meeka" or the "Company"). The information contained herein is confidential and proprietary to the Company and is provided to recipients on the terms and conditions set out in this disclaimer. The document, in whole or in part, is not to be distributed, copied or reproduced, in any form, without the prior written consent of the Directors of the Company. The document does not purport to cover all relevant information about the Company or its business. It does not intend to be a complete or accurate statement of material information. Although the Company has used care and diligence in its preparation, the presentation is provided on the basis that no representation or warranty, expressed or implied, is made by the Company or any of its associates or advisers as to the accuracy or completeness of the information. None of the information contained in this presentation or any other written or oral communication transmitted or made available to the recipient or any of its associates or advisers is, or shall be relied upon as, a promise or representation, whether as to the past or future, and no liability will attach to such information to the Company, its associates or advisers.

The Company and its directors, employees, agents and consultants shall have no liability including to any person by reason of negligence or negligent misstatement for statements, opinions, information or matters (express or implied) arising out of, contained in, or derived from or for any omissions from this presentation, except where liability under statute cannot be excluded.

Whilst the directors are confident in the ability of the Company to achieve its objectives, the proposed activities and the industry in which it operates are regarded as high-risk and therefore should be regarded as speculative. Potential shareholders should be aware of the risks involved with an investment of this nature. The value of the investment may rise or fall depending on a range of factors beyond the control of the Company, such as changes to interest rates, inflation, government policy, regulatory regimes and foreign exchange rates.

Certain statements in this report relate to the future, including forward looking statements relating to the Company's financial position, strategy and expected operating results. These forward-looking statements involve known and unknown risks, uncertainties, assumptions and other important factors that could cause the actual results, performance or achievements of the Company to be materially different from future results, performance or achievements expressed or implied by such statements. Actual events or results may differ materially from the events or results expressed or implied in any forward-looking statement and deviations are both normal and to be expected. Other than required by law, neither the Company, their officers nor any other person gives any representation, assurance or guarantee that the occurrence of the events expressed or implied in any forward-looking statements will actually occur. You are cautioned not to place undue reliance on those statements.

Not Investment Advice

This presentation does not provide investment advice or financial product advice. Each recipient of this presentation should make its own enquiries and investigations regarding all information in this presentation including, but not limited to, the assumptions, uncertainties and contingencies which may affect future operations of the Company and the impact that different future outcomes might have on the Company. Information in this presentation is not intended to be relied upon as advice to investors or potential investors and has been prepared without taking account of any person's individual investment objectives, financial situation or particular needs. Before making an investment decision, prospective investors should consider the appropriateness of the information having regard to their own investment objectives, financial situation and needs and seek legal, accounting and taxation advice appropriate to their jurisdiction. The Company is not licensed to provide financial product advice in respect of its securities.

Competent Person's Statement

The information that relates to Exploration Results as those terms are defined in the 2012 Edition of the 'Australasian Code for Reporting of Exploration Results, Mineral Resources and Ore Reserves', is based on information reviewed by Mr James Lawrence, a Competent Person who is a member of the Australasian Institute of Mining and Metallurgy. Mr Lawrence is a full-time employee of the Company. Mr Lawrence has sufficient experience that is relevant to the style of mineralisation and type of deposit under consideration and to the activity being undertaken to qualify as a Competent Person as defined in the 2012 Edition of the 'Australasian Code for Reporting of Exploration Results, Mineral Resources and Ore Reserves'. Mr Lawrence consents to the inclusion in the report of the matters based on his information in the form and context in which it appears.

Mineral Resources

The information that relates to the Mineral Resource for Turnberry was first reported by the Company on 6 May 2024. The information that relates to the Mineral Resource for St Anne's was first reported by the Company on 17 April 2024. The information that relates to the Mineral Resource for Andy Well was first reported by the Company on 21 December 2020. The Company is not aware of any new information or data that materially affects the information included in these announcements and that all material assumptions and technical parameters underpinning the estimates continue to apply and have not materially changed. The Company confirms that the form and context in which the Competent Person's findings are presented have not been materially modified from the original announcement.

Ore Reserves, Production Targets and Forecast Financial Information

The information that relates to Ore Reserves, production targets and forecast financial information for the Murchison Gold Project was first reported by the Company on 12 December 2024. The Company is not aware of any new information or data that materially affects the information included in this announcement and that all material assumptions and technical parameters underpinning the estimates continue to apply and have not materially changed. The Company confirms that the form and context in which the Competent Person's findings are presented have not been materially modified from the original announcement.

Currency

All amounts are in Australian dollars unless stated otherwise.

Not an offer in the United States

This presentation has been prepared for publication in Australia and may not be released to US wire services or distributed in the United States. This presentation does not constitute an offer to sell, or a solicitation of an offer to buy, securities in the United States or any other jurisdiction. Any securities described in this presentation have not been, and will not be, registered under the US Securities Act of 1933 and may not be offered or sold in the United States except in transactions exempt from, or not subject to, registration under the US Securities Act and applicable US state securities laws.

The distribution of this presentation in jurisdictions outside Australia is restricted by law. Persons who come into possession of this presentation should observe any such restrictions. Any failure to comply with such restrictions may constitute a violation of law. Please refer to the International Offer Restrictions section of this presentation.

JORC Code

It is a requirement of the ASX Listing Rules that the reporting of ore reserves and mineral resources in Australia comply with the Joint Ore Reserves Committee's Australasian Code for Reporting of Mineral Resources and Ore Reserves ("JORC Code"). Investors outside Australia should note that while ore reserve and mineral resource estimates of the Company in this document comply with the JORC Code (such JORC Code-compliant ore reserves and mineral resources being "Ore Reserves" and "Mineral Resources" respectively), they may not comply with the relevant guidelines in other countries and, in particular, do not comply with (i) National Instrument 43-101 (Standards of Disclosure for Mineral Projects) of the Canadian Securities Administrators (the "Canadian NI 43-101 Standards"); or (ii) Item 1300 of Regulation S-K, which governs disclosures of mineral reserves in registration statements filed with the SEC. Information contained in this document describing mineral deposits may not be comparable to similar information made public by companies subject to the reporting and disclosure requirements of Canadian or US securities laws.

FY25 – a strong year of development and growth



First mine development

We received final regulatory permitting, funded and successfully developed Meeka's first gold mine, the Murchison Gold Project, on time and within 12 months.



First gold production

We poured first gold on 1 July 2025, only 9 months after processing plant construction started.



Expanded the team

We grew the team by 100+ employees in FY25 and **we have a highly skilled, capable and competent workforce** to administer, manage and operate our processing infrastructure, the multiple mines we operate and our accommodation village.



Owner-operator mining capability

We successfully established our owner-operator underground mining capability that is providing a cost advantage over contract mining. This capability will be expanded in 2026 with Meeka's second underground mine at Turnberry commencing in the June 2026 quarter.



Accelerated open pit production

We accelerated open pit mining with a third dig fleet mobilised in mid-2025. This brings forward high-grade ore, builds ore stockpiles, increases production flexibility and derisks a potential plant expansion (process plant expansion study underway now).



Strong safety performance

We continued to build on our strong health and safety culture with zero Lost Time Injuries (LTI), maintaining a Lost Time Injury Frequency Rate (LTIFR) of zero, well below the WA industry average of ~6.

Capital Structure



\$0.225

share price
(24 November 2025)

2,930m

shares

\$659m

market cap

13m

options

\$59m

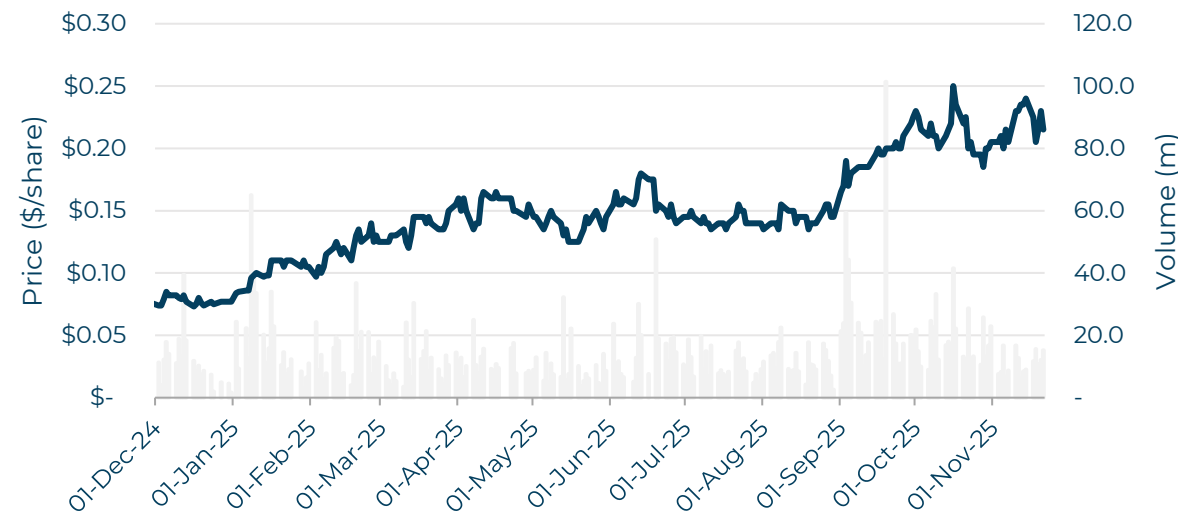
cash
(30 September 2025)

nil

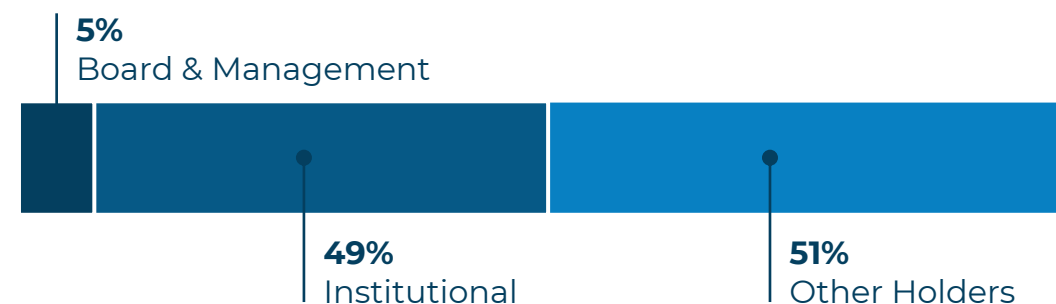
debt

\$600m

enterprise value



Ownership



Research Coverage



Leadership

Have done it before and are well aligned (have invested \$4m in the Company to date).

Board



Paul Chapman
Non-Executive Chairman

ACCOUNTANT

Chartered accountant with >30 years in the resources sector. Ex-WMC, founder of Silver Lake Resources (+250kozpa gold producer, +\$1B mc).



Tim Davidson
Managing Director

MINING ENGINEER

Previously mine manager for Silver Lake Resources. Ex-Newmont, BHP, WA and international experience.



Roger Steinepreis
Non-Executive Director

LAWYER

Founder and Chairman of national law firm Steinepreis Paganin. Previously Director of Apollo Consolidated (discovery of the 1Moz Rebecca deposit) and taken over by Ramelius Resources.



Paul Adams
Non-Executive Director

GEOLOGIST

Ex-Placer Dome and Dominion Mining then Head of Research at DJ Carmichael. Most recently Managing Director of Spectrum Metals (discovery of Penny West deposit) and taken over by Ramelius Resources.

Management



Chris Davidson - Chief Operating Officer

MINING ENGINEER

Mine manager for Silver Lake Resources responsible for developing their newest mine, Rothsay. Ex-Barrick, Gold Fields, Rio Tinto, WA and international experience.



Joe Belladonna - Chief Financial Officer & Company Secretary

ACCOUNTANT

Previously CFO and Company Secretary at Western Areas Ltd, CFO at St Barbara Mines Ltd, Sons of Gwalia Ltd. Seasoned mining finance executive with over two decades of experience.



Matthew O'Hara - General Manager Murchison

MINING ENGINEER

Developed the Penny Gold Mine for Ramelius Resources, ex-General Manager at Sunrise Dam for Anglo Gold Ashanti, Mount Monger for Silver Lake Resources and Operations Manager at St Ives for Gold Fields.



James Lawrence - Manager Geology

GEOLOGIST

Previously geology manager at Red 5, responsible for mine geology and production at the large King of the Hills mine. Extensive WA goldfields experience.



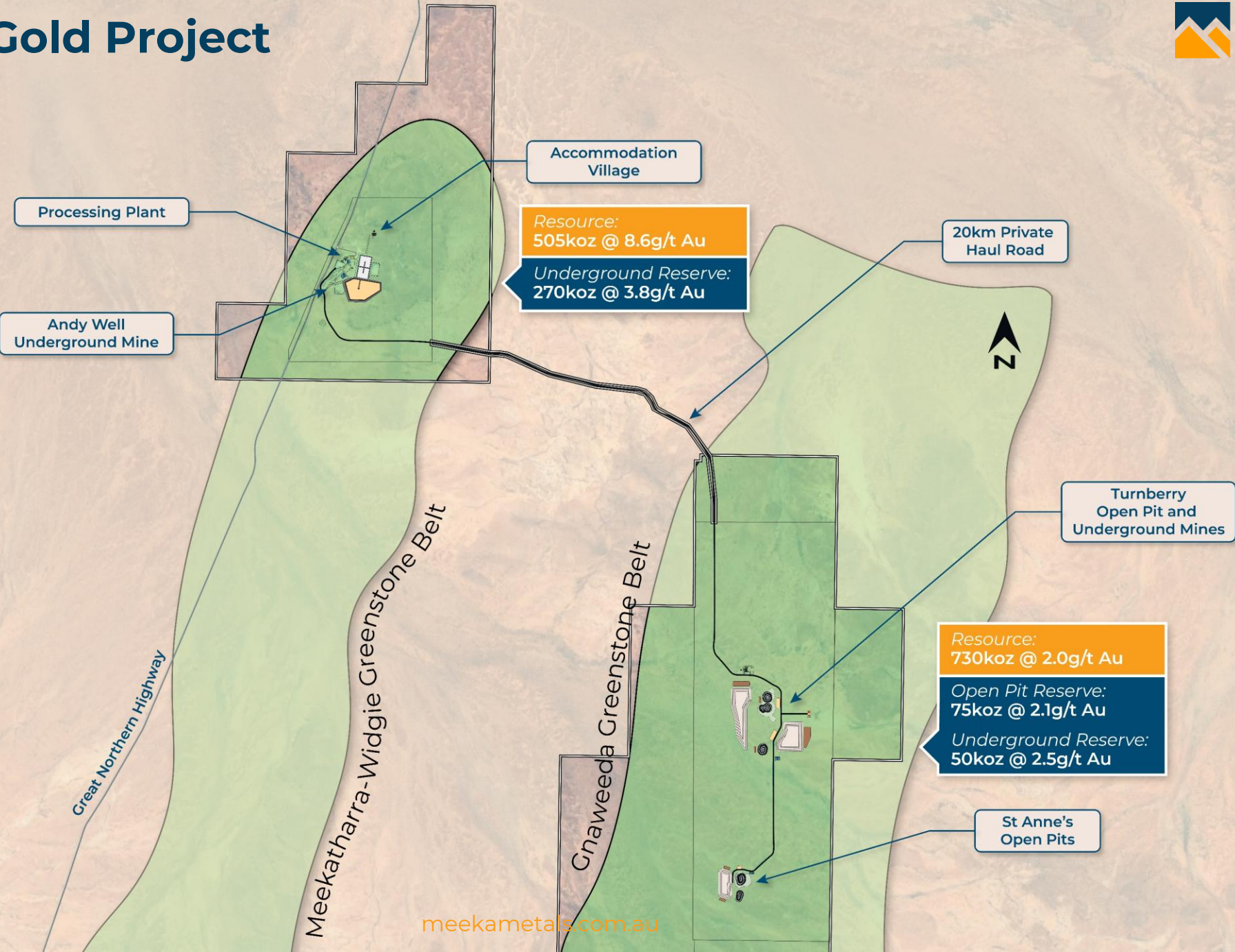
Alan Tandy - Manager Environment

ENVIRONMENTAL SCIENTIST

Previously Environmental Manager and led the permitting process for Bellevue Gold's high-grade Bellevue mine.

Murchison Gold Project

Site Layout.



Processing ramp-up on track, targeting ~600ktpa

- ✓ Ability to further expand processing capacity.
- ✓ Expansion study underway, targeted for Jun-26 quarter release.

Higher capacity
secondary crusher

New cyclone structure
and gravity gold circuit

2x new 600m³ CIL tanks

Larger 750kW ball mill

Upgraded gold room

Processing ramp-up in line with plan

✓ Production

Processed ore tonnes **14% above DFS ramp-up plan** in Sept-25 quarter.

✓ Unit Costs

Processing unit costs **19% below DFS estimate (\$43/t in Sept-25 quarter)**. Should trend lower as throughput continues to increase.

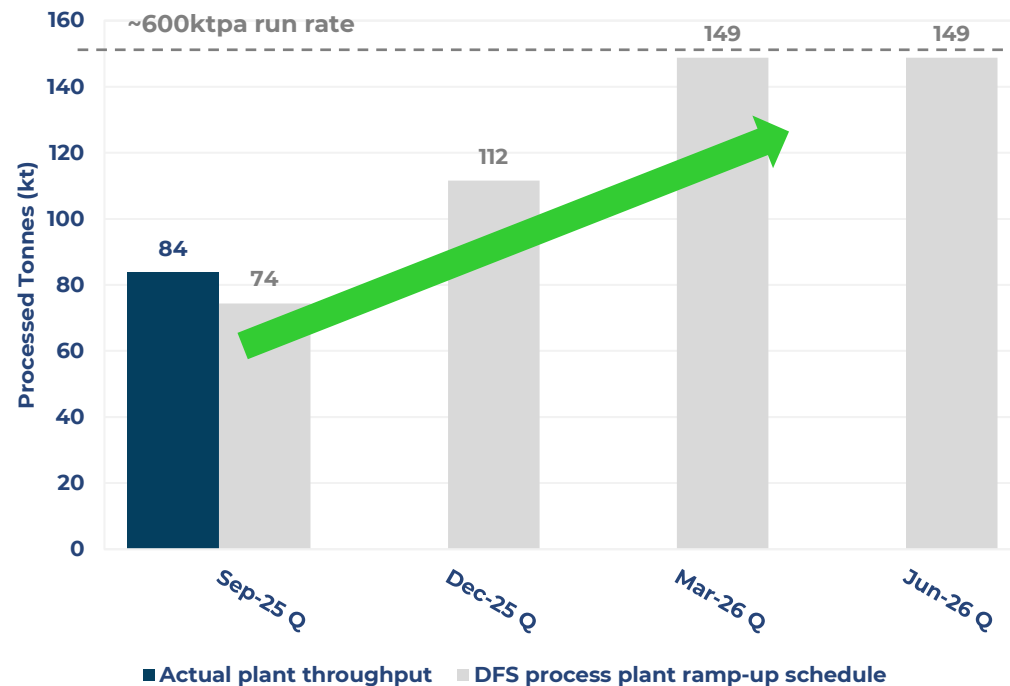
✓ Recovery

Recovery averaging 98% in Sept-25 quarter, in line with DFS estimate.

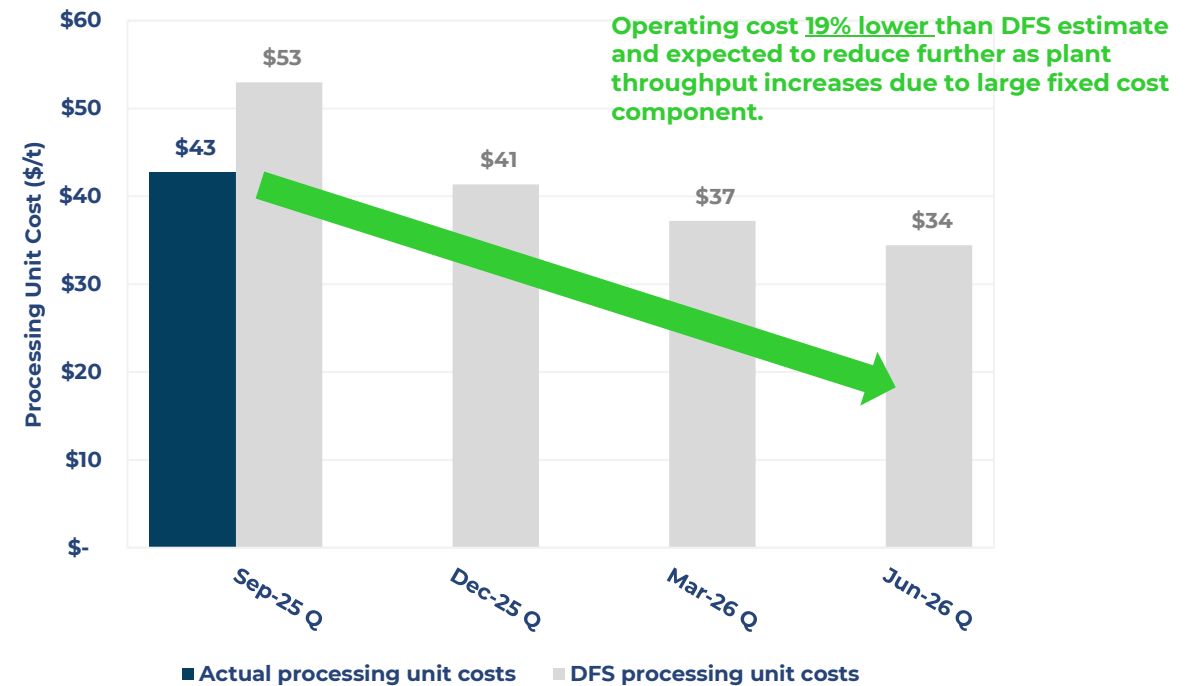
✓ Blend

Underground ore introduced into the blend in the Dec-25 quarter. **Plant performance and grade increasing** with this fresh ore in blend.

Processed ore tonnes (t)



Processing unit costs (\$/t)



Open pits accelerated and growing

Three pits now in production.

- ✓ **Third mining fleet mobilised** in July 2025 to accelerate open pit production.
- ✓ Fleet now operating at targeted production levels, ore stockpiles building.
- ✓ **Meeka's second underground mine at Turnberry commencing in the Jun-26 quarter** following Stage 1 central pit.

St Anne's South Open Pit
(mining in FY26)

St Anne's North Open Pit
(commenced mining Feb-25)

Turnberry South Open Pit
(commenced mining in Jun-25)

**Underground Access
Portal Locations**

Turnberry Central Open Pit
(commenced mining Apr-25)

Turnberry North Open Pit
(mining in FY26)



ASX:MEK

meekametals.com.au

Meeka
Metals

Open pit mining accelerated and performing well

✓ Production

3 open pits currently in production, 2 new pits starting in FY26.

✓ Unit Costs

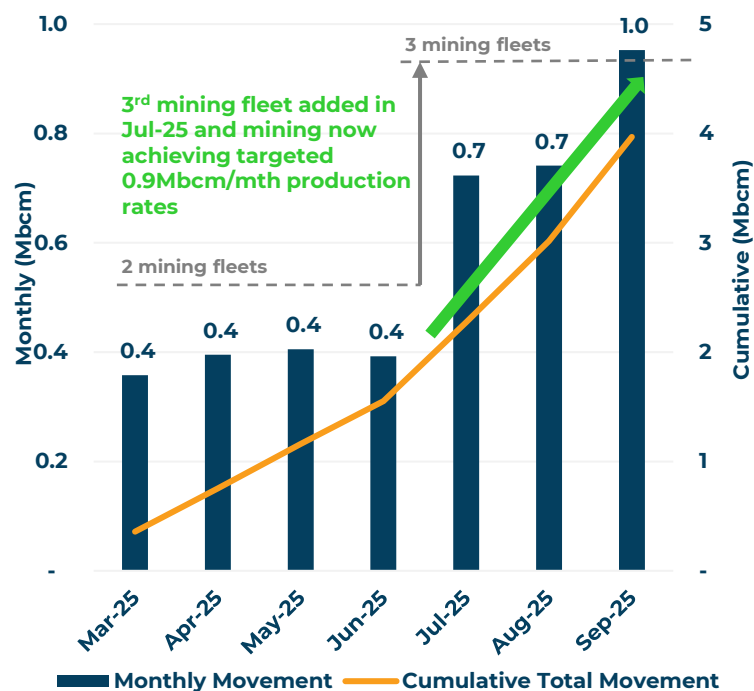
\$8.20/BCM all in open pit mining unit costs tracking in line with DFS estimate.

✓ Production flexibility

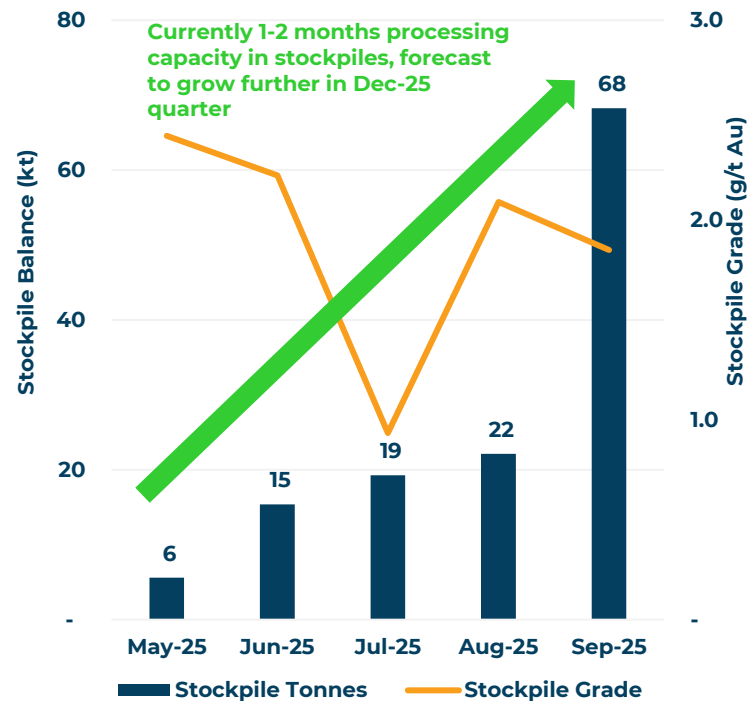
Third open pit mining fleet (200t digger + trucks) mobilised in July 2025 to accelerate production:

- ✓ **Brings forward high-grade ore**
- ✓ **Builds ore stockpile / increases production flexibility** (ore stockpile ~70kt @ 2g/t Au at end of Sept-25 quarter)
- ✓ **Stockpile build derisks potential plant expansion**

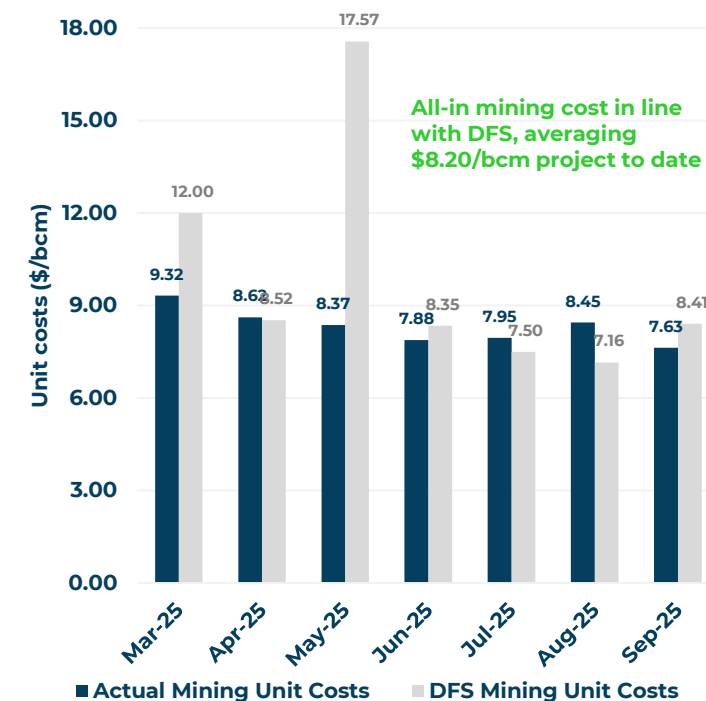
Open pit production (BCM)



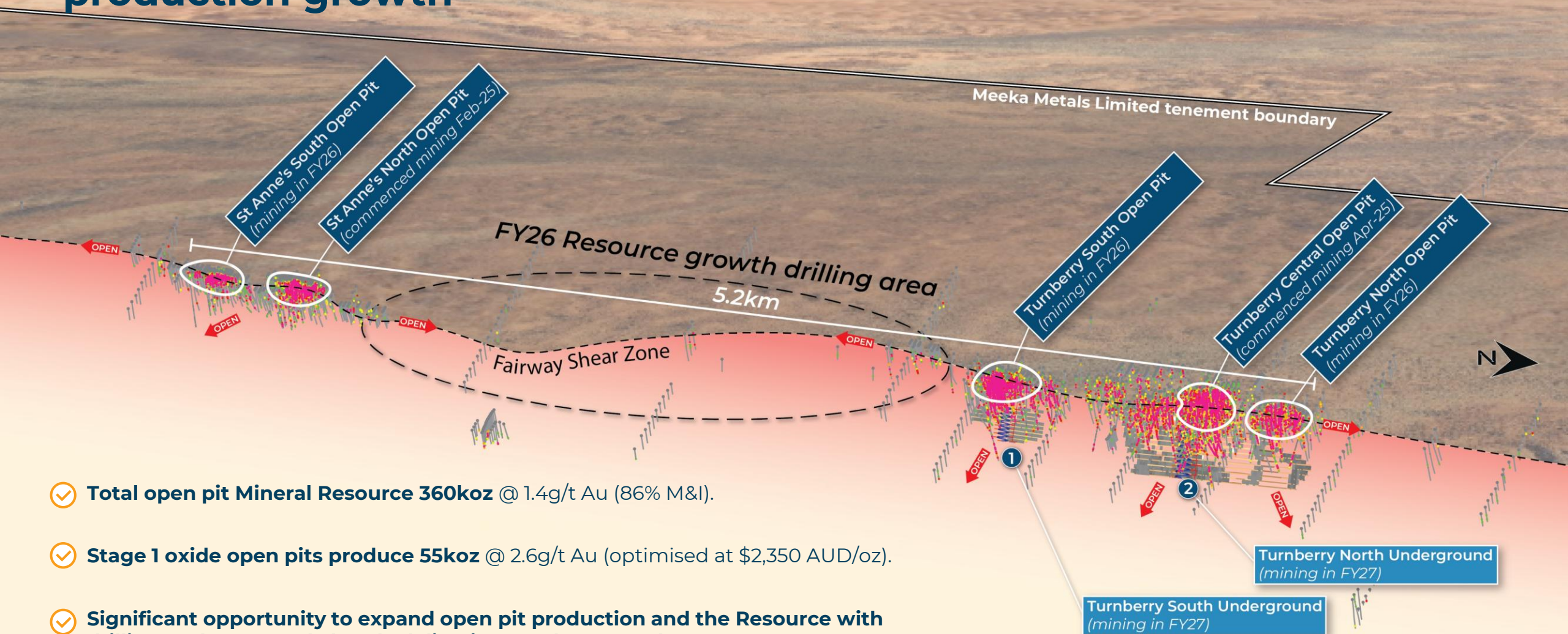
Ore stockpile (t)



Unit cost (\$/bcm)



Positive drilling results likely to deliver further open pit production growth

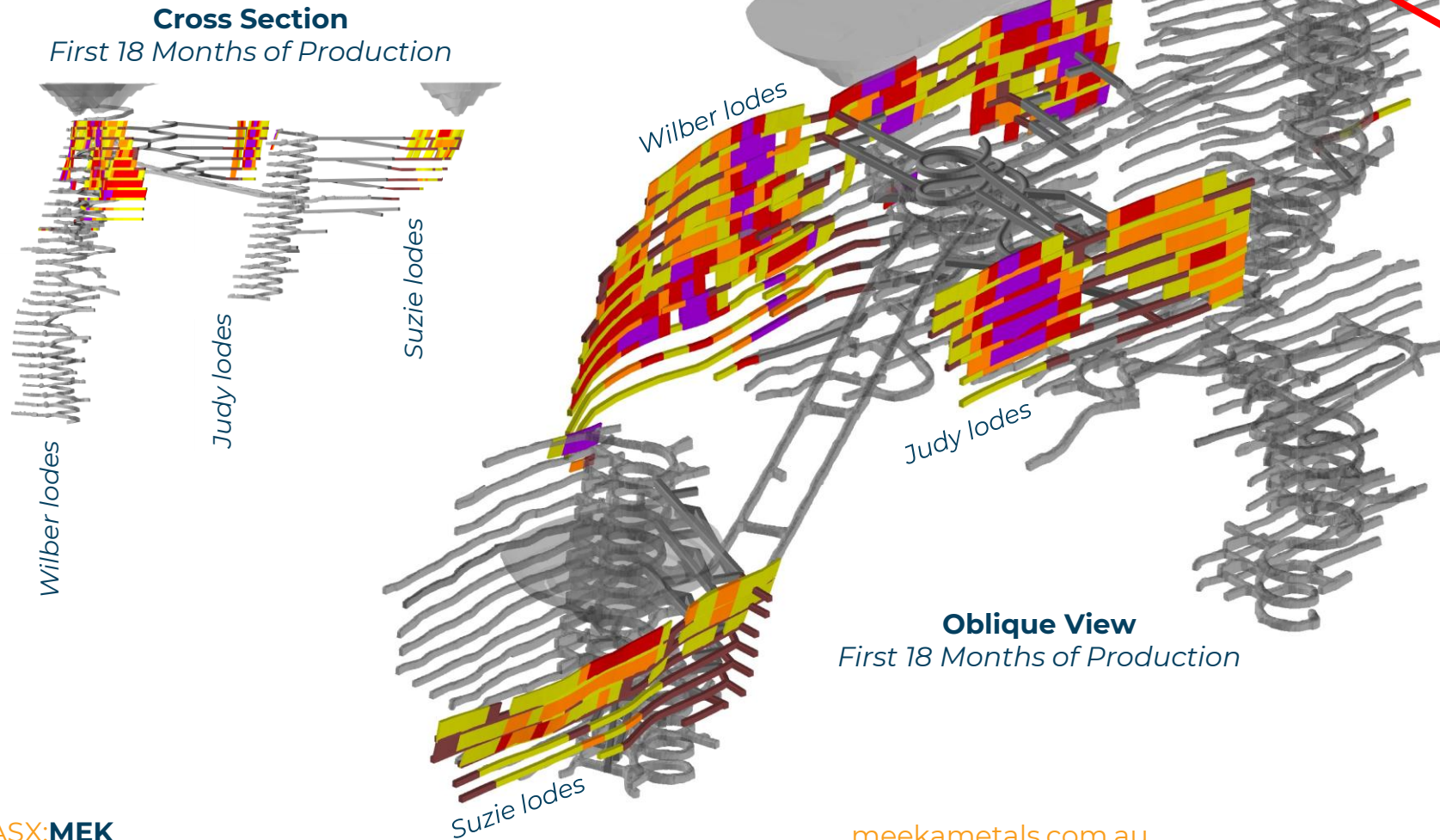


- ✓ **Total open pit Mineral Resource 360koz @ 1.4g/t Au (86% M&I).**
- ✓ **Stage 1 oxide open pits produce 55koz @ 2.6g/t Au (optimised at \$2,350 AUD/oz).**
- ✓ **Significant opportunity to expand open pit production and the Resource with drilling underway and already delivering results at Turnberry.**

- ✓ **Bulk underground mining (126koz @ 2.5g/t Au) commencing in June 2026 quarter following Stage 1 open pits.**

Development commenced in July 2025 12 months ahead of plan

- ✓ **Mining schedule brought forward** to de-risk FY26 and FY27 production plan.



- ✓ **Low capital re-start** with existing decline to ~500m below surface.
- ✓ First ~12-18 months of production from new, shallow mining areas within ~200m of surface.
- ✓ **Growth drilling commenced in the Sept-25 quarter** from underground in parallel with mining.

Underground mining ramping up successfully

✓ Production

Owner-operator mining by Meeka is working well and ramping up, 3rd development jumbo commencing in Dec-25 quarter.

✓ Unit Costs

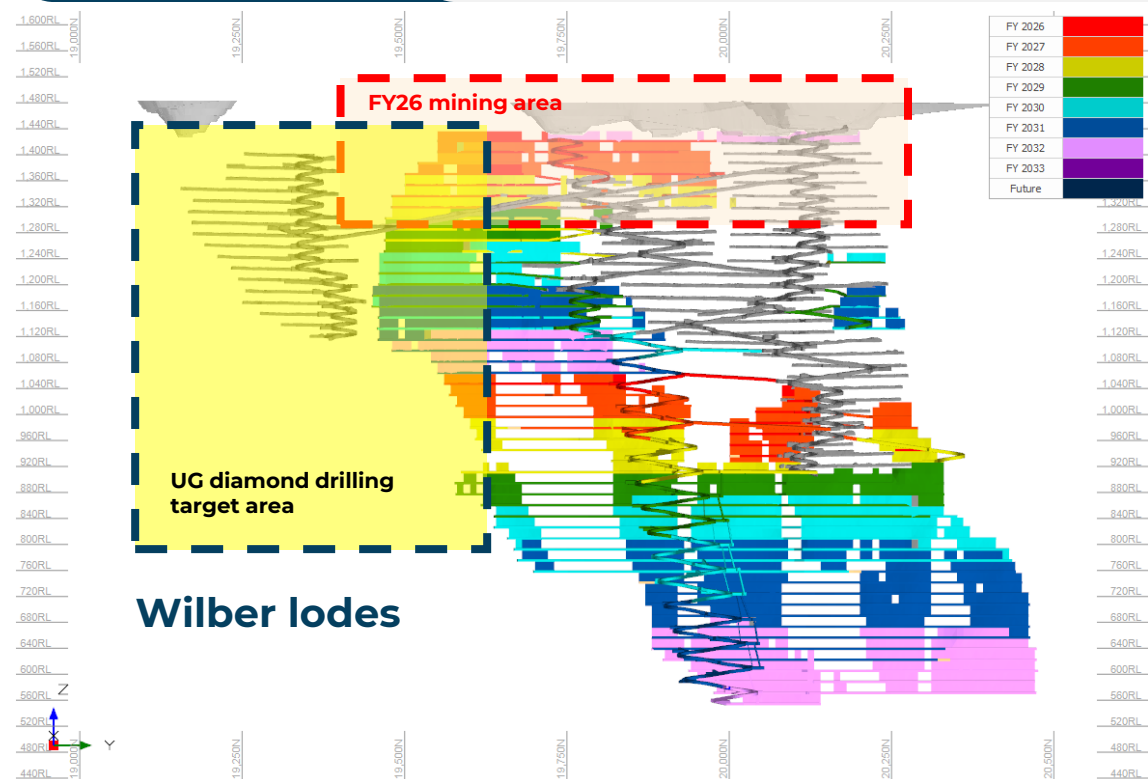
Owner-operator underground mining is providing greater operating flexibility and a cost advantage over contract mining.

✓ Tactical Focus

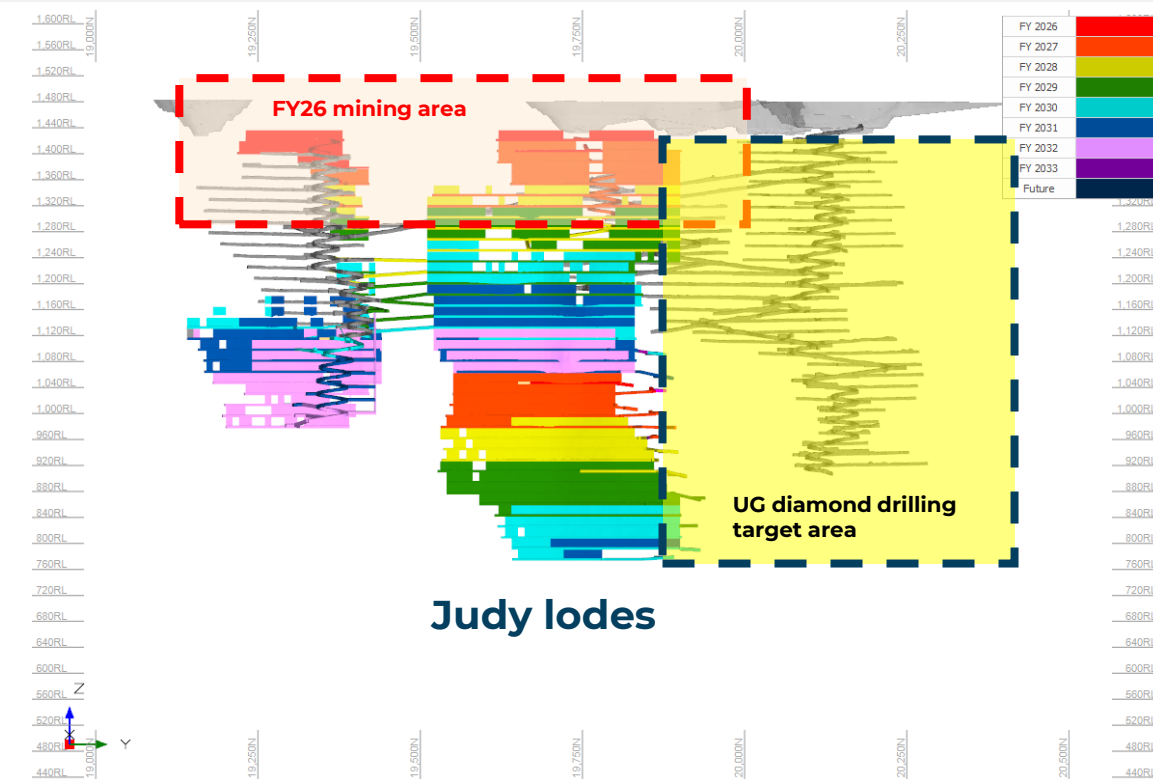
Focus for FY26 is to complete ore development and establish infrastructure well in advance of planned FY27 stoping (de-risks FY27 production).

✓ Growth

Underground drill platforms established to target Resource growth. Drilling commenced in the Sept-25 quarter



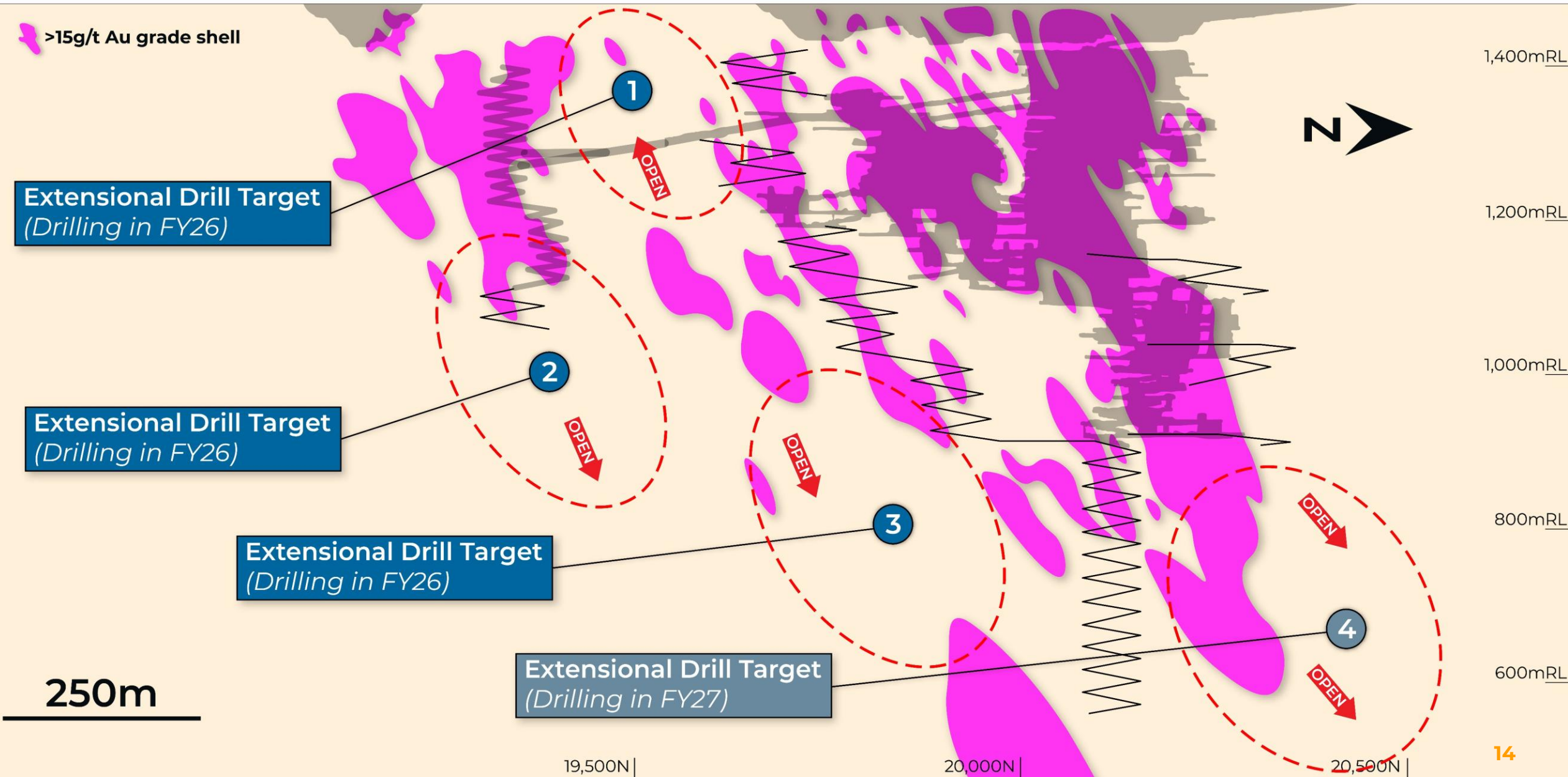
Wilber lodes



Judy lodes

Andy Well Growth

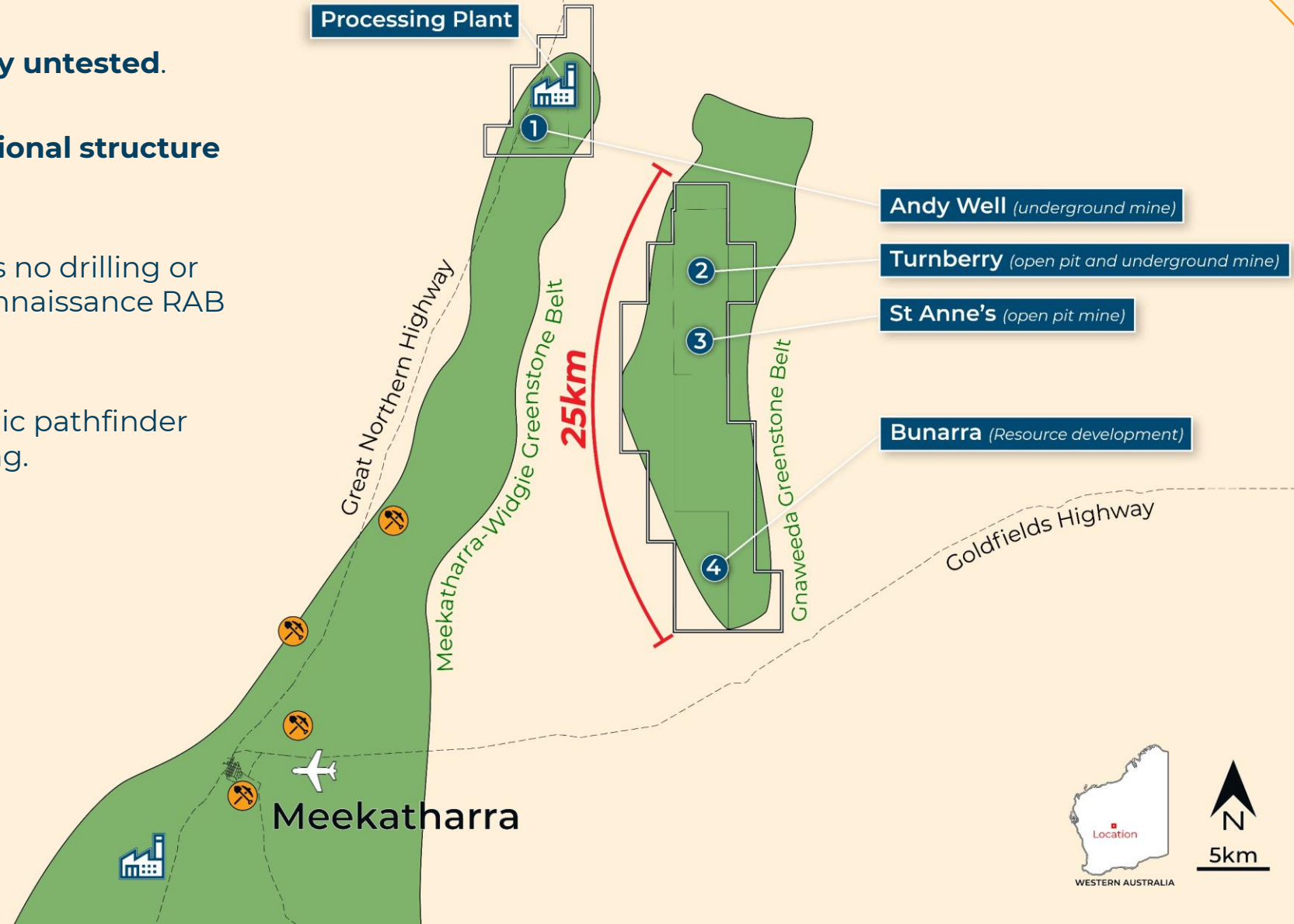
Open down plunge, drilling from underground platforms starting in 2025.



25km Long Archean Greenstone Belt

Significant organic growth opportunity at Gnaweeda.

- ✓ Gnaweeda belt remains **largely untested**.
- ✓ **25km contact with major regional structure** (Boundary Shear Zone).
- ✓ 90% of the greenstone belt has no drilling or ineffective, broad spaced reconnaissance RAB drilling from 1990's and 2000's.
- ✓ Multiple coincident gold-arsenic pathfinder targets require follow up drilling.



Contact

Tim Davidson | Managing Director

+61 8 6388 2700

info@meekametals.com.au



ASX:MEK

meekametals.com.au

