

13 November 2025

## DRILLING UNDERWAY AT MURCHISON SOUTH GOLD PROJECT

### HIGHLIGHTS

- 5,000m RC drill program underway at the 100%-owned Murchison South Gold Project, near Payne's Find, WA.
- Infill drilling ~2400m to increase resource areas from inferred to indicated classification.
- Extensional drilling ~2600m targeting high priority quartz veins and historic gold workings adjacent to conceptual pit designs.
- 500+ rock chip samples to test targets identified from mapping and geophysical imaging across Murchison South.
- New discovery potential in untested zones beneath mapped quartz veins and old workings at Blue Heaven, Pansy and Shamrock pits.



Figure 1: RC drill rig on site at Blue Heaven deposit (North pit) Murchison South Gold project

**Reach Resources Limited** (ASX: RR1 & RR1OA) (“**Reach**” or “the **Company**”) is pleased to advise that drilling commenced on Wednesday 12 November at the Company’s 100% owned Murchison South Gold Project, near the historic gold town of Payne’s Find in the Murchison region of Western Australia.

As announced on the 28 October 2025 “RR1: ASX Infill & Extensional Drill Program – Murchison South” a targeted ~5000m infill and extensional drill program and exploratory rock chip sampling program would be undertaken at our Murchison South Gold Project.

### **Infill and Extensional Drill Programs**

RC drilling of approximately 42 holes for ~5000 metres is planned across the Blue Heaven deposit within and proximal to current conceptual pit designs.

Approximately half of the drilling is focused on increasing resource confidence of inferred material within current pit designs to the indicated classification by reducing spacing to a 20m x 20m pattern. Those holes are noted in Figure 1 within the North, Central, South East and South pits.

The remaining drilling is targeting areas identified during the Company’s ongoing scoping Study that are immediately adjacent or proximal to the conceptual pit designs which have no previous drilling, however, significantly have either been subject to historic gold mining and/or have mapped surface quartz veins presenting high- confidence targets for further mineralisation.

#### **North Pit**

There is sufficient drill hole coverage across the majority of this current conceptual pit with only the northern portion containing inferred material and hence infill drilling consists of six holes within this area to convert resources to an indicated classification.

Additionally, two holes have been planned to the west of the conceptual pit targeting material at depth below the current pit floor and also a further five holes targeting a gap in drilling immediately to the north east of the pit limits under mapped quartz veins.

#### **Central/South East Pits**

The main focus of this drilling is the zone to the east of the conceptual Central pit and north of the conceptual South East pit where there is a high concentration of mapped quartz veins and old gold workings but no previous drilling. A total of eleven holes are planned in this area beneath the workings to test for further mineralisation to potentially add to the current resource inventory.

In addition, there are a number of infill holes that aim to convert inferred resources to indicated classification.

#### **South Pit**

The main focus within this conceptual pit design is deeper drilling, as a section of this pit design is undercover from historical ramps and old process infrastructure from previous gold production from ore produced in this field. Quartz veins from been mapped to the south and north of this design and therefore there is potential for infill drilling to discover further mineralisation at depth.

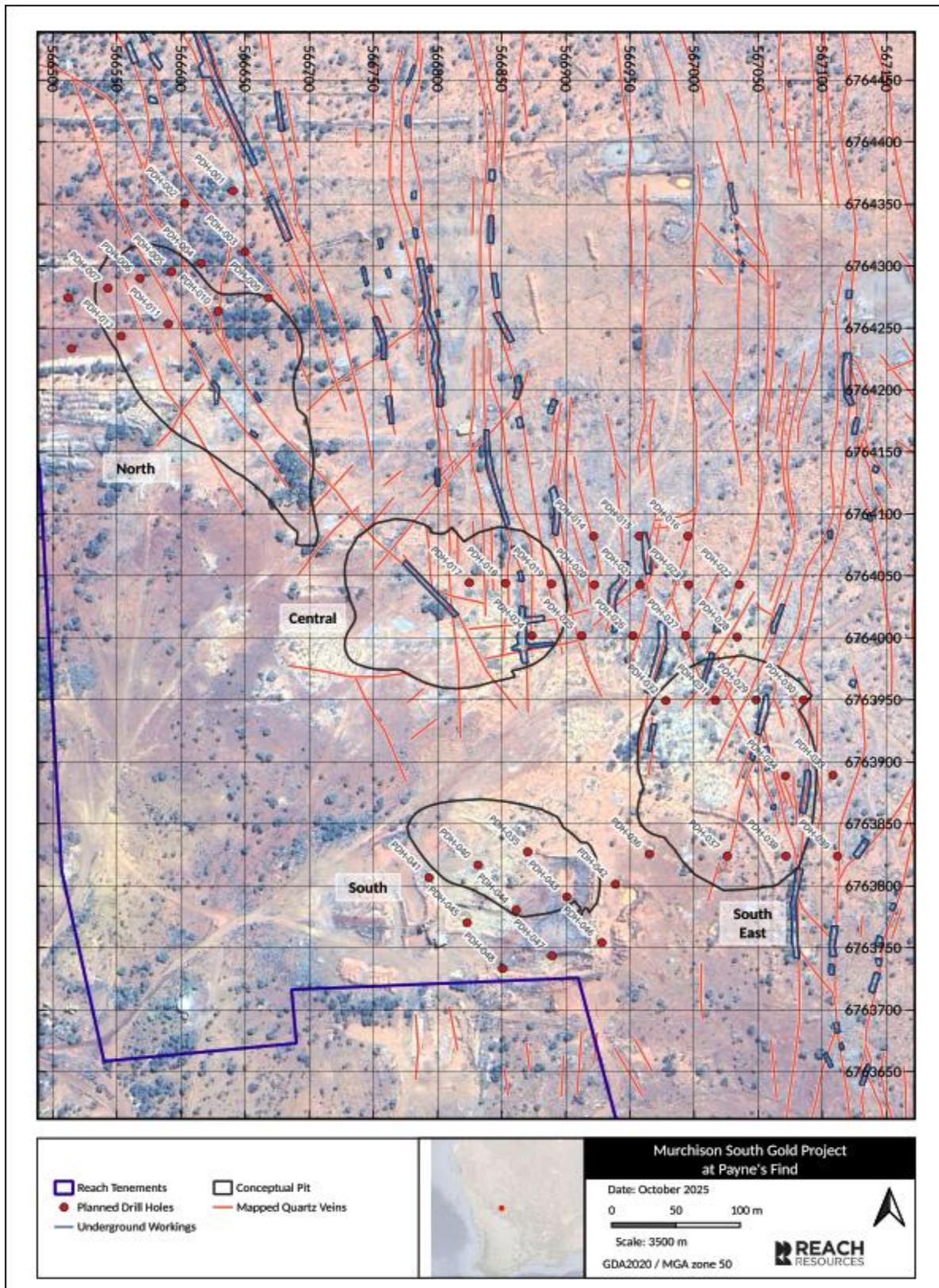


Figure 2: Planned drilling vs mapped quartz and historic gold workings

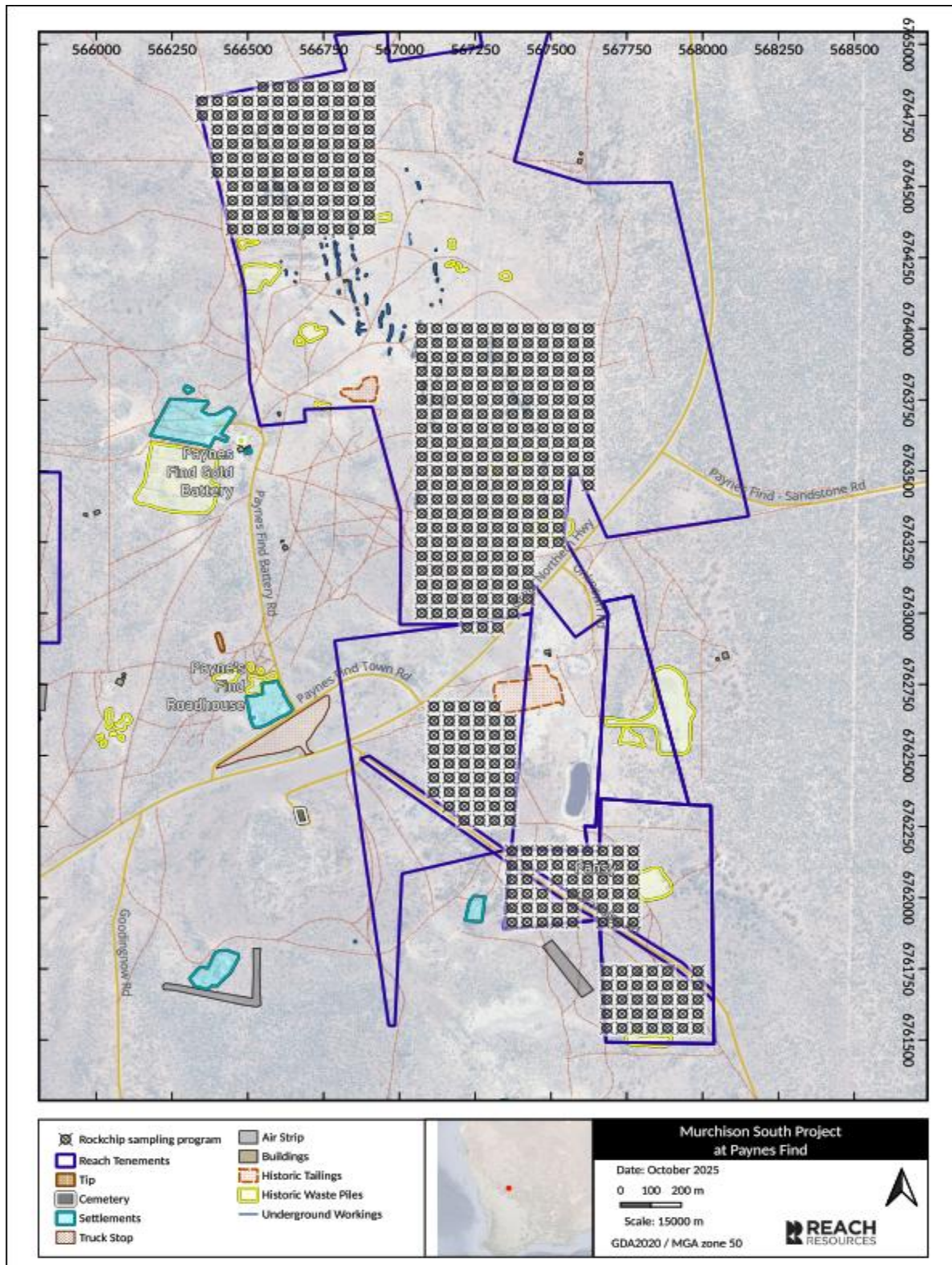
**Surface sampling program**

An extensive rock chip sampling program has been planned on a 50m x 50m grid pattern to collect up to 500 samples at Murchison South.

Targets within the Blue heaven deposit area on M59/769 have been selected based on faults and structural features identified from detailed geophysical imagery and coincident mapped surface quartz veining.

Targets on the south side of the Great Northern Highway are planned based on limited drilling, such as at the Pansy Pit, and historical gold workings including costeans and the old Shamrock pit.

This program will provide the Company with further understanding of the potential for any increase in mineralisation at our Murchison South Gold project.



**Figure 3: Planned rock chip sampling program**

*This announcement has been authorised by the Board of Reach Resources Limited*

For further information please contact:

**Jeremy Bower**

Chief Executive Officer

Level 4, 216 St Georges Terrace

Perth, 6000 W.A

*jeremy@reachresources.com.au*

-ENDS-

**About Reach Resources Limited**

Reach Resources has a diversified portfolio of projects lead by the Murchison South Gold project near Payne's Find, Western Australia.

The Company has also advanced lithium, manganese and REE exploration assets in the resource rich Gascoyne Mineral Field.

In addition, the Company holds an investment in a downstream patented technology that recycles the rare earth elements from the permanent magnets required in electric vehicles, wind turbines, hard disk drives and MRI machines (RECycle Inc.).

**Competent Person's Statement**

Information in this announcement that relates to exploration results is based on and fairly represents information and supporting documentation prepared and compiled by Mr David Tsiokos, who is a Member of the Australian Institute of Mining, Metallurgy and Petroleum. Mr Tsiokos is the Principal Geologist for Reach Resources Limited employed on a full-time basis and holds options in the company. Mr Tsiokos has sufficient experience, which is relevant to the style of mineralisation and type of deposit under consideration and to the activity which he is undertaking to qualify as a Competent Person, as defined in the 2012 Edition of the Australasian Code for Reporting Exploration Results, Mineral Resources and Ore Reserves. Mr Tsiokos consents to the inclusion in the announcement of the matters based on this information in the form and context in which it appears.

**No New Information**

Except where explicitly stated, this announcement contains references to prior exploration results, all of which have been cross-referenced to previous market announcements made by the Company. The Company confirms that it is not aware of any new information or data that materially affects the information included in the relevant market announcements.

**Forward Looking Statement**

This report contains forward looking statements concerning the projects owned by Reach Resources Limited. If applicable, statements concerning mining reserves and resources may also be deemed to be forward looking statements in that they involve estimates based on specific assumptions. Forward-looking statements are not statements of historical fact and actual events and results may differ materially from those described in the forward looking statements as a result of a variety of risks, uncertainties and other factors. Forward looking statements are based on management's beliefs, opinions and estimates as of the dates the forward looking statements are made and no obligation is assumed to update forward looking statements if these beliefs, opinions and estimates should change or to reflect other future developments.