

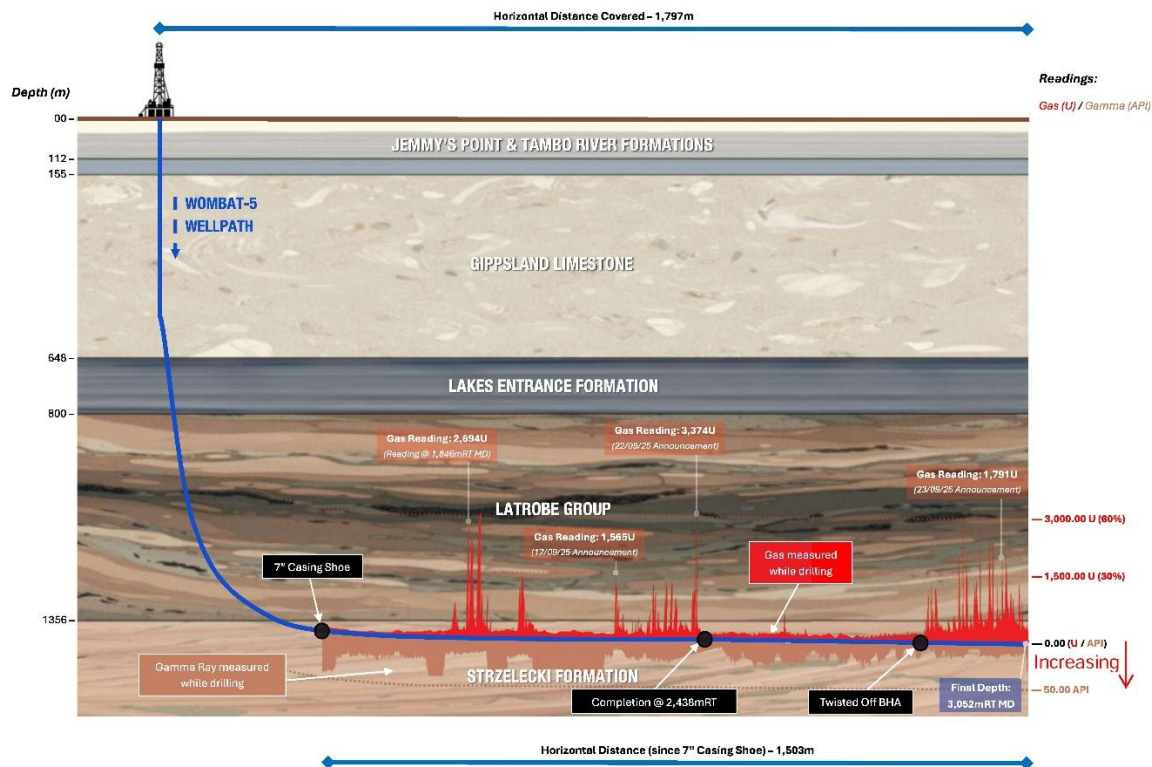
## **Wombat-5 Well, Gippsland Basin, Victoria Production Testing Timing Update**

The Board of Lakes Blue Energy NL (ASX:LKO) (**Lakes** or the **Company**) provides the following update regarding the planned production testing operations at Wombat-5.

Since the last announcement regarding the completion of the well and demobilisation of all drilling equipment, the well site has been re-graded in preparation for mobilisation to site of the workover rig and well test equipment. All equipment and services have been contracted, and approvals are in place for the production testing to commence.

Owing to delays in some equipment and staff being released from third party operations, it is now expected that the first loads of equipment will be mobilised on 19 November. All equipment is expected to be onsite by Sunday, 23 November with production testing operations to commence as soon as the equipment has been rigged up.

The three major gas sand packages encountered in the well (see schematic below) have potential to contribute to gas flow from the Wombat-5 well. The first two sand packages are secured behind the 4-1/2" casing and will be accessed via sliding sleeves run in the casing between swellable packers. The third gas sand package may contribute flow through the bottom sliding sleeve located below the bottom swellable packer. Lakes is confident that there will be contribution from the third sand package despite the stuck bottomhole assembly preventing the casing being run to total depth at 3,052 mRT MD <sup>1,2</sup>.



*Schematic cross-section showing the Wombat-5 well path and significant gas shows to be tested during the production testing operations.*

It is intended that the results of production testing at Wombat 5 will allow confirmation of the recoverable gas resource at Wombat, and provide valuable gas deliverability and gas compositional information to enable a bankable feasibility study to be conducted.

The Company's Chairman, Roland Sleeman, noted:

*"Despite the delay in the arrival of the testing equipment and staff, due to the delayed release of the equipment from third party operations, Lakes remains confident the testing operation will prove the commerciality of the Wombat Field."*

**This announcement was authorised by the Board of Lakes Blue Energy.**

*For enquiries regarding this release please contact:*

**Roland Sleeman**

**Chairperson**

**Tel: +61 3 9629 1566**

1. mRT means metres below the rotary table, effectively metres below the drilling rig floor.
2. MD means measured depth